



hp

**how to manage
your HP-UX
software updates**

june 2004

**HP-UX 11i v1/11i v2
for hp9000**

workstations and servers





Dear Customer,

We are pleased to present to you our HP-UX software updates brochure of June 2004.

This brochure contains all the information you need about HP-UX products - applications, patches, technical support availability dates and more.

This invaluable tool provides assistance and advice to help you manage your application and operating system updates effectively.

We aim to tailor our service to your requirements, so don't hesitate to share your comments, remarks and suggestions with us.

- by mail:
es3.communication@hp.com
- at the following address:
HP Centre de compétences France
Emea Software Supply Solutions
Customer Relationship Services - Mailstop 65
38049 Grenoble CEDEX 9

We thank you for your confidence in us and hope you enjoy reading our brochure.

Yours Faithfully,

HP Company

TABLE OF CONTENTS

HP-UX 11i v1 / 11i v2 Application Release	7
Products summary for June 2004	8
Licensing information for June 2004	10
New and updated products for June 2004	11
HP-UX 11i v1 Operating Environment	15
What's new in the HP-UX 11i v1 June 2004 release?	16
What's updated in the HP-UX 11i v1 June 2004 release?	17
HP-UX Hardware Enablement (HWEnable11i)	22
HP-UX 11.i v1 Support Plus	25
HP-UX Support Plus June 2004 release	26
HP-UX 11.i v1Support Plus CD-Rom content	29
Requesting HP-UX Support Plus	30



**HP-UX 11i v1/11i v2
Application Release**

HP-UX 11i v1/11i v2

Application Release

Products summary for June 2004

These releases provide you with the latest versions of applications for the HP-UX 11i v1 / 11i v2 Operating Environment.

You are entitled to receive one of these releases if one or more of your products under support contract has been updated.

If you wish more information about software updates or support matrices for HP-UX application releases, please access the following url:

<http://www.software.hp.com/RELEASES-MEDIA/>

New product means the product is new with this consolidated release.

Updated product means the product previously existed and is being updated with this consolidated release.

IPFilter/OpenSSL

For the 11.11 branch of the Application Release of June 04, HP is including IPFilter version A.03.05.09. The primary new things in this release are:

1. Various enhancements to the "dynamic connection allocation (DCA)" feature.
2. Defect repairs

For the 11.23 branch of Application Release of June 2004, HP is including IPFilter version A.03.05.06.v2. This version is the same as A.03.05.06 with the following addition: Support for Infiniband link type.

This update primarily applies to "System Admin managing UNIX patch updates". If the customer is adding an Infiniband link to their system, then this release of IPFilter is essential for them.

Product	Description	Platform	Version
B9901AA	HP-UX IPFilter	700	11.11
B9901AA	HP-UX IPFilter	700,800	1.23
B9901AA	HP-UX IPFilter	800	11.11

Product	Description	Platform	Version
HPUXOpe	HPUXOpenSSL	700,800	11.11
HPUXOpe	HPUXOpenSSL	700,800	11.23



Ignite-UX

The Ignite-UX product is an HP-UX administration toolset that helps you do the following:

- install HP-UX 11.0 and 11i v1 (B.11.11), v1.6 (B.11.22), v2 (B.11.23) on multiple PA-RISC and/or Intel(r) Itanium(r)-based clients on your network;
- create customized install configurations, or golden images, for use in multiple installations on clients;
- recover HP-UX clients remotely;
- create customized recovery media on tape and network drives;
- manage and monitor multiple client installation sessions.

Why should I request the Ignite-UX product update?

This product provides me with:

- Latest defect fixes (no patches are provided for this product)
- Hardware enablement
- Last opportunity to get 10.20 client support

Whom does the update apply to?

This Ignite-UX update applies to System Administrators who:

- manage UNIX patch updates
- plan UNIX hardware updates
- upgrade to new OS
- create system recovery images
- maintain many similarly configured systems

Product	Description	Platform	Version
B5725AA	Ignite-UX	700,800	11.11
B5725AA	Ignite-UX	700,800	11.23

TRU64 UNIX Migration Environment

The Tru64 UNIX Migration Environment for HP-UX is a compatibility layer running on HP-UX 11i v2 that contains Tru64 UNIX Application Programming Interfaces (APIs), development tools, commands and utilities to assist customers in transitioning their customized applications from Tru64 UNIX to HP-UX on Itanium®-based systems.

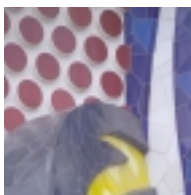
Why should I request Tru64 UNIX product update?

- I am interested in transitioning to HP-UX 11i v2
- I have Tru64 UNIX customized code to be transitioned to HP-UX
- Tru64 UNIX Migration Environment is a new product on the Application media

Whom does the update apply to?

This product applies to developers.

Product	Description	Platform	Version
T2359AT	T64 Migr. Envir.	700,800	11.23



Licensing information for June 2004

Some applications require codeword certificate to unlock the software. The password is supplied with your software shipment or for some products you will receive a "password request form" enclosed with your shipment asking you to:

1. Generate it on line on Software License Manager
2. Generate it on line on Web ware
3. View it on line thru Software Update Manager
4. Contact HP Licensing Services
5. Contact Password Center

Your HP US licensing contact:

Hewlett-Packard Company
HP Licensing Services North America
Phone: +1(650) 960-5111
or (800) 538-1733
Fax: +1(650) 960-5670
or (800) 541-2633
E-mail: hplicense.na@hp.com
Business hours: Monday to Friday
6:00am - 4:30pm PST

Your HP European licensing contact:

Hewlett-Packard Ireland
HP Licensing Services Ireland
Phone: +353 (0)91 75 40 06
Fax: +353 (0)91 70 1002
E-mail: codeword_europe@hp.com
Business hours: Monday to Friday
8:30am - 5:30pm GMT

Your HP Asia Pacific contact:

Hewlett-Packard Japan
HP Licensing Services Japan
Phone: 0120.42.1231 (Inside Japan)
or 0426.48.9310 (Inside Japan)
or +81.426.48.9312 (Outside Japan)
Fax: 0 120.52.1231 (Inside Japan)
or +81 426.39.4983 (Outside Japan)
E-mail: sw_codeword@hp.com
Business hours: Monday to Friday
9:00am - 5:30pm GMT+9

For some other products it is recommended to:

1. Generate the password on line thru Web Ware web site at the url: www.webware.hp.com, or
2. For additional password assistance you may contact one of the following license centers

Hewlett-Packard Password Center for U.S.A:

Phone: (801) 431-1597 or (800) 326-0411
Fax: (801) 431-3654
Hours of operation: 6:00 am to 6:00 pm MST
Americas_password@cnd.hp.com

Hewlett-Packard Password Center for Europe/Africa:

Phone: (+31-55-543-4642)
Fax: (+31-55-543-4645)
Hours of operation: 9:00 to 18:00 CET
Europe_password@cnd.hp.com

Hewlett-Packard Password Center for Asia Pacific:

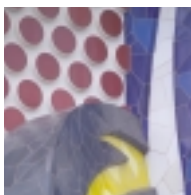
Phone: (outside Japan) +81-3-3227-5672
Phone: (within Japan) 03-3227-5264
Fax: (+81-3-3227-5238)
Hours of operation: 9:00 am to 5:00 pm JST
Asia_password@cnd.hp.com



New and updated products for June 2004

Workstation platform

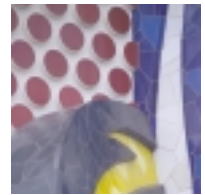
Base	Category	Description	Product Number	Version	Update/New
11.11	OTHER	EMS Framework	B7609BA	A.04.00.02	Update
11.11	OTHER	GTK + Libraries	B6848BA	1.4.gm.46.7	Update
11.11	NETWORKING	GbE PCI 1000B-T	GigEther-01	B.11.11.15	Update
11.11	OTHER	GraphicsTechCom	B6268AA	B.11.11.20.	Update
11.11	LANGUAGE	HP-UX Apache	hpuxwsApache	A.2.0.49.00	Update
11.11	NETWORKING	HP-UX IPFilter	B9901AA	A.03.05.09	Update
11.11	LANGUAGE	HP-UX Tomcat	hpuxwsTomcat	A.4.1.29.02	Update
11.11	LANGUAGE	HP-UX Tools	hpuxwsXml	A.2.00	Update
11.1	LANGUAGE	HP-UX Webmin	hpuxwsWebmin	A.1.070.00	Update
11.11	OTHER	HPUXOpenSSL	OpenSSL	A.00.09.07	New
11.11	OTHER	Ignite-UX	B5725AA	B.5.4.50	Update
11.11	LANGUAGE	JPI 1.3	T1455AA	1.3.1.13.01	Update
11.11	OTHER	Java Out-of-Box	JAVAOOB	2.03.00	Update
11.11	LANGUAGE	Java2 JDK 1.4	T1456AA	1.4.2.02.01	Update
11.11	LANGUAGE	Java2 JPI 1.4	T1458AA	1.4.2.02.01	Update
11.11	LANGUAGE	Java2 JRE 1.3	B9789AA	1.3.1.13.01	Update
11.11	LANGUAGE	Java2 JRE 1.4	T1457AA	1.4.2.02.01	Update
11.11	LANGUAGE	Java2 RTE Addon	T1457AAaddon	1.4.2.02.01	New
11.11	LANGUAGE	Java2 SDK 1.3	B9788AA	1.3.1.13.01	Update
11.11	LANGUAGE	Java2 SDK Addon	T1456AAaddon	1.4.2.02.01	New
11.11	LANGUAGE	Java3D 1.3	T1868AA	1.3.0.01.08	Update
11.11	LANGUAGE	Java3D for 1.4	T1869AA	1.3.0.01.08	Update
11.11	OTHER	Mozilla	MOZILLA	1.4.0.01.04	Update
11.11	OTHER	Mozilla Source	MOZILLAsrc	1.4.0.01.04	Update
11.11	OTHER	PPU	T2351AA	B.07.00	Update
11.11	NETWORKING	SCSI U320	scsiU320-00	B.11.11.01	Update
11.11	OTHER	SwPkgBuilder	SwPkgBuilder	A.02.00.00.	Update
11.11	OTHER	SysMgmtAgent	B8339BA	B.03.00.07	Update
11.11	OTHER	iCOD SW	B9073BA	B.06.02	Update
11.11	LANGUAGE	perl-non CPL	perl	D.5.8.0.B	Update



Workstation platform

Base	Category	Description	Product Number	Version	Update/New
11.23	NETWORKING	Auto Port Aggreg	J4240AA	B.11.23.00	New
11.23	OTHER	GTK + Libraries	B6848BA	1.4.gm.46.7	Update
11.23	OTHER	HP MPI	B6060BA	B.11.23.05	Update
11.23	NETWORKING	HP-UX IPFilter	B9901AA	A.03.05.06.	Update
11.23	OTHER	HPUXOpenSSL	OpenSSL	A.00.09.07	New
11.23	NETWORKING	InfiniBand-Core	IB4X-00	B.11.23.01	New
11.23	LANGUAGE	JPI 1.3	T1455AA	1.3.1.13.01	Update
11.23	OTHER	Java Out-of-Box	JAVAOOB	2.03.00	Update
11.23	LANGUAGE	Java2 JDK 1.4	T1456AA	1.4.2.02.01	Update
11.23	LANGUAGE	Java2 JPI 1.4	T1458AA	1.4.2.02.01	Update
11.23	LANGUAGE	Java2 JRE 1.3	B9789AA	1.3.1.13.01	Update
11.23	LANGUAGE	Java2 JRE 1.4	T1457AA	1.4.2.02.01	Update
11.23	LANGUAGE	Java2 SDK 1.3	B9788AA	1.3.1.13.01	Update
11.23	OTHER	Mozilla	MOZILLA	1.4.0.01.04	Update
11.23	OTHER	Mozilla Source	MOZILLAsrc	1.4.0.01.04	Update
11.23	OTHER	SysMgmtAgent	B8339BA	B.03.00.07	Update
11.23	OTHER	T64 Migr. Envir.	T2359AT	B.11.65	New





Server Platform

Base	Category	Description	Product Number	Version	Update/New
11.11	OTHER	Cluster Obj Mgr	B8324BA	B.03.00.00	Update
11.11	OTHER	ContCluster	T2346BA	A.04.02	Update
11.11	OTHER	ECM Toolkit	B5139EA	B.02.10	Update
11.11	OTHER	ECM Toolkit	B5139DA		Update
11.11	OTHER	EMS Framework	B7609BA	A.04.00.02	Update
11.11	NETWORKING	FCD PCI-X Adaptr	FibrChanI-01	B.11.11.03	Update
11.11	OTHER	GTK + Libraries	B6848BA	1.4.gm.46.7	Update
11.11	NETWORKING	GbE PCI 1000B-T	GigEther-01	B.11.11.15	Update
11.11	OTHER	HA Monitors	B5736DA	A.04.00.02	Update
11.11	LANGUAGE	HP-UX Apache	hpuxwsApache	A.2.0.49.00	Update
11.11	NETWORKING	HP-UX IPFilter	B9901AA	A.03.05.09	Update
11.11	LANGUAGE	HP-UX Tomcat	hpuxwsTomcat	A.4.1.29.02	Update
11.11	LANGUAGE	HP-UX Tools	hpuxwsXml	A.2.00	Update
11.11	LANGUAGE	HP-UX Webmin	hpuxwsWebmin	A.1.070.00	Update
11.11	OTHER	HPUXOpenSSL	OpenSSL	A.00.09.07	New
11.11	OTHER	Ignite-UX	B5725AA	B.5.4.50	Update
11.11	LANGUAGE	JPI 1.3	T1455AA	1.3.1.13.01	Update
11.11	OTHER	Java Out-of-Box	JAVAOOB	2.03.00	Update
11.11	LANGUAGE	Java2 JDK 1.4	T1456AA	1.4.2.02.01	Update
11.11	LANGUAGE	Java2 JPI 1.4	T1458AA	1.4.2.02.01	Update
11.11	LANGUAGE	Java2 JRE 1.3	B9789AA	1.3.1.13.01	Update
11.11	LANGUAGE	Java2 JRE 1.4	T1457AA	1.4.2.02.01	Update
11.11	LANGUAGE	Java2 RTE Addon	T1457AAaddon	1.4.2.02.01	New
11.11	LANGUAGE	Java2 SDK 1.3	B9788AA	1.3.1.13.01	Update
11.11	LANGUAGE	Java2 SDK Addon	T1456AAaddon	1.4.2.02.01	New
11.11	LANGUAGE	Java3D 1.3	T1868AA	1.3.0.01.08	Update
11.11	LANGUAGE	Java3D for 1.4	T1869AA	1.3.0.01.08	Update
11.11	OTHER	MC DR Enabler	MCDREnabler	A.04.20	New
11.11	OTHER	MC SRDF	B6264BA	A.04.13	Update
11.11	OTHER	MCSG Ext for SAP	B7885BA	B.03.10	Update
11.11	OTHER	MetroClstr XP256	B8109BA	A.04.22	Update
11.11	OTHER	Mozilla	MOZILLA	1.4.0.01.04	Update
11.11	OTHER	Mozilla Source	MOZILLAsrc	1.4.0.01.04	Update
11.11	OTHER	PPU	T2351AA	B.07.00	Update
11.11	NETWORKING	RAID SA software	RAID-01	B.11.11.03	Update
11.11	NETWORKING	SCSI U320	scsiU320-00	B.11.11.01	Update
11.11	OTHER	SGeFF SW	T2388BA	A.01.00.00	New



Server Platform

Base	Category	Description	Product Number	Version	Update/New
11.11	OTHER	SGeRAC	T1859BA	A.11.16.00	Update
11.11	OTHER	Serviceguard	B3935DA	A.11.16.00	Update
11.11	OTHER	SwPkgBuilder	SwPkgBuilder	A.02.00.00	Update
11.11	OTHER	SysMgmtAgent	B8339BA	B.03.00.07	Update
11.11	OTHER	iCOD SW	B9073BA	B.06.02	Update
11.11	LANGUAGE	perl-non CPL	perl	D.5.8.0.B	Update
11.23	NETWORKING	Auto Port Aggreg	J4240AA	B.11.23.00	New
11.23	OTHER	Cluster Obj Mgr	B8324BA	B.03.00.00	Update
11.23	OTHER	ContCluster	T2346BA	A.04.02	New
11.23	OTHER	GTK + Libraries	B6848BA	1.4.gm.46.7	Update
11.23	OTHER	HP MPI	B6060BA	B.11.23.05	Update
11.23	NETWORKING	HP-UX IPFilter	B9901AA	A.03.05.06.	Update
11.23	OTHER	HPUXOpenSSL	OpenSSL	A.00.09.07	New
11.23	NETWORKING	InfiniBand-Core	IB4X-00	B.11.23.01	New
11.23	LANGUAGE	JPI 1.3	T1455AA	1.3.1.13.01	Update
11.23	OTHER	Java Out-of-Box	JAVAOOB	2.03.00	Update
11.23	LANGUAGE	Java2 JDK 1.4	T1456AA	1.4.2.02.01	Update
11.23	LANGUAGE	Java2 JPI 1.4	T1458AA	1.4.2.02.01	Update
11.23	LANGUAGE	Java2 JRE 1.3	B9789AA	1.3.1.13.01	Update
11.23	LANGUAGE	Java2 JRE 1.4	T1457AA	1.4.2.02.01	Update
11.23	LANGUAGE	Java2 SDK 1.3	B9788AA	1.3.1.13.01	Update
11.23	OTHER	MC SRDF	B6264BA	A.04.13	New
11.23	OTHER	MCSG Ext for SAP	T2357BA	B.03.10	Update
11.23	OTHER	MetroClstr XP256	B8109BA	A.04.22	New
11.23	OTHER	Mozilla	MOZILLA	1.4.0.01.04	Update
11.23	OTHER	Mozilla Source	MOZILLAsrc	1.4.0.01.04	Update
11.23	OTHER	SGeFF SW	T2389BA	A.01.00.00	New
11.23	OTHER	SGeRAC	T1907BA	A.11.16.00	Update
11.23	OTHER	Serviceguard	T1905BA	A.11.16.00	Update
11.23	OTHER	SysMgmtAgent	B8339BA	B.03.00.07	Update
11.23	OTHER	T64 Migr. Envir.	T2359AT	B.11.65	New



HP-UX 11i v1
Operating Environment



HP-UX 11i v1

Operating Environment

What's new in the HP-UX 11i v1 June 2004 release?

HP is pleased to announce the June 2004 release of HP-UX 11i v1 Operating Environment Update Release (OEUR). This release is available to support customers upon request only. Please read the following information to decide whether this release is suitable for you.

If you need detailed information on the changes in the June 2004 HP-UX 11i v1 Operating Environment, you can visit:

<http://docs.hp.com/hpux/os/11i/index.html> and click on the "Release Notes" link to go to the HP-UX 11i v1 June 2004 Release Notes.

Operating Environment (OE) Release Strategy

As communicated in December 2003, the HP-UX OE media will be updated twice a year starting with the June 2004 release. This does not affect the application releases, which will still remain on a quarterly cycle. Because of the timing, the Application media contained in the Application release and software depot may contain versions of products which are more recent than

those contained in the OE media. This is because the OE is built with the most recent versions of products available at the time of OE integration and testing. Versions of software products available after the integration and testing must wait until the next OE update cycle to be included in the OE media.

For June 2004, the HP-UX 11i v1 (B.11.11) OE media are updated. The Quality Packs and HWE bundles are also updated on this cycle with the appropriate OE change. HP will communicate information on the plans for future releases through our online communication at

<http://www.software.hp.com/RELEASES-MEDIA/>.



What's updated in the HP-UX 11i v1 June 2004 release?

Workstation/Server Specific Information

- Diagnostics updated to support rp3410-2 and rp4410-2. EMS Hardware Monitors updated to support MSA-30 U320 Parallel SCSI JBOD and MSA-1000 FC Disk Array.
- Hardware Enablement Patch Bundle updated to enable IDE disks, Core Serial I/O, and 3D Graphics on C8000 workstation; added support for HP StorageWorks SDLT600 Tape Drive; added support for new I/O cards; added support for new DVD and CD optical devices for HP servers and workstations.





HP-UX 11i Version 1 Operating Environment Applications

- Codeword iCOD updated to version 6.02 to incorporate a defect fix.
- Enterprise Cluster Master (ECM) Toolkit updated to version B.02.10 with the addition of a new toolkit for the Tomcat Java Servlet and the removal of Netscape applications.
- Event Monitoring Service updated to version A.04.00.02 to incorporate defect fixes.
- Graphics and Technical Computer Environment bundle updated to version B.11.11.20.03 with support for ATI FireGL X1 and ATI FireGL T2.
- GTK+ Libraries updated to version 1.4.gm.46.7 to support changes to the Operating Environments. No new functionalities added.
- High Availability (HA) Monitors updated to version A.04.00.02 to incorporate defect fixes.
- HP 3D Technology for the Java 2 Platform updated to incorporate packaging changes. No new functionality added.
- HP CIFS Client updated to version A.01.09.01 to incorporate defect fixes.
- HP Process Resource Manager updated to version C.02.02 with support of a version option, support of SSL encryption of login/password data, more consistent syslog messaging, and other changes.
- HP Serviceguard updated to version A.11.16 with new functionality, defect repairs, and support for future new hardware configurations.
- HP Serviceguard Manager updated to version A.04.00, which allows administrators to create, configure, monitor, and manage clusters and packages. HP Serviceguard Quorum Server updated to version A.02.00.01 to support future platforms.
- HP-UX Apache-based Web Server updated to version A.2.0.49 as a feature release which contains support for Microsoft FrontPage 2002, more pHP extensions, and numerous version upgrades.
- HP-UX HIDS v1.0 deprecated and planned for future obsolescence.
- HP-UX IPFilter updated to version A.03.05.09 with support for multi-level groups and for IP address ranges in IPFilter rules, as well as enhancements to DCA and to logging, memory allocation, and commands.
- HP-UX Tomcat-based Servlet Engine updated to version A.4.1.29.02 with Tomcat version upgraded to 4.1.29.02; mod_jk and related configuration files shipped with HP-UX Apache-based Web Server; and defect fix to the Tomcat Admin application.
- HP-UX Webmin-based Admin



updated to version A.1.070.00 as a full-feature release that contains numerous enhancements, including support for 32-bit Apache (if installed); backup, version management (RCS); retrieval of Apache configuration files and others.

- HP-UX Workload Manager updated to version A.02.02 with a new GUI that allows local and remote management of WLM systems; automatic resizing of node partitions (nPars) that use iCOD software; support for more WLM configuration options by the Configuration Wizard; and other changes.
- HP-UX Workload Manager Toolkits updated to version A.01.05 with utilities now using /opt/perl/bin/perl, as well as support for Apache 2. x and enhancements to utilitydc.
- HP-UX XML Web Server Tools updated to version A.2.00 as primarily a version upgrade release, with upgrades to Xerces-J, Xalan-J, Cocoon, and FOP.
- Ignite-UX updated to version B.5.4. x with several changes, including updates to the make_*_recovery tools and enhancements to the GUI.





New Product

- Java for HP-UX Add-on Standard C++ Runtime Libraries for the SDK and for the RTE now default-installed in all OEs.
- Java Out-of-Box updated to version 2.03.00 to incorporate defect fixes.
- Mozilla Application Suite updated to version 1.4.00.01 with full Japanese localization as well as other defect fixes and enhancements.

New Product

- OpenSSL added. OpenSSL is an open source cryptography toolkit that implements the Secure Sockets Layer (SSL v2 and v3) and Transport Layer Security (TLS v1) network protocols and related required cryptography standards.
- Pay Per Use updated to version B.07.00 so that either pricing model can be used as the metric and so that a processor cap can be specified.
- Perl updated to version 5.8.0 with better Unicode support, new IO and thread implementation, better numeric accuracy, and other enhancements.
- Plug-in (JPI) for the Java 2 Platform versions 1.3 and 1.4 only will be installed.

New Product

- Software Development Kit for the Java 2 Platform (full) 1.3 and 1.4 now delivered.

- Software Package Builder updated to version A.02.00 to allow detection of ambiguous objects and to support editing multiple Product Specification Files (PSFs) and open and view depots within the SPB GUI.
- Servicecontrol Manager updated to version 03.00.06 to incorporate defect fixes.

Networking and Mass Storage Drivers

- FibrChanI-01 updated to incorporate defect fixes.
- GigEther-01 updated to incorporate defect fixes.
- IEther-00 updated to incorporate defect fixes.
- RAID-01 updated to support the A9890A SmartArray 6402 card on PA-RISC systems.
- The scsiU320-00 bundle updated with quality and diagnostic improvements for Ultra320 SCSI solutions.

Installation

- Software Distributor updated to incorporate defect fixes.
- Update-UX updated to incorporate defect fixes.

General System Administration and Performance Monitoring

- HP-UX Buffer Cache Tunable Parameters (nbuf, bufpages, bufcache_max_pct, dbc_min_pct, dbc_max_pct) now deprecated.



- HP-UX Newadb now available on Software Pack.

Additional Materials

Disk and File Management

- Enhanced AutoFS now available on Software Pack.
- Portable File System (PFS) now obsolete. Equivalent functionality now provided and supported via CDFS with RockRidge Interchange extensions support.
- DeviceIDs now available on Software Pack.

Internet and Networking Services

- The landiag program and command now deprecated. Will be obsolete post HP-UX 11i v2.
- The lanscan command path will change post HP-UX 11i v2.
- The linkloop command path will change post HP-UX 11i v2.

Security

- Boot Authenticator for Standard Mode of HP-UX now available on Software Pack.

Programming

- HP-UX Shared Memory Extensions now available on Software Pack
- The pstat_getfile() interface now deprecated.
- Transition links deprecated and planned for future discontinuance.

Internet Express

Internet Express is a collection of Open Source Web, Internet and security services, which have been tested and qualified on HP-UX. Internet Express is an easily installed, configured and administered product. The open source components are configured through the web-based Webmin administration utility, which is shipped as part of the HP-UX Apache offering.



HP-UX Hardware Enablement (HWEEnable11i)

The Hardware Enablement (HWE) Program updates the content in the HWEEnable11i Patch Bundle, the HP-UX Support Tools (Online Diagnostics) and other HP-UX software to support hardware on HP systems with an HP-UX 11i v1 Operating Environment (OE). The HWEEnable11i bundle and the HP-UX Support Tools provide support for new and future systems, I/O adapters, and mass-storage products. This HP-UX software is labeled as required, ignited on new systems in HP manufacturing, and automatically loaded as part of any

11i v1 OE update.

In addition to the HP-UX 11i v1 OE media, the HWEEnable11i bundle is available at the IT Resource Center <http://itrc.hp.com> and at HP Software Depot: <http://software.hp.com>.

For information on firmware requirements, see the HP-UX 11i Version 1 Installation and Update Guide, available in your media kit, on the Instant Information DVD and at <http://docs.hp.com/hpux/os/11i/index.html>





Summary of Change

- Updated diagnostics support for the following PA-8800 servers:
 - rp3410-2 server with 1 or 2 processor cores (800 MHz & 1 GHz)
 - rp4410-2 server with 1 or 2 processor cores (800 MHz & 1 GHz)
- Enabled IDE disks, Core Serial I/O, and 3D Graphics support on new workstation:
 - C8000 workstation with one or two dual PA-8800 processor modules
- Updated EMS Hardware monitors to support the following peripherals:
 - MSA-30 U320 Parallel SCSI JBOD
 - MSA-1000 FC Disk Array
- Added SCSI driver support for the following tape drive:
 - HP StorageWorks SDLT600 Tape Drive
- Added support for the following new I/O cards:
 - A9890A - PCI-X 2-Channel SmartArray 6402 RAID U320
- Added support for the following new DVD Writer optical devices for HP servers:

Supported DVD Writer Optical Devices for Servers

Product Number	Product Description	Platforms
AB348A	DVD+RW Drive, Slim	rp34 xx
AB349A	DVD+RW Drive, Slim	rp4440
AB351A	DVD+RW Drive	rp8420, rp7420

- Added support for the following new DVD and CD optical devices for HP workstations:

Supported DVD Writer Optical Devices for Workstations

Product Number	Product Description	Platforms
AB615A	DVD+RW Drive	C8000
A8068B	DVD+RW Drive	BX00, C3XX0, J5X00, C8000
A7853B	CD-RW Drive BXX00	BX00, C3XX0, J5X00, C8000



HP-UX 11.i v1
Support Plus

HP-UX 11.i v1

Support Plus

HP-UX Support Plus June 2004 release

Hewlett-Packard is pleased to announce the June 2004 release of HP-UX Support Plus. These tested bundles include patches that fix HP-UX defects, enable new hardware, and provide diagnostic tools. Support Plus is available to customers upon request only. Please use the following information to decide whether this release is suitable for you.

Special Note

The March 2004 release was the **final** offering of Quality Pack (QPK) and Hardware Enablement (HWE) bundles for HP-UX 11.0 (B.11.00). This is in alignment with the discontinuance of HP-UX 11.0 on March 31, 2004.

While HP will no longer refresh these bundles after March 2004, you can still obtain them from the Support Plus web page at:

http://software.hp.com/SUPPORT_PLUS. Also, Hewlett-Packard will continue to provide new and recommended HP-UX 11.0 patches, as well as updated information about the patches in the March

2004 bundles, at the ITRC Resource Center. The URL is: <http://itrc.hp.com>.

ISEE extends remote support to Compaq systems

HP has expanded Instant Support Enterprise Edition (ISEE) to support a broader range of servers and operating systems, including Compaq-branded servers. HP has also lowered the level of support required to qualify for ISEE, making the solution available to customers who have contracts, HP Care Pack services, or warranties providing HP hardware onsite support coverage with next-business-day response or better.

ISEE makes it easier to manage highly diverse IT environments by providing a single remote support solution for multiple operating systems and technologies. In addition to HP 9000 servers, HP Integrity servers, Netservers, Virtual Arrays, and network devices, ISEE is now available for HP ProLiant servers, AlphaServers, VAX servers, Enterprise Virtual Arrays, XP storage devices, and many peripherals. ISEE also supports multiple operating systems,



including HP-UX, Microsoft Windows for enterprises, OpenVMS, Tru64 UNIX, Novell Netware, Sun Solaris (a feature of Integrated Support) and several variants of Linux—Red Hat, United, and SUSE. With one solution ISEE provides remote support for open, multi-vendor environments.

HP ISEE's proactive remote monitoring, uses continuous hardware event monitoring and automated notification, to proactively identify and prevent potential critical problems. Through remote diagnostic scripts and vital configuration information collected, HP ISEE enables fast restoration of supported systems, storage and network devices.

Start using ISEE today, so that you can reap the benefits of HP's next generation remote support solution. Don't let your HP systems go without remote monitoring support. HP ISEE A.03.50 is available on the June release of the Support Plus media for installation as the bundle ISEEPlatform within the HPUXAuxTools directory. ISEE can also be downloaded from www.software.hp.com by selecting Instant Support Enterprise Edition under the "internet ready and networking" section or under the "Featured Products" section. For more information on ISEE, visit http://www.hp.com/hps/hardware/hw_enterprise.html





HP-UX 11.0 Support Plus CD-ROM content in March 04

HP-UX 11.0 Support Plus CD-ROM content in the March 04 release

This information is communicated to you as a reminder only; the HP-UX 11.0 version is not contained in this June 2004 release.

If your hardware platform is an	And you want to	You should install	Revision date
HP-UX Workstation or Server	Use the diagnostic tools	OnlineDiag bundle from the depot /cdrom/DIAGNOSTICS/B.11.00	March 2004
HP-UX Server	Use the latest Instant Support Enterprise Edition tools (requires an HP support contract, Care Pack service or onsite warranty support)	ISEEPlatform (A.03.00.029) bundle from the depot /cdrom/HPUXAuxTools	March 2004
HP-UX Server	Prepare your server to use iCOD (Instant Capacity on Demand) functionality	ICOD-purchase (B9073AA bundle) from /cdrom/DIAGNOSTICS/B.11.00	September 2002
HP-UX Workstation or Server	Enable systems and supported hardware products (including I/O adapters and devices)	Hardware Enablement Bundle from /cdrom/HWE1100	March 2004
HP-UX Workstation or Server	Bring all core and graphics software to the currently supported patch level and install critical patches for core, add-on I/O and networking drivers	Quality Pack Bundle from /cdrom/QPK1100	March 2004



HP-UX 11i v1 Support Plus CD-ROM content in June 2004

If your hardware platform is an	And you want to	You should install	Revision date
HP-UX Workstation or Server	Use the latest diagnostic tools	OnlineDiag bundle from the depot /cdrom/DIAGNOSTICS/B.11.11	June 2004
HP-UX Server	Use the latest Instant Support Enterprise Edition tools (requires an HP support contract, Care Pack service or onsite warranty support)	ISEEPlatform (A.03.50) bundle from the depot /cdrom/HPUXAuxTools	June 2004
HP-UX Workstation or Server	Prepare your server to use iCOD (Instant Capacity on Demand) functionality	iCOD-purchase (B9073AA bundle) from /cdrom/DIAGNOSTICS/B.11.11	December 2003
HP-UX Workstation or Server	Prepare your server to use iCOD (Instant Capacity on Demand) functionality	iCOD-utility (T1322AA bundle) from /cdrom/DIAGNOSTICS/B.11.11	December 2003
HP-UX Workstation or Server	Install patches for HP-UX 11iv1 which are required to install and update the OS	Required 11iv1 Patch Bundle from /cdrom/BUNDLE11i	June 2003
HP-UX Workstation or HP-UX Server	Enable new systems and supported hardware products (e.g. I/O adapters and devices)	Hardware Enablement Bundle:from /cdrom/HWEnable11i	June 2004
HP-UX Workstation or Server	Update HP-UX application software (e.g. HP MC/ServiceGuard product)	Gold Apps Bundle (GOLDAPPS11i) from /cdrom/GOLDQPK11i (Updated in June and December)	June 2004
HP-UX Workstation or Server	Update HP-UX core software	Gold Base Bundle (GOLDBASE11i) from /cdrom/GOLDQPK11i (Updated in June and December)	June 2004



Requesting HP-UX Support Plus

If you are interested in receiving this release of HP-UX Support Plus on CD-ROM, please return the enclosed reply-card together with the prepaid envelope or use one of the following options.

Support Plus bundles are available individually from HP Software Depot. The Software Depot url is: <http://software.hp.com>. Click on "enhancement releases". Then look for the bundles in the list. There are informational web pages for each bundle. You must register and then may download any of them.

You can also order CD media through the HP Software Update Manager. Follow the links from the IT Resource Center. The url is: www.itrc.hp.com and for Europe

make sure you reach the European website. Click on "more..." in the "maintenance / support" area. Then select "standard patch bundles" in the "patching" area. Then select "Obtain Support Plus from Software Update Manager."

You may also register for any of the following Software Update Manager service features:

- notification of the availability of new software update products related to your support agreement
- information about changes to the Software Update Manager
- set your preferences for e-mail and frequency of reporting
- view software information articles on-line in the Software Update Manager.



The HP logo is displayed in white on a green background. It consists of a stylized 'h' and 'p' where the 'h' is formed by two vertical bars of different heights connected at the top, and the 'p' is a simple lowercase letter.

© Copyright 2004 Hewlett-Packard Development Company, L.P.
The information contained herein is subject to change without notice. The only warranties for HP products and services are set forth in the express warranty statements accompanying such products and services. Nothing herein should be construed as constituting an additional warranty. HP shall not be liable for technical or editorial errors or omissions contained herein.
Printed in Europe June 2004

