



hp OpenView internet usage manager CDMA solution

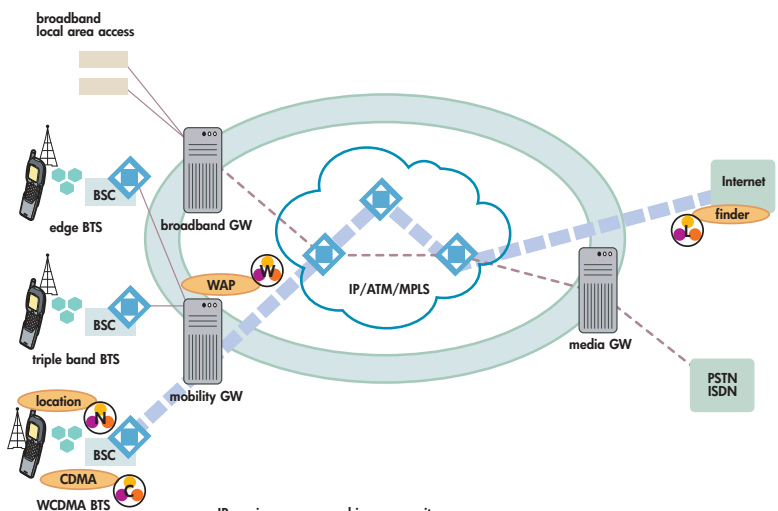
turning value creation into value capture

revenue assurance for the mobile internet

Hewlett-Packard has already taken the lead in mediation for IP and GPRS with its Internet Usage Manager (IUM), a fully distributed, flexible platform for convergent mediation. Now HP adds the HP OpenView IUM CDMA solution, a specialized set of extensions that process usage data from network equipment conforming to the CDMA2000 specification.

The IUM CDMA solution is a CDMA data and voice billing mediation solution that arms you with information about usage of resources in your mobile network. It correlates all usage against the user's IP session, aggregates usage records according to configurable rules, identifies errors and handles reprocessing, and enables highly comprehensive audits. No matter what your network contains—CDMA switches and IWF devices, WAP gateways, SMS centers, IP services, and more—you stay on top of each different type of usage and billing option. You turn value creation into value capture.

getting mobility usage data can be complex and difficult, but the IUM CDMA solution lets you corral your mobile network



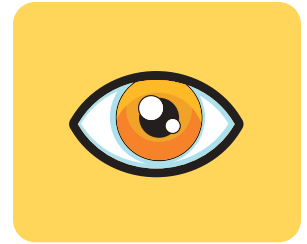
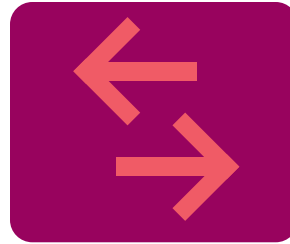
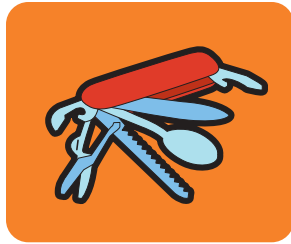
IP service usage record is a composite of asynchronous usage

- CDMA voice CDR and RADIUS accounting
- WAP usage from log correlated by IMSI
- application usage from log
- GPS from network

benefits of the IUM CDMA solution

- focused, complete usage capture for a mobile IP user
- more effective management of the mediation data stream
- easier integration in the mobile network
- billing flexibility, with minimal impact on existing rating and billing systems
- timely data from an event-based processing model
- low cost of deployment, greater profitability from mobile services

scalable
automated
sophisticated



key features of the IUM CDMA solution

- **focused set of IUM objects**—optimized for the CDMA network.
- **CDR/UDR collectors**—handle call detail records (CDRs) from CDMA voice switches, plus usage detail records (UDRs) from Mobile IP infrastructure. Include parselet architecture that allows you to extend the standard parsing behavior. Use the IUM Plug-in Developer's Kit (PDK) to create new parselets, too.
- **business rules in session collector**—minimize and simplify customizations required to reflect differences in CDMA switch implementations from different vendors.
- **selection of transport functions**—you can choose such typical transports as FTP, RADIUS, and FTAM file transfer between the CDMA network and the mediation infrastructure.
- **scalable WAP processing**—WAP collectors provide validation, filtering, and optimized aggregation of WAP logs to ensure scalable processing of WAP usage.
- **highly scalable correlation**—data collection from various network elements is automatically correlated to the user session data. Partitioning ensures the scalability needed by tier-one operators.
- **improved performance**—correlated data can be aggregated prior to delivery to the rating system, limiting the impact and improving performance.
- **automated error reprocessing**—identifies errors during parsing or rule processing and moves them to the operator's repair function. The IUM CDMA solution automatically finds all associated usage, performs correlation, and submits the repaired data to billing.
- **sophisticated audit services**—allow usage records to be tracked from the time they enter Internet Usage Manager until they exit. You can easily trace revenue leakage back to the network switches and their operation.



other hp OpenView usage management solutions

Interested in a convergent mediation solution for your wireline or mobile network? Look at these other closely related HP OpenView products:

- **Internet Usage Manager (IUM)**—the industry's premier IP mediation and usage management platform
- **IUM GPRS and IUM Prepaid Data Solutions**—extend IUM to equipment and services in the mobile and prepaid data services environment
- Need to make business decisions quickly? Take a look at **Dynamic Netvalue Analyzer**, which analyzes the data from IUM and gives you up-to-the-minute business planning information.

hp added value services

In an effort to provide you with predictable cost structures and business efficiency gain, HP offers a comprehensive set of services that include Consulting, Outsourcing, Support, Education, and Finance. For more information, go to the HP Services Web site at www.hp.com/hps.

product specifications

collectors	<ul style="list-style-type: none"> • PDSN/RADIUS CDMA data collector packages • CDMA voice switch collector packages • WAP collector packages
special documentation and toolkits	<ul style="list-style-type: none"> • installation documents • high-level solution guide for designing CDMA collector hierarchy • detailed configuration guide for CDMA • performance guides for system sizing

supported data sources

Many types of network equipment and other data sources are supported, and the IUM CDMA solution makes it very straightforward to accommodate new devices. For a complete listing, see www.hp.com/usage.



configuration

The HP OpenView IUM CDMA solution is available for HP-UX, Windows NT® 4.0, NT Terminal Server Edition, Windows® 2000, Sun Solaris, Linux, and other platforms. The size and number of machines for any of the platforms depend on the service provider's performance requirements, high availability requirements, and network topology.

ordering

hp OpenView IUM CDMA solution

- Machine license
- Single collector LTU

hp OpenView internet usage manager

hp OpenView IUM developer assist

take the next step

To find out more about CDMA and other HP OpenView Usage Management Solutions go to www.hp.com/usage, or call the HP OpenView Usage Management Solutions Hotline at +1 408 447 4815.



The information in this document is subject to change without notice.

Windows and Windows NT are U.S. registered trademarks of Microsoft Corporation.

© Copyright Hewlett-Packard Company 2001.



Printed in USA 11/01
5980-8404EN