



hp

how to manage  
your HP-UX  
software updates

December 2004

HP-UX 11i v1 /11i v2  
for hp9000  
workstations and servers



## TABLE OF CONTENTS

<b>HP-UX 11i v1 / 11i v2 Application Release</b> .....	<b>4</b>
Product summary for December 2004 .....	5
Licensing information for December 2004 .....	12
New and updated products for December 2004 .....	13
<b>HP-UX 11i v1 Operating Environment</b> .....	<b>19</b>
<b>Operating Environment Update Release (OEUR) Strategy</b>	
A - HP-UX 11i version 2 Available for HP 9000 PA-RISC-based Servers ..	21
B - Future HP-UX updates .....	22
<b>What's New in the HP-UX 11i v1 December 2004</b>	
<b>Operating Environment Update Release?</b>	
A - Updates to the HP-UX 11i v1 in December 2004	
Operating Environment Media .....	23
B - Additional Software Media in the December 2004	
HP-UX 11i v1 OE Shipments .....	26
C - HP-UX Hardware Enablement (HWEnable11i) .....	26
<b>HP-UX 11.i v1 Support Plus</b> .....	<b>28</b>
Latest release of HP-UX Support Plus .....	29
HP-UX 11.0 Support Plus CD-ROM content in the March 04 release ..	31
HP-UX 11i v1 Support Plus CD-ROM content in December 2004 .....	32
Requesting HP-UX Support Plus .....	33



**HP-UX 11i v1/11i v2  
Application Release**

# HP-UX 11i v1/11i v2

## Application Release

### Product summary for December 2004

These releases provide you with the latest versions of applications for the HP-UX 11i v1 / 11i v2 Operating Environment.

You are entitled to receive one of these releases if one or more of your products under support contract has been updated.

If you wish more information about software updates or support matrices for HP-UX application releases, please access the following url:  
<http://www.software.hp.com/RELEASES-MEDIA/>

New product means the product is new with this consolidated release. Updated product means the product previously existed and is being updated with this consolidated release.



### Coming in the Spring of 2005

In the Spring/Summer of 2005, you will see the improved HP Instant Information product which is a comprehensive collection of software documentation on CD/DVD.

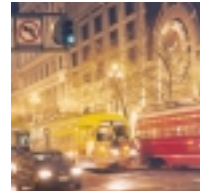
Major enhancements to look for are:

- Allows customers to use a standard web browser rather than the proprietary DynaText browser
- Content in HTML file format
- Offer a similar look and feel to docs.hp.com

### MLIB - Update

The main features with the release are:

- CXML BLAS to help users of CXML on Alpha Servers migration to PA-RISC and Itanium platforms.
- VMATH (Vecor Intrinsic Math Library)
- BCSLIB\_EXT (Out of Core Sparse solver and Out of Core Sparse Eigen Problems. d. Additional performance tuning in BLAS routines)



This release mainly applies to

- a. System Admin
- b. application developers who are looking for ways to speed up development of new appli-

cations and shorten the execution time of long-running technical applications. See :

<http://www.hp.com/go/MLIB>

#### MLIB Product(s) Submitted to this release

Product	Description	Platform	Version
B6029AA	MLIB Documents	700,800	11.11
B6029AA	MLIB Documents	700,800	11.23
B6061AA	MLIB Math Lib	700,800	11.11
B6061AA	MLIB Math Lib	700,800	11.23

#### Npar Command - New

The top three things that are occurring with the product :

- 1) The enhanced commands are made as WBEM clients and allows remote partition and complex management.
- 2) The parunlock command allow user to cancel any pending changes to the Stable Complex Configuration Data of the target complex.

- 3) The parcreate and parmodify will allow user to specify/modify for each cell the amount of total cell memory that will be configured as cell local (non-interleaved) memory.

The update applies to "System Admin managing UNIX patch updates".

#### NParCommand Product(s) Submitted to this release

Product	Description	Platform	Version
nparCmd	npar commands	700,800	11.11
NPar	HW Par Provider	700,800	11.11



### ParMgr - Update

Features of this release are:

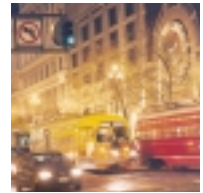
1. This release brings Partition Manager v2.0 to HP-UX 11i v1 (B.11.11). Partition Manager v2.0 offers several significant improvements over Partition Manager v1.0, including a new, more graphical user interface and configuration of nPartitions on remote complexes.
2. The nPartition Provider now supports WBEM version 2.0. This release includes all updates that have previously been released for HP-UX 11i v2 (B.11.23).
3. Defect fixes for both products.

This release is for System Admin managing UNIX patch updates and/or planning UNIX hardware updates.)

### ParMgr Product(s) Submitted to this release

Product	Description	Platform	Version
ParMgr	ParMgr	700,800	11.11





### HP PRM - Update

PRM delivers consistent performance and response times under heavy loads. PRM dynamically allocates CPU, real memory, and disk I/O bandwidth to business-critical applications and user groups. By focusing the appropriate amount of system resources where they're needed, when they're needed, PRM prevents an application's peak processing from impacting the performance of other applications on the same HP-UX server.

New Features:

- support for HP-UX 11i V2 on HP 9000 servers.

Reason for upgrade:

- applies to system administrators who are deploying HP 9000 servers running HP-UX 11i V2 or to system administrators upgrading HP 9000 servers to HP-UX 11i V2.

#### ProcessResource Product(s) Submitted to this release

Product	Description	Platform	Version
B3835DA	PRM sw/lic	700	11.11
B3835DA	PRM sw/lic	700	11.23
B3835DA	PRM sw/lic	800	11.11
B3835DA	PRM sw/lic	800	11.23
B7697BA	PRM Lib	700	11.11
B7697BA	PRM Lib	700	11.23
B7697BA	PRM Lib	800	11.11
B7697BA	PRM Lib	800	11.23
B8733DA	PRM Docs	800	11.11
B8733DA	PRM Docs	800	11.23

### SCM - Update

The top three things that are occurring with the product:

- Updated user guide
- Fixed swverify errors for 11.11 update & other SD log errors

- Fixed erroneous file creation during update

This release applies mostly to System Admin managing UNIX patch/product updates

#### SMC Product(s) Submitted to this release

Product	Description	Platform	Version
B8339BA	SysMgmtAgent	700,800	11.11
B8339BA	SysMgmtAgent	700,800	11.23



### Migration Environment, Tru64 UNIX STK and HP-UX STK - New

The Tru64 UNIX Migration Environment for HP-UX is a runtime environment on HP-UX 11i v2 that contains Tru64 UNIX Application Programming Interfaces (APIs), development tools, and commands and utilities to assist customers in transitioning their custom applications from Tru64 UNIX to HP-UX on Integrity servers.

The top three things that are occurring with the product:

- Customer is a Tru64 UNIX customer interested in transitioning to HP-UX 11i v2.
- Customer has Tru64 UNIX custom code to be transitioned to HP-UX.
- Customer wants to preserve Tru64 UNIX build environment.

This product is for developers.

#### CTMLab Product(s) Submitted to this release

Product	Description	Platform	Version
Tru64Mi	T64 Migr. Envir.	700,800	11.23

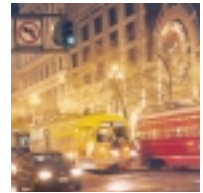
### Tru64 UNIX Software Transition Kit (STK) - New

The Tru64 UNIX Software Transition Kit (STK) helps customers identify and resolve compatibility issues between Tru64 UNIX and HP-UX 11i, greatly simplifying the porting process to Integrity servers. Its file scanning utilities use a clear methodology for code analysis, providing sound advice for each API encountered in scanned Tru64 UNIX C, C++ and Fortran source code files as well as makefiles and shell scripts.

The top three things that are occurring with the product:

- Customer is a Tru64 UNIX customer interested in transitioning to HP-UX 11i v2.
- Customer has Tru64 UNIX custom code to be transitioned to HP-UX.
- Customer wants a "do-it-yourself" approach.

This product is for developers.



## HP-UX Software Transition Kit (STK) - New

The HP-UX Software Transition Kit (STK) is a collection of tools and documents designed to help customers transition their HP-UX applications to the next version of HP-UX on either PA-RISC or the Itanium® platform.

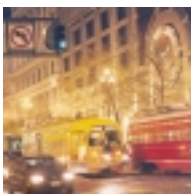
The HP-UX STK uses a clear methodology for code analysis, providing sound advice for each API encountered in scanned HP-UX source code. It helps developers identify and resolve potential compatibility issues between each version of the HP-UX operating system, greatly simplifying the deployment of their applications from release to release. The STK also contains extensive developer's documentation, including white papers, best practices and usage guides.

1. The top three things that are occurring with the product:
  - Customer is HP-UX customer interested in transitioning to HP-UX 11i v2.
  - Customer needs to understand compatibility issues between the PA-RISC and Itanium® platforms.
  - Customer has developed his/her own in-house applications.
2. Whom does the update apply to? (System Admin managing UNIX patch updates and/or planning UNIX hardware updates.)

This product is for developers.

### STK Product(s) Submitted to this release

Product	Description	Platform	Version
STK-HPU	HP-UX STK	700,800	11.23
STK-Tru	HP-UX STK Tru64	700,800	11.23



### WLM 2.3 - Update

HP-UX WLM integrates and automates how CPU resources are allocated to partitions by providing a dynamic, automated control system that spans the PRM groups, pSets, vPars and nPars contained in a single server. HP-UX WLM allows businesses to automatically re-allocate CPU resources and ensure that business goals regarding application performance are being met. With HP-UX WLM, customers can deliver predictable response times for mission-critical applications under a variety of load conditions—even when applications are sharing limited system resources. If the system runs out of resources to satisfy all the configured goals, the performance impact is isolated to applications with lower-priority goals. HP-UX WLM is integrated with Utility

pricing offerings to advise and/or activate additional CPU capacity. Finally, HP-UX WLM is tightly integrated with HP Serviceguard to ensure that Serviceguard packages receive the required resources no matter which node in the cluster the package is running on, yet allowing those resources to be fully utilized by other applications when they are not required.

#### New Features:

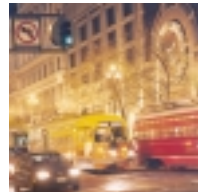
- support for HP-UX 11i V2 on HP 9000 servers.

#### Reason for upgrade:

- applies to system administrators who are deploying HP 9000 servers running HP-UX 11i V2 or to system administrators upgrading HP 9000 servers to HP-UX 11i V2.

### WLM Product(s) Submitted to this release

Product	Description	Platform	Version
B8843CA	Workload Manager	800	11.11
B8843CA	Workload Manager	800	11.23
B8844CA	WLM Doc	800	11.11
B8844CA	WLM Doc	800	11.23
WLMUtil	WLM Monitor GUI	700,800	11.11
WLMUtil	WLM Monitor GUI	700,800	11.23



## Licensing information for December 2004

Some applications require codeword certificate to unlock the software. The password is supplied with your software shipment or for some products you will receive a "password request form" enclosed with your shipment asking you to:

1. Generate it on line on Software License Manager
2. Generate it on line on Web ware
3. View it on line thru Software Update Manager
4. Contact HP Licensing Services
5. Contact Password Center

### Your HP US licensing contact:

Hewlett-Packard Company  
HP Licensing Services North America  
Phone: +1(650) 960-5111  
or (800) 538-1733  
Fax: +1(650) 960-5670  
or (800) 541-2633  
E-mail: [hplicense.na@hp.com](mailto:hplicense.na@hp.com)  
Business hours: Monday to Friday  
6:00am - 4:30pm PST

### Your HP European licensing contact:

Hewlett-Packard Ireland  
HP Licensing Services Ireland  
Phone: +353 (0)91 75 40 06  
Fax: +353 (0)91 70 1002  
E-mail: [codeword\\_europe@hp.com](mailto:codeword_europe@hp.com)  
Business hours: Monday to Friday  
8:30am - 5:30pm GMT

### Your HP Asia Pacific contact:

Hewlett-Packard Japan  
HP Licensing Services Japan  
Phone: 0120.42.1231 (Inside Japan)  
or 0426.48.9310 (Inside Japan)  
or +81.426.48.9312 (Outside Japan)  
Fax: 0 120.52.1231 (Inside Japan)  
or +81 426.39.4983 (Outside Japan)  
E-mail: [sw\\_codeword@hp.com](mailto:sw_codeword@hp.com)  
Business hours: Monday to Friday  
9:00am - 5:30pm GMT+9

For some other products it is recommended to:

1. Generate the password on line thru Web Ware web site at the url: [www.webware.hp.com](http://www.webware.hp.com), or
2. For additional password assistance you may contact one of the following license centers

### Hewlett-Packard Password Center for U.S.A:

Phone: (801) 431-1597 or (800) 326-0411  
Fax: (801) 431-3654  
Hours of operation: 6:00 am to 6:00 pm MST  
[Americas\\_password@cnd.hp.com](mailto:Americas_password@cnd.hp.com)

### Hewlett-Packard Password Center for Europe/Africa:

Phone: (+31-55-543-4642)  
Fax: (+31-55-543-4645)  
Hours of operation: 9:00 to 18:00 CET  
[Europe\\_password@cnd.hp.com](mailto:Europe_password@cnd.hp.com)

### Hewlett-Packard Password Center for Asia Pacific:

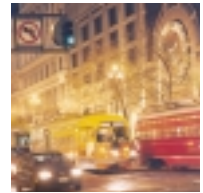
Phone: (outside Japan) +81-3-3227-5672  
Phone: (within Japan) 03-3227-5264  
Fax: (+81-3-3227-5238)  
Hours of operation: 9:00 am to 5:00 pm JST  
[Asia\\_password@cnd.hp.com](mailto:Asia_password@cnd.hp.com)



## New and updated products for December 2004

### Workstation platform

Base	Category(1)	Description	Product Number	Version	Update/New(2)
11.11	CASE	C SB LTU -Eng	B6449EB	E.06.97	Update
11.11	CASE	C SB LTU -Jpn	B6450EB	E.06.97	Update
11.11	CASE	C++ SB LTU -Eng	B6451EB	E.06.97	Update
11.11	CASE	C++ SB LTU -Jpn	B6452EB	E.06.97	Update
11.11	LANGUAGE	C/ANSI C Dev LTU	B3899BA	B.11.11.12	Update
11.11	NETWORKING	Dual Gbe S/W	IEther-00	B.11.11.07	Update
11.11	NETWORKING	FCD PCI-X Adaptr	FibrChan1-01	B.11.11.04	Update
11.11	LANGUAGE	Fortran90 LTU	B3907DB	B.11.11.90	Update
11.11	OTHER	GTK + Librariies	B6848BA	1.4.gm.46.9	Update
11.11	NETWORKING	GbE PCI 1000B-T	GigEther-01	B.11.11.17	Update
11.11	OTHER	Glance + M/M	B3691AA	C.03.86.00	Update
11.11	OTHER	Glance + Pak	B3699AA	C.03.86.00	Update
11.11	OTHER	GraphicsTechCom	B6268AA	B.11.11.20.	Update
11.11	LANGUAGE	HP Pascal LTU	B3903BA	B.11.11.09	Update
11.11	LANGUAGE	HP aC++ LTU	B3911DB	C.03.60	Update
11.11	LANGUAGE	HP-UX Apache	hpuxwsApache	A.2.0.52.00	Update
11.11	NETWORKING	HP-UX IPFilter	B9901AA	A.03.05.10.	Update
11.11	NETWORKING	HP-UX IPSec	J4256AA	A.02.00	Update
11.11	OTHER	HP-UX STK	STK-HPUX	B.11.24	New
11.11	LANGUAGE	HP-UX Tomcat	hpuxwsTomcat	A.4.1.29.04	Update
11.11	LANGUAGE	HP-UX Webmin	hpuxwsWebmin	A.1.070.02	Update
11.11	OTHER	HW Par Provider	NPar	B.11.11.01.	New
11.11	OTHER	Ignite-UX	B5725AA	C.6.1.34	Update
11.11	OTHER	Java Out-of-Box	JAVAOOB	2.03.01	Update
11.11	LANGUAGE	Java2 JDK 1.4	T1456AA	1.4.2.04.00	Update
11.11	LANGUAGE	Java2 JPI 1.4	T1458AA	1.4.2.04.00	Update
11.11	LANGUAGE	Java2 JRE 1.4	T1457AA	1.4.2.04.00	Update
11.11	LANGUAGE	Java2 RTE Addon	T1457AAaddon	1.4.2.04.00	New
11.11	LANGUAGE	Java2 SDK Addon	T1456AAaddon	1.4.2.04.00	New
11.11	LANGUAGE	Java3D 1.3	T1868AA	1.3.0.01.11	Update



## Workstation platform

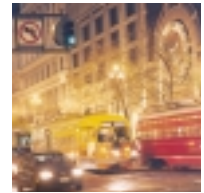
Base	Category(1)	Description	Product Number	Version	Update/New(2)
11.11	LANGUAGE	Java3D for 1.4	T1869AA	1.3.0.01.11	Update
11.11	OTHER	LDAP-UX Integ	J4269AA	B.03.30.01	Update
11.11	OTHER	MLIB Math Lib	B6061AA	B.09.00.01	Update
11.11	OTHER	MWA Wk M/M	B4965AA	C.03.86.00	Update
11.11	OTHER	Mozilla	MOZILLA	1.6.0.01.00	Update
11.11	OTHER	Mozilla Source	MOZILLAsrc	1.6.0.01.00	Update
11.11	CORE	NParcommands	NParCmds	A.01.02	New
11.11	OTHER	OpenSSL	OpenSSL	A.00.09.07-	New
11.11	OTHER	PRM Lib	B7697BA	C.02.03.03	Update
11.11	OTHER	PRM sw/lic	B3835DA	C.02.03.03	Update
11.11	OTHER	ParMgr	ParMgr	B.11.11.02.	Update
11.11	NETWORKING	RAID SA software	RAID-01	B.11.11.04	Update
11.11	NETWORKING	SCSI U320	scsiU320-00	B.11.11.02	Update
11.11	OTHER	Secure Shell	T1471AA	A.03.81.004	Update
11.11	OTHER	SwPkgBuilder	SwPkgBuilder	A.02.00.03.	Update
11.11	OTHER	SysMgmtAgent	B8339BA	B.03.00.09.	Update
11.11	NETWORKING	TL PCI/HSC Adapt	FibrChanI-00	B.11.11.12	Update
11.11	OTHER	WLM Monitor GUI	WLMUtilities	A.02.03.03	New
11.11	OTHER	iCOD SW	B9073BA	B.11.11.06.	Update
11.11	LANGUAGE	perl-non CPL	perl	D.5.8.0.E	Update
11.23	CASE	C SB LTU - Eng	B6449EB	E.11.23.02	Update
11.23	CASE	C SB LTU - Jpn	B6450EB	E.11.23.02	Update
11.23	CASE	C++ SB LTU - Eng	B6451EB	E.11.23.02	Update
11.23	CASE	C++ SB LTU - Jpn	B6452EB	E.11.23.02	Update
11.23	LANGUAGE	C/ANSI C Dev LTU	B3899BA	C.11.23.03	Update
11.23	LANGUAGE	Fortran90 LTU	B3907DB	B.11.23.21	Update
11.23	OTHER	Glance + M/M	B3691AA	C.03.86.00	Update
11.23	OTHER	Glance + Pak	B3699AA	C.03.86.00	Update
11.23	LANGUAGE	HP aC++ LTU	B3911DB	C.11.23.03	Update
11.23	OTHER	HP-UX STK	STK-HPUX	B.11.24	New
11.23	OTHER	HP-UX STK Tru64	STK-Tru64	B.11.22	New
11.23	OTHER	Ignite-UX	B5725AA	C.6.0.120	Update
11.23	LANGUAGE	Java2 JDK 1.4	T1456AA	1.4.2.04.00	Update
11.23	LANGUAGE	Java2 JPI 1.4	T1458AA	1.4.2.04.00	Update
11.23	LANGUAGE	Java2 JRE 1.4	T1457AA	1.4.2.04.00	Update
11.23	LANGUAGE	Java2 RTE Addon	T1457AAaddon	1.4.2.04.00	New



## Workstation platform

Base	Category(1)	Description	Product Number	Version	Update/New(2)
11.23	LANGUAGE	Java2 SDK Addon	T1456AAaddon	1.4.2.04.00	New
11.23	OTHER	MLIB Math Lib	B6061AA	B.09.00.01	Update
11.23	OTHER	MWA Svr M/M	B4965AA	C.03.86.00	Update
11.23	OTHER	Mozilla	MOZILLA	1.6.0.01.00	Update
11.23	OTHER	Mozilla Source	MOZILLAsrc	1.6.0.01.00	Update
11.23	OTHER	Secure Shell	T1471AA	A.03.81.004	Update
11.23	OTHER	SwPkgBuilder	SwPkgBuilder	A.02.00.03.	Update
11.23	OTHER	T64 Migr. Envir.	T64MigEnv	B.13.143	New





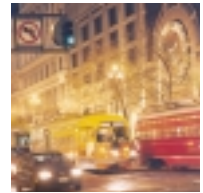
## Server Platform

Base	Category(1)	Description	Product Number	Version	Update/New(2)
11.11	CASE	C SB LTU -Eng	B6445EB	E.06.97	Update
11.11	CASE	C SB LTU -Jpn	B6446EB	E.06.97	Update
11.11	CASE	C++ SB LTU -Eng	B6447EB	E.06.97	Update
11.11	CASE	C++ SB LTU -Jpn	B6448EB	E.06.97	Update
11.11	LANGUAGE	C/ANSI C Dev LTU	B3901BA	B.11.11.12	Update
11.11	OTHER	ContCluster	T2346BA	A.05.00	Update
11.11	NETWORKING	Dual Gbe S/W	IEther-00	B.11.11.07	Update
11.11	OTHER	ECM Toolkit	B5139EA	B.02.20	Update
11.11	OTHER	ECM Toolkit	B5139DA	B.02.20	Update
11.11	NETWORKING	FCD PCI-X Adaptr	FibrChan1-01	B.11.11.04	Update
11.11	LANGUAGE	Fortran90 LTU	B3909DB	B.11.11.90	Update
11.11	OTHER	GTK + Librariies	B6848BA	1.4.gm.46.9	Update
11.11	NETWORKING	Gbe PCI 1000B-T	GigEther-01	B.11.11.17	Update
11.11	OTHER	Glance + M/M	B3693AA	C.03.86.00	Update
11.11	OTHER	Glance + Pak	B3701AA	C.03.86.00	Update
11.11	LANGUAGE	HP Pascal LTU	B3905BA	B.11.11.09	Update
11.11	LANGUAGE	HP aC++ LTU	B3913DB	C.03.60	Update
11.11	LANGUAGE	HP-UX Apache	hpuxwsApache	A.2.0.52.00	Update
11.11	NETWORKING	HP-UX IPFilter	B9901AA	A.03.05.10.	Update
11.11	NETWORKING	HP-UX IPSec	J4256AA	A.02.00	Update
11.11	OTHER	HP-UX STK	STK-HPUX	B.11.24	New
11.11	LANGUAGE	HP-UX Tomcat	hpuxwsTomcat	A.4.1.29.04	Update
11.11	LANGUAGE	HP-UX Webmin	hpuxwsWebmin	A.1.070.02	Update
11.11	OTHER	HW Par Provider	NPar	B.11.11.01.	New
11.11	OTHER	Ignite-UX	B5725AA	C.6.1.34	Update
11.11	OTHER	Java Out-of-Box	JAVAOOB	2.03.01	Update
11.11	LANGUAGE	Java2 JDK 1.4	T1456AA	1.4.2.04.00	Update
11.11	LANGUAGE	Java2 JPI 1.4	T1458AA	1.4.2.04.00	Update
11.11	LANGUAGE	Java2 JRE 1.4	T1457AA	1.4.2.04.00	Update
11.11	LANGUAGE	Java2 RTE Addon	T1457AAaddon	1.4.2.04.00	New
11.11	LANGUAGE	Java2 SDK Addon	T1456AAaddon	1.4.2.04.00	New
11.11	LANGUAGE	Java3D 1.3	T1868AA	1.3.0.01.11	Update
11.11	LANGUAGE	Java3D for 1.4	T1869AA	1.3.0.01.11	Update
11.11	OTHER	LDAP-UX Integ	J4269AA	B.03.30.01	Update
11.11	OTHER	MC CA EVA	T2403BA	A.01.00	New
11.11	OTHER	MC/SerGd NFS Kit	B5140BA	A.11.11.04	Update
11.11	OTHER	MCSG Ext for SAP	B7885BA	B.03.12	Update



## Server Platform

Base	Category(1)	Description	Product Number	Version	Update/New(2)
11.11	OTHER	MLIB Math Lib	B6061AA	B.09.00.01	Update
11.11	OTHER	MWA Svr M/M	B4967AA	C.03.86.00	Update
11.11	OTHER	Mozilla	MOZILLA	1.6.0.01.00	Update
11.11	OTHER	Mozilla Source	MOZILLAsrc	1.6.0.01.00	Update
11.11	CORE	NParcommands	NParCmds	A.01.02	New
11.11	OTHER	OpenSSL	OpenSSL	A.00.09.07-	New
11.11	OTHER	PRM Lib	B7697BA	C.02.03.03	Update
11.11	OTHER	PRM sw/lic	B3835DA	C.02.03.03	Update
11.11	OTHER	ParMgr	ParMgr	B.11.11.02.	Update
11.11	NETWORKING	RAID SA software	RAID-01	B.11.11.04	Update
11.11	NETWORKING	SCSI U320	scsiU320-00	B.11.11.02	Update
11.11	OTHER	Secure Shell	T1471AA	A.03.81.004	Update
11.11	OTHER	SwPkgBuilder	SwPkgBuilder	A.02.00.03.	Update
11.11	OTHER	SysMgmtAgent	B8339BA	B.03.00.09.	Update
11.11	NETWORKING	TL PCI/HSC Adapt	FibrChan1-00	B.11.11.12	Update
11.11	OTHER	WBEM SDK	T1434BA	A.02.00.05	Update
11.11	OTHER	WBEM Services	B8465BA	A.02.00.05	Update
11.11	OTHER	WLM Monitor GUI	WLMUtilities	A.02.03.03	New
11.11	OTHER	WLM Toolkits	T1302AA	A.01.07.03	Update
11.11	OTHER	Workload Manager	B8843CA	A.02.03.03	Update
11.11	OTHER	iCOD SW	B9073BA	B.11.11.06.	Update
11.11	LANGUAGE	perl-non CPL	perl	D.5.8.0.E	Update
11.23	CASE	C SB LTU - Jpn	B6446EB	E.11.23.02	Update
11.23	CASE	C SB LTU- Eng	B6445EB	E.11.23.02	Update
11.23	CASE	C++ SB LTU - Eng	B6447EB	E.11.23.02	Update
11.23	CASE	C++ SB LTU - Jpn	B6448EB	E.11.23.02	Update
11.23	LANGUAGE	C/ANSI C Dev LTU	B3901BA	C.11.23.03	Update
11.23	OTHER	ContCluster	T2346BA	A.05.00	New
11.23	OTHER	ECM Toolkit	T1909BA	B.02.21	Update
11.23	LANGUAGE	Fortran90 LTU	B3909DB	B.11.23.21	Update
11.23	OTHER	Glance + M/M	B3693AA	C.03.86.00	Update
11.23	OTHER	Glance + Pak	B3701AA	C.03.86.00	Update
11.23	LANGUAGE	HP aC++ LTU	B3913DB	C.11.23.03	Update
11.23	OTHER	HP-UX Dev Kit	HPDesktopDev	B.11.23.08	New
11.23	OTHER	HP-UX STK	STK-HPUX	B.11.24	New
11.23	OTHER	HP-UX STK Tru64	STK-Tru64	B.11.22	New
11.23	OTHER	Ignite-UX	B5725AA	C.6.0.120	Update
11.23	LANGUAGE	Java2 JDK 1.4	T1456AA	1.4.2.04.00	Update



## Server Platform

Base	Category(1)	Description	Product Number	Version	Update/New(2)
11.23	LANGUAGE	Java2 JPI 1.4	T1458AA	1.4.2.04.00	Update
11.23	LANGUAGE	Java2 JRE 1.4	T1457AA	1.4.2.04.00	Update
11.23	LANGUAGE	Java2 RTE Addon	T1457AAaddon	1.4.2.04.00	New
11.23	LANGUAGE	Java2 SDK Addon	T1456AAaddon	1.4.2.04.00	New
11.23	OTHER	MC CA EVA	T2403BA	A.01.00	New
11.23	OTHER	MC/SerGd NFS Kit	B5140BA	A.11.23.03	Update
11.23	OTHER	MCSG Ext for SAP	T2357BA	B.03.12	Update
11.23	OTHER	MLIB Math Lib	B6061AA	B.09.00.01	Update
11.23	OTHER	MWA Svr M/M	B4967AA	C.03.86.00	Update
11.23	OTHER	Mozilla	MOZILLA	1.6.0.01.00	Update
11.23	OTHER	Mozilla Source	MOZILLAsrc	1.6.0.01.00	Update
11.23	OTHER	Secure Shell	T1471AA	A.03.81.004	Update
11.23	OTHER	SwPkgBuilder	SwPkgBuilder	A.02.00.03.	Update
11.23	OTHER	T64 Migr. Envir.	T64MigEnv	B.13.143	New
11.23	OTHER	WBEM SDK	T1434BA	A.02.00.05	Update
11.23	OTHER	WBEM Services	B8465BA	A.02.00.05	Update

### (1) Category:

- **language**

Application associated with compilers.

- **networking**

Software driver products that have hardware cards.

- **case**

Computer Aided Software Engineering: it is a computer method to organize software.

- **other**

Software products not "language" and "networking".

### (2) Update:

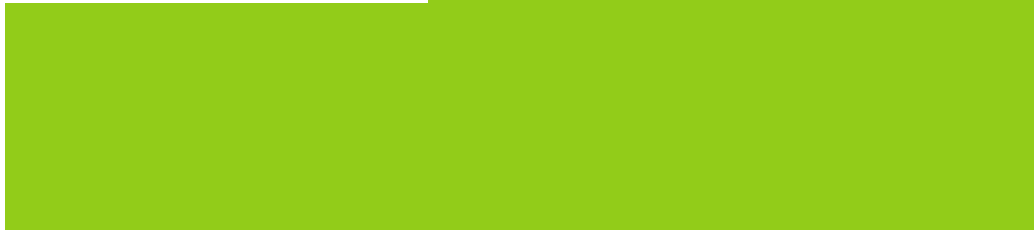
You may have already received this product in a standalone CD, and it is included in this Application release as an update.

- **New:**

Your product is new to the Operating System (OS) stream or platform (Workstation and/or Server) and is included in this Application release for the first time.



**HP-UX 11i v1**  
**Operating Environment**



# HP-UX 11i v1

## Operating Environment

### Operating Environment Update Release (OEUR) Strategy

HP is pleased to announce the latest release of HP-UX 11i v1 Operating Environment Update Release (OEUR). The December 2004 HP-UX 11i v1 OEUR is available to support customers upon request only. Please read the following information to decide whether this release is suitable for you.

If you need detailed information on the changes in the December 2004 HP-UX 11i v1 Operating Environment, you can visit <http://docs.hp.com/hpux/os/11i/index.html> and click on the "Release Notes" link to go to the HP-UX 11i v1 December 2004 Release Notes.





### A - HP-UX 11i version 2 Available for HP 9000 PA-RISC-based Servers

The latest update to HP-UX 11i version 2 is now for distribution upon your request to HP. This latest update offers a number of exciting features

for both users of HP 9000 (PA-RISC-based) systems and Integrity (Itanium-based) systems.

This update to HP-UX 11i v2 is known by one of these names.

Name	Usage
HP-UX 11i version 2 September 2004	update Standard name and DVD labels
HP-UX 11.23	VUF name

With the September 2004 update, HP-UX 11i v2 is now supported on HP 9000 servers as well as Integrity servers. Therefore, customers with both PA-RISC and Itanium HP enterprise servers can use the same HP-UX version on both.

This HP-UX 11i v2 update adds a number of new and exciting features. In addition to a common release for HP 9000 and Integrity servers, one of the most prominent is the scaling up to 128 processors in Superdome systems on dual-core PA-8800 based systems. There are many other improvements and upgrades in all the functional areas of HP-UX, including management utilities, disk and file management, high availability with Serviceguard, networking, security, commands and system calls, programming languages and utilities, and other areas. The update for HP-UX 11i version 2 in September 2004 provides important

improvements in virtually all facets of HP-UX. You can get full details from the Release Notes at <http://docs.hp.com>.

HP-UX 11i version 2 is supported on all current HP Integrity servers. The following HP 9000 PA-RISC servers are fully supported:

- A-Class/rp2400 series except A180 and A180C, which had 32-bit processors
- L-Class/rp5400 series
- rp3400 series
- rp4400 series
- All N-Class/rp7400 series
- All rp8400 series
- All HP 9000 Superdome

Minimum Firmware Requirements for HP-UX 11i v2 September 2004: <http://docs.hp.com/hpux/os/11iv2/index.html#System%20Firmware>.



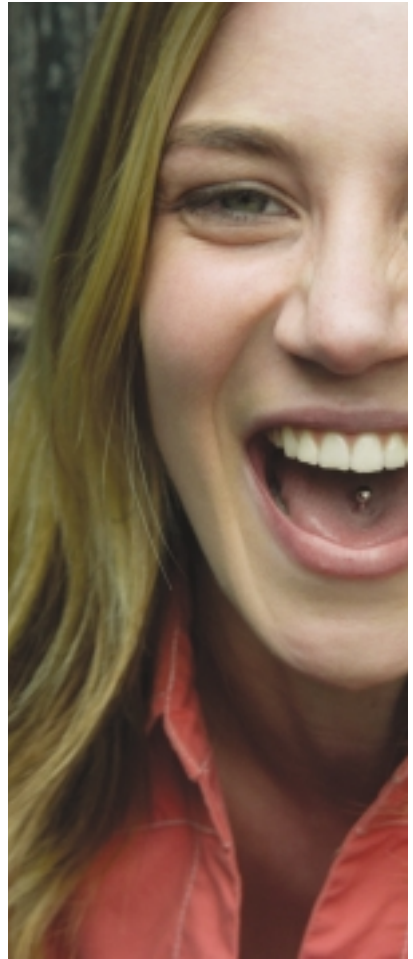
Legacy HP 9000 product families, including D, K, R, T and V-Class are not supported on HP-UX 11i version 2.

If you are interested, please contact your HP Support Contract Administrator to receive this exciting update to HP-UX 11i version 2.

### **B - Future HP-UX updates**

HP plans to continue to provide updates to both HP-UX 11i version 1 and HP-UX 11i version 2 Operating Environment (OE) during 2005. HP-UX 11i version 1 OE updates will of course continue to be of interest for customers running HP 9000 (PA-RISC-based) servers, while the HP-UX 11i version 2 OE updates will be of interest to both HP 9000 and Integrity (Itanium-based) customers.

HP will continue to provide information on the plans for future releases through our online communications at <http://www.hp.com/software/releases/releases-media2/>.





## What's New in the HP-UX 11i v1 December 2004 Operating Environment Update Release?

### A - Updates to the HP-UX 11i v1 in December 2004 Operating Environment Media

#### nPartition (Hard Partition) Systems

- New Product: Enhanced NPartition Commands (NParCmds) added.
- New Product: The nPartition Provider supports WBEM version 2.0.
- Partition Manager updated to version 2.0 with several significant improvements, including a new, more graphical user interface and configuration of nPartitions on remote complexes.

#### Workstation/Server Specific Information

- Graphics Hardware Support now includes ATI Radeon 7000 and the ATI FireGL X3 (basic 2D functionality) graphics cards.
- Hardware Enablement Patch Bundle updated for diagnostics to support latest PA8800 processor modules and 4GB DIMM; also enables ATI Radeon 7000 and ATI FireGL X3 adapters for C8000.
- New Product: HP Instant Support Enterprise Edition now available in the Operating Environments.

#### HP-UX 11i Version 1 Operating Environment Applications

- Codeword iCOD upgraded to version 6.50 to include better integration with partition management by using WBEM for data discovery. iCOD now has a software dependency on the nPartition provider and WBEM.
- Enterprise Cluster Master (ECM) Toolkit updated to version B.02.20 with scripts for Oracle 10g database applications, enhancements to the Oracle Toolkit, and support for the Tomcat Servlet.
- GlancePlus Pak updated to version C.03.86.00 with new parm file parameters and new metrics, as well as enhancements to gpm and glance.
- Graphics and Technical Computer Environment bundle updated with support for ATI Radeon 7000 with software rendering.
- HP 3D Technology for the Java 2 Platform updated to incorporate packaging changes.
- HP MLIB updated to version 9.0 with the new features VMATH, SOLVERS, and CXML.
- HP Process Resource Manager



- updated to version C.02.03 with changes in usage of /var/tmp/, and changes to the products available in the bundles.
- HP Serviceguard NFS Toolkit (formerly MC/ServiceGuard NFS Toolkit) updated to version A.11.11.04 with improvement to the failover performance for rpcbind failures. In addition, version A.11.11.04 specifies that the length of the NFS\_FLM\_SCRIPT variable is limited to 13 characters in the nfs.mon script.
  - HP WBEM Services for HP-UX updated with defect fixes as well as support for CIM Process Indications as defined by the DMTF WBEM Specification. A version of the OpenSSL software is no longer packaged with the product software.
  - HP-UX Apache-based Web Server updated to version 2.0.52.00 as primarily a security and bug fix release with Apache and mod\_perl upgraded.
  - HP-UX IPFilter updated to version A.03.05.10.04 to incorporate defect fixes.
  - HP-UX Software Development Kit and Runtime Environment for the Java 2 Platform updated to version 1.4.2.04 to provide more recent Java technology.
  - HP-UX Tomcat-based Servlet Engine updated to version A.4.1.29.04 with upgrades to Tomcat and Commons-DBCP.
  - HP-UX Webmin-based Admin updated to version 1.070.02 to incorporate defect fixes.
  - HP-UX Workload Manager updated to version A.02.03.01 with new options for wlmaudit and wlmgui.
  - HP-UX Workload Manager Toolkits updated to version A.01.07.01 with modifications to PPUTK's utilitydc and updated example configurations.
  - Ignite-UX updated to version C.6.1. x with enhancements to the make\_net\_recovery and make\_tape\_recovery commands. The impi and impi\_psm drivers added to the 11i v1 and 11i v2 WINSTALL installation kernels.
  - Java for HP-UX Add-on Standard C++ Runtime Libraries for the SDK and for the RTE updated to version 1.4.2.04 to incorporate defect fixes.
  - Java Out-of-Box updated to version 2.03.01 to provide enhancements and defect fixes.
  - Mozilla Application Suite updated to version 1.6.0.01 and contains full Japanese localization as well as other defect fixes, security fixes, and enhancements.
  - OpenSSL updated to version A.00.09.07-d to eliminate extra messages at installation time.
  - Perl updated with two installation-related changes.
  - Plug-in (JPI) for the Java 2 Platform updated to the version 1.4.2.04 to provide more recent Java



technology.

- PRM Libraries added to prevent reboots when upgrading HP Process Resource Manager.
- Servicecontrol Manager (SCM) updated to version B.03.00.09.02 to incorporate only minor updates. SCM has been deprecated; its replacement is HP Systems Insight Manager.
- Software Package Builder updated version A.02.00. to allow for the display of the current policy file being used for validation and to incorporate defect fixes.

## **Networking and Mass Storage Drivers**

- FibrChanI-00 updated to version B.11.11.12 with support for Sequence Level Error Recovery (SLER) based on FCP-2 standards. Support added for the A6795A PCI Tachyon XL2 Adapter Card in the C8000 workstation.
- FibrChanI-01 updated to support the to-be-released AB465A card.
- GigEther-01 updated to support the to-be-released AB465A card and to incorporate defect fixes.
- Hardware Enablement Patch Bundle updated to provide an OLA fix for A9891A, AB286A, and future I/O adapters.
- IEther-00 updated to version B.11.11.07 with support for the to-be-released AB290A and AB545A cards, and to incorporate defect fixes.

- RAID-00 supports the A5856A card, which has been discontinued. RAID-00 will remain in HP-UX 11i v1 to support previously purchased A5856A cards.
- RAID-01 updated to support the A9891A Smart Array 6404 card and to incorporate defect repairs. In addition, the RAID-01 software has been changed from Selectable to Always-Installed.
- scsiU320-00 updated to incorporate defect fixes and to support the to-be-released AB290A card. The scsiU320-00 driver bundle also supports the A7173A card, which has now been released.

## **Installation**

- Software Distributor (SD) updated with new versions of the gzip and swpackage commands.
- Update-UX updated to incorporate defect fixes.

## **General System Administration and Performance Monitoring**

- EnhancedMMAP now available on Software Pack.
- MtlOscan11i now available on Software Pack.
- NEWFUSER11i now available on Software Pack.



## Security

- HP-UX Shadow Passwords now available on Software Pack.
- HP-UX Strong Random Number Generator now available on Software Pack.

## Programming

- HP-UX Software Transition Kit updated in September 2004 to version 2.4 with tools and documentation to help you successfully transition your software to HP-UX 11i (version 1 [B.11.11], 1.6 [B.11.22], as well as version 2 [B.11.23 and B.11.23 September 2004]).

## B - Additional Software Media in the December 2004 HP-UX 11i v1 OE Shipments

### Software Pack

The Software Pack (SPK) Program delivers a variety of optional HP-UX 11i v1 core enhancements on the Software Pack CD. The product notes with description on individual enhancements can be found under the DOCS directory on the Software Pack media. In addition to being available on the media, the core enhancements can also be downloaded from HP Software Depot (<http://software.hp.com>):

1. Go to <http://software.hp.com>
2. Search for "SWPACK"
3. Click on "HP-UX Software Pack (Optional HP-UX 11i v1 Core Enhancements)".

At this site you can read descriptions of specific products, as well as download them.

In December 2004, the following features are added to the Software Pack collection:

- > EnhancedMMAP
- > MtiOscan11i
- > NEWFUSER11i
- > HP-UX Shadow Passwords
- > HP-UX Strong Random Number Generator

## Internet Express

Internet Express is a collection of Open Source Web, Internet, and security services, which have been tested and qualified on HP-UX. Internet Express is an easily installed, configured and administered product. Some key the open source components are configured through the web-based Webmin administration utility, which is shipped as part of the HP-UX Apache offering.

## C - HP-UX Hardware Enablement (HWEnable11i)

The Hardware Enablement (HWE) Program releases a quarterly update of the HWEnable11i Patch Bundle, HP-UX Support Tools (Online Diagnostics), and other HP-UX software to support the hardware used with HP-UX systems. The HWEnable11i bundle and Online Diagnostics provide support for new and future systems, I/O adapters, and mass-storage products. This HP-



UX software is labeled as required, ignited on new systems in HP manufacturing, and automatically loaded as part of any 11i OE update. It is included on the 11i OE media and on the 11i v1 Support Plus CD.

In addition to the HP-UX 11i v1 OE media, the HWEnable11i bundle is available at the IT Resource Center (<http://itrc.hp.com>) and at HP Software Depot (<http://software.hp.com>).

For information on firmware requirements, see the HP-UX 11i Version 1 Installation and Update Guide, available in your media kit,

on the Instant Information DVD, and at <http://docs.hp.com/hpux/os/11i/index.html>.

The following are the changes in the December 2004 HWEnable11i bundle:

- Updated diagnostics to support the latest PA8800 processor modules and 4GB DIMM:
  - CPU and DIMM support for rp3410/rp3440 and rp4440 servers, as well as a to-be-released server.
  - New PA-RISC processor for rp7420, rp8420, and Superdome servers.
- Enabled the ATI Radeon 7000 and ATI FireGL X3 adapters for the





**HP-UX 11.i v1**  
**Support Plus**

# HP-UX 11.i v1

## Support Plus

### Latest release of HP-UX Support Plus

HP is pleased to announce the latest release of HP-UX 11i v1 Support Plus. These tested bundles include patches that fix HP-UX defects, enable new hardware, and provide diagnostic tools. Support Plus is available to customers upon request only. Please use the following information to decide whether this release is suitable for you.

#### Special Note:

The March 2004 release was the final offering of Quality Pack (QPK) and Hardware Enablement (HWE) bundles for HP-UX 11.0 (B.11.00). This is in alignment with the discontinuance of HP-UX 11.0 on March 31, 2004.

While HP will no longer refresh these bundles after March 2004, you can still obtain them from the Support Plus web page at

[http://www.software.hp.com/SUPPORT\\_PLUS](http://www.software.hp.com/SUPPORT_PLUS). Also, HP will continue to provide new and recommended HP-UX 11.0 patches, as well as updated information about the patches in the March 2004 bundles, at the ITRC Resource Center. The URL is: <http://itrc.hp.com>.

#### ISEE is now available on the Operating Environment / Application media

The ISEE application was initially added to the Operating Environment (OE) and Application Release (AR) media with the 11i Version 2 release in September 2004, and has now been included on the December media for both HP-UX 11i Version 1 and HP-UX 11i Version 2.

The ISEE software will also be included on the December 2004 release of the HP-UX Support Plus media for HP-UX 11i Version 1; however, this will be the last release of Support Plus that will include the ISEE application. Going forward, the ISEE software will only be offered on the OE and AR media.

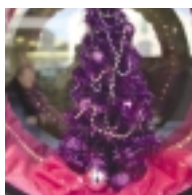




The ISEE software on the OE and AR media releases will be instant ignited, which means that it will be automatically loaded on all systems in the factory before shipment. The ISEE software can be enabled on customer systems by performing minimal configuration tasks as outlined in the OE/AR documentation.

ISEE can also be downloaded from [software.hp.com](http://software.hp.com) by selecting Instant Support Enterprise Edition under the "internet ready and networking" section or under the "Featured Products" section. For more information on ISEE, visit [http://www.hp.com/hps/hardware/hw\\_enterprise.html](http://www.hp.com/hps/hardware/hw_enterprise.html)





## HP-UX 11.0 Support Plus CD-ROM content in the March 04 release

This information is communicated to you as a reminder only; the HP-UX 11.0 version is not contained in this December 2004 release

<b>If your hardware platform is an</b>	<b>And you want to</b>	<b>You should install</b>	<b>Revision date</b>
HP-UX Workstation or Server	Use the diagnostic tools	OnlineDiag bundle from the depot /cdrom/DIAGNOSTICS/B.11.00	March 2004
HP-UX Server	Use the latest Instant Support Enterprise Edition tools (requires an HP support contract, Care Pack service or onsite warranty support)	ISEEPlatform (A.03.00.029) bundle from the depot /cdrom/HPUXAuxTools	March 2004
HP-UX Server	Prepare your server to use iCOD (Instant Capacity on Demand) functionality	ICOD-purchase (B9073AA bundle) from /cdrom/DIAGNOSTICS/B.11.00	September 2002
HP-UX Workstation or Server	Enable systems and supported hardware products (including I/O adapters and devices)	Hardware Enablement Bundle from /cdrom/HWE1100	March 2004
HP-UX Workstation or Server	Bring all core and graphics software to the currently supported patch level and install critical patches for core, add-on I/O and networking drivers	Quality Pack Bundle from /cdrom/QPK1100	March 2004



## HP-UX 11i v1 Support Plus CD-ROM content in December 2004

If your hardware platform is an	And you want to	You should install	Revision date
HP-UX Workstation or Server	Use the latest diagnostic tools	OnlineDiag bundle from the depot /cdrom/DIAGNOSTICS/B.11.11	December 2004
HP-UX Server	Use the latest Instant Support Enterprise Edition tools (requires an HP support contract, Care Pack service or onsite warranty support)	ISEEPlatform (A.03.50) bundle from the depot /cdrom/HPUXAuxTools	June 2004
HP-UX Workstation or Server	Prepare your server to use iCOD (Instant Capacity on Demand) functionality	ICOD-purchase (B9073AA bundle) from /cdrom/DIAGNOSTICS/B.11.11	December 2003
HP-UX Workstation or Server	Prepare your server to use iCOD (Instant Capacity on Demand) functionality	ICOD-utility (T1322AA bundle) from /cdrom/DIAGNOSTICS/B.11.11	December 2003
HP-UX Workstation or Server	Install patches for HP-UX 11iv1 which are required to install and update the OS	Required 11iv1 Patch Bundle from /cdrom/BUNDLE11i	June 2003
HP-UX Workstation or HP-UX Server	Enable new systems and supported hardware products (e.g. I/O adapters and devices)	Hardware Enablement Bundle:from /cdrom/HWEnable11i	December 2004
HP-UX Workstation or Server	Update HP-UX application software (e.g. HP MC/ServiceGuard product) Applications Quality Pack patch bundle, which has all stable, defect-fix patches for the Operating Environment (OE) applications.	Gold Apps Bundle (GOLDAPPS11i) from /cdrom/GOLDQPK11i (Updated in June and December)	December 2004
HP-UX Workstation or Server	Update HP-UX core software Base Quality Pack patch bundle, which has all stable, defect-fix patches for core HP-UX, graphics, and networking drivers.	Gold Base Bundle (GOLDBASE11i) from /cdrom/GOLDQPK11i (Updated in June and December)	December 2004

For additional information on the bundles, you may also visit the [http://itrc.hp.com/estaff/bin/doc.pl/screen=estaffDocs/?File=patches\\_main/hpux\\_bundles\\_overview.htm](http://itrc.hp.com/estaff/bin/doc.pl/screen=estaffDocs/?File=patches_main/hpux_bundles_overview.htm) web pages on the IT Resource Center.



## Requesting HP-UX Support Plus

If you are interested in receiving this release of HP-UX Support Plus on CD-ROM, please return the enclosed reply-card together with the prepaid envelope or use one of the following options

Support Plus bundles are available individually from HP Software Depot. The Software Depot url is: <http://software.hp.com> Click on 'enhancement releases' Then look for the bundles in the list. There are informational web pages for each bundle. You must register and then may download any of them

You can also order CD media through the HP Software Update Manager:

1. Follow the links from the IT Resource Center. The URL is: [www.itrc.hp.com](http://www.itrc.hp.com) and for Europe, make sure you reach the European website.
2. Click on "more..." in the "maintenance / support" area.
3. Then select "standard patch bundles" in the "patching" area.
4. Then select "Obtain Support Plus from Software Update Manager."

You may also register for any of the following Software Update Manager service features:

- notification of the availability of new software update products related to your support agreement
- information about changes to the Software Update Manager
- set your preferences for e-mail and frequency of reporting
- view software information articles on-line in the Software Update Manager





© Copyright 2004 Hewlett-Packard Development Company, L.P.  
The information contained herein is subject to change without notice. The only warranties for HP products and services are set forth in the express warranty statements accompanying such products and services. Nothing herein should be construed as constituting an additional warranty. HP shall not be liable for technical or editorial errors or omissions contained herein.  
Printed in Europe June 2004

