



hp

**how to manage  
your HP-UX  
software updates**

**march 2004**

**HP-UX 11.0/11i v1/11i v2  
for hp9000  
workstations and servers**







Dear Customer,

We are pleased to present to you our HP-UX software updates brochure of March 2004.

This brochure contains all the information you need about HP-UX products - applications, patches, technical support availability dates and more.

This invaluable tool provides assistance and advice to help you manage your application and operating system updates effectively.

We aim to tailor our service to your requirements, so don't hesitate to share your comments, remarks and suggestions with us.

- by mail:  
[es3.communication@hp.com](mailto:es3.communication@hp.com)
- at the following address:  
HP Centre de compétences France  
Emea Software Supply Solutions  
Customer Relationship Services - Case courrier 65  
38049 Grenoble CEDEX 9

We thank you for your confidence in us and hope you enjoy reading our brochure.

Yours Faithfully,

HP Company



## TABLE OF CONTENTS

<b>Important news you need to know about</b> .....	<b>7</b>
Enhanced IT Resource Center (ITRC) Capabilities - Reminder .....	8
Discontinuance announcements .....	9
<b>HP-UX 11.0/11i v1/11i v2 Application Release</b> .....	<b>11</b>
Newly released or updated products summaries for March 2004 .....	12
Licensing information .....	17
Newly released or updated products for March 2004 .....	18
<b>HP-UX 11.0 Operating System</b> .....	<b>25</b>
HP-UX 11.0 Install/Update/Recovery media for March 2004 .....	26
<b>HP-UX 11i v2 Operating Environment Update Release</b> .....	<b>29</b>
What's New in the HP-UX 11i v2 March 2004 Release? .....	30
Updates to the HP-UX 11i v2 in March 2004 .....	31
HP-UX Hardware Enablement (HWEnable11i) .....	34
Products removal, discontinuance and replacement plan .....	36
<b>HP-UX 11.0 Support Plus</b> .....	<b>37</b>
Latest release of HP-UX Support Plus .....	38
HP-UX 11.0 Support Plus CD-Rom content .....	40
HP-UX 11.i v1 Support Plus CD-Rom content .....	41
Requesting HP-UX Support Plus .....	42





**Important news  
you need  
to know about**

# Important news you need to know about

## Enhanced IT Resource Center (ITRC) Capabilities - Reminder

### It is easier to order software updates online !

HP has enhanced its IT Resource Center (ITRC) web site's online software update ordering and management capabilities. If your support agreements, with software update support, are registered and linked with the ITRC you can now use Software Update Manager (SUM) with no additional enrollment steps.

When you use SUM to manage your IT infrastructure, you can:

- request physical delivery of software updates online
  - view status of online software update requests
  - view online request history
- download software and documentation for entitled updates
  - can download and obtain physical media
  - have multiple quantities available per release when downloaded
- manage multiple support agreements concurrently
- **manage your software update notification method**
  - **select the e-mail notification option to eliminate hardcopy notification and learn of**

### software updates sooner

#### - eliminate delays in physical/paper ordering and processing

- view software support deliverables and your user profile
- provide on-line feedback

To enroll in this online application, which is available with no additional cost to you, go to:

<http://itrc.hp.com> and click on "Software Update Manager (SUM)" hyperlink.



## Discontinuance Announcements

### HP-UX 11.0 Support Plus

HP is offering the final Quality Pack (QPK) and Hardware Enablement (HWE) bundles for HP-UX 11.0 (B.11.00) in this March 2004 release. This is in alignment with the discontinuance strategy of HP-UX 11.0.

While HP will no longer refresh these bundles after the March 2004 version, you can still obtain them from the Support Plus web page at [http://software.hp.com/SUPPORT\\_PLUS](http://software.hp.com/SUPPORT_PLUS).

HP will continue to provide new and recommended HP-UX 11.0 patches. You will also find these bundles at the ITRC Resource Center at the following url: <http://itrc.hp.com>, under "maintenance and Support" section click on "patch database".

### HP-UX 11.0 Core

HP is offering the final Install/Update/Recovery refresh for HP-UX 11.0 (B.11.00) in this March 2004 release. This is in alignment with the end of sales of HP-UX 11.0 Servers on March 31, 2004 and HP-UX 11.0 Workstations on September 30, 2004.





**HP-UX 11.0/11i v1/11i v2  
Application Release**

# HP-UX 11.0/11i v1/11i v2

## Application Release

### Newly released or updated products summaries for March 2004

This release provides you with the latest versions of applications for the HP-UX 11.0 Operating System and 11i v1/11i v2 Operating Environment.

You are entitled to receive one of this release if one or more of your products under support contract has been updated.

If you wish more information about software updates or support matrices for HP-UX application releases, please access the following url:

<http://www.software.hp.com/RELEASES-MEDIA/>

New product means the product is newly released with this application release. Updated product means the product previously existed and is being updated with this consolidated release.

#### **FTAM: new product**

HP FTAM version E.08.01 for HP-UX 11i v2 provide the following feature: Support for IPF FTAM API libraries (32 bit and 64 bit), 32 bit binaries for IPF. So FTAM applications can be compiled on IPF, linked with IPF libraries and run on IPF.

Product	Description	Platform	Version
J2163B	FTAM/9000	700	11.23



### SPB: product updated

HP Software Package Builder (SPB) provides a visual method to create and edit software packages using the HP-UX Software Distributor (SD) package format. Once software is packaged, it can easily be transferred to a distribution medium, mass produced, and installed by administrators. The SPB GUI provides a window into the software package

structure, showing attributes that can be set for each package element. SPB dynamically loads packaging policies and validates software package attributes against these policies. The SPB command line interface (CLI) can also perform validation of software package attributes against policies and supports automated edits to the software package specification.

Product	Description	Platform	Version
SwPkgBu	SPB 11.23	700,800	11.23

### OTS: product updated

HP OTS/9000 version **C.09.04** for HP-UX 11.0 provides the following new feature:

- RFC1006 multiport listening. RFC1006 can be configured to

listen on multiple tcp ports and hence multiple RFC1006 NSAPs can be used on a machine with a single IP address (or single lan card).

Product	Description	Platform	Version
32070B	OTS/9000	800	11.0
J2160B	OTS/9000	700	11.0

### OTS: product updated

HP OTS/9000 version **C.11.01** for HP-UX 11i v1 provides the following new feature:

- RFC1006 multiport listening. RFC1006 can be configured to

listen on multiple tcp ports and hence multiple RFC1006 NSAPs can be used on a machine with a single IP address (or single lan card).

Product	Description	Platform	Version
32070B	OTS/9000	800	11.11
J2160B	OTS/9000	700	11.11



### PRM: product updated

HP Process Resource Manager has been updated to support HP-UX WLM 2.2, including support for empty processor sets.

This update is targeted to customers who are implementing HP-UX WLM 2.2, and any new HP Process Resource Manager installations.

Product	Description	Platform	Version
B3835DA	PRM sw/lic	700	11.0
B3835DA	PRM sw/lic	700	11.11
B3835DA	PRM sw/lic	700	11.23
B3835DA	PRM sw/lic	800	11.0
B3835DA	PRM sw/lic	800	11.11
B3835DA	PRM sw/lic	800	11.23
B7697BA	PRM Sw Libs	700,800	11.0
B7697BA	PRM Sw Libs	700,800	11.11
B7697BA	PRM Sw Libs	700,800	11.23
B8733DA	PRM Docs	800	11.0
B8733DA	PRM Docs	800	11.11
B8733DA	PRM Docs	800	11.23





### Tru64 UNIX: new product

The Tru64 UNIX Migration Environment for HP-UX is a compatibility layer running on HP-UX 11i v2 that contains Tru64 UNIX Application Programming Interfaces (APIs), development tools, commands and utilities to assist customers in transitioning their custom applications from Tru64 UNIX to HP-UX on Itanium(r)-based systems. You are concerned by this product if:

- you are a Tru64 UNIX customer interested in transitioning to HP-UX 11i v2.
- You have Tru64 UNIX custom code to be transitioned to HP-UX.

Tru64 UNIX Migration Environment is a new product on the Application CD.

This product is for developers

Product	Description	Platform	Version
T2359AT	T64 Migr. Envir.	700,800	11.23

### Web Base Enterprise Management: product updated

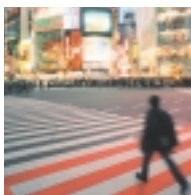
This update is the Incorporation of fix for the October, 2003 WBEM Security Bulletin to resolve known security defects in OpenSSL 0.9.6i. This version of HP WBEM Services has been upgraded to use OpenSSL 0.9.6k. For additional details, customers can refer to SSRT3622 "Potential Security Vulnerabilities in

HP WBEM Services for HP-UX".

Update applies to:

- System Admin managing UNIX patch updates.
- System Admin with a previous version of HP WBEM Services (e.g. A.01.05) that wants to resolve the OpenSSL security defects.

Product	Description	Platform	Version
B8465BA	WBEM Services	700,800	11.23
B8465BA	WBEM Services	800	11.0
B8465BA	WBEM Services	800	11.11
T1434BA	WBEM SDK	700,800	11.23
T1434BA	WBEM SDK	800	11.0
T1434BA	WBEM SDK	800	11.11



### WLM: product updated

HP-UX WLM 2.2 features several enhancements:

1. HP-UX WLM 2.2 automates the transfer of iCOD CPU licenses between nPars on both HP 9000 and HP Integrity servers running HP-UX. Based on Service Level Objectives, HP-UX WLM can turn off a CPU in one hard partition, and then activate an iCOD CPU in another hard partition. The total number of active CPUs on the system remains the same, so the customer gets better flexibility without incurring additional charges.
2. HP-UX WLM 2.2 improves its integration with HP Serviceguard and processor sets. HP-UX WLM 2.2 allows the creation of empty processor sets that automatically get whole CPUs assigned to it whenever the HP Serviceguard package is active.

3. There is a new, Java-based GUI with HP-UX WLM 2.2. It allows system administrators to configure and monitor HP-UX WLM's operation, either on the local system, or from a remote system.

This update applies to all customer who have implemented HP-UX WLM version 2.1 or prior that want to take advantage of these new features, and any customer who wants to do a new implementation of HP-UX WLM.

Product	Description	Platform	Version
T1302AA	WLM Toolkits	800	11.0
T1302AA	WLM Toolkits	800	11.11
T1302AA	WLM Toolkits	800	11.23



## Licensing information

Some applications require codeword certificate to unlock the software. The password is supplied with your software shipment or for some products you will receive a "password request form" enclosed with your shipment asking you to:

1. Generate it on line or request it on Software License Manager at the url:<http://licensing.hp.com/>
- or 2. View it on line thru Software Update Manager (SUM) web site at the url: <http://www.itrc.hp.com>
- or 3. Contact HP Licensing Services at the following address:

### Your HP US licensing contact:

Hewlett-Packard Company  
HP Licensing Services North America  
Phone: +1(650) 960-5111  
or (800) 538-1733  
Fax: +1(650) 960-5670  
or (800) 541-2633  
E-mail: [hplicense.na@hp.com](mailto:hplicense.na@hp.com)  
Business hours: Monday to Friday  
6:00am - 4:30pm PST

### Your HP European licensing contact:

Hewlett-Packard Ireland  
HP Licensing Services Ireland  
Phone: +353 (0)91 75 40 06  
Fax: +353 (0)91 70 1002  
E-mail: [codeword\\_europe@hp.com](mailto:codeword_europe@hp.com)  
Business hours: Monday to Friday  
8:30am - 5:30pm GMT

### Your HP Asia Pacific contact:

Hewlett-Packard Japan  
HP Licensing Services Japan  
Phone: 0120.42.1231 (Inside Japan)  
or 0426.48.9310 (Inside Japan)  
or +81.426.48.9312 (Outside Japan)  
Fax: 0 120.52.1231 (Inside Japan)  
or +81 426.39.4983 (Outside Japan)  
E-mail: [sw\\_codeword@hp.com](mailto:sw_codeword@hp.com)  
Business hours: Monday to Friday  
9:00am - 5:30pm GMT+9

For some other products it is recommended to:

1. Generate the password on line thru Web Ware web site at the url:[www.webware.hp.com](http://www.webware.hp.com)
- or 2. For additional password assistance you may contact one of the following license centers

### Hewlett-Packard Password Center for U.S.A:

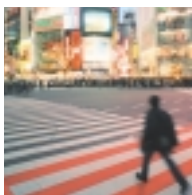
Phone: (801) 431-1597 or (800) 326-0411  
Fax: (801) 431-3654  
Hours of operation: 6:00 am to 6:00 pm MST  
[Americas\\_password@cnd.hp.com](mailto:Americas_password@cnd.hp.com)

### Hewlett-Packard Password Center for Europe/Africa:

Phone: (+31-55-543-4642)  
Fax: (+31-55-543-4645)  
Hours of operation: 9:00 to 18:00 CET  
[Europe\\_password@cnd.hp.com](mailto:Europe_password@cnd.hp.com)

### Hewlett-Packard Password Center for Asia Pacific:

Phone: (outside Japan) +81-3-3227-5672  
Phone: (within Japan) 03-3227-5264  
Fax: (+81-3-3227-5238)  
Hours of operation: 9:00 am to 5:00 pm JST  
[Asia\\_password@cnd.hp.com](mailto:Asia_password@cnd.hp.com)



## Newly released and updated products for March 2004

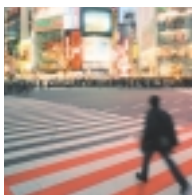
### Workstation platform

Base	Category	Description	Product Number	Version	Update/New
11.0	CASE	C SB LTU -Eng	B6449EB	E.06.95	Update
11.0	CASE	C SB LTU -Jpn	B6450EB	E.06.95	Update
11.0	CASE	C++ SB LTU -Eng	B6451EB	E.06.95	Update
11.0	CASE	C++ SB LTU -Jpn	B6452EB	E.06.95	Update
11.0	LANGUAGE	C/ANSI C Dev LTU	B3899BA	B.11.02.10	Update
11.0	LANGUAGE	Fortran90 LTU	B3907DB	B.11.01.80	Update
11.0	NETWORKING	GBE PCI 1000BT	A6825A	B.11.00.13	Update
11.0	NETWORKING	GBE PCI 1000SX	A6847A	B.11.00.13	Update
11.0	OTHER	GTK + Libraries	B6848BA	1.4.gm.46.5	Update
11.0	NETWORKING	GbE PCI 1000B-SX	A4926A	B.11.00.22	Update
11.0	NETWORKING	GbE PCI 1000B-T	A4929A	B.11.00.22	Update
11.0	NETWORKING	Gig Ethernet Lic	J1642AA	B.11.00.22	Update
11.0	OTHER	HP CIFS Client	B8724AA	A.01.09.01	Update
11.0	LANGUAGE	HP Pascal LTU	B3903BA	B.11.02.08	Update
11.0	LANGUAGE	HP aC++ LTU	B3911DB	C.03.55	Update
11.0	OTHER	Ignite-UX	B5725AA	B.5.2.124	Update
11.0	OTHER	LDAP-UX Integ	J4269AA	B.03.20	Update
11.0	OTHER	Mozilla	MOZILLA	1.4.0.01.02	Update
11.0	OTHER	Mozilla Source	MOZILLAsrc	1.4.0.01.02	Update
11.0	LANGUAGE	Nihongo Comp LTU	B3857BB	A.13.25.08	Update
11.0	LANGUAGE	Nihongo Dev LTU	B3855BB	A.13.25.08	Update
11.0	LANGUAGE	Nihongo RTS LTU	B3854BB	A.13.25.08	Update
11.0	LANGUAGE	OO Cobol Dev LTU	B2430EB	B.13.50.02	Update
11.0	LANGUAGE	OO Cobol RTS LTU	B2432EB	B.13.50.02	Update
11.0	NETWORKING	OTS/9000	J2160B	C.09.04	Update
11.0	OTHER	PRM Sw Libs	B7697BA	C.02.02	Update
11.0	OTHER	PRM sw/lic	B3835DA	C.02.02	Update
11.0	OTHER	SysMgmtAgent	B8339BA	B.03.00.05	Update
11.0	OTHER	WLM Monitor GUI	WLMUtilities	A.02.02	New
11.11	CASE	C SB LTU -Eng	B6449EB	E.06.95	Update



## Workstation platform

Base	Category	Description	Product Number	Version	Update/New
11.11	CASE	C SB LTU -Jpn	B6450EB	E.06.95	Update
11.11	CASE	C++ SB LTU -Eng	B6451EB	E.06.95	Update
11.11	CASE	C++ SB LTU -Jpn	B6452EB	E.06.95	Update
11.11	LANGUAGE	C/ANSI C Dev LTU	B3899BA	B.11.11.10	Update
11.11	LANGUAGE	Fortran90 LTU	B3907DB	B.11.11.80	Update
11.11	OTHER	GTK + Libraries	B6848BA	1.4.gm.46.5	Update
11.11	OTHER	HP CIFS Client	B8724AA	A.01.09.01	Update
11.11	LANGUAGE	HP Pascal LTU	B3903BA	B.11.11.08	Update
11.11	LANGUAGE	HP aC++ LTU	B3911DB	C.03.55	Update
11.11	OTHER	HW Par Provider	NPar	B.01.02.00.	New
11.11	OTHER	Ignite-UX	B5725AA	B.5.2.124	Update
11.11	OTHER	LDAP-UX Integ	J4269AA	B.03.20	Update
11.11	OTHER	Mozilla	MOZILLA	1.4.0.01.02	Update
11.11	OTHER	Mozilla Source	MOZILLAsrc	1.4.0.01.02	Update
11.11	LANGUAGE	OO Cobol Dev LTU	B2430EB	B.13.50.02	Update
11.11	LANGUAGE	OO Cobol RTS LTU	B2432EB	B.13.50.02	Update
11.11	NETWORKING	OTS/9000	J2160B	C.11.01	Update
11.11	OTHER	PRM Sw Libs	B7697BA	C.02.02	Update
11.11	OTHER	PRM sw/lic	B3835DA	C.02.02	Update
11.11	NETWORKING	SysMgmtAgent	B8339BA	B.03.00.05	Update
11.11	OTHER	WLM Monitor GUI	WLMUtilities	A.02.02	New
11.11	OTHER	iCOD SW	B9073BA	B.06.01	Update
11.23	NETWORKING	ACC/X.25 SW bnd	Z7344A	B.03.40.00	New
11.23	CASE	C SB LTU - Eng	B6449EB	E.08.05	Update
11.23	CASE	C SB LTU - Jpn	B6450EB	E.08.05	Update
11.23	CASE	C++ SB LTU - Eng	B6451EB	E.08.05	Update
11.23	CASE	C++ SB LTU - Jpn	B6452EB	E.08.05	Update
11.23	LANGUAGE	C/ANSI C Dev LTU	B3899BA	B.11.11.08	Update
11.23	OTHER	Device Manager	PeriphDev	B.11.23.01	Update
11.23	NETWORKING	FTAM/9000	J2163B	E.08.01	New
11.23	LANGUAGE	Fortran90 LTU	B3907DB	B.11.23.03	Update
11.23	OTHER	GTK + Libraries	B6848BA	1.4.gm.46.6	Update
11.23	OTHER	GraphicsTechCom	B6836AA	B.11.23.02.	Update
11.23	OTHER	HP CIFS Client	B8724AA	A.01.09.01	Update
11.23	OTHER	HP CIFS Server	B8725AA	A.01.10	Update
11.23	OTHER	HP MPI	B6060BA	B.11.23.03	Update
11.23	LANGUAGE	HP aC++ LTU	B3911DB	C.03.50	Update



## Workstation platform

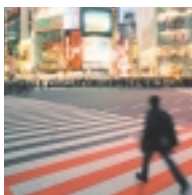
Base	Category	Description	Product Number	Version	Update/New
11.23	LANGUAGE	HP-UX Apache	hpuxwsApache	B.1.0.10.03	Update
11.23	OTHER	HP-UX STK	B4580AA	B.11.10	Update
11.23	OTHER	HP-UX STK Linux	B4580AL	B.11.10	New
11.23	OTHER	HP-UX STK Tru64	B4580AT	B.11.21	New
11.23	LANGUAGE	HP-UX Tomcat	hpuxwsTomcat	B.1.0.10.01	Update
11.23	OTHER	HW Par Provider	NPar	B.01.02.00.	Update
11.23	OTHER	IDS/9000	J5083AA	D.02.02.18	Update
11.23	OTHER	Ignite-UX	B5725AA	B.5.2.124	Update
11.23	OTHER	LDAP-UX Integ	J4269AA	B.03.20	Update
11.23	OTHER	Mozilla	MOZILLA	1.4.0.01.00	Update
11.23	OTHER	Mozilla Source	MOZILLAsrc	1.4.0.01.00	Update
11.23	OTHER	PRM Sw Libs	B7697BA	C.02.02	Update
11.23	OTHER	PRM sw/lic	B3835DA	C.02.02	Update
11.23	OTHER	ParMgr	ParMgr	B.11.23.02.	Update
11.23	OTHER	Pay Per Use	T2351AA	B.06.04	Update
11.23	NETWORKING	SCSI U320	scsiU320-00	B.11.23.02	Update
11.23	OTHER	SPB 11.23	SwPkgBuilder	A.01.00.06	Update
11.23	OTHER	SysMgmtAgent	B8339BA	B.03.00.05	Update
11.23	NETWORKING	TL pCI/HSC Adapt	FibrChanI-00	B.11.23.02	Update
11.23	NETWORKING	USB driver	USB-00	B.11.23.01	Update
11.23	OTHER	Vis Conf	B7580AA	B.11.23.20.	New
11.23	OTHER	WBEM SDK	T1434BA	A.01.05.08	Update
11.23	OTHER	WBEM Services	B8465BA	A.01.05.08	Update
11.23	OTHER	WLM Monitor GUI	WLMUtilities	A.02.02	New
11.23	OTHER	iCOD SW	B9073BA	B.06.01	Update
11.23	LANGUAGE	perl-non CPL	perl	D.5.8.0.B	Update





## Server Platform

Base	Category	Description	Product Number	Version	Update/New
11.0	CASE	C SB LTU -Eng	B6445EB	E.06.95	Update
11.0	CASE	C SB LTU -Jpn	B6446EB	E.06.95	Update
11.0	CASE	C++ SB LTU -Eng	B6447EB	E.06.95	Update
11.0	CASE	C++ SB LTU -Jpn	B6448EB	E.06.95	Update
11.0	LANGUAGE	C/ANSI C Dev LTU	B3901BA	B.11.02.10	Update
11.0	LANGUAGE	Fortran90 LTU	B3909DB	B.11.01.80	Update
11.0	NETWORKING	GBE PCI 1000BT	A6825A	B.11.00.13	Update
11.0	NETWORKING	GBE PCI 1000SX	A6847A	B.11.00.13	Update
11.0	OTHER	GTK + Libraries	B6848BA	1.4.gm.46.5	Update
11.0	NETWORKING	GbE EISAHSC D/R	A4925A	B.11.00.22	Update
11.0	NETWORKING	GbE HSC K-Class	A4924A	B.11.00.22	Update
11.0	NETWORKING	GbE PCI 1000B-SX	A4926A	B.11.00.22	Update
11.0	NETWORKING	GbE PCI 1000B-T	A4929A	B.11.00.22	Update
11.0	NETWORKING	Gig Ethernet Lic	J1642AA	B.11.00.22	Update
11.0	OTHER	HP CIFS Client	B8724AA	A.01.09.01	Update
11.0	LANGUAGE	HP Pascal LTU	B3905BA	B.11.02.08	Update
11.0	LANGUAGE	HP aC++ LTU	B3913DB	C.03.55	Update
11.0	OTHER	Ignite-UX	B5725AA	B.5.2.124	Update
11.0	OTHER	LDAP-UX Integ	J4269AA	B.03.20	Update
11.0	OTHER	Mozilla	MOZILLA	1.4.0.01.02	Update
11.0	OTHER	Mozilla Source	MOZILLAsrc	1.4.0.01.02	Update
11.0	LANGUAGE	Nihongo Comp LTU	B3861BB	A.13.25.08	Update
11.0	LANGUAGE	Nihongo Dev LTU	B3859BB	A.13.25.08	Update
11.0	LANGUAGE	Nihongo RTS LTU	B3863BB	A.13.25.08	Update
11.0	LANGUAGE	OO Cobol Dev LTU	B2433EB	B.13.50.02	Update
11.0	LANGUAGE	OO Cobol RTS LTU	B2435EB	B.13.50.02	Update
11.0	NETWORKING	OTS/9000	32070B	C.09.04	Update
11.0	OTHER	PRM Sw Libs	B7697BA	C.02.02	Update
11.0	OTHER	PRM sw/lic	B3835DA	C.02.02	Update
11.0	OTHER	SysMgmtAgent	B8339BA	B.03.00.05	Update
11.0	OTHER	WLM Monitor GUI	WLMUtilities	A.02.02	New
11.0	OTHER	WLM Toolkits	T1302AA	A.01.05	Update
11.0	OTHER	Workload Manager	B8843CA	A.02.02	Update
11.11	CASE	C SB LTU -Eng	B6445EB	E.06.95	Update
11.11	CASE	C SB LTU -Jpn	B6446EB	E.06.95	Update
11.11	CASE	C++ SB LTU -Eng	B6447EB	E.06.95	Update
11.11	CASE	C++ SB LTU -Jpn	B6448EB	E.06.95	Update



## Server Platform

Base	Category	Description	Product Number	Version	Update/New
11.11	LANGUAGE	C/ANSI C Dev LTU	B3901BA	B.11.11.10	Update
11.11	OTHER	ContCluster	T2346BA	A.04.01	Update
11.11	NETWORKING	Dual Gbe S/W	IEther-00	B.11.11.05	Update
11.11	LANGUAGE	Fortran90 LTU	B3909DB	B.11.11.80	Update
11.11	OTHER	GTK + Libraries	B6848BA	1.4.gm.46.5	Update
11.11	OTHER	HP CIFS Client	B8724AA	A.01.09.01	Update
11.11	LANGUAGE	HP Pascal LTU	B3905BA	B.11.11.08	Update
11.11	LANGUAGE	HP aC++ LTU	B3913DB	C.03.55	Update
11.11	OTHER	HW Par Provider	NPar	B.01.02.00.	New
11.11	OTHER	Ignite-UX	B5725AA	B.5.2.124	Update
11.11	OTHER	LDAP-UX Integ	J4269AA	B.03.20	Update
11.11	OTHER	MetroClstr XP256	B8109BA	A.04.21	Update
11.11	OTHER	Mozilla	MOZILLA	1.4.0.01.02	Update
11.11	OTHER	Mozilla Source	MOZILLAsrc	1.4.0.01.02	Update
11.11	LANGUAGE	OO Cobol Dev LTU	B2433EB	B.13.50.02	Update
11.11	LANGUAGE	OO Cobol RTS LTU	B2435EB	B.13.50.02	Update
11.11	NETWORKING	OTS/9000	32070B	C.11.01	Update
11.11	OTHER	PRM Sw Libs	B7697BA	C.02.02	Update
11.11	OTHER	PRM sw/lic	B3835DA	C.02.02	Update
11.11	NETWORKING	SysMgmtAgent	B8339BA	B.03.00.05	Update
11.11	OTHER	WLM Monitor GUI	WLMUtilities	A.02.02	New
11.11	OTHER	WLM Toolkits	T1302AA	A.01.05	Update
11.11	OTHER	Workload Manager	B8843CA	A.02.02	Update
11.11	OTHER	iCOD SW	B9073BA	B.06.01	Update
11.23	NETWORKING	ACC/X.25 SW bnd	Z7344A	B.03.40.00	New
11.23	CASE	C SB LTU - Jpn	B6446EB	E.08.05	Update
11.23	CASE	C SB LTU- Eng	B6445EB	E.08.05	Update
11.23	CASE	C++ SB LTU - Eng	B6447EB	E.08.05	Update
11.23	CASE	C++ SB LTU - Jpn	B6448EB	E.08.05	Update
11.23	LANGUAGE	C/ANSI C Dev LTU	B3901BA	C.05.55	Update
11.23	OTHER	ContCluster	T2346BA	A.04.01	New
11.23	OTHER	Device Manager	PeriphDev	B.11.23.01	Update
11.23	NETWORKING	Dual Gbe S/W	IEther-00	B.11.23.02	Update
11.23	NETWORKING	FCD PCI-X Adaptr	FibrChanI-01	B.11.23.01	New
11.23	NETWORKING	FTAM/9000	B1033B	E.08.01	New
11.23	LANGUAGE	Fortran90 LTU	B3909DB	B.11.23.03	Update
11.23	OTHER	GTK + Libraries	B6848BA	1.4.gm.46.6	Update
11.23	NETWORKING	GbE PCI 1000B-T	GigEther-01	B.11.23.03	Update



## Server Platform

Base	Category	Description	Product Number	Version	Update/New
11.23	OTHER	HP CIFS Client	B8724AA	A.01.09.01	Update
11.23	OTHER	HP CIFS Server	B8725AA	A.01.10	Update
11.23	OTHER	HP MPI	B6060BA	B.11.23.03	Update
11.23	LANGUAGE	HP aC++ LTU	B3913DB	C.05.55	Update
11.23	LANGUAGE	HP-UX Apache	hpuxwsApache	B.1.0.10.03	Update
11.23	OTHER	HP-UX STK	B4580AA	B.11.10	Update
11.23	OTHER	HP-UX STK Linux	B4580AL	B.11.10	New
11.23	OTHER	HP-UX STK Tru64	B4580AT	B.11.21	New
11.23	LANGUAGE	HP-UX Tomcat	hpuxwsTomcat	B.1.0.10.01	Update
11.23	OTHER	HW Par Provider	NPar	B.01.02.00.	Update
11.23	OTHER	IDS/9000	J5083AA	D.02.02.18	Update
11.23	OTHER	Ignite-UX	B5725AA	B.5.2.124	Update
11.23	OTHER	LDAP-UX Integ	J4269AA	B.03.20	Update
11.23	OTHER	MC DR Enabler	MCDREnabler	A.04.20	New
11.23	OTHER	MC/SerGd NFS Kit	B5140BA	A.11.23.02	Update
11.23	OTHER	MetroClstr XP256	B8109BA	A.04.21	New
11.23	OTHER	Mozilla	MOZILLA	1.4.0.01.00	Update
11.23	OTHER	Mozilla Source	MOZILLAsrc	1.4.0.01.00	Update
11.23	OTHER	PRM Sw Libs	B7697BA	C.02.02	Update
11.23	OTHER	PRM sw/lic	B3835DA	C.02.02	Update
11.23	OTHER	ParMgr	ParMgr	B.11.23.02.	Update
11.23	OTHER	Pay Per Use	T2351AA	B.06.04	Update
11.23	NETWORKING	RAID160 software	RAID-01	B.11.23.01	New
11.23	NETWORKING	SCSI U320	scsiU320-00	B.11.23.02	Update
11.23	OTHER	SPB 11.23	SwPkgBuilder	A.01.00.06	Update
11.23	OTHER	SysMgmtAgent	B8339BA	B.03.00.05	Update
11.23	NETWORKING	TL pCI/HSC Adapt	FibrChanI-00	B.11.23.02	Update
11.23	NETWORKING	USB driver	USB-00	B.11.23.01	Update
11.23	OTHER	WBEM SDK	T1434BA	A.01.05.08	Update
11.23	OTHER	WBEM Services	B8465BA	A.01.05.08	Update
11.23	OTHER	WLM Monitor GUI	WLMUtilities	A.02.02	New
11.23	OTHER	WLM Toolkits	T1302AA	A.01.05	Update
11.23	OTHER	Workload Manager	B8843CA	A.02.02	Update
11.23	OTHER	iCOD SW	B9073BA	B.06.01	Update
11.23	LANGUAGE	perl-non CPL	perl	D.5.8.0.B	Update





**HP-UX 11.0**  
**Operating System**



# HP-UX 11.0

## Operating System

### HP-UX 11.0

### Install/Update/Recovery media for March 2004

This article describes the (Ignite-UX) install tool and options for the HP-UX 11.0 Install/Update/Recovery media for the March 2004 release. The update of this media does not change the HP-UX 11.0 Core software. Please review the following information about the HP-UX 11.0 Install/Update/Recovery media changes.

#### Discontinuance Announcement:

HP will offer the final Install/Update/Recovery refresh for HP-UX 11.0 (B.11.00) in March 2004. This is in alignment with the end of sales of HP-UX 11.0 Servers on March 31, 2004 and HP-UX 11.0 Workstations on September 30, 2004.

#### Overview

- The Hardware Enablement patch bundle, HWE1100, includes patches required for PA8700 systems. The updated install kernels also support the installation of the HP-UX 11.0 Core OS software to these systems using the latest I/O adapters supported with boot devices. The HWE1100 bundle is automatically selected for all configurations (using HP-UX 11.0 Install/Update/Recovery media from June 2001 or later).

- The HP-UX 11.0 Install/Update/Recovery media provides updated install kernels that work with install utility and recovery commands to support Fibre Channel boot devices in addition to the SCSI peripherals. (Note that HP9000 servers and workstations may require updated system firmware to support newer I/O cards and peripherals as boot devices.)
- Software Selection menu now supports the choice of mass-storage and networking I/O driver products for installation with the Basic Configuration choices and other selected software.
  1. Mass-Storage I/O driver products support PCI Tachyon TL/TS/XL2 Fibre Channel cards (A5158A, A6684A, A6685A, A6795A) and the PCI RAID card (A5856A) on several HP9000 systems.
  2. Networking I/O driver products support the 100BT, Gigabit Ethernet, FDDI, HyperFabric, and RS-232 Mux adapters on systems with GSC/HSC and PCI interfaces.
  3. The section below provides a list of selectable drivers that are



available on the current release of the 11.0 Install/Update/Recovery media.

- The Ignite-UX install tool reduces the complexity and number of reboots required for the installation of HP-UX 11.0 Core OS software and for selected patch bundles and/or add-on products.
  1. A single-pass process to cold install HP-UX that requires only one reboot (a second reboot is needed if workstation firmware needs upgrading).
  2. The install utility also enables the selection of network drivers, diagnostics and HP-UX patch bundles from the Support Plus CD, and graphics bundles from the Core OS Options CD for Technical Computing systems during the initial cold install process.
  3. The installation starts with software from the HP-UX 11.0 Install/Update/Recovery media, the tool then prompts for the next CD based on other selected software and configuration options.
  4. System reboot is deferred until the selected software from each CD is installed and configured.
- Ignite-UX now supports configuring "A5856A RAID 4Si" cards on 64-bit OS capable systems.
  1. From the "welcome" Ignite-UX screen if you press the "Advanced Options" button, you should see a button "Configure A5856A RAID 4Si cards" on systems that have this card installed.
  2. Pressing this button will run the "irm" utility to configure the card.
  3. If you choose to install HP-UX to a disk connected to this card, be sure to also install the A5856A (I20 RAID) driver software that supports it during the installation.



## The HP-UX 11.0 Install/Update/Recovery media for March 2004 includes the following I/O drivers:

A3495A	B.11.00.X	HP-PB 100BT LAN/9000
A3722A	B.11.00.X	HSC FDDI/9000 Driver for K,T Class
A3723A	B.11.00.X	HSC FDDI/9000 Driver for B,C,D,J Class
A3739B	B.11.00.X	PCI FDDI/9000 Media
A4919A	B.11.00.X	HyperFabric 9000/[78]00
A4920A	B.11.00.X	HyperFabric 9000/800
A4921A	B.11.00.X	HyperFabric 9000/800
A4924A	B.11.00.X	1000Base-SX HSC Gigabit Ethernet Driver
A4926A	B.11.00.X	1000Base-SX PCI Gigabit Ethernet Driver
A4929A	B.11.00.X	1000Base-T PCI Gigabit Ethernet Driver
A5158A	B.11.00.X	HP PCI/HSC Tachyon TL Fibre Channel
A6795A	B.11.00.X	PCI Tachyon TL/TS/XL2 Fibre Channel
A5230A	B.11.00.X	100BT/9000 PCI
A5506A	B.11.00.X	PCI 4 PORT 100BASE-T/9000
A5506B	B.11.00.X	PCI 4 PORT 100BASE-T/9000
A5783A	B.11.00.X	PCI Token Ring
A5856A	B.11.00.X	I2O RAID
A6092A	B.11.00.X	HyperFabric 9000/[78]00
A6684A	B.11.00.X	HSC Fibre Channel
A6685A	B.11.00.X	HSC Fibre Channel
A6748A	B.11.00.X	PCI RS-232 MUX Software
A6825A	B.11.00.X	HP PCI Gigabit Ethernet Driver
A6847A	B.11.00.X	HP PCI Gigabit Ethernet Driver
B5509BA	B.11.00.X	100BT/9000 PCI
J1642AA	B.11.00.X	HP PCI/HSC Gigabit Ethernet Driver
J2157B	B.11.00.X	Server FDDI/9000
J2166B	B.11.00.X	Token Ring/9000 HPPB Series 800
J3514A	B.11.00.X	100BT/9000 GSC for K and T Series
J3515A	B.11.00.X	100BT/9000 GSC for B, C, D, and J Series
J3516A	B.11.00.X	100BT/9000 GSC for B, C, D, and J Series



**HP-UX 11i v2**  
**Operating Environment**

# HP-UX 11i v2

## Operating Environment Update Release

### What's New in the HP-UX 11i v2 March 2004 Release?

HP is pleased to announce the latest release of HP-UX 11i v2 Operating Environment Update. The March 2004 HP-UX 11i v2 is available to support customers by request only. Please use the following information to decide whether this release is right for you.

If you need detailed information on the changes in the March 2004 HP-UX 11i v2 Operating Environment, you can visit

<http://docs.hp.com/hpux/os/11iv2/index.html> and click on the "Release Notes" link to go to the HP-UX 11i v2 March 2004 Release Notes.

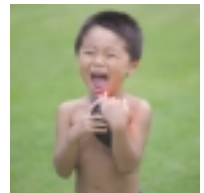
#### **Operating Environment (OE) Release Strategy**

As communicated in December 2003, the HP-UX OE media will be updated twice a year starting in March 2004. This does not affect the application releases, which will still remain on a quarterly cycle. Because of the timing, the Application media and software depot may contain versions of products which are more recent than those contained in the OE media. This is because OE

integration testing uses the most recent versions of products available at the time of testing. Versions of software products available after the integration testing must wait until the next OE integration testing cycle to be included in the OE media.

For March 2004, the HP-UX 11i v2 (B.11.23) OE media is updated. NB: in June 2004, the HP-UX 11i v1 (B.11.11) OE media will be updated. The Quality Packs and HWE bundles will also be updated on this cycle with the appropriate OE change. HP will communicate information on the plans for future releases through our online communication at

<http://www.software.hp.com/RELEASES-MEDIA/>.



## Updates to the HP-UX 11i v2 in March 2004

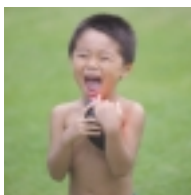
### Workstation- and Server-Specific Information

- Hardware Enablement Program added to support new systems, processors, and I/O adapters. Support for optical devices updated.
- Networking and Mass Storage Drivers:
  - FibrChanl-01 driver bundle now supports the A6826A card.
  - FibrChanl-01 and GigEther-01 driver bundles now support the A9782A and A9784A cards.
  - GigEther-01 driver bundle now supports the A7109A card.
  - lEther-00 driver bundle now supports the A7011A and A7012A cards.
  - RAID-01 driver bundle now supports the A9890A card.
  - The scsiU320-00 driver bundle is added to pre-enable cards to be released in the future.
- On Demand Solutions:
  - Instant Capacity on Demand (iCOD) updated to version 6.01 to incorporate defect fixes.
  - Pay Per Use (PPU) updated to version 6.04 to incorporate defect fixes.
- Xserver updated to version

B.11.23.01 with support for multiple graphics cards.

### General System Administration

- Diagnostics (Online):
  - EMS Hardware Monitor has added to monitor the operation of the iSCSI Software Initiator.
  - IPMI Event Viewer Web Interface Tool added.
- HP Partitioning:
  - HP Process Resource Manager updated to version C.02.02 with support of a version option, support of SSL encryption of login/password data, more consistent syslog messaging, and other changes.
  - HP-UX Workload Manager updated to version A.02.02 with a new GUI that allows local and remote management of WLM systems; automatic resizing of node partitions (nPars) that use iCOD software; support for more WLM configuration options by the Configuration Wizard; and other changes.
  - HP-UX Workload Manager Toolkits updated to version A.01.05. Utilities now use /opt/perl/bin/perl; ApacheTK



begins supporting Apache 2.x; the `cntl_smooth` configuration file keyword now offered; `utilitydc` modified; and other changes.

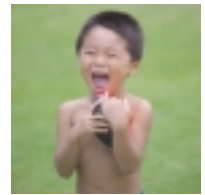
- The nPartition Provider updated to version B.01.02.00.02 to incorporate several minor defect fixes to improve the overall quality of the product.
- Partition Manager updated to version B.11.23.02.00.02 to incorporate several minor defect fixes, as well as changes to functionality, including checking of the complex for configuration problems and validation of SSL certificates sent from the CIM server.
- HP Web Based Enterprise Management Services for HP-UX updated version A.01.05.08 to use OpenSSL 0.9.6k.
- Ignite-UX updated to version B.5.2 with several enhancements, including updating the `make_*_recovery` tools.
- MC/ServiceGuard NFS Toolkit updated to version A.11.23.02 to deliver the File Lock Migration enhancement.
- The Quality Pack Patch Bundle now delivered on the Core OE media as well as the Web.
- Servicecontrol Manager updated to version 3.05 to incorporate defect fixes.
- Software Distributor updated to incorporate defect fixes.
- Software Package Builder updated to version A.01.04 to allow the setting of corequisites and prerequisites attributes using the “OR” relationship. SPB is also now able to detect ambiguous objects.
- Update-UX updated to provide the flexibility to “deselect” bundles through an alternate to the default selections file. Update-UX will also create two backup kernel configurations from the update process.

### Disk and File Management

- HP Common Internet File System Client updated to version A.01.09.01 to incorporate a defect fix.
- HP CIFS Server 2.2g updated to version A.01.10 to incorporate fixes and minor enhancements developed since Samba version 2.2.5.
- VERITAS File System 3.5 (HP OnlineJFS 3.5) now enables creation of file systems of up to 8TB.

### Internet and Networking

- HP-UX Apache-based Web Server updated to version v.1.0.10.02 as primarily a security and bug fix release which addresses vulnerabilities and problems.
- HP-UX Tomcat-based Servlet Engine updated to version 1.0.10.02 to correspond with the



HP-UX Apache-based Web Server v.1.0.10.01 with Apache 2.0.48. Upgraded mod\_jk to v1.2.5.

- LAN Commands:
  - The lanadmin command's hard link, /usr/bin/landiag, deprecated.
  - The file /etc/lanscan deprecated.
  - The file /etc/linkloop deprecated.
- Mozilla updated to version 1.4.00.01 with full Japanese localization as well as other defect fixes and enhancements. Netscape is no longer included, but can be downloaded at <http://www.hp.com/go/netscape>.

### Security

- HP-UX Host Intrusion Detection System v2.2 updated to include a defect fix for the detection of logins.

### Commands and System Calls

- Topics in this chapter are unchanged for March 2004.

### Libraries and Programming

- GTK+ Libraries updated to version 1.4.gm.46.4 to support changes to the Operating Environments. No new functionality added.
- HP Message Passing Interface (MPI) updated to version 2.0 with full MPI-2 Standard functionality and other enhancements.
- Perl updated to version 5.8.0 build 806 with several bug fixes and other improvements.

### Internationalization

- ATOK 8 Japanese input method now deprecated.

### Other Functionality

- HP-UX OpenGL Run Time Environment and Developer's Kit updated to version B.11.23.02.01 to incorporate defect fixes.

### Additional Materials

#### Internet Express

Internet Express is a collection of Open Source Web, Internet and security services, which have been tested and qualified on HP-UX. Internet Express is an easily installed, configured and administered product. The open source components are configured through the web-based Webmin administration utility, which is shipped as part of the HP-UX Apache offering.



## HP-UX Hardware Enablement (HWEEnable11i)

The Hardware Enablement (HWE) Program updates the content in the HWEEnable11i Patch Bundle, the HP-UX Support Tools (Online Diagnostics) and other HP-UX software to support hardware on HP systems with an HP-UX 11i v2 Operating Environment (OE). The HWEEnable11i bundle and the HP-UX Support Tools provide support for new and future systems, I/O adapters, and mass-storage products. This HP-UX software is labeled as required, ignited on new systems in HP manufacturing, and automatically loaded as part of any 11i v2 OE update.

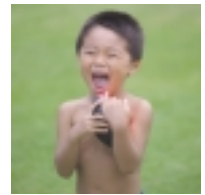
In addition to the HP-UX 11i v2 OE media, the HWEEnable11i bundle is available at the IT Resource Center (<http://itrc.hp.com>) and at HP Software Depot (<http://software.hp.com>) under “enhancements releases and patch bundles” link.

For information on firmware requirements, see the HP-UX 11i Version 2 Installation and Update Guide, reference 5990-6728, available in your media kit, on the Instant Information DVD, and at

<http://docs.hp.com/hpux/os/11iv2/index.html>

### Summary of Change

- Added diagnostics support for dual-core processors in following servers:
  - HP Integrity 16-way Superdome Enterprise Server (SD16A)
  - HP Integrity 32-way Superdome Enterprise Server (SD32A)
  - HP Integrity 64-way Superdome Enterprise Server (SD64A)
  - HP Integrity rx8620-32 Server (16 socket 32-way with multiple partitions)
  - HP Integrity rx7620-16 Server (8 socket 16-way with dual partitions)
  - HP Integrity rx4640-8 Server (4 socket 8-way)
- Added support for new systems:
  - HP Integrity cx2600 Server (2 socket Carrier-grade system)
- Added support for following new I/O adapters:
  - A6826A PCI-X Dual-Port 2Gb/1Gb FC Adapter
  - A7011A PCI-X 1000Base-SX Dual Port Adapter
  - A7012A PCI-X 1000Base-T Dual Port Adapter
  - A9782A PCI-X 2Gb FC and 1000Base-SX [Fiber] Combo Card



- A9784A PCI-X 2Gb FC and 1000Base-T [Copper] Combo Card
- A9890A PCI-X 2-Channel SA6402 RAID320 Adapter
- AB352A Core 1000Base-T Dual-Port card for the rx4640 server
- Updated install kernels for HP-UX boot support for above I/O adapters.
- Updated support for new DVD Writer optical devices for HP Integrity Servers:

*Supported DVD Writer Optical Devices for Servers*

Product Number	Product Description	Platforms
AB348A	DVD+RW Drive, Slim	rx2600
AB349A	DVD+RW Drive, Slim	rx4640
AB350A	DVD+RW Drive, Slim	rx1600
AB351A	DVD+RW Drive	rx8620, rx7620

- Updated support for new DVD Writer optical devices for HP Workstations:

*Supported DVD Writer Optical Devices for Workstations*

Product Number	Product Description	Platforms
AB616A	DVD+RW Drive, Slim	zx6000
AB615A	DVD+RW Drive	zx2000

**Impact**

New systems, processors, and I/O adapters are now supported. Support for new DVD Writer optical devices has been updated.



## Products removal, discontinuance and replacement plan

### **Removal of the Netscape browser from media**

The Netscape browser is removed from the HP-UX 11i v2 OE media and replaced by the Mozilla Application Suite.





**HP-UX 11.0**  
**Support Plus**

# HP-UX 11.0

## Support Plus

### Latest release of HP-UX Support Plus

HP is pleased to announce the latest release of HP-UX Support Plus. These tested bundles include patches that fix HP-UX defects, enable new hardware, and provide diagnostic tools. Support Plus is available to customers by request only. Please use the following information to decide whether this release is right for you.

#### Special Note

**This March 2004 release is the final offering of Quality Pack (QPK) and Hardware Enablement (HWE) bundles for HP-UX 11.0 (B.11.00). This is in alignment with the discontinuance strategy of HP-UX 11.0.**

While HP will no longer refresh these bundles after the March 2004 version, you can still obtain them from the Support Plus web page at: [http://software.hp.com/SUPPORT\\_PLUS](http://software.hp.com/SUPPORT_PLUS). Also, Hewlett-Packard will continue to provide new and recommended HP-UX 11.0 patches, as well as updated information about the patches in the March 2004 bundles, at the ITRC Resource

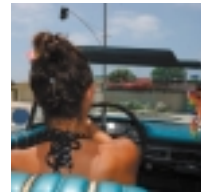
Center at the URL: <http://itrc.hp.com>.

#### New in Support Plus!

HP ISEE is a single, common remote support solution that lets you manage diverse environments, spanning from simple environments to complex mission critical environments. By providing a single remote support solution for multiple operating systems and devices, ISEE can help eliminate the need for you to manage multiple support tools across your IT environment, thus reducing complexity and support cost.

HP ISEE uses continuous hardware event monitoring and automated notification, to proactively identify and prevent potential critical problems. Through remote diagnostic scripts and vital configuration information collected, HP ISEE enables fast restoration of supported systems, storage and network devices.

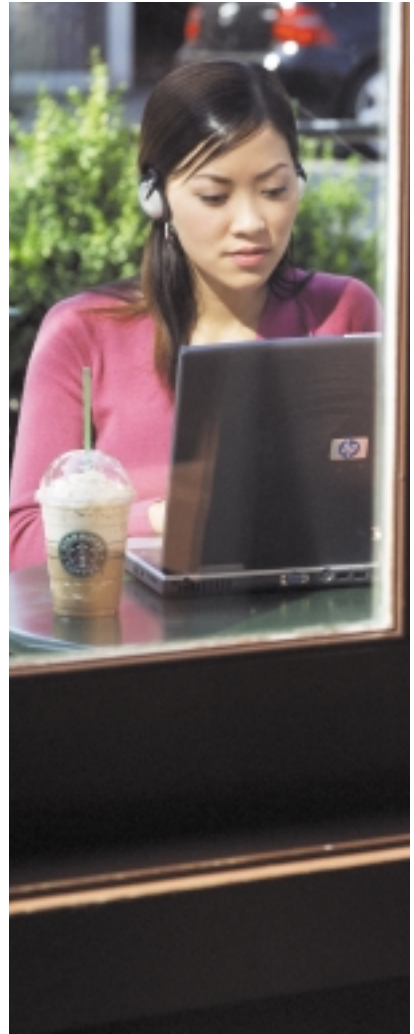
Start using ISEE today, so that you can reap the benefits of HP's next generation remote support solution.

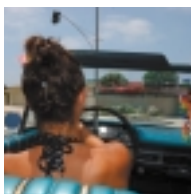


Don't let your HP-UX systems go without remote monitoring support. HP ISEE A.03.00 is available on the March release of the Support Plus media for installation as the bundle ISEEPlatform within the HPUXAuxTools directory. ISEE can also be downloaded from:

[www.software.hp.com](http://www.software.hp.com) by selecting Instant Support Enterprise Edition under the "internet ready and networking" section or under the "Featured Products" section. For more information on ISEE, visit [http://www.hp.com/hps/hardware/hw\\_enterprise.html](http://www.hp.com/hps/hardware/hw_enterprise.html)

If you have HP mission critical or select network support services, contact your Hewlett-Packard account support team to determine the appropriate remote support solution for your environment.

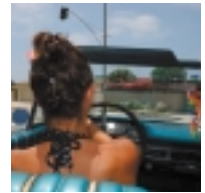




## HP-UX 11.0 Support Plus CD-ROM content in March 04

### HP-UX 11.0 Support Plus CD-ROM content in the March 04 release

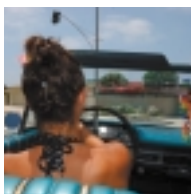
<b>If your hardware platform is an</b>	<b>And you want to</b>	<b>You should install</b>	<b>Revision date</b>
HP-UX Workstation or Server	Use the diagnostic tools	OnlineDiag bundle from the depot /cdrom/DIAGNOSTICS/B.11.00	March 2004
HP-UX Server	Use the Instant Support Enterprise Edition tools (requires an HP support contract)	ISEEPlatform (A.03.00.029) bundle from the depot /cdrom/HPUXAuxTools	March 2004
HP-UX Server	Prepare your server to use iCOD (Instant Capacity on Demand) functionality	ICOD-purchase (B9073AA bundle) from /cdrom/DIAGNOSTICS/B.11.00	September 2002
HP-UX Workstation or Server	Enable systems and supported hardware products (including I/O adapters and devices)	Hardware Enablement Bundle from /cdrom/HWE1100	March 2004
HP-UX Workstation or Server	Bring all core and graphics software to the currently supported patch level and install critical patches for core, add-on I/O and networking drivers	Quality Pack Bundle from /cdrom/QPK1100	March 2004



## HP-UX 11.i Support Plus CD-ROM content

**HP-UX 11i v1 Support Plus CD-ROM content:**  
**This information is communicated to you as a reminder only. You will find the HP-UX 11i v1 Support Plus media content in the December 03 release**

If your hardware platform is an	And you want to	You should install	Revision date
HP-UX Workstation or Server	Use the latest diagnostic tools	OnlineDiag bundle from the depot /cdrom/DIAGNOSTICS/B.11.11	December 2003
HP-UX Server	Use the latest Instant Support Enterprise Edition tools (requires an HP support contract)	ISEEPlatform (A.03.00.029) bundle from the depot /cdrom/HPUXAuxTools	December 2003
HP-UX Workstation or Server	Prepare your server to use iCOD (Instant Capacity on Demand) functionality	ICOD-purchase (B9073AA bundle) from /cdrom/DIAGNOSTICS/B.11.11	December 2003
HP-UX Workstation or Server	Prepare your server to use iCOD (Instant Capacity on Demand) functionality	ICOD-utility (T1322AA bundle) from /cdrom/DIAGNOSTICS/B.11.11	December 2003
HP-UX Workstation or Server	Install patches for HP-UX 11i v1 which are required to install and update the OS	Required 11i v1 Patch Bundle from /cdrom/BUNDLE11i	June 2003
HP-UX Workstation or HP-UX Server	Enable new systems and supported hardware products (e.g. I/O adapters and devices)	Hardware Enablement Bundle: from /cdrom/HWEnable11i	December 2003
HP-UX Workstation or Server	Update HP-UX application software (e.g. HP MC/ServiceGuard product)	Gold Apps Bundle (GOLDAPPS11i) from /cdrom/GOLDQPK11i (Updated in June and December)	December 2003
HP-UX Workstation or Server	Update HP-UX core software	Gold Base Bundle (GOLDBASE11i) from /cdrom/GOLDQPK11i (Updated in June and December)	December 2003



## Requesting HP-UX Support Plus

If you are interested in receiving this release of HP-UX Support Plus on CD-ROM, please follow the instructions detailed on the first page of this letter.

Support Plus bundles are available individually from HP Software Depot at the url: <http://software.hp.com>. Click on "enhancement releases". Then look for the bundles in the list. There are informational web pages for each bundle. You must register and then may download any of them.

You can also order CD media through the HP Software Update Manager. Follow the links from the IT Resource Center. The url is:

<http://itrc.hp.com> and for Europe make sure you reach the European

website. Click on "more..." in the "maintenance / support" area. Then select "standard patch bundles" in the "patching" area. Then select "Obtain Support Plus from Software Update Manager."

You may also register for any of the following Software Update Manager service features:

- notification of the availability of new software update products related to your support agreement.
- information about changes to the Software Update Manager.
- **set your preferences for e-mail and frequency of reporting.**
- view software information articles on-line in the Software Update Manager.







© Copyright 2004 Hewlett-Packard Development Company, L.P.  
The information contained herein is subject to change without notice. The only warranties for HP products and services are set forth in the express warranty statements accompanying such products and services. Nothing herein should be construed as constituting an additional warranty. HP shall not be liable for technical or editorial errors or omissions contained herein.  
Printed in Europe March 2004

