



Solutions - how-to guides

» Small & Medium Business

- » Products
- » Solutions
 - » How-to guides
 - » **Managing Windows environments**
- » Support & Drivers
- » Services

Buying options

- » [Shop online at HP](#)
- » [Other ways to buy](#)
- » [Business to business](#)

Or call 800-888-0262

- » [Special offers](#)
- » [News & Events](#)
- » [Request catalog & news](#)

Managing small & medium Windows environments



Overview

HP Systems Insight Manager is HP's new management application that assists you in managing all HP servers and system hardware within your IT environment. HP Systems Insight Manager brings enterprise-level benefits to small IT environments. Regardless of the size or complexity of your organization, HP Systems Insight Manager can help you be more efficient and proactive in identifying, diagnosing, and fixing potential issues for all of your HP hardware. For example, you can receive notification of drive issues that enable you to replace the drive under warranty before it fails.

HP Systems Insight Manager ships with all HP ProLiant 300, 500, and 700 series servers and it can be implemented quickly. Its default management capabilities enable you to auto-discover systems, monitor system health, deploy system software and firmware updates, and setup paging or e-mail notifications for pro-active notification of potential problems. HP Systems Insight Manager also includes a set of fully enabled licenses for value-added options such as patch management and performance management, which allow you to evaluate these additional capabilities. If you are responsible for managing printers, storage, and clients in addition to servers, HP Systems Insight Manager provides additional value through consolidated access to specialized tools for managing these systems.

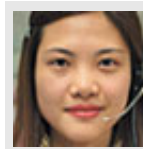
This guide explains the role HP Systems Insight Manager plays in managing your IT environment and describes some of the advanced capabilities of HP Systems Insight Manager that you can implement based on the needs of your organization. The sections of the guide include:

- » [HP Systems Insight Manager in a range of IT environments](#)
- » [HP Systems Insight Manager basics](#)
- » [Why migrate from previous versions of Insight Manager?](#)
- » [Managing your infrastructure with Insight Manager](#)
- » [Additional HP Systems Insight Manager capabilities](#)

Note: Download a PDF version of this guide at right for a printable version of this guide that also includes a complete tutorial on how to install and configure HP Systems Insight Manager.

5 things that you should know about HP Systems Insight Manager

- It can be installed and configured on a Windows XP desktop in less than one hour.
- The GUI is intuitive and easy to learn (no extensive training needed).
- It provides fault and inventory management for a handful of devices up to thousands of devices.
- It includes free licenses for the ProLiant Essentials Performance Management Pack and other ProLiant Essentials value-added plug-ins.
- It can manage desktops, printers, and networking equipment by interfacing with management tools for those devices.



Contact HP

M-F 9-8 EST

[Chat live online](#)

[1-800-888-0262](#)

Managing Windows environments

- » **Overview**
- » [HP Systems Insight Manager in a range of IT environments](#)
- » [HP Systems Insight Manager basics](#)
- » [Why migrate from previous versions of Insight Manager?](#)
- » [Managing your infrastructure with Insight Manager](#)
- » [Additional HP Systems Insight Manager capabilities](#)
- » [Email this page](#)

Learn more

- » [Download a PDF version of this guide \(686KB, PDF\)](#)
- » [Servers and storage expertise center](#)

» [HP Systems Insight Manager in a range of IT environments](#)

Email this page

Send this information to a friend/colleague

Your name:

Your friend's email address:

» [HP's Privacy policy](#) Email will not be used for additional marketing

Comments:

To download the latest Adobe Reader, please go to the Adobe website at <http://www.adobe.com>.

 [Printable version](#)

[Privacy statement](#)

[Using this site means you accept its terms](#)

[Feedback to SMB webmaster](#)

© 2006 Hewlett-Packard Development Company, L.P.



Solutions - how-to guides

» Small & Medium Business

- » Products
- » Solutions
 - » How-to guides
 - » **Managing Windows environments**
- » Support & Drivers
- » Services

Buying options

- » Shop online at HP
- » Other ways to buy
- » Business to business

Or call 800-888-0262

- » Special offers
- » News & Events
- » Request catalog & news

Managing small & medium Windows environments



HP Systems Insight Manager in a range of IT environments

By default, HP Systems Insight manager provides fault, inventory, and configuration management of all your HP servers. Even if you have little or no experience using management tools, HP Systems Insight Manager can immediately help you become more proactive in detecting and solving system problems. HP Systems Insight Manager provides tangible benefits in a wide range of IT environments. For example:

- Sam is an **IT administrator in a small firm of lawyers**. He manages 5 servers, 50 desktops, 10 printers, and miscellaneous networking devices. He does not currently use management tools. If the lawyers have a problem with their systems, they quickly pick up the phone and call him. Sam doesn't think that his firm will invest in management tools and he is not sure that he has the time to learn the software. If Sam used HP Systems Insight Manager, he would receive an email or pager notification of potential problems with server components such as drives, CPU, and memory, enabling him to fix issues before the lawyers noticed and phoned him. Answering fewer crisis phone calls could save Sam much more than the time he would spend learning HP Systems Insight Manager. HP Systems Insight Manager would also help Sam to quickly locate information on his systems such as serial numbers, model numbers, and OS levels as well as allow him to centrally track and update server BIOS, firmware, and agents. With the addition of the Vulnerability and Patch Management Pack, he can even scan systems for security vulnerabilities, update OS and application patches, and ensure that patches remain installed on the systems.
- Colin is an **IT administrator in a local community college**. He manages over 10 servers, 250 desktops, several printers, and Procurve network switches. He has spent a lot of time configuring Insight Manager 7 for his IT environment, and he appreciates its remote management capabilities. He knows about HP Systems Insight Manager, but he doesn't know if the benefits outweigh the effort to switch from Insight Manager 7. Colin uses HP Client Manager to manage the desktops so he will be pleased to know that he can launch HP Client Manager in context within the HP Systems Insight Manager user interface. He can also get detailed information on his Procurve switches. In parallel, Colin has been evaluating vulnerability scanners and patch management software but he is reluctant to learn new tools to manage his environment. The introduction of the new ProLiant Essentials Vulnerability and Patch Management Pack that is integrated into HP Systems Insight Manager should convince Colin to migrate. When Colin decides to upgrade from Insight Manager 7, he will find it quick and easy to migrate to HP Systems Insight Manager.



Contact HP

M-F 9-8 EST

[Chat live online](#)
[1-800-888-0262](#)

Managing Windows environments

- » Overview
- » **HP Systems Insight Manager in a range of IT environments**
- » HP Systems Insight Manager basics
- » Why migrate from previous versions of Insight Manager?
- » Managing your infrastructure with Insight Manager
- » Additional HP Systems Insight Manager capabilities
- » Email this page

Learn more

- » Download a PDF version of this guide (686KB, PDF)
- » Servers and storage expertise center

- Wilma is an **IT administrator in a small department within a large enterprise**. She is responsible for managing the 20 Windows servers in her local environment. She understands the benefits of HP Systems Insight Manager for the larger IT environment, but she thinks that it may be too complex and expensive for her small department. In fact, she prefers to use the old Windows console even though she knows that it doesn't support the newest ProLiant servers. First, Wilma needs to know that HP Systems Insight Manager can be installed on a desktop running Microsoft Windows XP Professional, and she can use MSDE as her database. MSDE ships with HP Systems Insight Manager at no additional charge and can be installed along with HP Systems Insight Manager. Because HP Systems Insight Manager is browser-based, Wilma is not tied to her Windows management console to get information on her servers. She can log-in from any machine on the network and get secure access to her systems. This means that even if she is out of the office, she can still manage her servers. Wilma will also be pleased to know that it is easy to update HP Systems Insight Manager. Instead of having to install a new console with every agent release, she only has to update event definitions in the console. She will save time and increase her efficiency as she learns how to make the best use of HP Systems Insight Manager features for updating her systems software, running regular inventory reports, and more.

» [HP Systems Insight Manager basics](#)

Email this page

Send this information to a friend/colleague

Your name:

Your friend's email address:

» [HP's Privacy policy](#) Email will not be used for additional marketing

Comments:

To download the latest Adobe Reader, please go to the Adobe website at <http://www.adobe.com>.

 [Printable version](#)



Solutions - how-to guides

» Small & Medium Business

- » Products
- » Solutions
 - » How-to guides
 - » **Managing Windows environments**
- » Support & Drivers
- » Services

Buying options

- » Shop online at HP
- » Other ways to buy
- » Business to business

Or call 800-888-0262

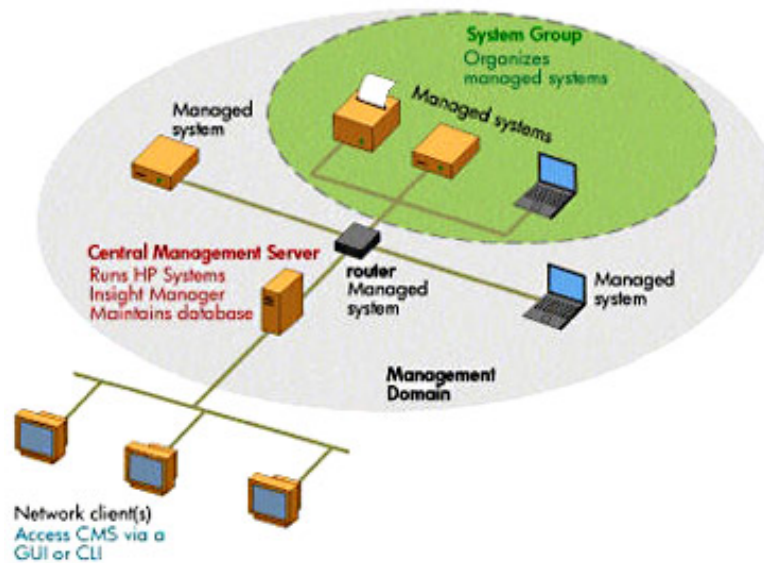
- » Special offers
- » News & Events
- » Request catalog & news

Managing small & medium Windows environments



HP Systems Insight Manager basics

HP Systems Insight Manager can be described by a simple distributed architecture comprising three types of systems — a central management server (CMS), managed systems, and network clients. Authorized users can access the central management server via a web browser graphic user interface (GUI) from any network client. It also provides a command line interface to allow scripted operations.

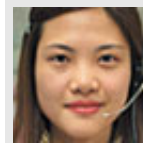


Central Management Server

The central management server (CMS) runs the HP Systems Insight Manager software and initiates all management operations within the management domain. The CMS can be a Windows, HP-UX, or Linux machine; however, this guide assumes that you will install the HP Systems Insight Manager software on a Windows system.

Note: The CMS can be a server or a desktop that meets the hardware requirements specified in "Table 1 - Requirements for installing HP Systems Insight Manager in a Windows environment" in the downloadable PDF of this guide.

HP Systems Insight Manager uses a database to store vital management domain information, including authorizations, systems, users, and more. HP Systems Insight Manager in a Windows environment supports Microsoft SQL Server Desktop Engine (MSDE) or Microsoft SQL 2000 databases. MSDE is shipped standard with HP Systems Insight Manager and will usually be sufficient to support an environment of up to 500 managed systems. You do not need a Microsoft SQL server license to use MSDE.



Contact HP

M-F 9-8 EST

[Chat live online](#)

[1-800-888-0262](#)

Managing Windows environments

- » Overview
- » HP Systems Insight Manager in a range of IT environments
- » **HP Systems Insight Manager basics**
- » Why migrate from previous versions of Insight Manager?
- » Managing your infrastructure with Insight Manager
- » Additional HP Systems Insight Manager capabilities
- » Email this page

Learn more

- » Download a PDF version of this guide (686KB, PDF)
- » Servers and storage expertise center

Managed systems

A managed system is any device in the management domain that communicates with the central management server. Managed systems can include servers, desktops, workstations, printers, laptops, hubs, or routers with an IP or IPX address. To get the full capabilities from HP Systems Insight Manager, ProLiant servers should have one or more management agents installed. You can install the ProLiant Windows management agents onto ProLiant PL300 series servers and above directly from HP Systems Insight Manager (see "Setup Windows managed systems"). ProLiant 100 series servers and non-HP platforms can be managed using standards-based management protocols such as Window Management Instrumentation (WMI) and Simple Network Management Protocol (SNMP).

Network clients

You can access HP Systems Insight Manager from any network client. The network client must be running a compatible browser to access the GUI (see "Table 1. Requirements for installing HP Systems Insight Manager in a Windows environment" in the downloadable PDF of this guide).

Systems and Event Lists

HP Systems Insight Manager enables you to group systems and events by attributes using system lists. HP Systems Insight Manager comes with a standard set of system lists that logically group systems and events based on information in the HP Systems Insight Manager database, such as operating system, hardware platform, status, event type and other criteria. In addition, you can create your own system lists that allow you to automatically select devices or events from the database for specific tasks and monitoring actions. System lists are dynamic; anytime a device reflects the criteria of an existing list, it becomes available in that list. See "Set up custom lists and folders (optional)" for instructions to create system lists. You can also create Favorites lists by manually selecting systems; for example, you may want to group systems by location (servers on the 7 th floor) or by owner (finance department systems). Each Favorites list displays a status icon representing the most critical status within the group, enabling administrators to identify problem areas at a glance.

Authorizations

Only users with a valid user ID and password on the central management server can access and perform tasks on a particular managed system or system group. Each user can perform tasks using the tools in a toolbox authorized for that particular user. There are two default toolboxes in HP Systems Insight Manager-the "All Tools" toolbox and the "Monitor Tools" toolbox. Users who are authorized to use the "All tools" toolbox can perform all administrative tasks and can change the state of managed systems. Occasional users or non-experts should be authorized to use only the "Monitor Tools" Toolbox. This guide assumes that you will have a small number of authorized users and will use only the default toolboxes. Please note, however, that toolboxes and authorizations can be customized for environments with larger numbers of users and different security needs for different managed systems.

Secure access using a Web browser

When you access HP Systems Insight Manager from a Web browser, you must log on using a secure sockets (SSL) connection. Your user name and password for HP Systems Insight Manager will be the same as your log-on credentials for the Windows operating system running on the central management server. HP Systems Insight Manager uses OS security and SSL to ensure strong authentication and data encryption and to minimize the risk of unauthorized access to the management console.

» [Why migrate from previous versions of Insight Manager?](#)

Email this page

Send this information to a friend/colleague

Your name:

Your friend's email address:

» [HP's Privacy policy](#) Email will not be used for additional marketing

Comments:

To download the latest Adobe Reader, please go to the Adobe website at <http://www.adobe.com>.

 [Printable version](#)

[Privacy statement](#)

[Using this site means you accept its terms](#)

[Feedback to SMB webmaster](#)

© 2006 Hewlett-Packard Development Company, L.P.



Solutions - how-to guides

» Small & Medium Business

- » Products
- » Solutions
 - » How-to guides
 - » **Managing Windows environments**
- » Support & Drivers
- » Services

Buying options

- » [Shop online at HP](#)
- » [Other ways to buy](#)
- » [Business to business](#)

Or call **800-888-0262**

- » [Special offers](#)
- » [News & Events](#)
- » [Request catalog & news](#)

Managing small & medium
Windows environments



Why migrate from previous versions of Insight Manager?

One of the key reasons to upgrade to HP Systems Insight Manager is the ability to extend server lifecycle management capabilities through plug-ins. In particular, the integration of vulnerability and patch management capabilities with the new ProLiant Essentials Vulnerability and Patch Management Pack enables you to quickly identify and resolve server security vulnerabilities using one tool instead of three different tools. Customers evaluating virtual machine technology will also be pleased to learn that the Virtual Machine Management Pack plug-in automatically associates virtual machines with their physical hosts and provides the ability to copy and migrate virtual machines from one host to another.

HP Systems Insight Manager has a more intuitive and flexible user interface than Insight Manager 7. It is based on standard Windows and x-Windows GUIs; and it provides customizable displays and powerful search capabilities (by device or event). The ability to centralize access to other HP and third-party management tools increases your efficiency. For example, you can link MS Terminal services directly to HP Systems Insight Manager to perform server administration tasks. You can also launch printer management and client management tools in context.

To facilitate migration, HP provides a Data Migration Tool (DMT) that exports configuration data from Insight Manager 7 Service Pack 2.3 and the Performance Management Pack and imports this data into HP Systems Insight Manager running on a Windows system. The tool is delivered with the HP Systems Insight Manager 4.2 kit.

» [Managing your infrastructure with Insight Manager](#)

Email this page

Send this information to a friend/colleague

Your name:

Your friend's email address:

» [HP's Privacy policy](#) Email will not be used for additional marketing

Comments:



Contact HP

M-F 9-8 EST

[Chat live online](#)

[1-800-888-0262](#)

Managing Windows environments

- » [Overview](#)
- » [HP Systems Insight Manager in a range of IT environments](#)
- » [HP Systems Insight Manager basics](#)
- » **Why migrate from previous versions of Insight Manager?**
- » [Managing your infrastructure with Insight Manager](#)
- » [Additional HP Systems Insight Manager capabilities](#)
- » [Email this page](#)

Learn more

- » [Download a PDF version of this guide \(686KB, PDF\)](#)
- » [Servers and storage expertise center](#)

To download the latest Adobe Reader, please go to the Adobe website at <http://www.adobe.com>.

 [Printable version](#)

[Privacy statement](#)

[Using this site means you accept its terms](#)

[Feedback to SMB webmaster](#)

© 2006 Hewlett-Packard Development Company, L.P.



Solutions - how-to guides

» Small & Medium Business

- » Products
- » Solutions
 - » How-to guides
 - » **Managing Windows environments**
- » Support & Drivers
- » Services

Buying options

- » [Shop online at HP](#)
- » [Other ways to buy](#)
- » [Business to business](#)

Or call 800-888-0262

- » [Special offers](#)
- » [News & Events](#)
- » [Request catalog & news](#)

Managing small & medium Windows environments



Managing your infrastructure with Insight Manager

Managing HP ProLiant 100 series servers

The HP ProLiant 100 series servers do not support HP Insight Management Agents. Therefore, HP Systems Insight Manager collects data from ProLiant 100 series servers through Window Management Instrumentation (WMI), which provides basic system inventory reporting. Not all data available in standard WMI will be shown or reported in HP Systems Insight Manager.

You should be able to see the following information:

- ROM-based SMBIOS tables populated by the ROM during POST
- OS-based information including MAC addresses, IP addresses, domain, OS version and serial number, last boot time, current running processes, and disk information
- Standard OS driver information including network, and logical and physical drive storage (from the OS point of view)

HP Systems Insight Manager will also provide up/down status polling of ProLiant 100 series servers.

Managing HP storage

HP Systems Insight Manager in conjunction with the HP Insight Management Agents will discover and monitor Modular Smart Array (MSA) series storage attached to ProLiant servers. HP Systems Insight Manager tracks physical and logical configurations and will receive pre-failure alerts in a manner consistent with internal storage resources. HP Systems Insight Manager will also discover and launch CommandView EVA and CommandView XP management software running on hosts managed by HP Systems Insight Manager.

In addition, the ProLiant Essentials Performance Management Pack (PMP) 3.1 integrates seamlessly with HP Systems Insight Manager to provide hardware bottleneck analysis for MSA storage. PMP provides the tools you need to receive proactive notification of developing bottleneck conditions, and debug existing performance issues on MSA500/MSA1000 shared storage devices. PMP 3.1 is automatically installed with HP Systems Insight Manager 4.2 and later.

Managing HP printers

You can integrate HP Web Jetadmin with HP Systems Insight Manager to extend its management capability to include printers. The integration of HP Web Jetadmin and HP Systems Insight Manager provides:

- Integrated server and printer discovery with printer drill-down. HP Systems Insight Manager allows you to easily discover a wide variety of printers, drill down on a specific printer, and launch the HP Web Jetadmin device status page to troubleshoot or manage a printer.



Contact HP

M-F 9-8 EST

[Chat live online](#)

[1-800-888-0262](#)

Managing Windows environments

- » [Overview](#)
- » [HP Systems Insight Manager in a range of IT environments](#)
- » [HP Systems Insight Manager basics](#)
- » [Why migrate from previous versions of Insight Manager?](#)
- » [Managing your infrastructure with Insight Manager](#)
- » [Additional HP Systems Insight Manager capabilities](#)
- » [Email this page](#)

Learn more

- » [Download a PDF version of this guide \(686KB, PDF\)](#)
- » [Servers and storage expertise center](#)

- Easy access to the HP Web Jetadmin console from HP Systems Insight Manager. You can launch the full HP Web Jetadmin application from the HP Systems Insight Manager menu, allowing quick and seamless access between the tools.

Learn more about [HP Web Jetadmin](#).

Managing clients

The HP Client Manager Connector for HP Systems Insight Manager enables you to consolidate deployment and management of HP clients and servers within a single HP Systems Insight Manager console. This software extends the core functionality of HP Systems Insight Manager with HP client hardware management and access to additional Altiris client lifecycle management functionality.

You can use the HP Client Manager Connector to:

- Discover and monitor the health of HP clients
- Manage systems software updates for HP clients
- Deploy new client systems through an integrated deployment wizard
- Remotely troubleshoot HP client problems using in-depth diagnostic reports

Note: You cannot install the Altiris Notification Server and the HP Client Manager Software on a system running the Vulnerability and Patch Management Pack due to conflicting IIS settings. Both the Altiris Notification Server and the Vulnerability and Patch Management Pack can be installed on systems other than the HP SIM system.

Learn more about [managing clients with Insight Manager](#).

Adding managed systems running Linux

This guide focuses on the management of Windows systems but HP Systems Insight Manager can also manage Linux servers. Learn more about [Linux agents for managed systems](#).

» [Additional HP Systems Insight Manager capabilities](#)

Email this page

Send this information to a friend/colleague

Your name:

Your friend's email address:

» [HP's Privacy policy](#) Email will not be used for additional marketing

Comments:

To download the latest Adobe Reader, please go to the Adobe website at <http://www.adobe.com>.

[Privacy statement](#)

[Using this site means you accept its terms](#)

[Feedback to SMB webmaster](#)

© 2006 Hewlett-Packard Development Company, L.P.



Solutions - how-to guides

» Small & Medium Business

- » Products
- » Solutions
 - » How-to guides
 - » **Managing Windows environments**
- » Support & Drivers
- » Services

Buying options

- » [Shop online at HP](#)
- » [Other ways to buy](#)
- » [Business to business](#)

Or call 800-888-0262

- » [Special offers](#)
- » [News & Events](#)
- » [Request catalog & news](#)

Managing small & medium Windows environments



Additional HP Systems Insight Manager capabilities

HP Systems Insight Manager provides a rich set of functionality to help you be more effective in the management of your IT environment. After you have completed the basic setup described later in this document, you should consider adding the capabilities described below. For more information see the HP Systems Insight Manager Help guide available [online](#) or on the HP ProLiant Essentials Foundation Pack Management CD (Management CD).

Version control

Version Control can save time and support costs by ensuring the consistency of your server system software. HP Systems Insight Manager catalogs HP system software such as BIOS, system drivers, Insight Management Agents, HP utilities, and firmware on managed systems, and compares them to those in a standard baseline set that you define. The system software and the baseline definitions are stored in a Version Control Repository on the CMS. You can schedule regular updates of the Version Control Repository and regular automatic comparisons of the system software on a managed system with that in a selected baseline set. You will be alerted of discrepancies so that you can use HP Systems Insight Manager to schedule an update of a system or groups of systems. For more information see the HP Systems Insight Manager Help guide available [online](#) or on the Management CD.

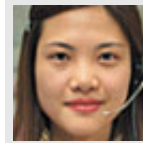
Note: This guide describes how to install and populate the Version Control Repository to assist in the initial deployment of the ProLiant Support Pack for Windows to multiple managed systems. To learn how to set up version control in its entirety, please refer to the help guide listed above.

Reporting

HP Systems Insight Manager collects comprehensive system data, enabling you to quickly produce detailed inventory reports on an ad-hoc or regular basis. Reports can be saved in HTML format or exported to CSV format for easy incorporation into popular reporting packages, making those monthly reports to management a snap! And, HP Systems Insight Manager makes it easy to identify systems that might need CPU or memory upgrades before migrating to the latest operating system. For more information see the HP Systems Insight Manager Help guide available [online](#) or on the Management CD.

Tool definition files

Tool definition files enable you to launch third-party tools on a managed system from the HP Systems Insight Manager menu. Tool definition files are useful if you have developed your own scripts or in-house applications to assist in administrative tasks. Tool definition files are simple XML documents that describe the type of tool to be run—for example, command line or web launch—and the title and location of the new menu item. A tool definition file can also specify any restrictions such as device filters or operating system



Contact HP

M-F 9-8 EST

[Chat live online](#)

[1-800-888-0262](#)

Managing Windows environments

- » [Overview](#)
- » [HP Systems Insight Manager in a range of IT environments](#)
- » [HP Systems Insight Manager basics](#)
- » [Why migrate from previous versions of Insight Manager?](#)
- » [Managing your infrastructure with Insight Manager](#)
- » **Additional HP Systems Insight Manager capabilities**
- » [Email this page](#)

Learn more

- » [Download a PDF version of this guide \(686KB, PDF\)](#)
- » [Servers and storage expertise center](#)

filters. For more information, see the HP Systems Insight Manager Help guide available [online](#) or on the Management CD.

HP Systems Insight Manager Plug-ins

Several optional plug-ins that integrate new functionality in HP Systems Insight Manager are currently available. With HP Systems Insight Manager 4.2, you get free licenses for the following plug-ins. For more information on the latest plug-ins, go to <http://www.hp.com/go/hpsim>.

Vulnerability and Patch Management Pack

You get two free licenses for the ProLiant Essentials Vulnerability and Patch Management Pack with HP Systems Insight Manager 4.2. This plug-in integrates vulnerability assessment and patch management functions into HP Systems Insight Manager, enabling you to identify and remove security vulnerabilities quickly, efficiently, and reliably. For more information, go to <http://www.hp.com/go/hpsim>.

Performance Management Pack

You get five free licenses for the ProLiant Essentials Performance Management Pack with HP Systems Insight Manager 4.2. This plug-in tracks CPU, memory, disk, I/O components, and bus utilization, and it provides proactive notification of potential bottleneck conditions. It also enables you to debug system configuration-related performance issues. PMP displays performance information, logs the information to a database for later analysis or reporting, and sends proactive alerts to HP Systems Insight Manager. For more information, go to <http://www.hp.com/go/hpsim>.

Virtual Machine Management Pack

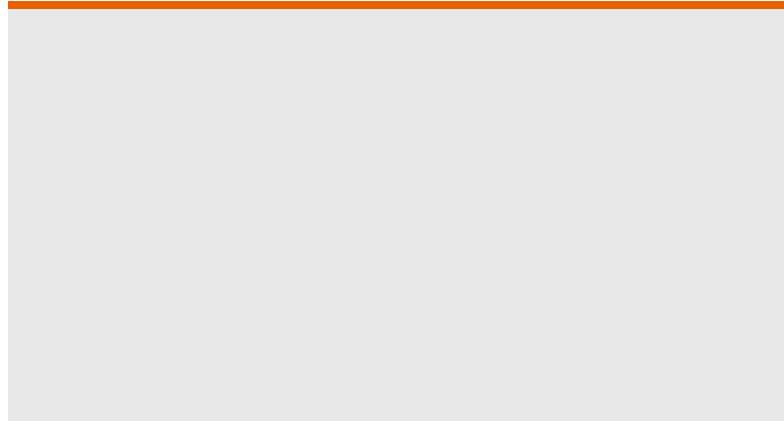
You get five 30-day evaluation licenses for the Virtual Machine Management Pack at installation. The Virtual Machine Management Pack (VMM) allows systems administrators to manage physical and virtual server assets in a consistent fashion. VMM associates virtual machines with physical hosts, provides performance metrics for virtual machines and their hosts, and enables systems administrators to copy virtual machines or move virtual machines from one physical host to another. VMM manages VMWare ESX, VMWare GSX, and Microsoft Virtual Server virtual machines in a consistent fashion, allowing you to have greater flexibility in deploying virtual machine technology.

Installing HP Systems Insight Manager

Now that you know what Insight Manager can do for your business, follow the "Download a PDF version of this guide" link at right to download a printable version of this guide that includes a complete tutorial on how to install and configure this useful tool.

» [Go back to overview](#)

Email this page



Send this information to a friend/colleague

Your name:

Your friend's email address:

» [HP's Privacy policy](#) Email will not be used for additional marketing

Comments:

To download the latest Adobe Reader, please go to the Adobe website at <http://www.adobe.com>.

 [Printable version](#)

[Privacy statement](#)

[Using this site means you accept its terms](#)

[Feedback to SMB webmaster](#)

© 2006 Hewlett-Packard Development Company, L.P.