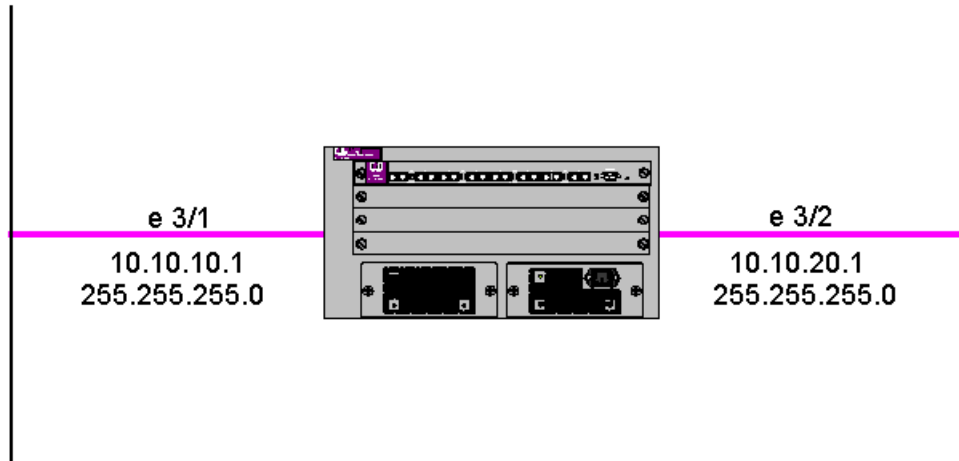


IP Routing and Switching of non-IP (no VLANs)

With this configuration example, the Routing Switch will route IP traffic and switch non-IP traffic between two ports. In this example IP learns and advertises routes using RIP version 1 (of course, RIP is not required for routing).



WARNING:

The following sequence of CLI commands given in the example below will first reset a routing switch back to factory default settings. Please save your current configuration if necessary.

NOTES:

1. The interface port number (for example: interface e 3/1) and the IP addresses (for example: 10.10.10.1) may differ in your network, so adjust these values accordingly. The Routing Switch model (for example, HP 9304M), type of module, and software version number below may not accurately reflect the device(s) you are configuring.
2. Some older versions of Routing Switch software do not include the version in the output of the **show configuration** command. For those versions, use **the show version** command to see the software version.
3. The configuration example below was created on software version 05.2.16.

CONFIGURATION COMMANDS (created on software version 05.2.16):

```
HP9304>enable
HP9304#era startup-config
HP9304#reload
HP9304>enable
HP9304#conf t
HP9304(config)#router rip
HP9304(config-rip-router)#interface e 3/1
HP9304(config-if-3/1)#ip address 10.10.10.1 255.255.255.0
HP9304(config-if-3/1)#ip rip v1-only
```

```
HP9304(config-if-3/1)#interface e 3/2
HP9304(config-if-3/2)#ip address 10.10.20.1 255.255.255.0
HP9304(config-if-3/2)#ip rip v1-only
HP9304(config-if-3/2)#write memory
HP9304(config-if-3/2)#exit
HP9304(config)#exit
HP9304#reload
```

RESULTING CONFIGURATION:

```
HP9304>show configuration
Startup configuration:
!
ver 05.2.16T43
module 1 8-port-gig-management-module
module 3 24-port-copper-module
!
!
!
!
!
interface e 3/1
  ip address 10.10.10.1 255.255.255.0
  ip rip v1-only
!
interface e 3/2
  ip address 10.10.20.1 255.255.255.0
  ip rip v1-only
!
!
router rip
!
end
```