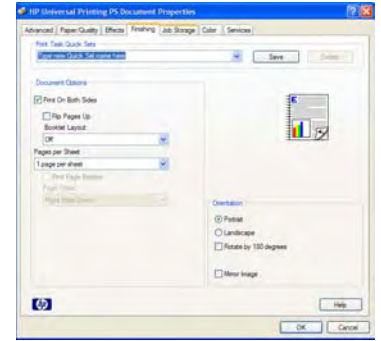


HP Universal Print Driver Series for Windows®, version 3.0

HP PCL6 • HP PCL5 • HP postscript level 2 and 3 emulation



Simplify printing. Save IT time. Cut down on calls to the help desk.

Save valuable IT time

- **Free up your IT staff.** The HP Universal Print Driver Series for Windows is a single, intelligent driver that replaces individual drivers for HP networked printers. By deploying one full-featured driver, you virtually eliminate the need for your IT staff to install and manage multiple print drivers, saving both time and money in deploying, testing, and supporting what could be hundreds of print drivers as well as responding to end user calls.
- **Enable broader device compatibility.** The latest version of the HP Universal Print Driver Series for Windows supports HP PCL6 in addition to HP PCL5 and HP postscript level 2 and 3 emulation. As a result, this driver is compatible with more HP print devices than ever, including most color and black-and-white printers, multifunction products (MFPs), and digital copiers.
- **Control color usage.** The HP Universal Print Driver with Active Directory provides color access control capability. IT administrators can limit who uses color and when they use it by assigning color access by user, application, or time of day. They can also shut down color access completely until it's needed for special projects. This feature ensures that those who truly need color printing, such as your sales team and marketing department, can print in color, while those who don't need it default automatically to black-and-white printing.

Make printing easier

- **Provide one driver and one interface for all users.** The HP Universal Print Driver for Windows features a simplified user interface that is consistent between devices so end-users enjoy the same experience regardless of their device.

- **Experience greater color accuracy in your finished documents.** Achieve your communication goals with access to device-specific color tables, so you are able to select precisely the color combinations you need.
- **Improve productivity and satisfaction.** Give end-users access to advanced printer options, including n-up printing, job storage, input trays, output bins, two-sided printing, stapling, and watermark printing. The HP Universal Print Driver Series for Windows also recognizes new finishing devices when they are added and provides users access, without having to install a new print driver.

Reduce calls to the help desk

- **Empower users with real-time information.** Real-time print job, supplies, and device information helps users stay productive. For example, the HP Universal Print Driver Series for Windows lets users know when their print job has finished printing, saving trips to the printer. In addition, self-help information greatly reduces the number of calls to the help desk, improves printer uptime, and minimizes staffing expenses. This information is provided as a Status Notification Pop-up (SNP), similar to the notification you see when you receive a new e-mail message. SNPs are fully configurable to your environment.

HP printing and imaging systems help you create powerful, professional communications easily. Imaging devices, supplies, accessories, and services are designed together to work together and are invented to meet your business needs.



HP Universal Print Driver Series for Windows, version 3.0

Easy for everyone in the office

Install the HP Universal Print Driver Series for Windows on any Windows PC with just a few clicks to enable users to print to most HP printing device with HP PCL6, HP PCL5, or HP postscript level 2 and 3 emulation. Faster and far less complicated than searching for multiple specific print drivers, HP Universal Print Driver Series for Windows is always accessible from Windows applications.

Designed with the future in mind, the driver provides access to most of the advanced printing features found in the next generation of HP business printers. The driver is bundled with select HP and Compaq notebook and tablet PCs and is available as a free download from the HP Web site at www.hp.com/go/universalprintdriver.

Simple, managed corporate printing

Enterprise businesses have a huge investment in their print resources, and providing and managing end-user access to these resources can be a full-time job for busy IT administrators. While businesses may have a number of different printing and imaging devices with capabilities ranging from black-and-white laser printing to color laser printing to color photo printing on premium glossy paper, it is often undesirable to offer all of these capabilities to all users. At the same time, productivity stalls when users don't have access to the features they truly need, and performing individual driver installations can monopolize an IT staff. Alleviate such headaches with one driver for all HP printers.

The HP Universal Print Driver Series for Windows supports tools that enable IT administrators to assign individual, group, and job attributes:

- The HP Managed Printing Administrator (MPA) tool allows IT administrators to easily define printing and device discovery privileges as required for their environment. With HP MPA, IT administrators can control access to printers or printer capabilities, such as color printing, by creating and modifying Managed Print Policies (MPPs).
- The HP Universal Print Driver with Active Directory can simplify and expedite set-up further by automatically recognizing group and individual attributes, such as color access or other permissions already assigned through Active Directory Services (ADS).
- Create Managed Printer Lists to make printer configuration easier with the HP MPA tool. Design custom printer lists for users based on location, printer features, or common printer functionality. Printer lists may be imported from HP Web Jetadmin or Novell print shares. With optional HTML views or mappings, lists of printing devices can be easily updated and defined for different users in different environments.

Effortless general office printing

In many cases, corporate users print only basic office documents and rarely change printer settings. The HP Universal Print Driver Series for Windows is ideal for these users: with only a few clicks they can easily print to any HP printing device.

Using HP's Managed Printer List option, IT staff can configure and designate printers for simple access by corporate and mobile users via the driver.

Simple network printing for mobile workers

HP recognized that the proliferation of portable PCs meant more and more people would be working in multiple locations. To make the most of the mobile work experience, users must be able to access network printing resources. The biggest obstacle to accessing printing resources has been print driver support. Even though portable PCs provide unprecedented location flexibility, they are typically configured with driver support for a limited number of printers. HP developed a solution: HP Universal Print Driver Series for Windows.

To download the free HP Universal Print Driver Series for Windows, version 3.0, go to: www.hp.com/go/upd

For support and more information, go to: www.hp.com/support/universalprintdriver

To download the HP Managed Printing Administrator go to: www.hp.com/go/mpa

For support and more information, go to: www.hp.com/support/mpa

Compatibility

Supports Microsoft® Windows 2000, XP, XP Professional x64, and 2003 Server (32/64 bit); Microsoft Windows Terminal Services and Citrix Presentation Server Environments.

Size: 14 MB

Supported printers

HP LaserJet/Color LaserJet

CM1015mfp	P2700 series	3392 AiO	4500 series	8000 series
1150 series	3000 series	3700 series	4550 series	8150 series
1160 series	301x series	3800 series	4600 series	8150mfp
1200 series	P3005 series	4000 series	4610 series	9000 series
1300 series	3020 series	CP4005 series	4650 series	9000mfp
1320 series	M3027 series	4050 series	4700 series	9040 series
2100 series	3030 series	4100 series	4730mfp	9050 series
2200 series	M3035 series	4100mfp	series	9050mfp
2300 series	3052AiO	4200 series	5000 series	9055mfp
24x0 series	3050 AiO	4240 series	M5025 series	9065mfp
P2015 series	3055AiO	4250 series	M5035 series	9500 series
2500 series	3200 series	4300 series	5100 series	9500mfp
2550 series	3300 series	4345 series	5200 series	
2605 series	3300mfp	M4345 series	5500 series	
	3390 AiO	4350 series	5550 series	

HP Business Inkjet/Officejet

2250 series	2300 series	2600 series	3000 series
2280 series	2500CM series	2800 series	9100 series all-in-one

Supported by HP postscript emulation driver edition only

HP Color LaserJet 2500 and 2550 series printers, 2800 series all-in-one; HP Business Inkjet 2800 series printer

©Copyright 2006 Hewlett-Packard Company

The information contained herein is subject to change without notice. The only warranties for HP products and services are set forth in the express warranty statements accompanying such products and services. Nothing herein should be construed as constituting an additional warranty. HP shall not be liable for technical editorial errors or emissions contained herein. HP and the invents signature are trademarks of the Hewlett-Packard Company. Windows and Windows XP are U.S. registered trademarks of Microsoft Corporation.

Printed in [country]

4AA0-7753ENUC, Rev. 3, 11/2006

