



HP SMARTSTREAM PRODUCTION ANALYZER

Effective understanding of your
production efficiency



HP SmartStream Production Analyzer monitors, tracks, and benchmarks production performance, providing vital statistics to owners, production managers, and operators on production efficiency across presses and sites. This highly versatile production software helps to enhance productivity for HP Indigo digital press owners with complex production operations.

Pinpoint productivity gaps. HP SmartStream Production Analyzer issues real time and historical reports on presses and shifts, measures production compared with industry benchmarks, and tracks the lifespan of consumables. This data reveals gaps in operations, enabling press operations to reach their maximum potential.

Vital statistics, flexible reports. HP SmartStream Production Analyzer has the capacity to issue a wide range of statistics. Reports can be either cumulative or comparative according to different production properties: press, press type, groups of presses, shift, job status, or operator. This gives owners, production managers, and operators the capacity to analyze performance such as productivity and reporting, in complex printing environments and multisite printing facilities.

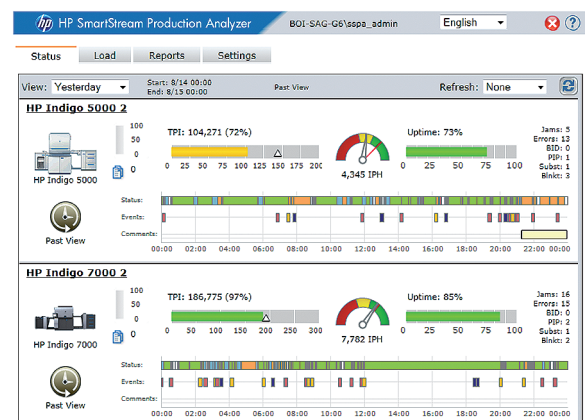
Real-time monitoring. The software is designed to enable shift leaders to see all events and press statuses in real-time from the start to end of a shift, including current performance in comparison to production targets. In this way, the operator can immediately identify degradation in performance and quickly respond to get press production back on track.

Historical reports. Collecting information over time, the HP SmartStream Production Analyzer accumulates production data per shift and per operator. This data can then be compared against HP industry benchmarks and factory targets. This allows for better production planning and design of production structure.

Discover top performers. HP SmartStream Production Analyzer issues rankings according to performance in the printing operation, enabling owners and managers to handpick operators and presses for use for rush jobs or during peak production operations.

Easy to install and operate: HP SmartStream Production Analyzer, available in 10 languages, is very easy to install and operate. Customer support is delivered remotely via telephone by Remote Support Personnel.

Real-time monitoring of performance, including quantity of impressions, uptime, and targeted production.

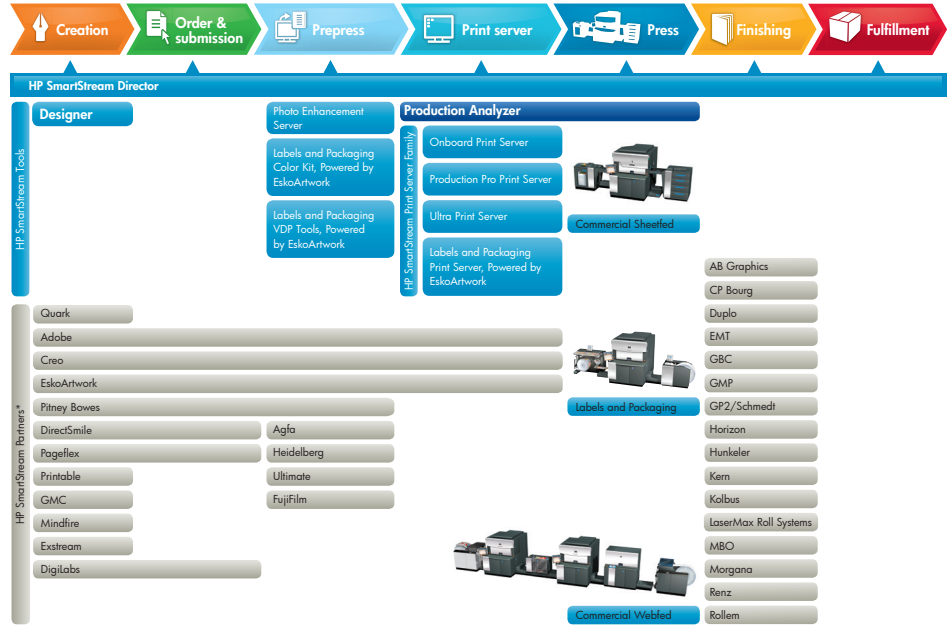


To learn more, visit
www.hp.com/go/HPSmartStreamProductionAnalyzer

HP SmartStream Production Analyzer—a powerful workflow component in the HP SmartStream family

HP SmartStream is a graphic arts portfolio of components that helps customers create production workflow solutions to meet a broad range of market segments and application needs. The HP SmartStream portfolio provides end-to-end workflow management, from job creation to fulfillment. When combining best-in-class HP SmartStream and partner components, the result is greater flexibility, with specific solutions to address key market segments that are customizable and scalable to your unique business needs.

HP SmartStream Workflow



*This diagram only shows worldwide Platinum and Gold Partners.

Technical Specifications Version 1.7

HP Indigo digital presses supported	HP Indigo 7500 Digital Press, HP Indigo W7200 Digital Press, HP Indigo 7000 Digital Press, HP Indigo WS6000 Digital Press, HP Indigo press 5500, HP Indigo press 5000, HP Indigo press 3050, HP Indigo WS6000p Digital Press, HP Indigo 3550 Digital Press.	
Operating system	Microsoft Windows 2008 Standard server R2	
Client OS versions	Windows® XP, Vista, 2003, and 2000; Mac® OS 10.4 and 10.5	
UI Languages	English, German, Italian, French, Spanish, Russian, Japanese, Chinese, Korean, Portuguese	
Hardware	ProLiant ML350 Tower Server G6 <ul style="list-style-type: none"> Intel 5000z Chipset, 2x Quad core - 2.5 Ghz, 1333 FSB 4 GB RAM 5 x 250 GB SATA 7.2K HDDs 19 in monitor, keyboard, mouse 	HP ProLiant DL360 G7 Rack Mounted Server <ul style="list-style-type: none"> 2 x X5670 Hexa Core 2.93 GHz CPU 12 GB RAM P410i Controller with 512MB FBWC 2 x 146 GB 10K 6G SAS 2.5 in HDD C: 2 disks in RAID 1+0

North America

Hewlett-Packard Company
1001 Summit Boulevard
Mailstop 401
Atlanta, GA 30319
USA
Tel: +1 800 289 5986
Fax: +1 404 648 2054

Europe, Middle East, and Africa

Hewlett-Packard Company
Avenue Céramique 241
6221 KX Maastricht
The Netherlands
Tel: +31 88 750 1700
Fax: +31 88 750 1715

Asia Pacific

Hewlett-Packard Company
138 Depot Road
Singapore 109683
Tel: +65 6727 0777
Fax: +65 6276 3160

Latin America

Hewlett-Packard Company
5200 Blue Lagoon Drive
Suite 950
Miami, FL 33126
USA
Tel: +305 267 4220
Fax: +305 265 5550
informahpindigo@hp.com

Israel

Hewlett-Packard Company
Kiryat Weizmann
P.O. Box 150
Rehovot 76101
Israel
Tel: +972 8 938 1818
Fax: +972 8 938 1338

© 2010, 2011 Hewlett-Packard Development Company, L.P. The information contained herein is subject to change without notice. The only warranties for HP products and services are set forth in the express warranty statements accompanying such products and services. Nothing herein should be construed as constituting an additional warranty. HP shall not be liable for technical or editorial errors or omissions contained herein.

PANTONE® and other Pantone, Inc. trademarks are the property of Pantone, Inc.

4AA1-2543ENW, August 2011. This is an HP Indigo digital print.

