



HP Photosmart Essential 2.0— Bring Your Photos to Life

Reviewer's Guide

Introducing HP Photosmart Essential 2.0



HP Photosmart Essential makes it fast, fun and incredibly easy to organize, edit, print, create and share your photos—all in one place.

Key features

Design simplicity—A clean, elegant user interface showcases your photos, placing your most prized memories at your fingertips. Guided task flows and on-screen help ensure success in all that you want to do with your photos. New Back, Forward and Home icons ensure no wrong turns.

Personalized Home Page—A personalized Home Page offers quick, easy access to your most recent photos and projects. A new user log-in links your offline activities to a free online account at Snapfish.com,¹ a service of HP, where you can order professional prints or photo gift products and securely share photos with friends and family.

New Photo Library—The Photo Library automatically organizes all of your photos for you. Browse and view your photos by Date, Tag or Folders. Variable thumbnail size viewing lets you easily see your entire collection.

Find, organize and enjoy—Easily find the photos you're looking for by Date, Tag or Folders. Mark photos as Favorites so they are right at your fingertips, or search by name.

Slide Shows—View your photos as slide shows to your own music right on your PC.

Lab-quality prints at home the first time, every time—Use the fast lane to get lab-quality prints and photo templates in a couple of clicks.

Easily share photos without large attachments¹—Seamless integration with Snapfish.com makes sharing photos without large attachments a snap.

Create more meaningful memories—Photo templates automatically turn photos into printed album pages—great for scrapbooks, brag books, and more.

The best editing tools—Fix photos in a jiffy with the most commonly used editing tools, including automatic red-eye and manual pet green-eye correction, and Photo Fix to correct color and lighting. A one-click fix for low-resolution photos is ideal for enhancing camera phone images and more.

Desktop background—Set photos as desktop wallpaper simply by right-clicking a selected photo and choosing the feature from a list of available options. Other features make it easy to edit photos, access photo information, create duplicates, and more.

Finding information

This guide provides information to help you evaluate key features offered with HP Photosmart Essential 2.0. For more information, visit www.hp.com/go/pse. If you have questions or want further technical detail on HP Photosmart Essential software features, please use the contact information on page 10 to reach an HP representative.

¹ Snapfish online photo service availability varies by country/region.

Incredibly Easy Photo Software



Find, fix, and enjoy photos

HP Photosmart Essential 2.0 makes it easier than ever to organize, edit, print, and share your digital photos. Simply add your photos to the Library and the software automatically organizes them for you. Intuitive icons make it easy to mark your favorites, add tags to your photos, and group them any way you like for fast, easy retrieval.

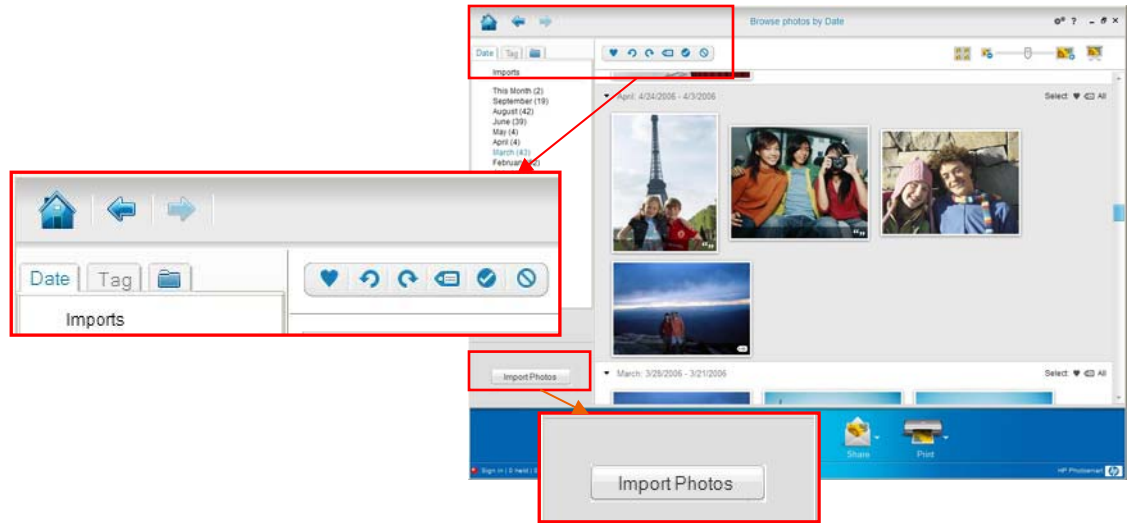
Double-click the HP Photosmart Essential 2.0 icon on your desktop (automatically installed when you install the software) to launch the HP Photosmart Essential Home Page. The personalized Home Page makes it easy to access recent photos. “Share” and “Print” icons on the lower portion of the screen provide quick access to share and print functions. A new user log-in offers seamless integration to HP’s Snapfish online photo service for uploading and sharing photos.²

The software organizes all of your photos and videos and stores the entire collection in the Library. Click the View Library button on the Home Page to browse photos by Date, Tag, or Folder.

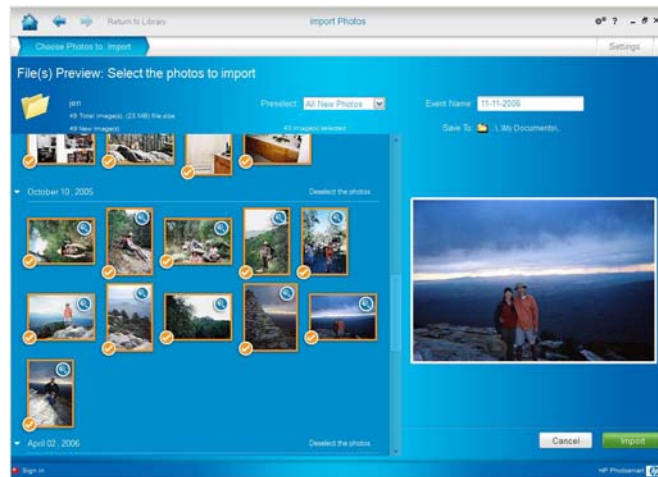


Intuitive icons on the Browse screen make it easy to mark and search photos as Favorites or Tags—keywords that you assign to your photos such as *Mom*, *Hawaii* or *wedding*—to help you quickly find photos of people, places, events and more, and select the ones you want to use. Selections are held in the Photo Tray until you clear them. Photos are removed from the Photo Tray, not from the computer. Thumbnails of your photos are displayed in Basic, Compact or Detail views. You can even view your photos as a slide show with your own music.

² Snapfish online photo service availability varies by country/region.



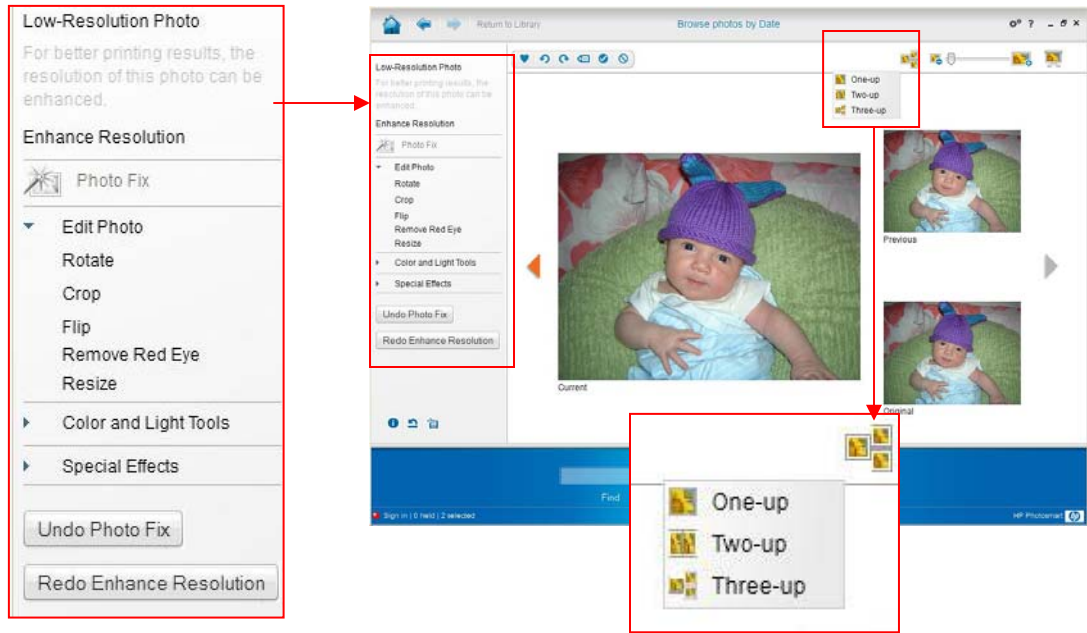
Click the Import Photos button to add photos from a memory card or other device, such as a camera, scanner, camera phone, removable drive or CD to the Library. To import photos from a folder on your computer, click the Folder icon to browse and select photos to import. Previews of your photos are displayed on the right side of the screen.



Photosmart Essential 2.0 provides the most commonly used editing features, including a one-click fix for low-resolution photos—ideal for camera phone images—and a one-click color and lighting fix. Viewing options—One-up, Two-up and Three-up—let you easily see the results of editing features by displaying Current (edited), Previous, and Original photos on a single screen (see example screens on page 5).

Other editing tools make it easy to rotate, crop, flip, resize photos, and remove red and pet green eye (see page 5). Color and Light tools let you apply HP’s Adaptive Lighting and adjust image temperature (warmer or cooler). A Special Effects tool allows you to convert photos to black and white or sepia.

To launch the editing features, simply double-click the photo you want to edit on the Library screen, or right-click the photo and select “Edit” from the list.



Correcting red-eye, or pet green-eye in photos is easy with built-in “Red Eye Fix.” Simply move your cursor over the photo to display the magnifying tool. Hover the target in the center of the tool over the red/green eye in the photo until it changes, then click on the eye to fix it.



Before green-eye correction



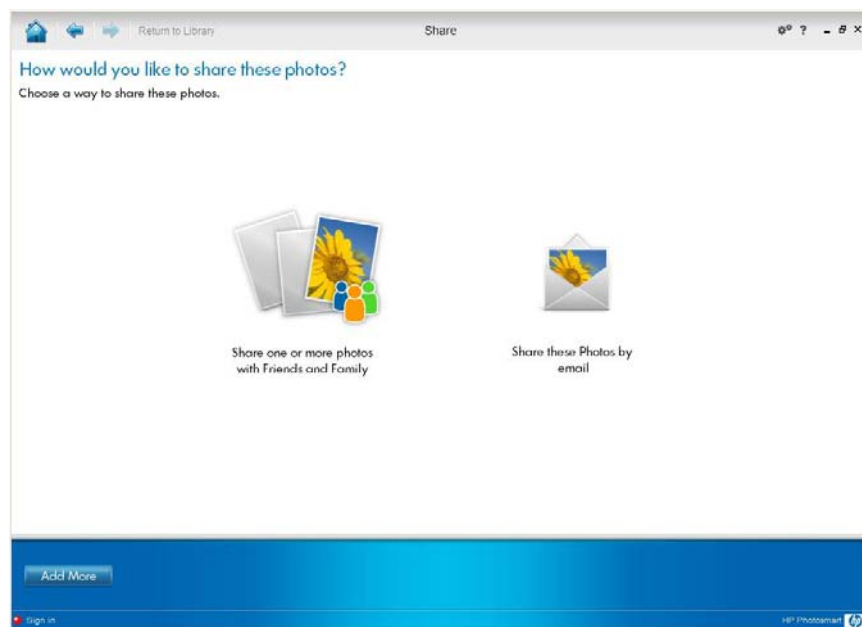
After green-eye correction

Easily share photos

HP Photosmart Essential 2.0 makes it easy to share one or multiple photos by uploading them to Snapfish.com,¹ a service of HP, for secure online sharing.

Click the Share icon on the Home Page or Library screen to access Photosmart Essential share features (choices for sharing photos vary by country/region). Online sharing via the secure website allows you to share photos without large email attachments—perfect for sharing a number of photos.

You can use Photosmart Essential 2.0 to email photos in the Photo Tray as attachments, using your default email program. Simply type the recipient's email address, or select an address from your email address book or contact list, and your email program will send the photos in the Tray.³ (HP recommends limiting the number of photos you send to prevent potential problems with email message size limits).

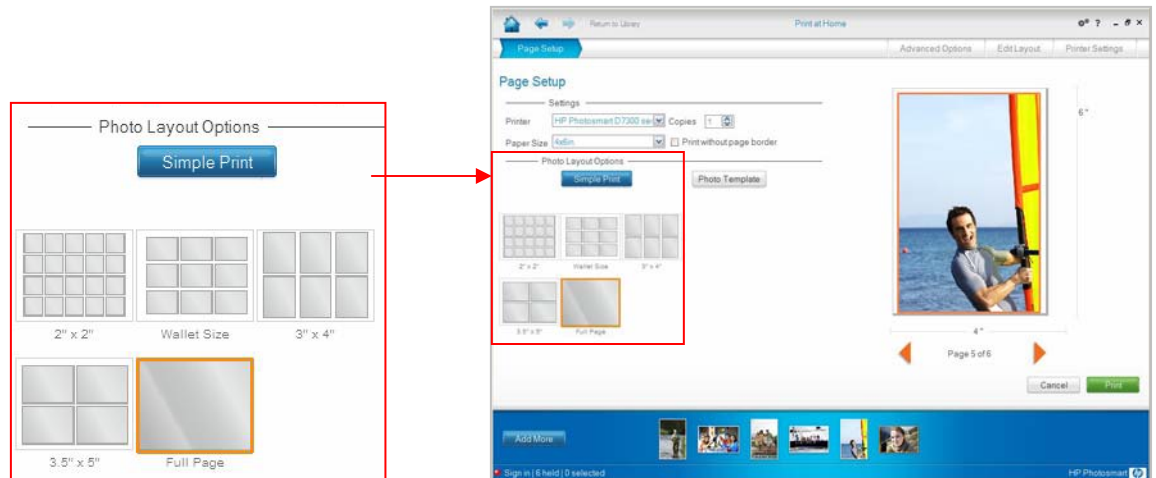


³ The following programs can be used with HP Photosmart Essential 2.0 to send photos as attachments: Microsoft Outlook, Outlook Express, Lotus Notes, Eudora, AOL 7.0 or higher, Hotmail (requires Internet Explorer 7.0 or higher).

Print lab quality photos at home

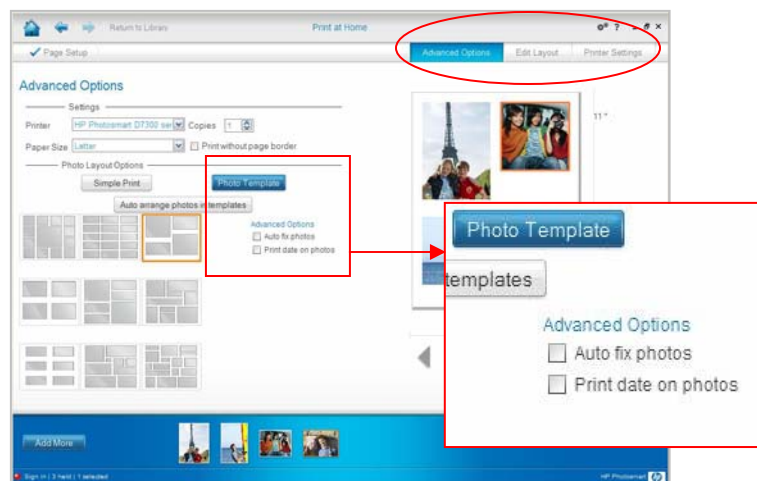
Photosmart Essential 2.0 makes printing beautiful photos at home quick and easy. To print photos or template pages, click the Print icon on the Home Page or the Library screen. Select “Simple Print” to print photos in a single size, or “Photo Template” to select a customized page layout for your photos.

The Page Setup screen automatically launches and displays a preview of your selected photo(s). Follow the ‘fast lane’ for quick printing in a couple of clicks. Photosmart Essential automatically selects your default printer and presents the optimal settings for the best quality photo. Simple Print templates include: 2x2-inch, Wallet Size, 3x4-, 3.5x5-, 4x6-, 5x7-, 8x10-inch, or Full Page.



Select Photo Template to choose from one of nine custom photo layouts for simple and creative collage-type output—perfect for preserving in bound albums. The software automatically arranges the photos in the Photo Tray in the selected photo layout. You can rearrange photos simply by clicking and dragging photos to the desired location on the page.

An Advanced Options button in the upper portion of the screen lets you apply HP’s “Auto fix photos” tool to automatically fix brightness and contrast. You also have the option to add a date to your photos.



Click “Edit Layout” to resize photos, rotate, crop or reduce photos to fit the page.

A Printer Settings button provides quick access to printer settings. To launch the Document Properties dialog box for your printer, click “Advanced Printer Settings” on the Printer Settings screen. When you are ready to print, click the Print button in the lower portion of the screen.

You can return to the previous screen(s) at any time simply by clicking the Back (left) arrow in the upper left corner of any screen, or advance to the next screen using the Forward (right) arrow. Click the Home icon to return to the Photosmart Essential Home Page.

Evaluating HP Photosmart Essential 2.0



Install the software

HP Photosmart Essential 2.0 is available with select HP products and is automatically installed with product-related software. The software is also available to download free at: www.hp.com/go/pse.

If you received a separate HP Photosmart Essential 2.0 CD, insert the CD in your computer CD-ROM drive. Setup will start automatically. The Welcome to the Install Wizard screen is displayed. If setup does not start automatically, open My Computer, locate and double-click the letter for your CD-ROM drive, then double-click the Setup application icon. Click Next and follow the onscreen instructions to install the HP Photosmart software. Click Finish. Double-click on the HP Photosmart Essential 2.0 icon on your desktop to start the software.

Experience software features

After you have installed the software, try various features, such as finding your photos by Date, Tag or Folder, marking photos as Favorites and applying the one-click fix to low-resolution photos, such as camera phone images. Click the Print icon to print photos in a single size, or select a Photo Template to create a photo collage. Click the Share icon to share photos by email or online through a secure website (after you have created an account via the user log-in on the HP Photosmart Essential Home Page). For more information on accessing and using software features, click the Help button (the “question mark” icon) at the top of any screen.

Evaluate the software

- Consider the number of steps and the length of time required for software installation.

You can download and install HP Photosmart Essential 2.0 in under one minute using a broadband Internet connection, or less than 15 minutes using a 56K modem.

- Is the software interface intuitive and easy to use?

HP Photosmart Essential removes the barriers of digital photography by providing a guided task flow, easy back and forth buttons to limit wrong turns, a personalized Home Page, and integrated on-screen help.

- Are separate applications or discs required for different photo functions, such as viewing, editing or printing photos?

HP Photosmart Essential 2.0 includes everything you need to view, organize, edit, print and share photos—all in a single, integrated application.

- How easy is it to view and select photos?

HP Photosmart Essential offers a variety of ways to view and manage photos by date, tag, folder, favorite and search.

- How easy is it to print and share photos?
New streamlined, guided task flows in HP Photosmart Essential 2.0 provide the quickest route to lab-quality prints and easy photo sharing.
- Does the software require a new HP printer for users to benefit from the various features?
HP Photosmart Essential 2.0 actually 'tunes up' older HP printers by providing HP's newest imaging and printing algorithms. With Photosmart Essential 2.0 and HP's latest imaging and printing enhancements, images that previously may have yielded only satisfactory results may now be worthy of framing. Users can get great results, regardless of whether their printer is new or old.
- Is the software compatible with other photo editing applications?
HP Photosmart Essential will coexist on your computer with HP Photosmart Essential 1.12 and Photosmart Premier 6.5 and even integrate keywords from previous versions of Photosmart Premier.
- Consider the initial cost of the application.
Simply go to www.hp.com/go/pse to download the latest free version. Then let us know what you think by emailing: frank.fellows@hp.com.

System requirements

PC with Pentium II 300 MHz or higher processor, Microsoft® Windows XP,⁴ Vista, Microsoft Internet Explorer 6.0 or higher, minimum 128 MB RAM and 20 MB free hard drive space for installation.

For More Information

Hewlett-Packard Company

300 Hanover Street
Palo Alto, CA 94304-1185
Phone: (650) 857-1501
Fax: (650) 857-5518
Web address: www.hp.com

Contact HP by country:

www.welcome.hp.com/country/us/eng/contact_us.html

HP Shopping (for U.S. only)

www.hpshopping.com or 1-888-999-4747

⁴ Macintosh support is not available at this time.

