



The HP Mobile Innovations Tour

Future of “always connected” communications

Overview

The HP Mobile Innovations Tour is a showcase of concepts around the future of mobile communications. The world’s current mobile environment continues to grow more complex. Today’s notebooks, mobile phones, PDAs and digital cameras all continue to add more features, more options and more wireless technologies.

HP’s perspective for these concepts follows the philosophy that “out of integrated complexity will come disintegrated simplicity.” The conceptual creations below represent a vision where devices are function-specific and provide an “always connected” experience.

The industrial design behind these concepts strives for extraordinary simplicity, elegance and ease of use that result in an “insanely simple” customer experience.

The Concepts:

Watch – Wireless Gateway/Hub

Personal wireless gateway device – watch-like form factor. Acts as the central wireless hub containing the access technologies/radios to enable an “always connected” experience. Personal gateway connects to various devices (phone, PC, notebook, etc.).



Mat

Flexible, portable, personal-size display that is “always on” and ready to connect to the wireless hub/watch. A larger mat can be used to access services such as games or content better suited for a larger display.



Tablet

Thin client type of device. Trend toward “web based” solutions moves content/applications to Internet, shifting devices away from traditional memory-based architectures. Resulting devices are thinner, lighter, with longer battery life. Device takes on personality of user based on “personal wireless gateway” information.



Pen

Device offering multiple options for input.



Thin Client

Moving towards the trend of web-based solutions, a thin client pushes the boundaries for "thin and light" devices. Example: ultra-thin and light "notebook".



Digital Wallet

In "always connected" mode, the digital wallet displays up-to-the-moment transactions for a wide variety of personal services such as checking and credit cards.



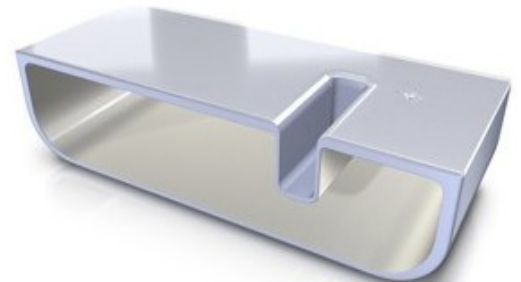
Smart Shelf

Allows communal display of information. Envision wireless gateway/watch as a virtual repository of data/services that can be accessed and shared. Example: Place watch on smart shelf and it will automatically recharge while also providing the "always connected" experience.



Coffee Table

Loading thin clients turns coffee table top into a larger display that can be used for collaboration. Also acts as charger base for the device.



© 2006 Hewlett-Packard Development Company, L.P. The information contained herein is subject to change without notice. The only warranties for HP products and services are set forth in the express warranty statements accompanying such products and services. Nothing herein should be construed as constituting an additional warranty. HP shall not be liable for technical or editorial errors or omissions contained herein.

12/2006