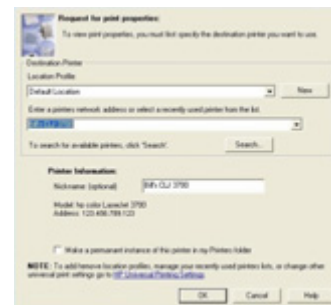


# HP Universal Print Driver Series for Windows® , version 1.0

HP PCL5 • HP postscript emulation



Choose from HP PCL5 and HP postscript emulation driver editions to get one print driver that gives end-users effortless access to almost any HP printer and allows IT administrators to manage access to printers more easily and effectively.

## Single driver deployment

- **Ensure compatibility with HP PCL5 and HP postscript emulation print drivers.** The print drivers accommodate the majority of general office color and black-and-white printing on HP postscript emulation and HP PCL5-enabled HP LaserJet printers, MFPs, and digital copiers. Deploying just one driver for your entire printing environment lets you reduce IT intervention and eliminate the possibility of print driver incompatibilities for end-users.
- **Print from new HP LaserJet printers.** Support new HP LaserJet printers and MFPs automatically, without having to deploy new drivers.

## Easy to manage

- **Improve security and control.** HP Managed Print Policies (MPPs) allow your IT staff to limit end-user network access to certain printers or features (such as color). HP's intuitive setup tools make it easy to implement HP MPPs and customize the print environment. When enabled, HP MPPs can prevent users from overriding or circumventing settings by downloading a new version of the driver.
- **Create HP Managed Printer Lists (MPLs).** Easily create HP MPLs that help define and manage lists of printers with setup tools. Import printer lists from HP Web Jetadmin and access HP Print Server Appliance or Novell print shares.
- **Make it simple to find HP printing devices.** HP MPLs with optional HTML views (including maps) make it even easier for users to find listed devices. The lists can be accessed centrally or distributed to clients using the driver, and may include any networked HP printer, MFP, or digital copier. Because lists are updated in real time, users can always access available devices—with no intervention from IT.
- **Enjoy advanced printer installation options.** Choose discovery mode to allow end-users to discover and access new devices, or static mode to allow the driver to be associated with a print queue without the discovery mode.
- **Reduce support costs for IT administrators.** The print driver features easy driver installation with just a few clicks and support for the Windows Add Printer Wizard feature.

## Easy to use

- **Get easy access to advanced printer options.** Enjoy enhanced features such as print task quick sets for frequently printed jobs, n-up printing to increase the number of pages printed per sheet, job storage, stapling, booklet printing, and watermark printing. You can also choose input trays and output destinations.
- **Enable speedy printing.** Users can create custom profiles such as home, work, or travel, to quickly access the printer of their choice. Use *Profile* to access the most recently used printers from a drop-down list.
- **Simplify business printing.** The driver enables effortless printing for all users, including those on the go. Use the driver to print from a conference room, a satellite office, or remotely from a home office.

## Widely compatible

- **Access the driver from any application.** Select *Print* from the *File* menu of any Windows application to use the driver—users no longer have to go outside their application to connect to a supported printer.<sup>1</sup>
- **Depend on industry-standard HP driver technology.** Backed by HP consistency and reliability, the enhanced user interface is similar to HP LaserJet premium print drivers, making printing easier than ever.
- **Enjoy one driver for directly connected and networked printers.** Get convenient, high-quality customized printing to local and networked printers via wired connections, as well as Bluetooth®, network print share, and 802.11 wireless connections. There's no need to configure a specific print driver or network print path to print directly to network printers.

**Download the driver for free.** To obtain the free driver, go to [www.hp.com/go/universalprintdriver](http://www.hp.com/go/universalprintdriver).

<sup>1</sup> HP Universal Print Driver Series for Windows supports Microsoft® Windows 2000, XP, XP Professional x64, and 2003 Server (32/64 bit); for Windows 98, ME, and NT 4.0 support, use the HP Mobile Printing for Notebooks driver.



# It's about access. Empower end-users and your IT staff with the HP Universal Print Driver Series for Windows.

## Easy for everyone in the office

Install the driver on any Windows PC with just a few clicks to enable users to print to any HP printing device with HP PCL5 or HP postscript emulation. Faster and far less complicated than finding multiple specific print drivers, HP Universal Print Driver Series for Windows is always accessible from Windows applications.

Designed with the future in mind, the driver provides access to most of the advanced printing features found in the next generation of HP business printers. The driver is bundled with select HP and Compaq notebook and tablet PCs and is available as a free download from the HP Web site at [www.hp.com/go/universalprintdriver](http://www.hp.com/go/universalprintdriver).

## Simple, managed corporate printing

Enterprise businesses have a huge investment in their print resources, and providing and managing end-user access to these resources can be a full-time job for busy IT administrators. While businesses may have a number of different printing and imaging devices with capabilities ranging from black-and-white laser printing to color laser printing to color photo printing on premium glossy paper, it is often undesirable to offer all of these capabilities to all users. At the same time, productivity stalls when users don't have access to the features they truly need, and performing individual driver installations can monopolize an IT staff.

The HP Universal Print Driver Series for Windows can alleviate such headaches with one driver for all HP PCL5 or HP postscript emulation-enabled printers. The HP Managed Print Policies tool allows IT administrators to easily define printing and device discovery privileges as required for their environment. With HP MPPs, IT administrators can control access to capabilities such as color printing and media type use.

The HP Managed Printer Lists tool makes driver configuration even easier with intuitive setup tools. Printer lists may be imported from HP Web Jetadmin and HP Print Server Appliance or Novell print shares. With optional HTML views or mappings, lists of printing devices can be easily updated and defined for different users in different environments.

## Effortless general office printing

In many cases, corporate users print only basic office documents and rarely change printer settings. The HP Universal Print Driver Series for Windows is ideal for these users: with only a few clicks they can easily print to any HP printing device with HP PCL5 or HP postscript emulation.

Using HP's Managed Printer List option, IT staff can configure and designate printers for simple access by corporate and mobile users via the driver.

## Simple network printing for mobile workers

HP recognized that the proliferation of portable PCs meant more and more people would be working in multiple locations. To make the most of the mobile work experience, users would have to be able to access network printing resources. The biggest obstacle to accessing printing resources has been print driver support. Even though portable PCs provide unprecedented location flexibility, they are typically configured with driver support for a limited number of printers. HP developed a solution: HP Universal Print Driver Series for Windows.

### Download the free HP Universal Print Driver Series for Windows, version 1.0 (HP PCL5 or HP postscript emulation editions)

Go to: [www.hp.com/go/universalprintdriver](http://www.hp.com/go/universalprintdriver)

#### Support and information

Go to: [www.hp.com/support/universalprintdriver](http://www.hp.com/support/universalprintdriver)

#### Compatibility

Supports Windows 2000, XP, XP Professional x64, and 2003 Server (32/64 bit); for Windows 98, ME, and NT 4.0 support, use the HP Mobile Printing for Notebooks driver

#### Size

12 MB

#### Supported printers

##### HP LaserJet/Color LaserJet

1150 series	2550 series	4100 series	4600 series	8150mfp
1160 series	301x series	4100mfp	4610 series	9000 series
1200 series	3020 series	4200 series	4650 series	9000mfp
1300 series	3030 series	4240 series	4730mfp series	9040mfp
1320 series	3200 series	4250 series	5000 series	9050 series
2100 series	3300 series	4300 series	5100 series	9050mfp
2200 series	3300mfp	4345mfp	5500 series	9055mfp
2300 series	3700 series	4350 series	5550 series	9065mfp
24x0 series	4000 series	4500 series	8000 series	9500 series
2500 series	4050 series	4550 series	8150 series	9500mfp

##### HP Business Inkjet/Officejet

2250 series	2300 series	2600 series	3000 series
2280 series	2500CM series	2800 series	9100 series all-in-one

#### Supported by HP postscript emulation driver edition only

HP Color LaserJet 2500 and 2550 series printers, 2800 series all-in-one; HP Business Inkjet 2800 series printer

Bluetooth is a trademark owned by its proprietor and used by Hewlett-Packard Company under license. Microsoft, Windows, Windows NT, and Windows XP are U.S. registered trademarks of Microsoft Corporation.

© Copyright 2005 Hewlett-Packard Development Company, L.P.

The information contained herein is subject to change without notice. The only warranties for HP products and services are set forth in the express warranty statements accompanying such products and services. Nothing herein should be construed as constituting an additional warranty. HP shall not be liable for technical or editorial errors or omissions contained herein.

4AA0-0755ENUC, 09/2005, Rev. 1.2

