



HP Photosmart Digital Cameras Real Life Technologies

HP Design Gallery



What is HP Design Gallery?

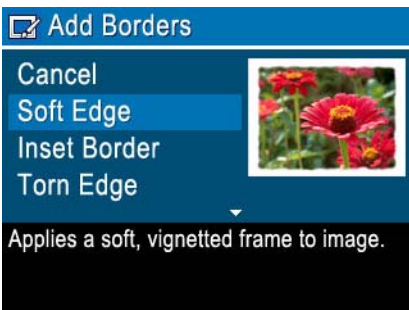
HP Design Gallery is an exciting new way to use your HP Photosmart camera to turn your photos into real works of art – ready to print and share – and do it right on your camera. Using Design Gallery on your HP Photosmart Camera you can apply a wide range of exciting effects – ranging from a color coordinated frame, such as shown in the image to the upper left, to a creative effect such as the kaleidoscope effect shown here. You can even apply a *slimming* effect that subtly slims subjects in the center of the image!



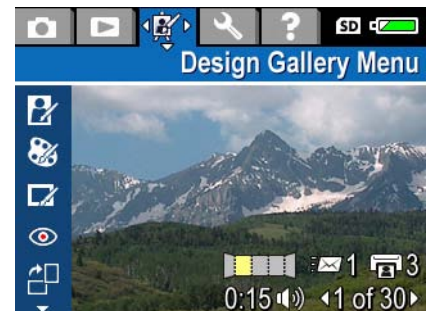
Perhaps the most exciting part of HP Design Gallery is that it is simple to use and, because the camera automatically picks default colors that are designed to compliment the photo to which it is being applied, you get great results right away. Of course, the original photo is preserved, so you can create several effects or even apply multiple effects to an image.

How does HP Design Gallery Work?

Using HP Design Gallery is simple. Simply select the Design Gallery menu when reviewing an image on the camera and choose the effect you want to apply. The default settings for many effects are based upon analysis of the actual photo you



are working with, but of course you can many of the parameters to tune the effect to achieve your desired goal. You can also crop the photo to apply the effect to just a portion of the image.



Once you have one of the many effects a preview of the image is shown on the camera LCD and you can adjust various effect parameters. To the right is an example of a 'torn edge border' screen on the camera. Using the camera buttons you can change the color of the border (in this example, the camera has chosen a white border as a default for this image), the intensity of the color (saturation) and the size of the boarder. When you press OK the new image is stored on your memory card – preserving the original. In fact, by applying effects to images that have already had effects applied, you have nearly unlimited creativity right on the camera.

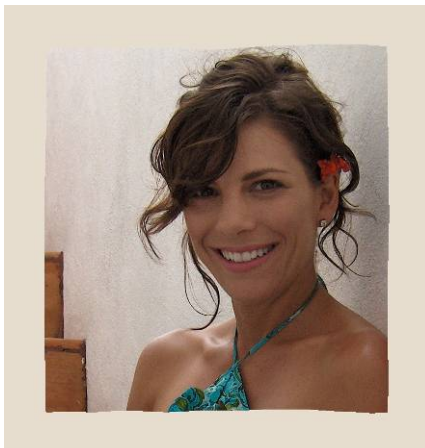


What effects can I apply?

The Design Gallery effects depend on the camera model. The following images show just a few of the possible effects available on the R927 camera. Remember the effects are nearly unlimited since you can apply an effect on top of another effect. For instance, you can crop an image, remove red-eyes, apply a slimming filter, then solarize and finally apply a burn edge border. Each step along will create a new image – and the original is preserved.



Original image



Torn Edge Border



Watercolor



Original image



Antique



Solorize



Soft edge border



Burnt edge border



Slimming

With HP Design Gallery you can get professional artistic effects without learning a new computer program. Brilliantly Simple!

© Copyright 2006 Hewlett-Packard Development Company, L.P. The information contained herein is subject to change without notice and is provided "as is" without warranty of any kind. The warranties for HP products and services are set forth in the express warranty statements accompanying such products and services. Nothing herein should be construed as constituting an additional warranty. HP shall not be liable for technical or editorial errors or omissions contained herein.