



## HP POWER MANAGER V2.0

Powered by Verdiem



### You've got the power

Gain control of your PC's energy use with this easy-to-use, pre-loaded desktop application. HP Power Manager consolidates several power settings into one convenient tool. Get real time reporting and see how various settings may reduce the energy consumed by your PC and the potential savings you might realize over time. Now you have the power to customize the optimal mix of performance and conservation that's right for you.

### Waste not, want not

No one understands your needs better than you. HP Power Manager has been specifically designed to enable you to configure how your PC energy resources are utilized. Reduce your PC's energy consumption without interfering with your productivity.

- Switch your PC to a lower power state after a designated amount of idle time to save energy.
- Manage your PC power usage with work time and non-work time settings.
- Receive recommendations with the scroll bar on how to implement a more aggressive energy conservation strategy.

### Predict cost and calculate savings

Managing power saving settings on one PC may not seem to make a big difference, yet it adds up when many people across an organization make similar adjustments. These small changes in behavior can translate into big savings on your power bill and the environment.

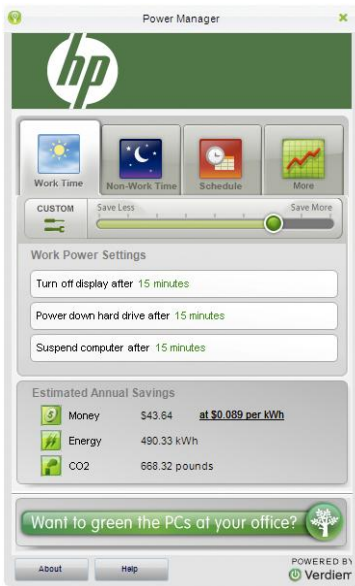
- Input your energy cost in the form of price per kilowatt hour and HP Power Manager will advise you how much a certain power setting may reduce your energy bill.
- Power savings are translated into environmental savings equivalencies such as kWh and CO<sub>2</sub> footprint so you can see how your conservation affects the world around you.
- Find estimated cost savings for both your PC and monitor in your currency.<sup>1</sup>

### Designed with the environment in mind

HP is committed to leading the industry with energy efficient products and ideas. HP Power Manager is another example of how we can help you keep more 'green' in your wallet by helping reduce overall energy costs.

**HP Power Manager V2.0 is available on a full range of HP Products.**

# HP POWER MANAGER - USER GUIDE



## Work or Non-Work Tab

- Set up separate profiles for Work Time and Non-Work Time.
- HP Power Manager provides easy access to pre-set settings with the convenient slider bar control.
- Customize the reporting to reflect your local energy costs.
- HP Power Manager controls when the PC:
  - Shuts down the display
  - Spins down the hard drives
  - Suspends your system into Sleep Mode
- The estimated annual energy savings are automatically calculated based on the power settings you select. Your energy savings are shown in:
  - Your local currency (as defined by your PC's regional settings)
  - Energy Units
  - Pounds of CO2

## Customize Your Profile

- Further tailor your work and non-work time settings by defining custom timing schedules which reflect your unique requirements.
- Allows you to define the exact amount of idle time allowed before power-saving modes are implemented.
- Set-up custom profiles for both Work Time and Non-Work Time.



## Schedule Tab

- No one knows your work time better than you. You define the Work Time schedule; HP Power Manager will calculate the Non-Work Time schedule.



1. Estimated cost savings based on your currency and number format based on your PC's regional settings.

Power savings calculations shown were determined based on internal testing. The PCMark 05 benchmark was used to determine productivity and peak usage energy consumption. Customer results will vary based on variables that include percentage of time PCs are in standby, idle, productivity, and peak usage. Component manufacturing variability and cost of electricity will also affect the savings a customer may see. HP advises customers to test PC systems with new power savings features in their environment to determine potential savings. Environmental comparisons were calculated based on factors from the World Resources Institute GHG Protocol ([www.ghgprotocol.org/outbind://20/www.ghgprotocol.org](http://www.ghgprotocol.org/outbind://20/www.ghgprotocol.org)) and the U.S.-Climate Technology Cooperation Gateway (U.S.-CTC) ([www.usctcgateway.gov/tool-outbind://20/www.usctcgateway.gov/tool](http://www.usctcgateway.gov/tool-outbind://20/www.usctcgateway.gov/tool).)"

© Copyright 2008 Hewlett-Packard Development Company, L.P. The information contained herein is subject to change without notice. The only warranties for HP products and services are set forth in the express warranty statements accompanying such products and services. Nothing herein should be construed as constituting an additional warranty. HP shall not be liable for technical or editorial errors or omissions contained herein.

Microsoft and Windows are U.S. registered trademarks of Microsoft Corporation. Windows Vista is either a registered trademark or trademark of Microsoft Corporation in the United States and/or other countries.

To learn more, visit [www.hp.com](http://www.hp.com)

4AA0-xxxxENW, February 2008

