



# Product End-of-Life Disassembly Instructions

**Product Category:** Monitors and Displays

**Marketing Name / Model**

[List multiple models if applicable.]

HP ZR2740w 27-inch LED Backlit IPS Monitor

Name / Model #2

Name / Model #3

Name / Model #4

Name / Model #5

**Purpose:** The document is intended for use by end-of-life recyclers or treatment facilities. It provides the basic instructions for the disassembly of HP products to remove components and materials requiring selective treatment, as defined by EU directive 2002/96/EC, Waste Electrical and Electronic Equipment (WEEE).

## 1.0 Items Requiring Selective Treatment

1.1 Items listed below are classified as requiring selective treatment.

1.2 Enter the quantity of items contained within the product which require selective treatment in the right column, as applicable.

Item Description	Notes	Quantity of items included in product
Printed Circuit Boards (PCB) or Printed Circuit Assemblies (PCA)	With a surface greater than 10 sq cm	4
Batteries	All types including standard alkaline and lithium coin or button style batteries	0
Mercury-containing components	For example, mercury in lamps, display backlights, scanner lamps, switches, batteries	0
Liquid Crystal Displays (LCD) with a surface greater than 100 sq cm	Includes background illuminated displays with gas discharge lamps	1
Cathode Ray Tubes (CRT)		0
Capacitors / condensers (Containing PCB/PCT)		0
Electrolytic Capacitors / Condensers measuring greater than 2.5 cm in diameter or height		2
External electrical cables and cords		3
Gas Discharge Lamps		0
Plastics containing Brominated Flame Retardants weighing > 25 grams (not including PCBs or PCAs already listed as a separate item above)		0
Components and parts containing toner and ink, including liquids, semi-liquids (gel/paste) and toner	Include the cartridges, print heads, tubes, vent chambers, and service stations.	0
Components and waste containing asbestos		0
Components, parts and materials containing		0

EL-MF877-00

Template Revision B

Page 1

refractory ceramic fibers		
Components, parts and materials containing radioactive substances		0

## 2.0 Tools Required

List the type and size of the tools that would typically be used to disassemble the product to a point where components and materials requiring selective treatment can be removed.

Tool Description	Tool Size (if applicable)
Description #1 Hand	
Description #2 Slotted Screwdriver	
Description #3 Philips Screwdriver	
Description #4 Hex Socket Screwdriver	
Description #5	

## 3.0 Product Disassembly Process

3.1 List the basic steps that should typically be followed to remove components and materials requiring selective treatment:

1. Please refer to the attached file for disassembly process
2. Remove the four screws from bracket
3. Open front cover
4. Be careful the line, and remove the three screws from key board
5. Remove all the tapes from main bracket
6. Remove the screws from left and right side of the bracket
7. Pressure LVDS connector on both sides and the pull out
8. Remove the screws from DVI connector
9. Remove the screws from main board and converter board
- 10.
- 11.

3.2 Optional Graphic. If the disassembly process is complex, insert a graphic illustration below to identify the items contained in the product that require selective treatment (with descriptions and arrows identifying locations).

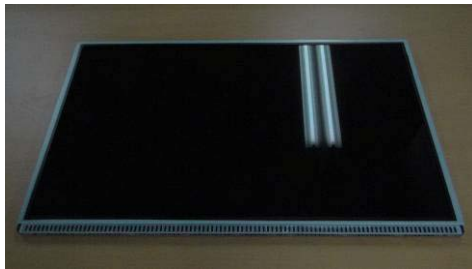
# Method of LED disassembly on 27W

## 1. Method of disassembly on LM270WQ1-SDDA

2011.01.03



# Method of LED disassembly on LM270WQ1-SDDA



**Bare LCM**



**Step1 : Remove the Screw (4ea)  
Source PCB**



**Step2 : Remove the Cover Shield**



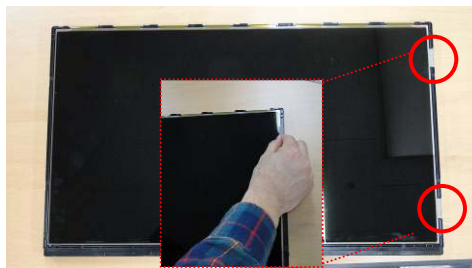
**Step3 : Dismantle the FFC Connector(2ea)**



**Step4 : Separate Control PCB**



**Step5 : Dismantle the Case Top(Down)**



**Step6 : Remove the ITO Tape (2ea)**



**Step7 : Separate Board Ass'y**

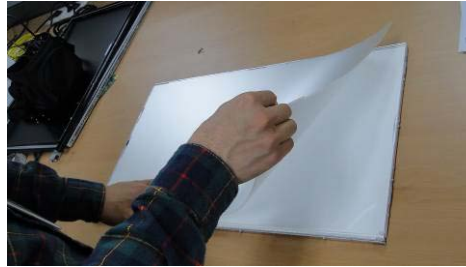


**Step9 : Remove the Guide panel  
screw (6ea)**

# Method of LED disassembly on LM270WQ1-SDDA



**Step10 : Disassemble the Guide panel**



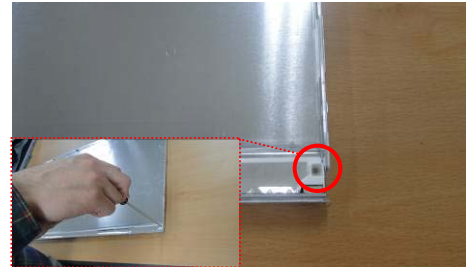
**Step11 : Remove the Sheet**



**Step12 : Remove the LGP**



**Step13 : Remove the reflector**



**Step14 : Remove the guide light screw  
(2ea)**



**Step15 : Remove the tape (2ea)**



**Step16 : Remove the tape**



**Step17 : Remove the Black tape**



**Step18 : Separate light guide (Back)**



# Method of LED disassembly on LM270WQ1-SDDA



**Step19 : Separate light guide (Front)**



**Separated**



**Step20 : Remove the LED wire Assy**



**Separated**



**Step21 : Remove the LED bar Screw**



**Step22 : separate the LED bar**



**Dissembled**

# ZR2740 ME disassembly instruction photos

**Tatung  
ME team  
3/28/11'**

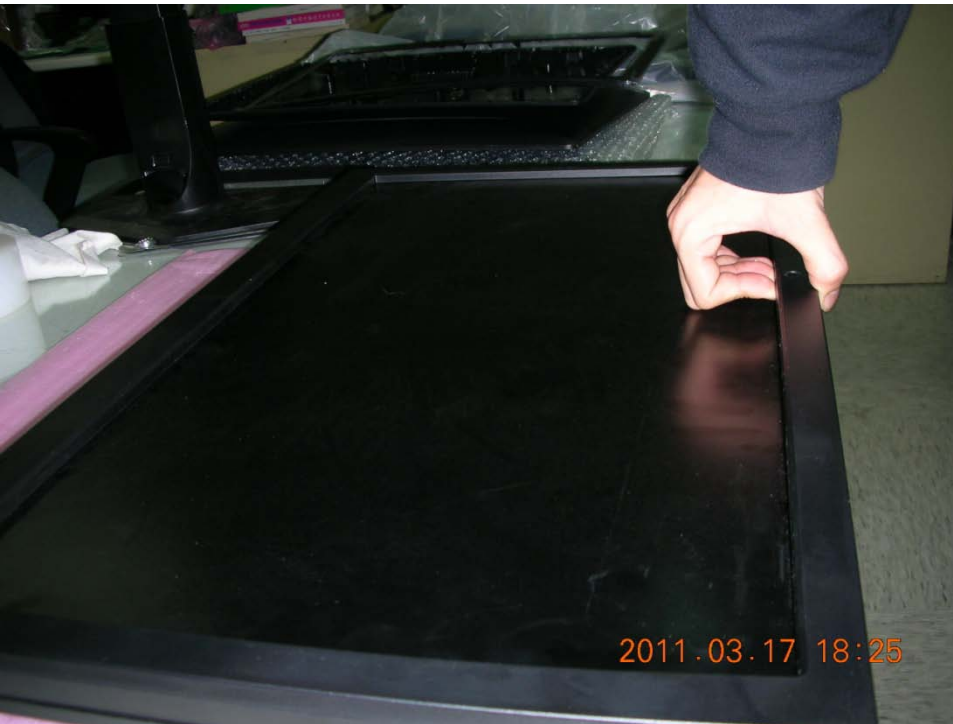
J.k.Liao

# Remove the four screws form bucket

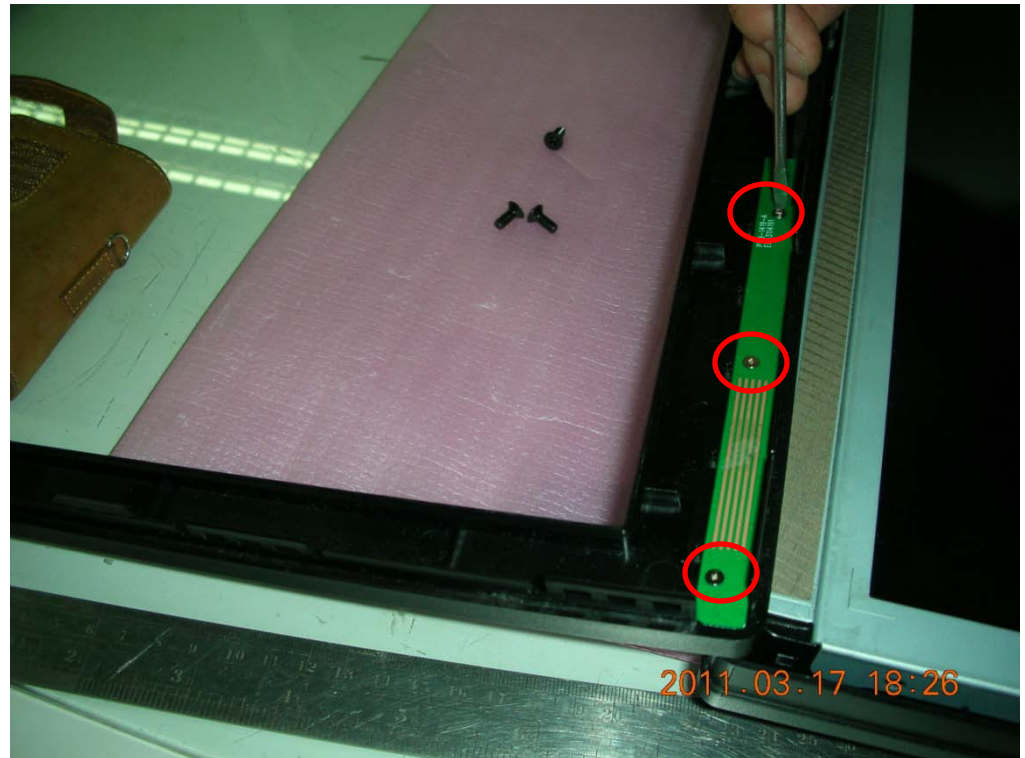




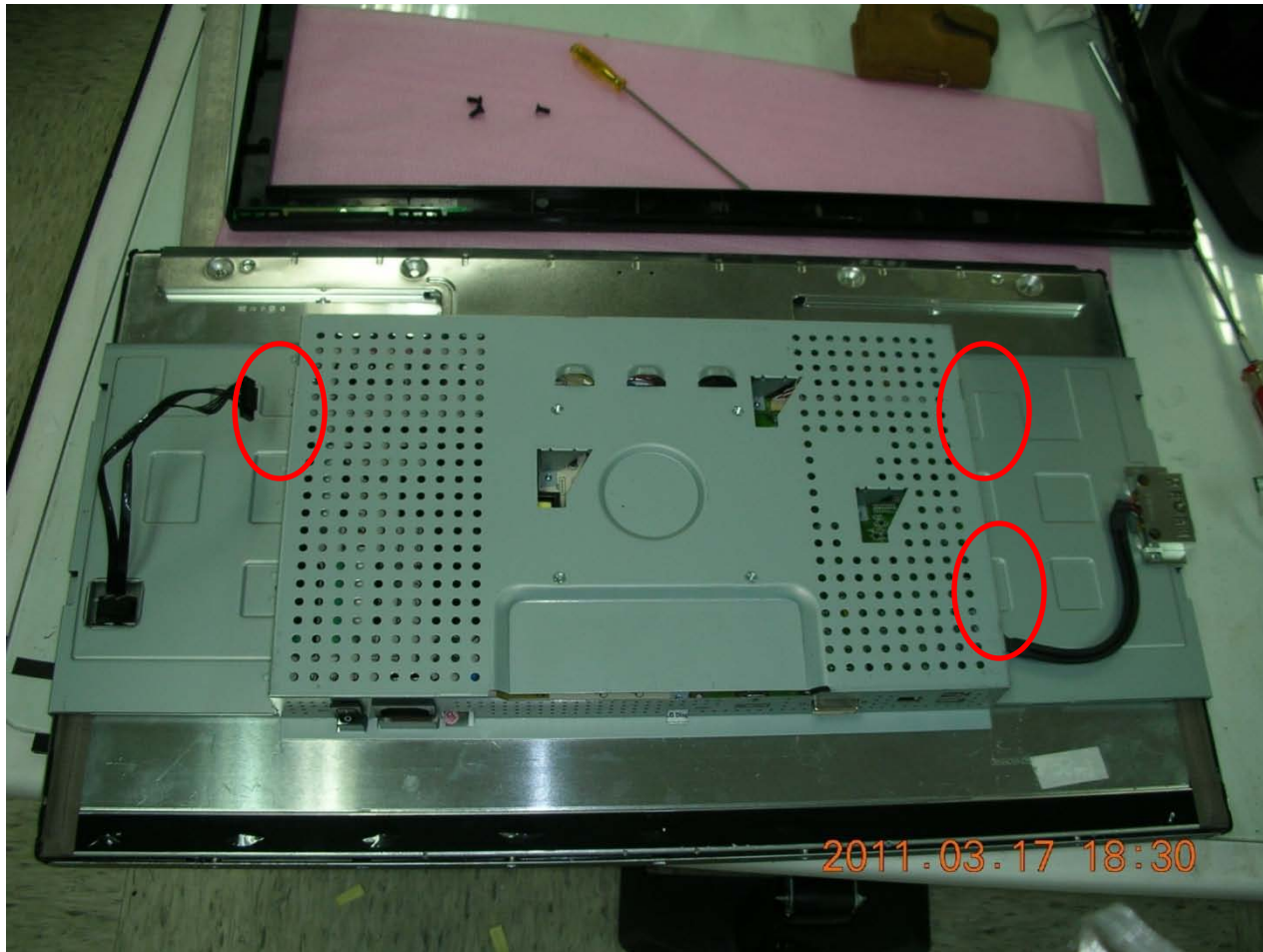
# Open the front cover



Be careful the line , and remove the three screws  
form key board.



# Remove all the tapes from main bracket.





# Remove these three tapes from main bracket.

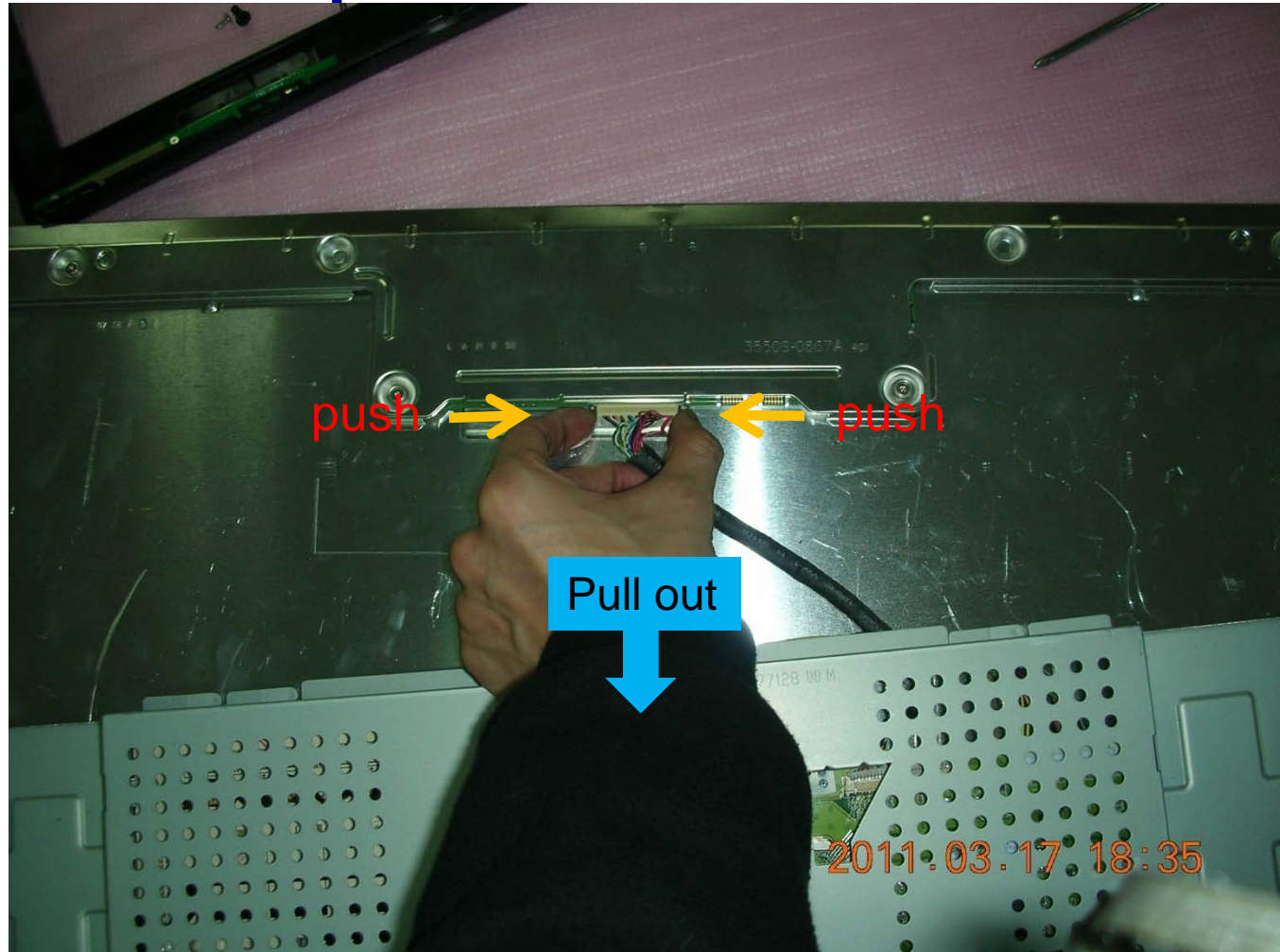


# Remove the screws from left and right side.





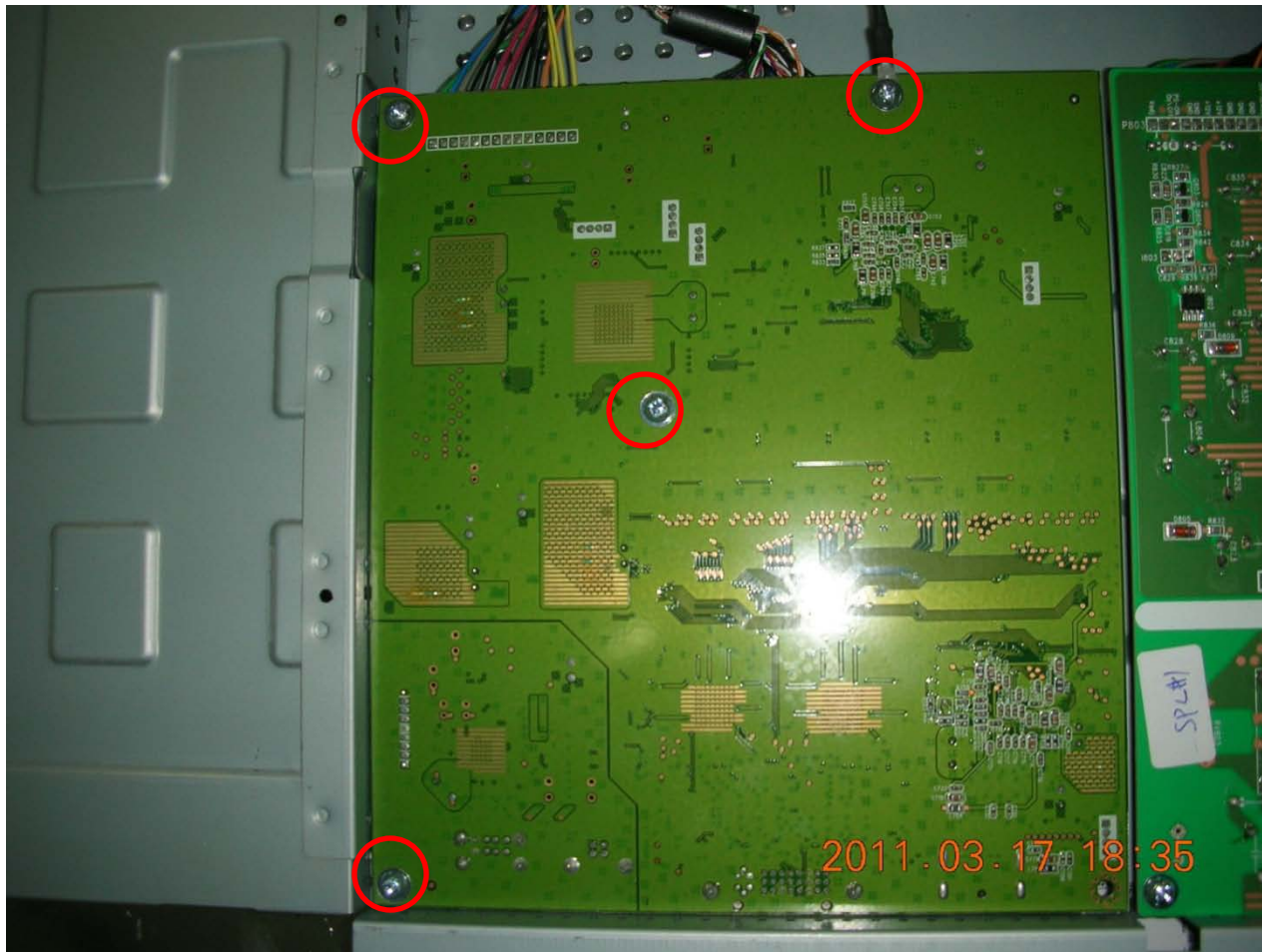
# Pressure on both sides, then pull out.



# Remove the screws from connector.



# Remove the screws from board.





# Remove the screws from board.

