



Product End-of-Life Disassembly Instructions

Product Category: Personal Computers

Marketing Name / Model
 [List multiple models if applicable.]

HP Compaq 8200 Elite USDT Business PC

Name / Model #2

Name / Model #3

Name / Model #4

Name / Model #5

Purpose: The document is intended for use by end-of-life recyclers or treatment facilities. It provides the basic instructions for the disassembly of HP products to remove components and materials requiring selective treatment, as defined by EU directive 2002/96/EC, Waste Electrical and Electronic Equipment (WEEE).

1.0 Items Requiring Selective Treatment

1.1 Items listed below are classified as requiring selective treatment.

1.2 Enter the quantity of items contained within the product which require selective treatment in the right column, as applicable.

Item Description	Notes	Quantity of items included in product
Printed Circuit Boards (PCB) or Printed Circuit Assemblies (PCA)	With a surface greater than 10 sq cm MB	1
Batteries	All types including standard alkaline and lithium coin or button style batteries CR 2032	1
Mercury-containing components	For example, mercury in lamps, display backlights, scanner lamps, switches, batteries 0	0
Liquid Crystal Displays (LCD) with a surface greater than 100 sq cm	Includes background illuminated displays with gas discharge lamps N/A	0
Cathode Ray Tubes (CRT)	N/A	0
Capacitors / condensers (Containing PCB/PCT)	N/A	0
Electrolytic Capacitors / Condensers measuring greater than 2.5 cm in diameter or height	adapter	1
External electrical cables and cords	adapter	1
Gas Discharge Lamps	N/A	0
Plastics containing Brominated Flame Retardants weighing > 25 grams (not including PCBs or PCAs already listed as a separate item above)	N/A	0
Components and parts containing toner and ink,	Include the cartridges, print heads, tubes, vent	0

including liquids, semi-liquids (gel/paste) and toner	chambers, and service stations. N/A	
Components and waste containing asbestos	N/A	0
Components, parts and materials containing refractory ceramic fibers	adaptor	4
Components, parts and materials containing radioactive substances	N/A	0

2.0 Tools Required

List the type and size of the tools that would typically be used to disassemble the product to a point where components and materials requiring selective treatment can be removed.

Tool Description	Tool Size (if applicable)
Description #1 Screw driver	T15
Description #2 Screw driver	T8
Description #3 Screw driver	T5
Description #4 Screw driver	PH 2
Description #5 Screw driver	T20

3.0 Product Disassembly Process

3.1 List the basic steps that should typically be followed to remove components and materials requiring selective treatment:

1. [Option parts] Remove the stand
2. [Option parts] Remove the port cover
3. [System] Remove the top cover
4. [System] Remove the optical drive
5. [System] Remove the hard drive
6. [System] Remove the optical drive cage
7. [System] Remove the front bezel
8. [System] Remove the SD card module
9. [System] Remove the hood sensor
10. [System] Power cable remove
11. [System] Remove the mini card cable
12. [System] Remove the front fan
13. [System] Front fan disassembly
14. [System] Remove the front I/O cage
15. [System] Remove the antenna
16. [System] Remove the CPU heat sink
17. [System] Remove the system board
18. [System] MXM card disassembly
19. [System] Remove the SODIMM / PCIe card
20. [System] Remove the speaker
21. [Adapter] Remove the cover
22. [Adapter] Remove the aluminum shielding
23. [Adapter] Remove the sheet metal shielding
24. [Adapter] Remove the capacitor (>2.5 cm in height, requiring selective treatment)
25. [Adapter] Remove the external cable (requiring selective treatment)
26. [Adapter] Remove the components containing ceramic fibers (requiring selective treatment)
27. [Adapter] Left the adapter printed wiring board (>10 cm², requiring selective treatment)

3.2 Optional Graphic. If the disassembly process is complex, insert a graphic illustration below to identify the items contained in the product that require selective treatment (with descriptions and arrows identifying locations).

[Option Parts]

1) Remove the stand

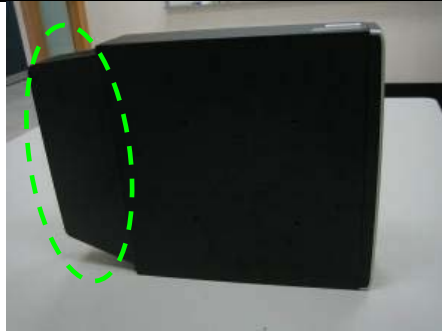


a) Prepare for stand removal



b) Remove the system from the stand

2) Remove the port cover



a) Prepare for port cover removal



b) Open the latch



c) Pull out the port cover



d) Remove the port from the chassis



e) Port cover disassembly complete

[System]

1) Remove the top cover



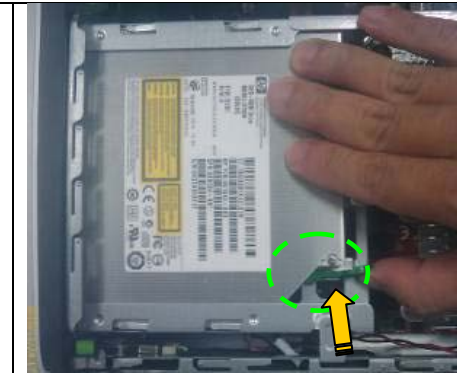
a) Loosen the latch screw

b) Remove the access panel



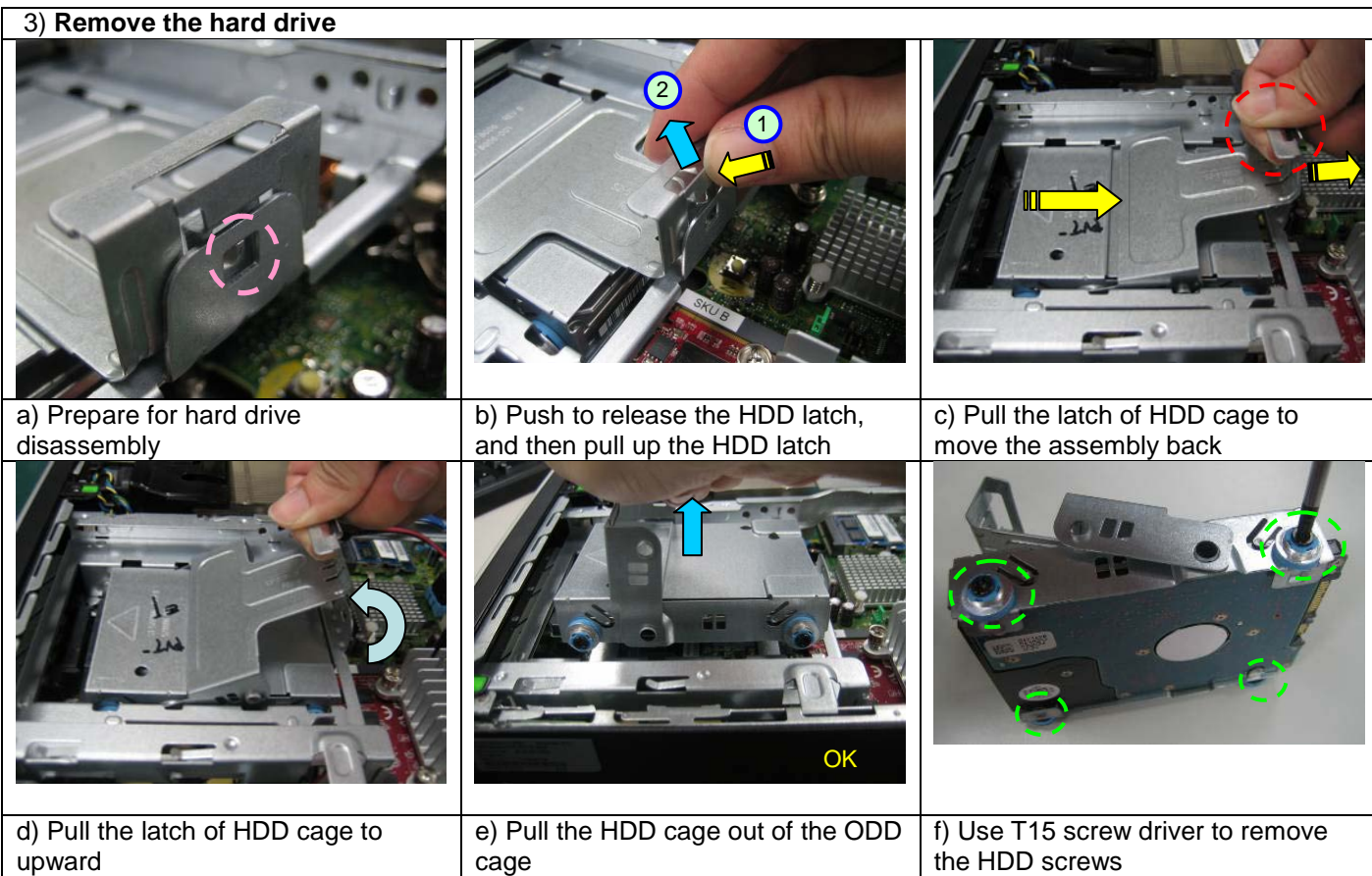
c) Access panel disassembly complete

2) Remove the optical drive




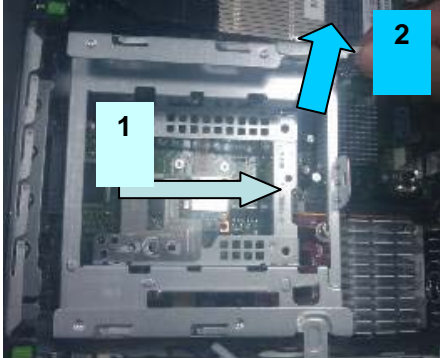


a) Disconnect the SATA cable

b) Push the ODD latch



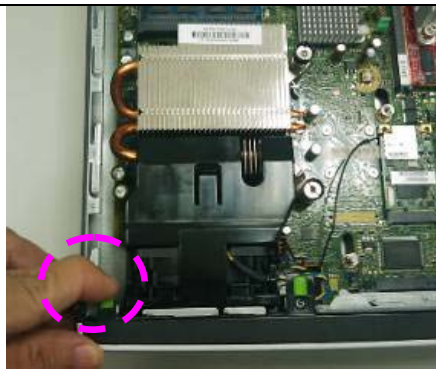
		
g) Pull HDD out of the bracket cage	h) HDD disassembly complete	

4) Remove the ODD cage		
		
a) Use T15 screw driver to remove the two screws		b) Release the spring latch
		
c) Remove the ODD cage from the base pan		

5) Remove the front bezel



a) Lift the bezel tabs

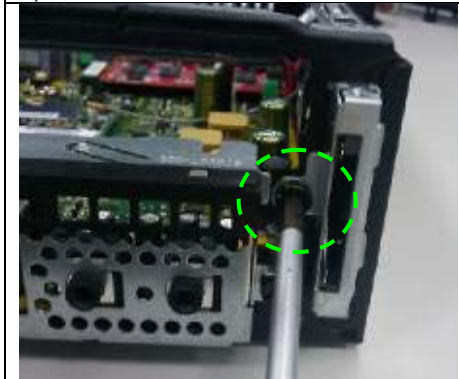


b) Rotate the bezel off the chassis

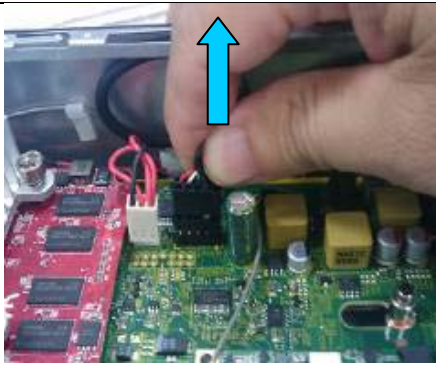


c) Bezel removal complete

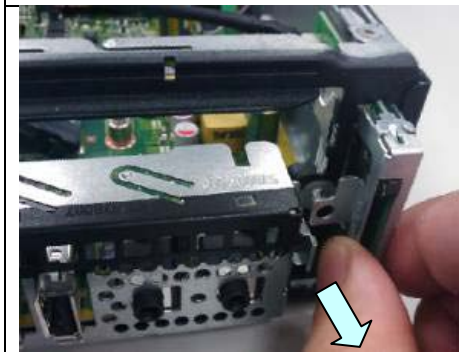
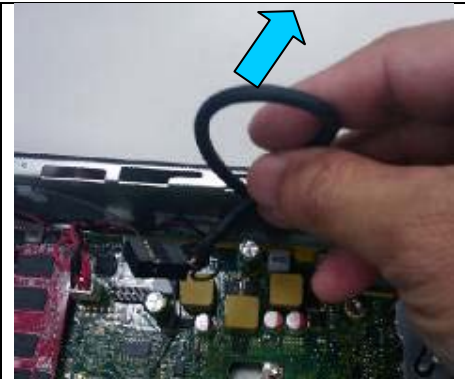
6) SD card module removal



a) Use T15 screw driver to disassemble the screw

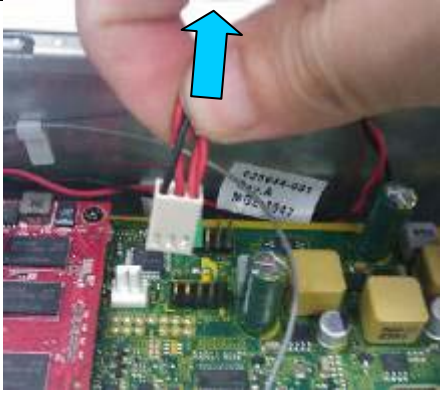


b) Disconnect the cable from the PCA



c) Pull the SD card reader module from the chassis

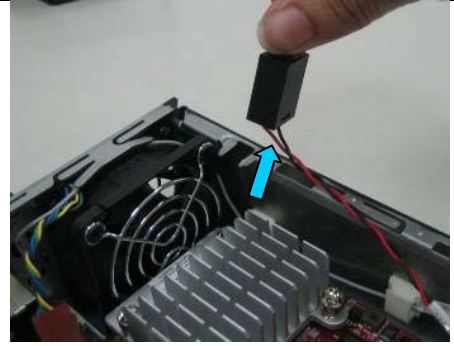
7) Hood sensor removal



a) Disconnect the connector from the PCA

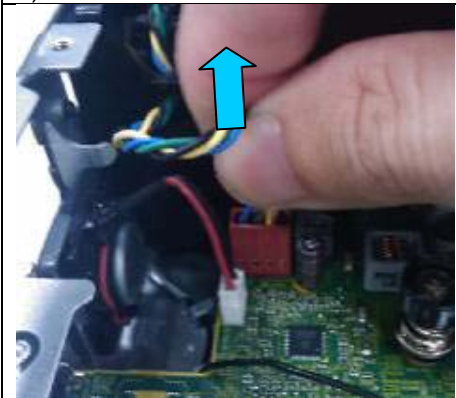
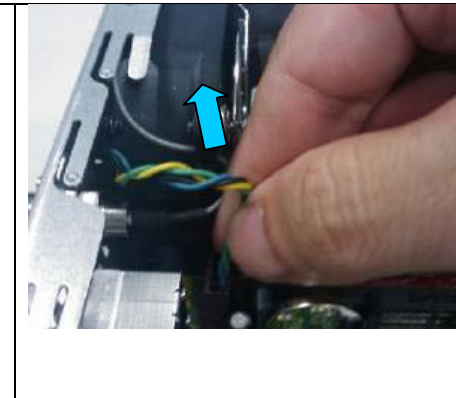
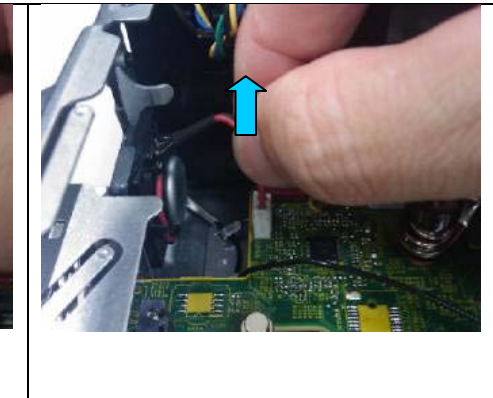


b) Slide the hood sensor out of the chassis

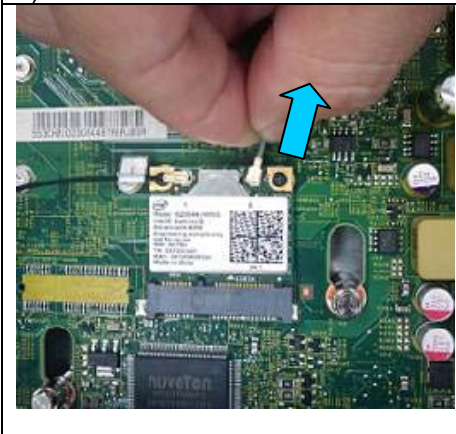




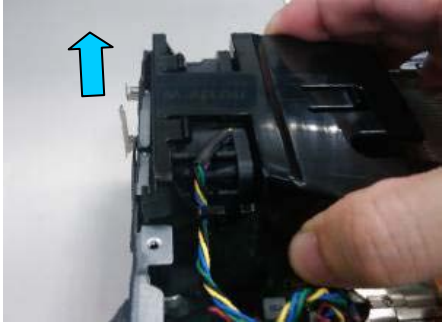

c) Remove the hood sensor from the chassis


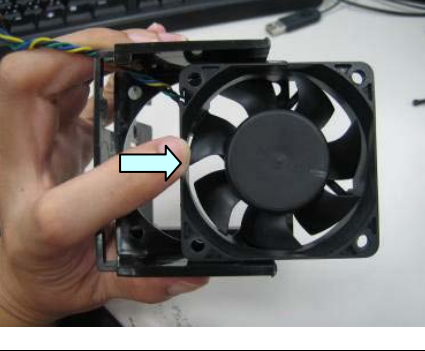
8) Power cable remove

 A close-up photograph showing a hand pulling a multi-colored cable (yellow, green, blue, red) away from a black plastic connector on a green printed circuit board (PCA). A blue arrow points upwards towards the connector.	 A close-up photograph showing a hand pulling a multi-colored cable away from a black plastic connector on a green printed circuit board (PCA). A blue arrow points upwards towards the connector.	 A close-up photograph showing a hand pulling a multi-colored cable away from a black plastic connector on a green printed circuit board (PCA). A blue arrow points upwards towards the connector.
<p>a) Disconnect the front fan connector from the PCA</p>	<p>b) Disconnect the rear fan connector from the PCA</p>	<p>c) Disconnect the speaker connector from the PCA</p>









9) Mini card cable remove

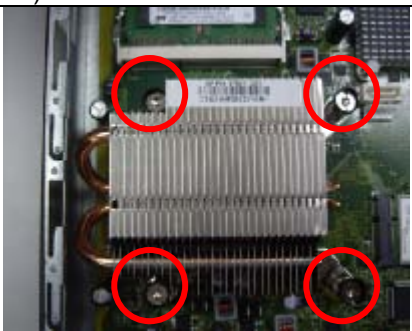
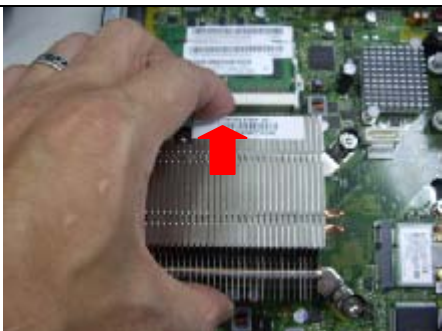
 A close-up photograph of a green PCB with a white antenna cable connector. A hand is shown pulling the cable away from the connector. A blue arrow points upwards towards the connector.	 A close-up photograph of a green PCB with a white antenna cable connector. A hand is shown pulling the cable away from the connector. A blue arrow points upwards towards the connector.	 A close-up photograph of the green PCB with the antenna cable connector. The word "OK" is written in blue in the upper right area of the image.
<p>a) Disconnect the antenna aux cable from the of PCIe card</p>	<p>b) Disconnect the antenna aux cable from the of PCIe card</p>	<p>c) Antenna cable disassembly complete</p>

10) Front fan removal		
		
<p>a) Lift the front fan from base pan</p>	<p>b) Front fan KIT disassembly complete</p>	

11) Front fan disassembly		
		
<p>a) Pull the fan rubber out to remove the front fan from the fan duct</p>	<p>b) Pull the front fan out of the fan duct</p>	

12) Remove front I/O cage		
		
<p>a) Use T15 screw driver remove screw</p>	<p>b) Press tab to disengage the I/O cage</p>	<p>c) Remove the I/O cage</p>

13) Remove Antenna		
		
a) Pull the front antenna main cable out of base pan	b) Use T8 screw driver to remove screws	c) Remove front antenna
		
d) Pull the antenna aux cable out of plastic clip	e) Remove the antenna aux cable from the chassis	f) Push the hook to remove the antenna cover from the chassis
		
g) Use T8 screw driver to remove screws.	h) Remove antenna	

14) Remove CPU heat sink		
		
a) Use slotted screwdriver to loosen heat sink screws	b) Lift heat sink from the system board	

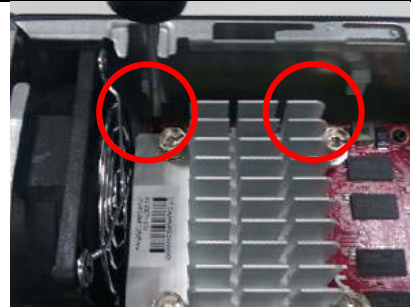
16) Remove system board



a) Use slotted screwdriver to remove 3 screws



b) Disconnect rear fan connector from PCA



c) Remove graphics card screws.



d) Slide the PCA forward



b) Lift rear of PCA up

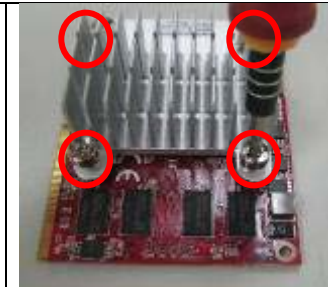


c) Remove PCA from chassis

17) MXM graphics card disassembly



a) Remove the MXM graphics card from PCA








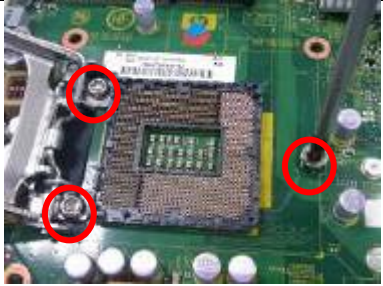

b) Use T15 screw driver to loosen the the MXM heat sink screws

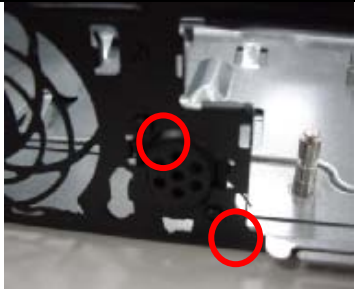



c) Remove MXM card heat sink from the card






d) Remove backplate from MXM card


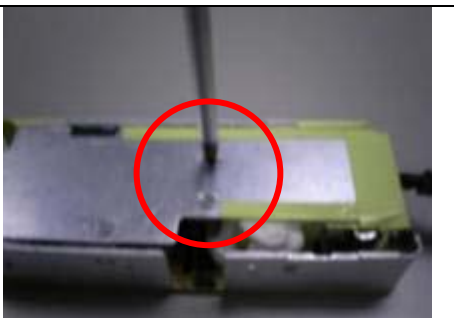
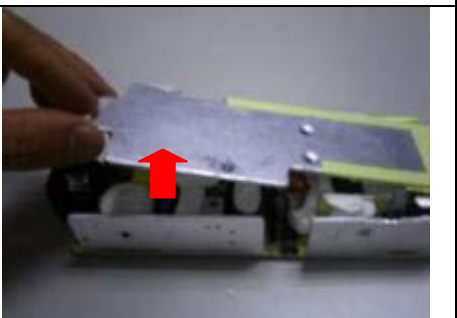
18) Remove SODIMM/ PCIe card		
		
a) Pull the latches away from each other, and then remove the SODIMM	b) Use a T5 screw driver to remove the PCIe card screws	c) Lift the PCIe card up at an angle and remove it from the connector
19) Remove CPU bracket/CPU		
		
a) Lift the lever, and then open the CPU bracket	b) Lift the CPU from the socket	c) Remove the back plate screws
		
d) Remove the back plate		
20) Remove speaker		

		
<p>a) Use a T8 screwdriver to remove the speaker screws</p>	<p>b) Remove the speaker</p>	

[AC Adapter]

<p>1) Remove covers</p>		
		
<p>a) Remove the four screws</p>	<p>b) Separate the adapter covers</p>	<p>c) Remove the bottom cover</p>

<p>2) Remove aluminum shielding</p>		
		
<p>a) Remove the electrical tape</p>	<p>b) Remove the bottom aluminum shielding</p>	<p>c) Use diagonal cutting plier to disconnect top aluminum shielding</p>

<p>3) Remove sheet metal shielding</p>		
		

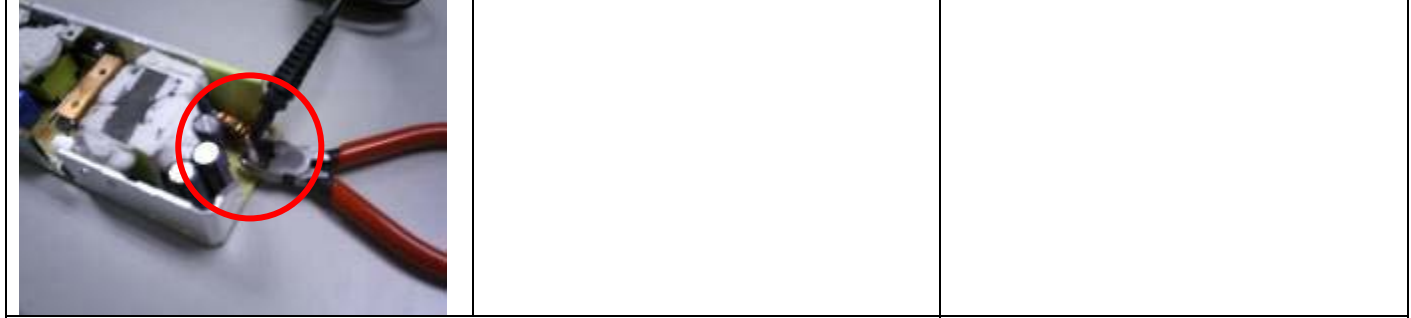
a) Remove the tinfoil	b) Remove the two screws	c) Lift sheet metal shielding
-----------------------	--------------------------	-------------------------------

4) Remove capacitor (>2.5cm in height)



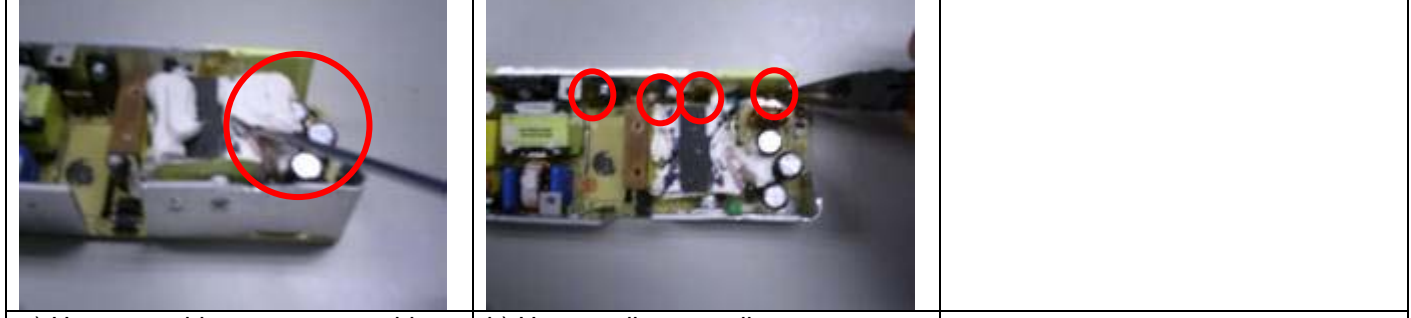
a) Use diagonal cutting plier to cut capacitor (> 2.5cm in height)

5) Remove external cable



a) Use diagonal cutting plier to remove external cable

6) Remove components containing ceramic fibers



a) Use screwdriver to remove white thermal paste
 b) Use needle nose plier to remove four components with ceramic fibers

7) Left adaptor printed wiring board



a) Complete