



Product End-of-Life Disassembly Instructions

Product Category: Personal Computers

Marketing Name / Model

[List multiple models if applicable.]

HP Compaq 6280 Pro MT Business PC

Name / Model #5

Purpose: The document is intended for use by end-of-life recyclers or treatment facilities. It provides the basic instructions for the disassembly of HP products to remove components and materials requiring selective treatment, as defined by EU directive 2002/96/EC, Waste Electrical and Electronic Equipment (WEEE).

1.0 Items Requiring Selective Treatment

1.1 Items listed below are classified as requiring selective treatment.

1.2 Enter the quantity of items contained within the product which require selective treatment in the right column, as applicable.

Item Description	Notes	Quantity of items included in product
Printed Circuit Boards (PCB) or Printed Circuit Assemblies (PCA)	With a surface greater than 10 sq cms	2
Batteries	All types including standard alkaline and lithium coin or button style batteries	1
Mercury-containing components	For example, mercury in lamps, display backlights, scanner lamps, switches, batteries	
Liquid Crystal Displays (LCD) with a surface greater than 100 sq cm	Includes background illuminated displays with gas discharge lamps	
Cathode Ray Tubes (CRT)		
Capacitors / condensers (Containing PCB/PCT)		
Electrolytic Capacitors / Condensers measuring greater than 2.5 cm in diameter or height	Liteon 320W EPA power supply	5
	Acbel 320W EPA power supply	3
	Chicony 320W STD power supply	1
	Delta 320W EPA power supply	2
	Delta 320W STD power supply	1
	Bestec 320W STD power supply	3
	Bestec 320W EPA power supply	1
External electrical cables and cords		
Gas Discharge Lamps		

Plastics containing Brominated Flame Retardants weighing > 25 grams (not including PCBs or PCAs already listed as a separate item above)		
Components and parts containing toner and ink, including liquids, semi-liquids (gel/paste) and toner	Include the cartridges, print heads, tubes, vent chambers, and service stations.	
Components and waste containing asbestos		
Components, parts and materials containing refractory ceramic fibers		
Components, parts and materials containing radioactive substances		

2.0 Tools Required

List the type and size of the tools that would typically be used to disassemble the product to a point where components and materials requiring selective treatment can be removed.

Tool Description	Tool Size (if applicable)
Screwdriver	T-15
Micro shear	170II
Screwdriver	PH1
Description #4	
Description #5	

3.0 Product Disassembly Process

3.1 List the basic steps that should typically be followed to remove components and materials requiring selective treatment:

1. Remove the access panel.(see Figure 1 below)
2. Disconnect the cables from the fan duct and the board. Remove the system fan from the chassis (see Figures 2-6 below)
3. Remove the bezel ,optical drive, and hard drive from the chassis.(see Figures 7-11 below)
4. Remove the power supply from the chassis.(see Figures 12-13 below)
5. Remove the rear system fan from the chassis.(see Figures 14-15 below)
6. Remove the front I/O, power LED, and speaker from the chassis.(see Figures 16-18 below)
7. Remove the memory moduule from the system board.(see Figure 19 below)
8. Remove the heatsink and CPU from the system board .(see Figures 20-22 below)
9. Remove the battery from the system board.(see Figure 23 below)
10. Remove M/B from chassis.(see Figures 24-25 below)
11. Remove the optical drive lock and the hard drive lock from the chassis.(see Figures 25-26 below)
12. Remove the cable clip from the chassis.(see Figure 28 below)
13. Remove the fan from the fan duct.(from system fan see Figures 29-30 below)
14. Remove the fan guard from the fan.(see Figure 31 below)
15. Remove the rear fan guard from the fan.(the same as front fan see Figure 31 below)
16. Remove the power supply cover.(see Figures 32&33 below)
17. Remove the power supply PCA,and disconnect the power cables.(see Figure 34&35 below)
18. There are seven different possible power supplies in these computers. Use figures 36-42 to determine which power supply you have, and then remove the cables and electrolytic capacitors as shown in the appropriate figure.

3.2 Optional Graphic. If the disassembly process is complex, insert a graphic illustration below to identify the items contained in the product that require selective treatment (with descriptions and arrows identifying locations).

Figure 1 Remove the access panel:



Figure 2 Disconnect the cables from the fan duct

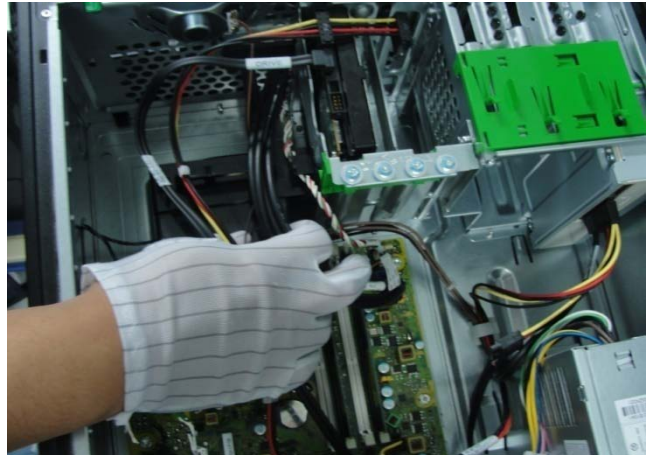


Figure 3 Disconnect the cables from the system board

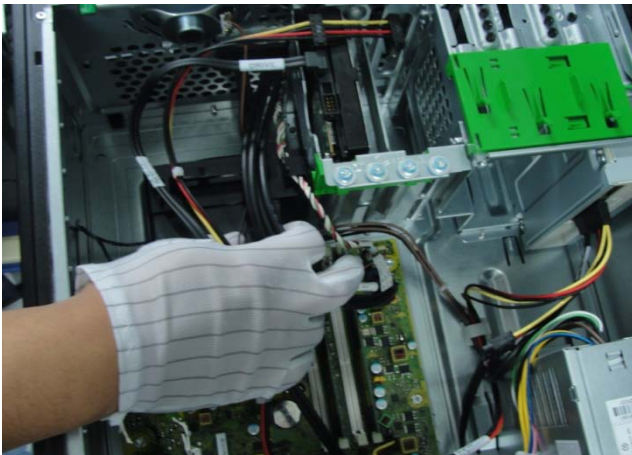


Figure 4 Remove the front system fan from the chassis



Figure 5 Disconnect the CPU power cable from the system board

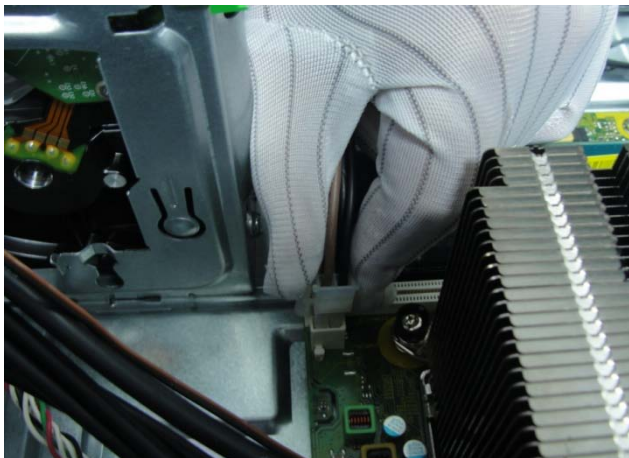


Figure 6 Disconnect other power supply cables from the system board



Figure 7 Disconnect the SATA cable from the optical drive



Figure 8 Disconnect the SATA cable from the hard drive

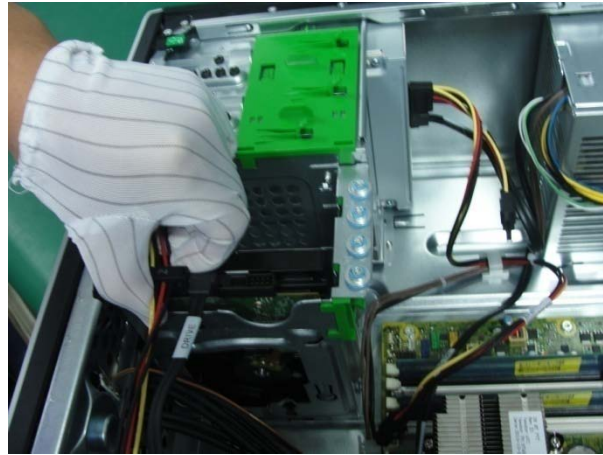


Figure 9 Remove the front panel



Figure 10 Remove the optical drive from the cage



Figure 11 Disconnect the SATA cable from the second hard drive (if applicable)



Figure 12 Remove the power supply screws



Figure 13 Remove the power supply from the chassis



Figure 14 Remove the rear fan screws

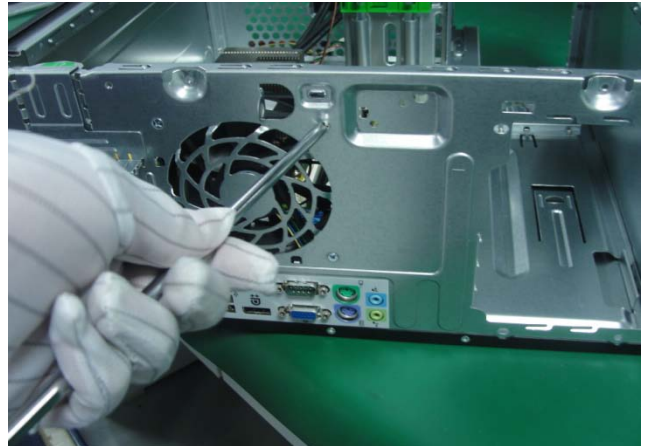


Figure 15 Remove the rear system fan



Figure 16 Remove the front I/O screw, and then remove it

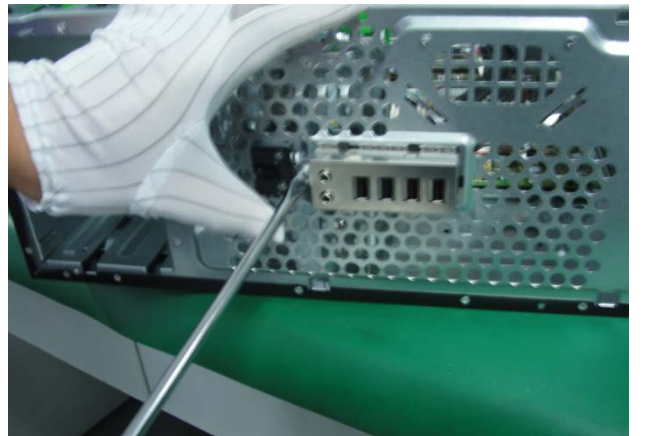


Figure 17 Remove the power LED cable



Figure 18 Remove the speaker screws, and remove it

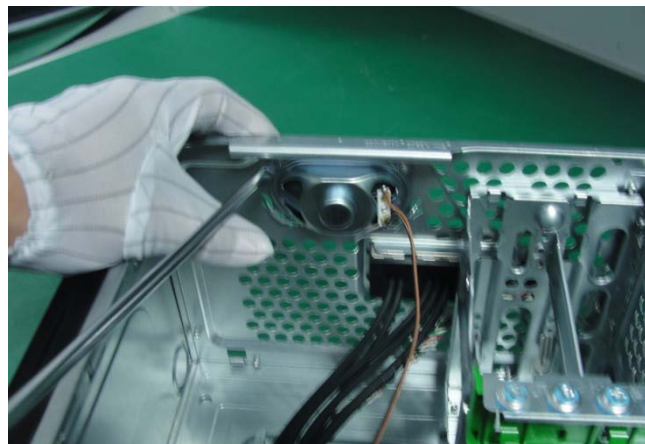


Figure 19 Remove the memory module from the board



Figure 20 Remove the screws and remove the heat sink



Figure 21 Rotate the handle and open it up



Figure 22 Remove the CPU from the board

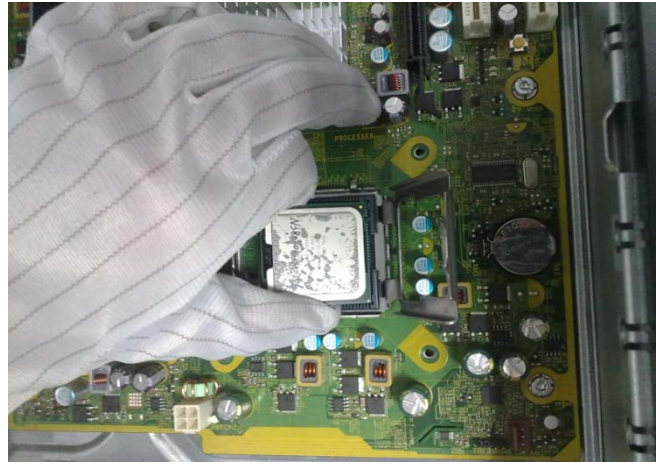


Figure 23 Remove the battery from the system board



Figure 24 Remove the system board screws



Figure 25 Remove the system board from the chassis

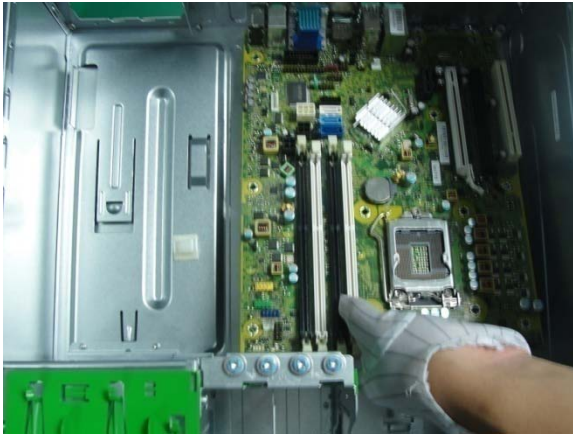


Figure 26 Remove the optical drive lock from the chassis



Figure 27 Remove the hard drive lock from the chassis



Figure 28 Remove the cable clip from the chassis



Figure 29 Remove the screws of fan from the fan duct

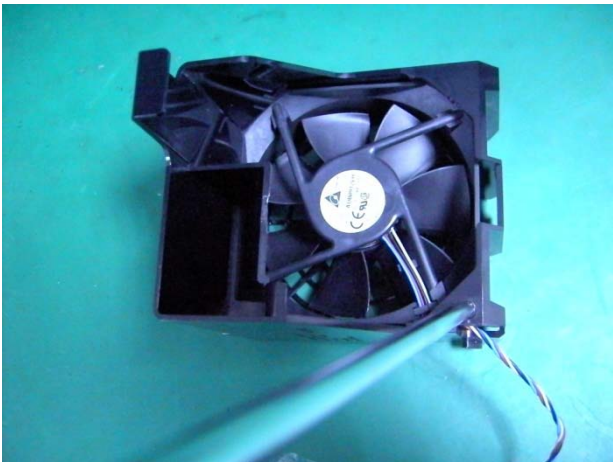


Figure 30 Remove the system fan from the fan duct



Figure 31 Remove the fan guard from the fan



Figure 32 Remove the screws from the power supply cover



Figure 33 Lift the cover off the power supply

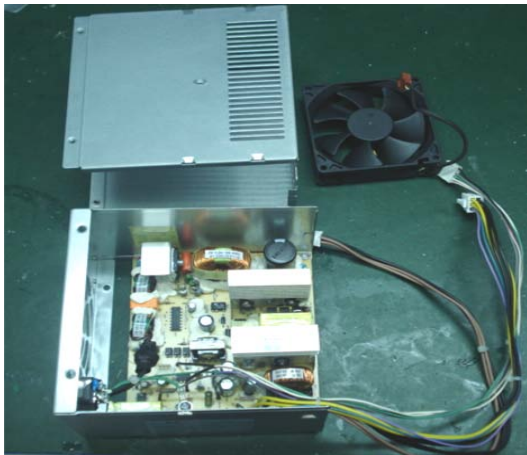


Figure 34 Remove the four screws from the board

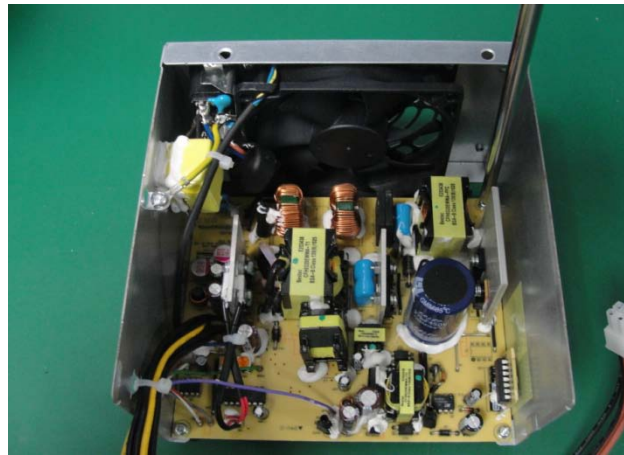


Figure 35 Remove the power supply PCA from the power supply chassis

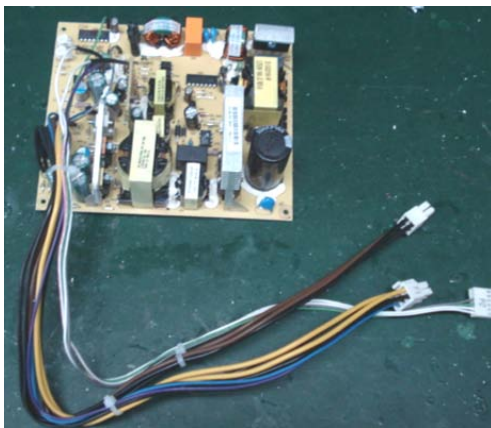


Figure 36 Remove the electrolytic capacitors (For Liteon 320W EPA PSU)

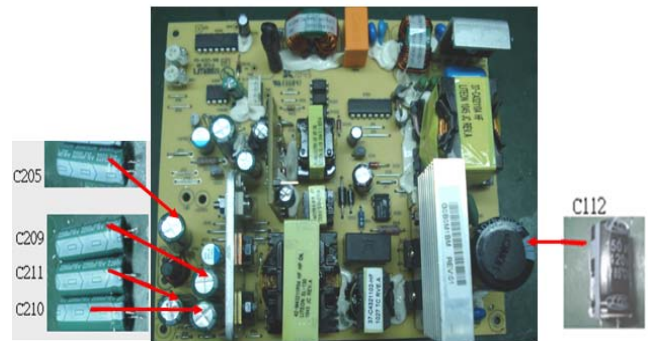


Figure 37 Remove the Electrolytic Capacitors (For Acbel 320W EPA)

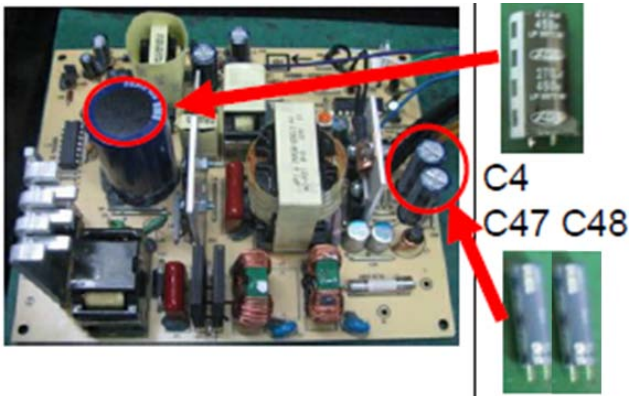


Figure 38 Remove the Electrolytic Capacitors (For Chicony 320W STD)



Figure 39 Remove the Electrolytic Capacitors (For Delta 320W EPA)

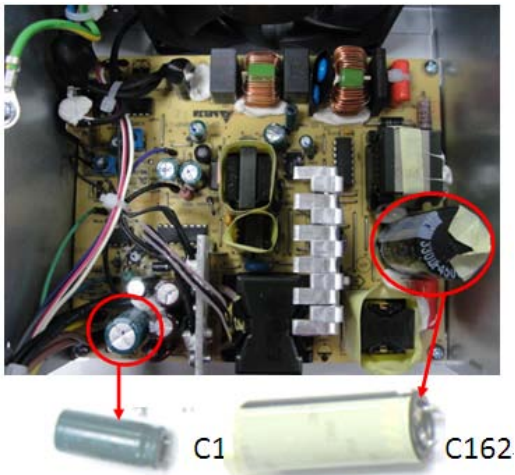


Figure 40 Remove the Electrolytic Capacitors (For Delta 320W STD)

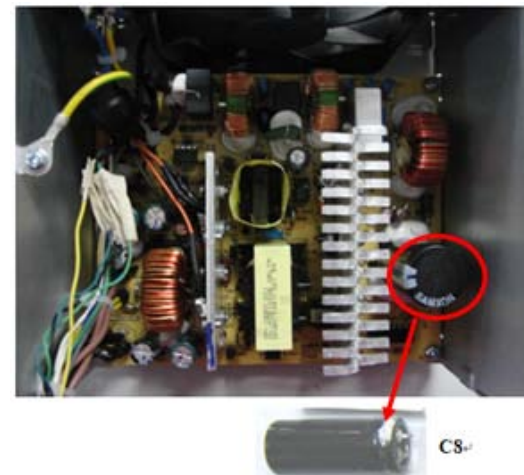


Figure 41 Remove the Electrolytic Capacitors (For Bestec 320W STD)

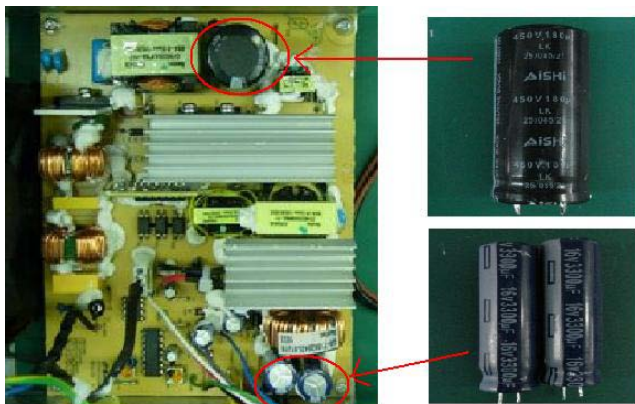
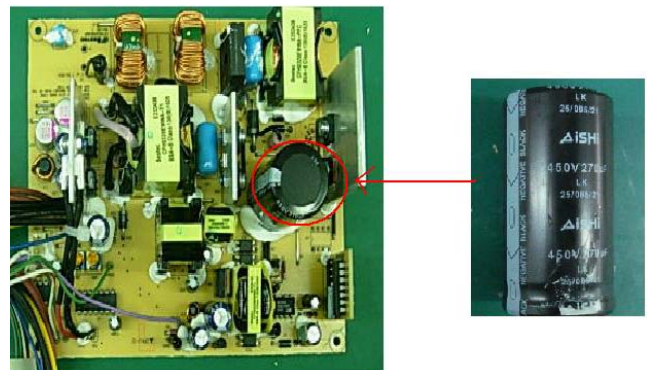


Figure 42 Remove the Electrolytic Capacitors (For Bestec 320W EPA)



S