



# Product End-of-Life Disassembly Instructions

**Product Category:** Personal Computers

**Marketing Name / Model**

[List multiple models if applicable.]

HP Compaq 8200 Elite CMT Business PC

Name / Model #3

Name / Model #4

Name / Model #5

**Purpose:** The document is intended for use by end-of-life recyclers or treatment facilities. It provides the basic instructions for the disassembly of HP products to remove components and materials requiring selective treatment, as defined by EU directive 2002/96/EC, Waste Electrical and Electronic Equipment (WEEE).

## 1.0 Items Requiring Selective Treatment

1.1 Items listed below are classified as requiring selective treatment.

1.2 Enter the quantity of items contained within the product which require selective treatment in the right column, as applicable.

Item Description	Notes	Quantity of items included in product
Printed Circuit Boards (PCB) or Printed Circuit Assemblies (PCA)	With a surface greater than 10 sq cm	2
Batteries	All types including standard alkaline and lithium coin or button style batteries	1
Mercury-containing components	For example, mercury in lamps, display backlights, scanner lamps, switches, batteries	
Liquid Crystal Displays (LCD) with a surface greater than 100 sq cm	Includes background illuminated displays with gas discharge lamps	
Cathode Ray Tubes (CRT)		
Capacitors / condensers (Containing PCB/PCT)		
Electrolytic Capacitors / Condensers measuring greater than 2.5 cm in diameter or height	Liteon 320W EPA power supply	5
	Acbel 320W EPA power supply	3
	Chicony 320W STD power supply	2
	Delta 320W EPA power supply	2
	Delta 320W STD power supply	1
	Bestec 320W STD power supply	3
	Bestec 320W EPA power supply	1
External electrical cables and cords		
Gas Discharge Lamps		

Plastics containing Brominated Flame Retardants weighing > 25 grams (not including PCBs or PCAs already listed as a separate item above)		
Components and parts containing toner and ink, including liquids, semi-liquids (gel/paste) and toner	Include the cartridges, print heads, tubes, vent chambers, and service stations.	
Components and waste containing asbestos		
Components, parts and materials containing refractory ceramic fibers		
Components, parts and materials containing radioactive substances		

## 2.0 Tools Required

List the type and size of the tools that would typically be used to disassemble the product to a point where components and materials requiring selective treatment can be removed.

Tool Description	Tool Size (if applicable)
Screwdriver	T-15
Micro shear	170II
Screwdriver	PH1
Description #4	
Description #5	

## 3.0 Product Disassembly Process

3.1 List the basic steps that should typically be followed to remove components and materials requiring selective treatment:

1. Remove the access panel.(see Figure 1 below)
2. Disconnect the cables from the board.(see Figure 2-5 below)
3. Remove the HDD from the cage.(see Figure 6 below)
4. Remove the power supply from the chassis.(see Figure 7&8 below)
5. Remove the system fan.(see Figure 9&10 below)
6. Remove the memory card from the board.(see Figure 11 below)
7. Remove the CPU from the system board .(see Figure 12-14 below)
8. Remove the battery from the system board.(see Figure 15 below)
9. Remove the system board from chassis.(see Figure 16&17 below)
10. Remove the front panel.(see Figure 18 below)
11. Remove the ODD from the chassis.(see Figure 19 below)
12. Remove the front I/O and power LED cable.(see Figure 20 below)
13. Remove the HDD, ODD, and PCI latches from the chassis.(see Figure 21-24 below)
14. Remove the fan guard from the fan.(see Figure 25 below)
15. Remove the power supply cover.(see Figure 26&28 below)
16. Remove the power supply PCA, and then disconnect the power cables.(see Figure 29&30 below)
17. Disconnect the power cables.(see Figure 31 below)
18. There are seven different possible power supplies in these computers. Use figures 32-38 to determine which power supply you have, and then remove the electrolytic capacitors as shown in the appropriate figure.

3.2 Optional Graphic. If the disassembly process is complex, insert a graphic illustration below to identify the items contained in the product that require selective treatment (with descriptions and arrows identifying locations).

Figure 1 Remove the access panel:



Figure 2 Disconnect the cables from the board

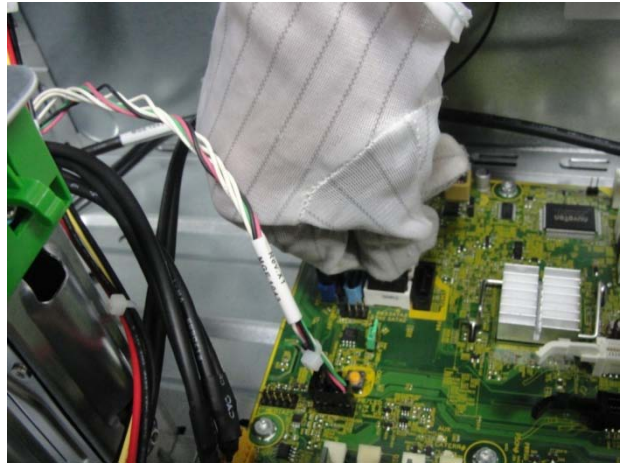


Figure 3 Disconnect power supply cables from the board

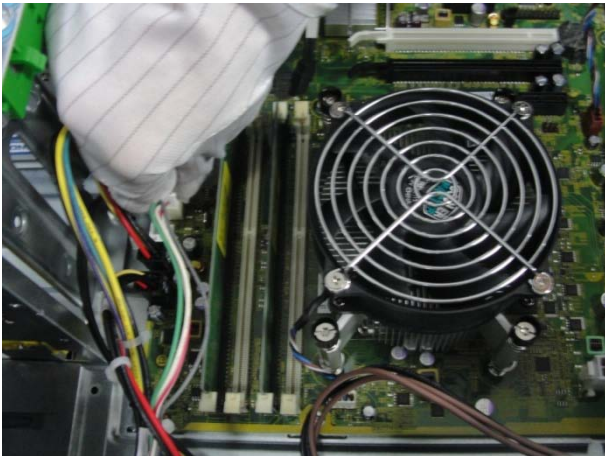


Figure 4 Disconnect the cables from the ODD



Figure 5 Disconnect the cables from the HDD



Figure 6 Remove the HDD from the cage



Figure 7 Remove the screws from power supply



Figure 8 Press the latch and remove the power supply



Figure 9 Remove the screws from the system fan



Figure 10 Remove the system fan



Figure 11 Remove the memory card from the board



Figure 12 Loosen the screws and remove CPU fan



Figure 13 Rotate the handle and open it up



Figure 14 Remove the CPU from the system board



Figure 15 Remove the battery from the system board

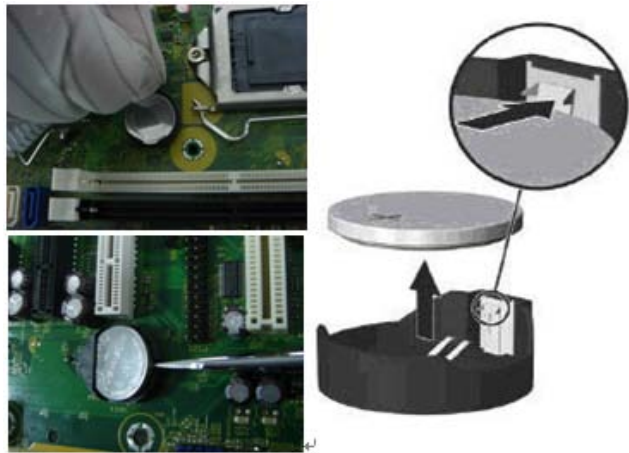


Figure 16 Remove the screws from board

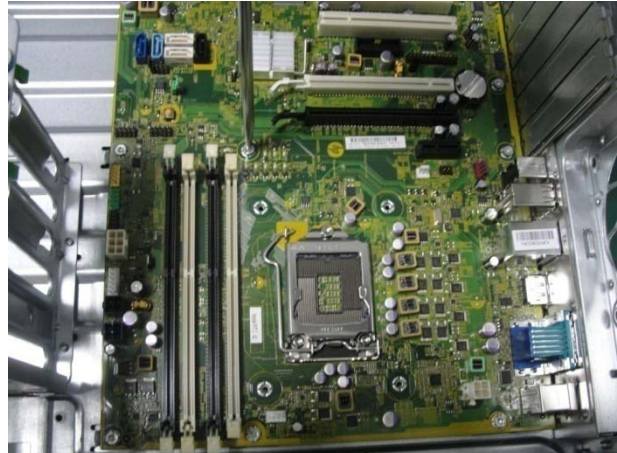


Figure 17 Remove the system board from the chassis



Figure 18 Remove the front bezel



Figure 19 Remove the ODD from the chassis



Figure 20 Remove the screw and remove front I/O and power LED assembly

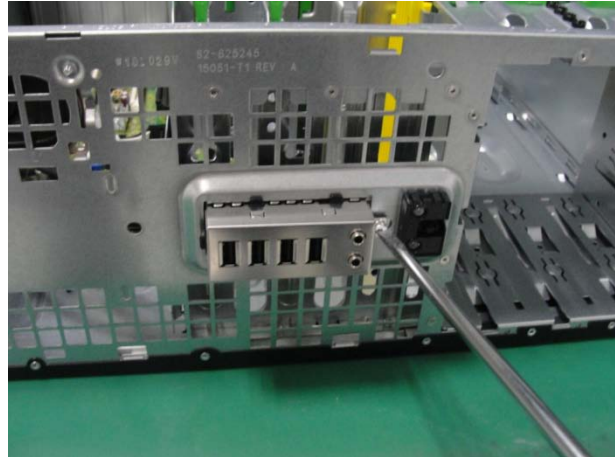


Figure 21 Remove the ODD Latch-DT from chassis



Figure 22 Remove the ODD Latch-MT from chassis



Figure 23 Remove the HDD latch from chassis



Figure 24 Remove the PCI latch from chassis



Figure 25 Remove the fan guard from fan



Figure 26 Remove the screws on the power supply chassis (Liteon 320W EPA)



Figure 27 Lift the cover off the power supply

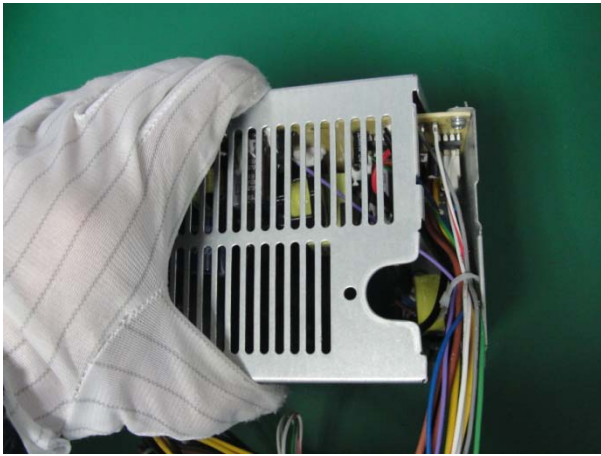


Figure 28 Lift the cover off the power supply

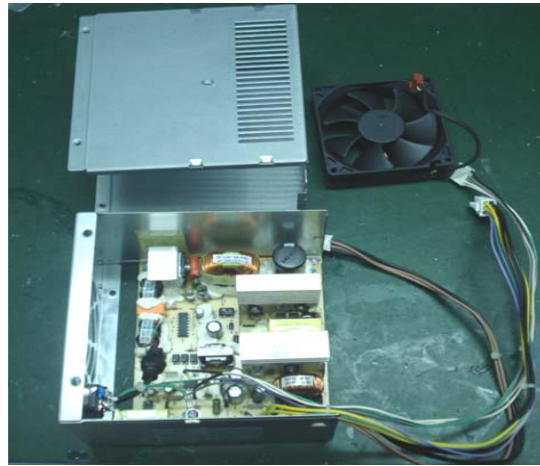


Figure 29 Remove the four screws from the board



Figure 30 Remove the board from the power supply

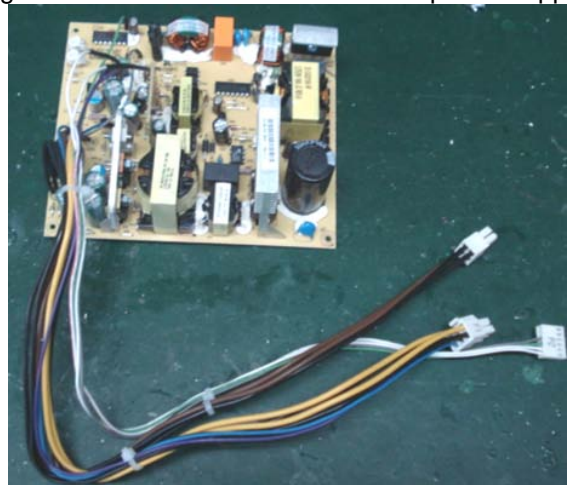


Figure 31 Remove the power cable from the power supply PCA

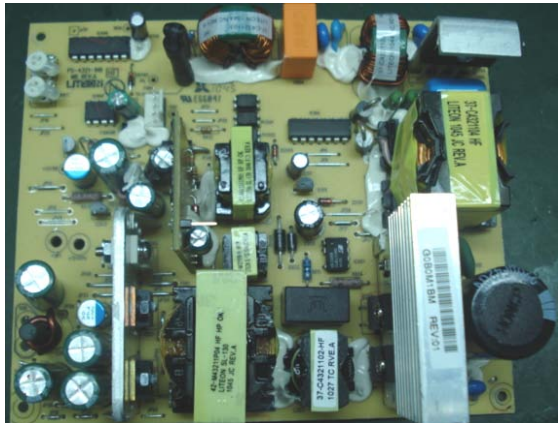


Figure 32 Remove the electrolytic capacitors (For Liteon 320W EPA)



Figure 33 Remove the electrolytic capacitors (For Acbel 320W EPA)

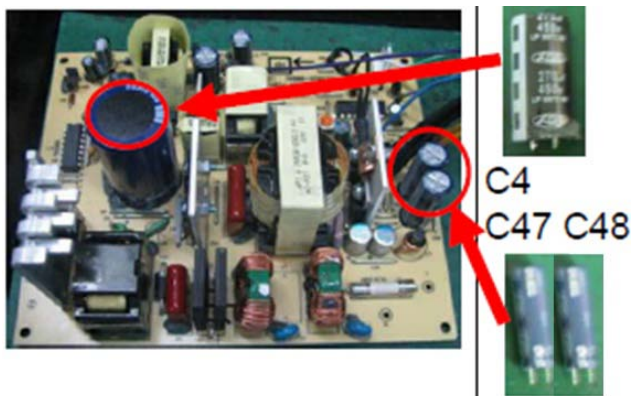


Figure 34 Remove the electrolytic capacitors (For Chicony 320W STD)



Figure 35 Remove the electrolytic capacitors (For Delta 320W EPA)

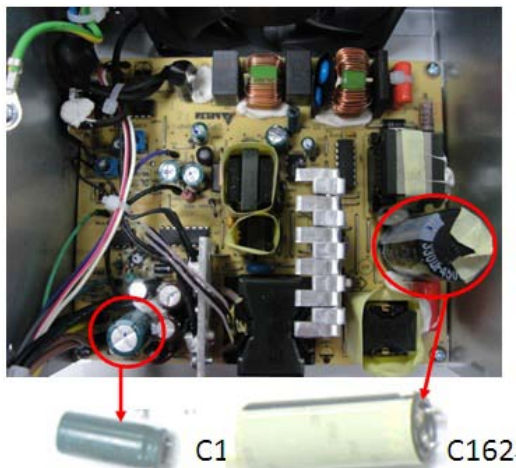


Figure 36 Remove the electrolytic capacitors (For Delta 320W STD)



Figure 37 Remove the electrolytic capacitors (For Bestec 320W STD)

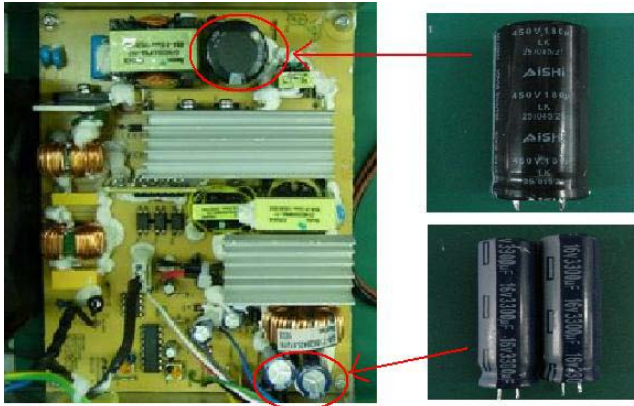


Figure 38 Remove the electrolytic capacitors (For Bestec 320W EPA)

