



Product End-of-Life Disassembly Instructions

Product Category: Personal Computers

Marketing Name / Model

[List multiple models if applicable.]

Compaq 100eu All-in-One PC

Name / Model #2

Purpose: The document is intended for use by end-of-life recyclers or treatment facilities. It provides the basic instructions for the disassembly of HP products to remove components and materials requiring selective treatment, as defined by EU directive 2002/96/EC, Waste Electrical and Electronic Equipment (WEEE).

1.0 Items Requiring Selective Treatment

1.1 Items listed below are classified as requiring selective treatment.

1.2 Enter the quantity of items contained within the product which require selective treatment in the right column, as applicable.

Item Description	Notes	Quantity of items included in product
Printed Circuit Boards (PCB) or Printed Circuit Assemblies (PCA)	With a surface greater than 10 sq cm	5
Batteries	All types including standard alkaline and lithium coin or button style batteries	1
Mercury-containing components	For example, mercury in lamps, display backlights, scanner lamps, switches, batteries	
Liquid Crystal Displays (LCD) with a surface greater than 100 sq cm	Includes background illuminated displays with gas discharge lamps	
Cathode Ray Tubes (CRT)		
Capacitors / condensers (Containing PCB/PCT)		
Electrolytic Capacitors / Condensers measuring greater than 2.5 cm in diameter or height		
External electrical cables and cords		
Gas Discharge Lamps		
Plastics containing Brominated Flame Retardants		
Components and parts containing toner and ink, including liquids, semi-liquids (gel/paste) and toner	Include the cartridges, print heads, tubes, vent chambers, and service stations.	
Components and waste containing asbestos		
Components, parts and materials containing refractory ceramic fibers		
Components, parts and materials containing radioactive substances		

2.0 Tools Required

List the type and size of the tools that would typically be used to disassemble the product to a point where components and materials requiring selective treatment can be removed.

Tool Description	Tool Size (if applicable)
Description #1 Phillips screwdriver	
Description #2 Dikes	
Description #3 Flat head screwdriver	
Description #4 Torx screwdriver	T15
3.0 Product Disassembly Process	

3.1 List the basic steps that should typically be followed to remove components and materials requiring selective treatment:

1. To remove the stand, remove the two Torx screws (1) that secure the stand to the computer, and then lift the stand off (see Figure 1).
2. To remove the small rear cover (see Figure 2):
 - a. Remove the two black Phillips PM 2.0x6.0 screws (1) that secure the cover to the computer.
 - b. Lift the bottom of the cover, rotate it up, and then lift the cover off the computer (2).
3. To remove the large rear cover (see Figure 3):
 - a. Remove the five black Phillips PM 2.5x6.0 screws (1) that secure the cover to the computer.
 - b. Lift the bottom of the cover at the slots, and then lift the cover off the computer (2).
4. To remove the outer rear cover (see Figure 4):
 - a. Remove the eight black Phillips PM 3.0x11.0 screws (1) that secure the cover to the computer.
 - b. Starting on the left side and working right, pry the cover from the computer (2).
5. To remove the power button board (see Figure 5):
 - a. Pull the two tabs that hold the board in place downward (1), and then lift the board from the slot (2).
 - b. Disconnect the cable from the board (3).
6. To remove the volume board (see Figure 6):
 - a. Remove the two silver PM 2.5x5.0 screws that secure the board to the computer (1).
 - b. Lift the board from the computer as far as the cable will allow (2).
 - c. Disconnect the cable from the board (3).
7. To remove the rear metal cover (see Figures 7 & 8):
 - a. Remove the rear metal cover by removing the three Torx 2.5x6.0 screws that secure the cover to the computer.
 - b. Slide the cover toward the bottom of the computer to disengage it (1), lift the cover up about one inch, slide the cover toward the bottom of the computer until the cover (2) clears the bracket the stand mounts to, and then lift the metal cover from the computer (3).
8. To remove the display board (see Figure 9):
 - a. Disconnect the two LIF connectors on the top of the board (1) and the connector on the bottom of the board (2).
 - b. Remove the two silver Torx 2.5x7.0 screws that secure the board to the computer (3), and then lift the board up and out of the computer.
9. To remove the fan sink, loosen the two captive silver Torx screws that secure the fan sink to the system board, and then remove the fan sink from the system board (see Figure 10).
10. To remove the system board (see Figures 11, 12, 13):
 - a. Disconnect all cables and wires from the system board.
 - b. Remove the six silver Torx 3.0x7.0 screws that secure the system board assembly to the computer.
 - c. To separate the smaller board from the larger system board, remove the two silver Torx 3.0x7.0 screws that secure the bracket to the small board, and then remove the bracket from the board.
 - d. Pull the boards apart.

3.2 Optional Graphic. If the disassembly process is complex, insert a graphic illustration below to identify the items contained in the product that require selective treatment (with descriptions and arrows identifying locations).

FIGURE 1: Removing the stand

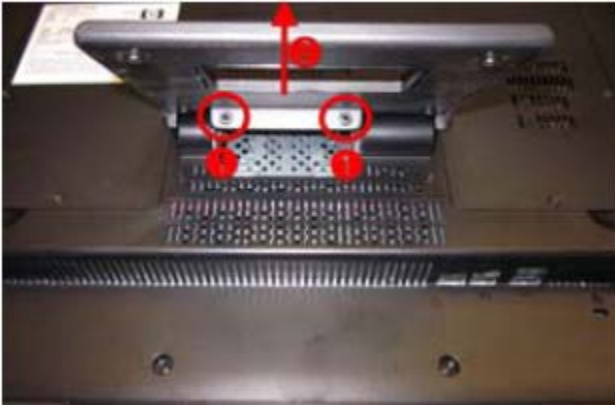


FIGURE 2: Removing the small rear cover

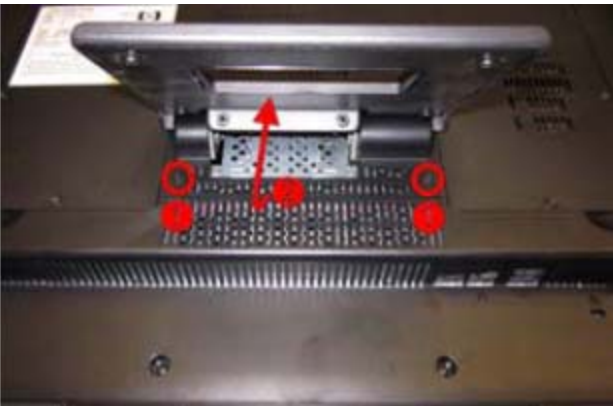


FIGURE 3: Removing the large rear cover

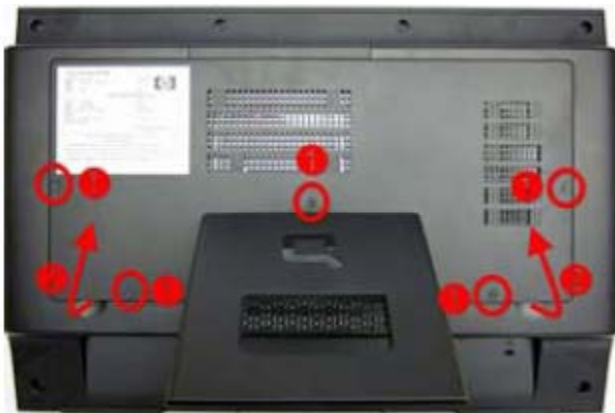


FIGURE 4: Removing the outer rear cover

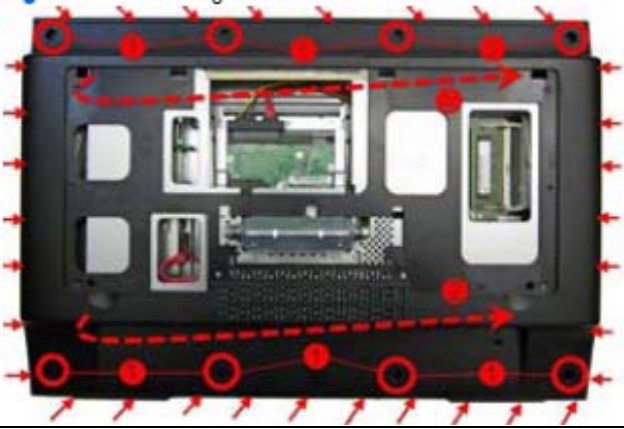


FIGURE 5: Removing the power button board

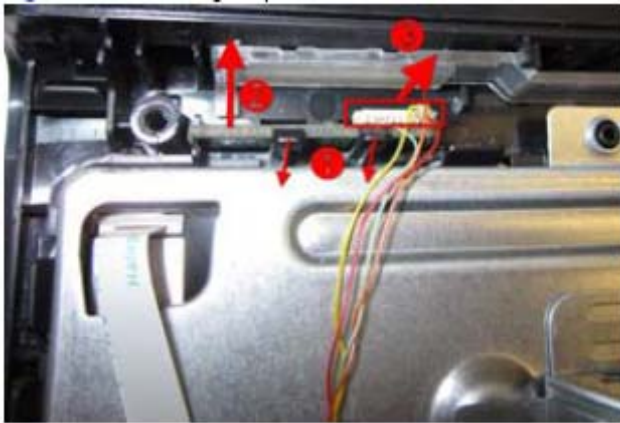


FIGURE 6: Removing the volume board



FIGURE 7: Rear metal cover screw locations

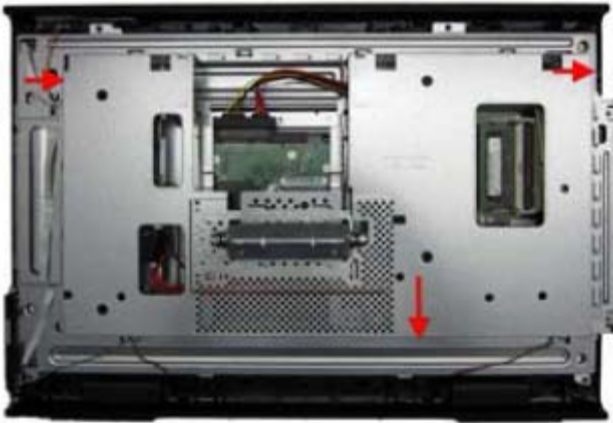


FIGURE 8: Removing the rear metal cover

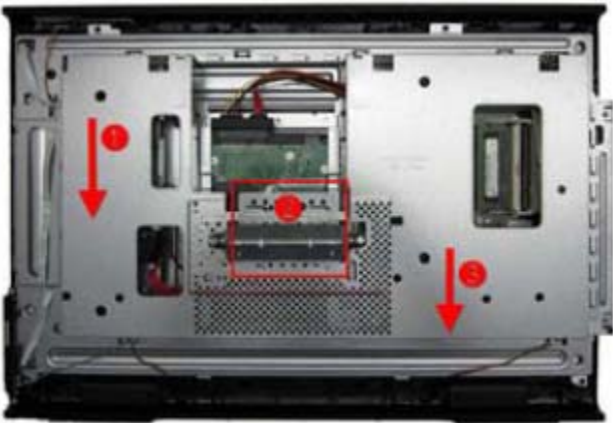


FIGURE 9: Removing the display board

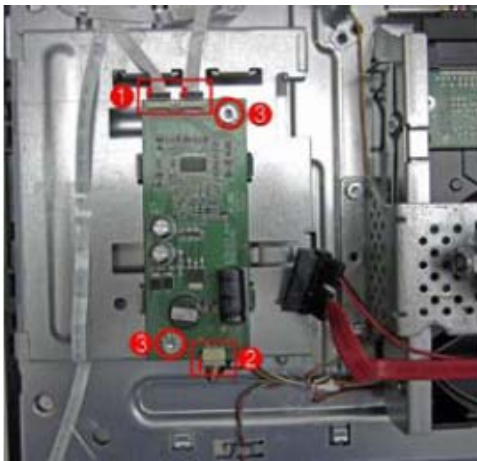


FIGURE 10: Removing the fan sink

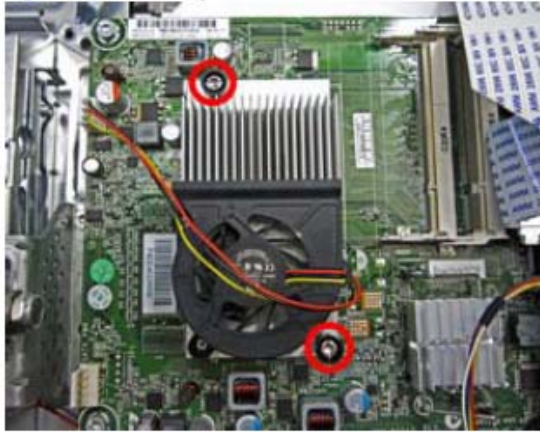


FIGURE 11: Removing the system board



FIGURE 12: Removing the small board from the bracket



FIGURE 13: Removing the small board from the system board

