



Product End-of-Life Disassembly Instructions

Product Category: Personal Computers

Marketing Name / Model

[List multiple models if applicable.]

HP Elite 7000 Microtower Business PC

Purpose: The document is intended for use by end-of-life recyclers or treatment facilities. It provides the basic instructions for the disassembly of HP products to remove components and materials requiring selective treatment, as defined by EU directive 2002/96/EC, Waste Electrical and Electronic Equipment (WEEE).

1.0 Items Requiring Selective Treatment

1.1 Items listed below are classified as requiring selective treatment.

1.2 Enter the quantity of items contained within the product which require selective treatment in the right column, as applicable.

Item Description	Notes	Quantity of items included in product
Printed Circuit Boards (PCB) or Printed Circuit Assemblies (PCA)	With a surface greater than 10 sq cm	3
Batteries	All types including standard alkaline and lithium coin or button style batteries Inside mainboard	1
Mercury-containing components	For example, mercury in lamps, display backlights, scanner lamps, switches, batteries	
Liquid Crystal Displays (LCD) with a surface greater than 100 sq cm	Includes background illuminated displays with gas discharge lamps	
Cathode Ray Tubes (CRT)		
Capacitors / condensers (Containing PCB/PCT)		
Electrolytic Capacitors / Condensers measuring greater than 2.5 cm in diameter or height	Inside power supply	2
External electrical cables and cords		
Gas Discharge Lamps		
Plastics containing Brominated Flame Retardants weighing > 25 grams (not including PCBs or PCAs already listed as a separate item above)	Fans	3
Components and parts containing toner and ink,	Include the cartridges, print heads, tubes, vent	

including liquids, semi-liquids (gel/paste) and toner	chambers, and service stations.	
Components and waste containing asbestos		
Components, parts and materials containing refractory ceramic fibers		
Components, parts and materials containing radioactive substances		

1.3 Markings for plastic parts greater than 25 grams

Plastic Part Name	Plastic Part Description	Weight (grams)	ISO 11469:2000 Plastic Part Mark	Optional: Photo
Spruce Main Bezel	Main front bezel piece	150	>ABS<	
Spruce Bezel Frame	Front bezel frame	194	>ABS<	
System Fan Frame	Fan Frame	47	>PBT-GF30-FR(17)<	
CPU Heatsink Fan Frame	Fan Frame	37	>PBT-GF30-FR(17)<	

2.0 Tools Required

List the type and size of the tools that would typically be used to disassemble the product to a point where components and materials requiring selective treatment can be removed.

Tool Description	Tool Size (if applicable)
Screwdriver	T-15
Micro shear	170II
Screwdriver	PH1
Description #4	
Description #5	

3.0 Product Disassembly Process

3.1 List the basic steps that should typically be followed to remove components and materials requiring selective treatment:

1. SYSTEM BOARD

1.1 Remove the access panel:

- a) Remove the screw that secure the access panel to the computer chassis. (see Figure 1 below)
- b) Pull the panel off the unit. (see Figure 2 below)

1.2 Disconnect the data cables from the board.(see Figure 3-7 below)

- a) Disconnect the CPU cable and ATX cables from the board.
- b) Disconnect the ODD cable and HDD cable from the board.
- c) Disconnect the power switch cable and front I/O cable from the board.

1.3 Remove the Graphic card from the system board(see Figure 8-11)

- a) Loosen the screw that secures the PCI card to the chassis
- b) Remove the metal baffle
- c) Pull the switch of the PCI_E slot
- d) Remove the Graphic card from the slot

1.4 Remove the system fan.(see Figure 12&13 below)

- a) Remove the cables from the mainboard.
- b) Loosen the screws and remove the system fan from the chassis.

1.5 Remove the processor from the system board: (see Figure 14-18 below)

- a) Remove the processor fan cable from the board
- b) Loosen the screws that secure the CPU fan to the system board.
- c) Lift the heat sink from atop the processor and set it on its side to keep from contaminating the work area with thermal grease.
- d) Rotate the handle and lift the processor from the socket.

1.6 Remove the Memory.(see Figure 19&20 below)

- a) Push the two handles of the DIMM slot
- b) Lift the memory from the DIMM slot

1.7 Remove the system board: (see Figure 21-&22 below)

- a) Remove the screws that secure the system board to the chassis .
- b) Lift the system board upwards then remove it.

2. BATTERY

2.1 Release the battery from its holder, squeeze the metal clamp that extends above one edge of the battery. Then the battery pops up, lift it out.(see Figure 23 below).

3. SYSTEM DRIVERS

3.1 Remove the HDD.(see Figure 24-30 below)

- a) Remove the cables connect to the HDD.
- b) Loose the screws that secure the HDD cage to chassis
- c) Push the handle and push the HDD cage off the chassis
- d) Loose the screws on thetwo side of the HDD cage
- e) Pull the HDD from the HDD cage

3.2 Remove the ODD.(see Figure 31-34 below)

- a) Remove the cables connect to the ODD.
- b) Pull outward on all three tabs on the front bezel.
- c) Loose the screws on the ODD cage
- d) Lift the handle and pull the ODD out of the ODD cage.

3.3 Remove the front I/O.(see Figure 35-37 below)

- a) Loose the screw that secure the front I/O to chassis.
- b) Cut the plastic cable clamp that secures the cables to the cover
- c) Lift the Front I/O and pull it out of the chassis.

3.4 Remove the power on/off switch.(see Figure 38&39 below)

- a) Extrusion the bottom of the switch.
- b) Pull the switch out of the chassis.

4. POWER SUPPLY

4.1 Take off the power supply: (see Figure 40-43 below)

- a) Remove the four screws that secure the power supply to the chassis.
- b) Press the baffle and slide the power supply toward the front of the computer,
- c) Lift the power supply out of the chassis.

4.2 Remove the cover from the power supply: (see Figures 44-48 below)

- a) Remove the six screws that secure the cover to the power supply chassis.
- b) Cut the plastic cable clamp that secures the cables to the cover.

- c) Lift the cover off the power supply.
- d) Cut the plastic cable clamp that secures the cables to the power cable.
- e) Remove the four screws of the PFC module.
- f) Lift the PFC out of the power supply cage.

4.3 Remove the power supply fan (see Figures 49&50)

- a) Remove the four screws on the power supply
- b) Lift the power supply fan from the cage.

4.4 Remove the power supply PCA: (see Figure 51-55 below)

- a) Remove the screw that secure the ground to the cage.
- b) Remove the screw that secure the switch to the chassis
- c) Push the switch and light out of the cage.
- d) Remove the four screws that secure the power supply PCA to the chassis.
- e) Remove the power supply PCA from the power supply chassis.

4.4 Remove the Electrolytic Capacitors:(see Figure 56&57 below)

- a) Using Soldering Iron, heat the solder of Electrolytic Capacitors.
- b) Remove the Electrolytic Capacitors.

- 5.
- 6.
- 7.
- 8.
- 9.
- 10.
- 11.

3.2 Optional Graphic. If the disassembly process is complex, insert a graphic illustration below to identify the items contained in the product that require selective treatment (with descriptions and arrows identifying locations).

Figure 1 Remove the screw on the cover



Figure 2 pull out the blade card

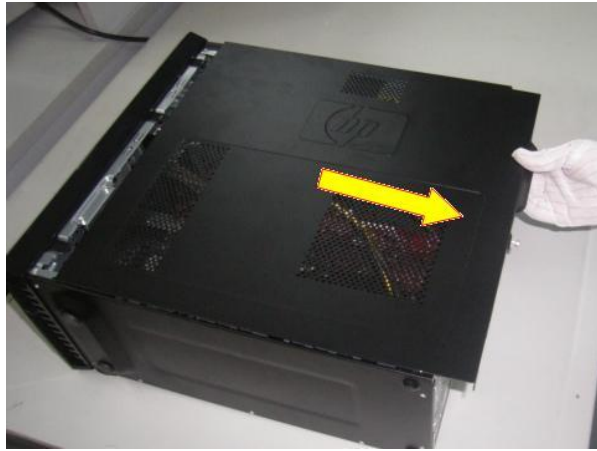


Figure 3 Disconnect the cables from the board



Figure 4 Disconnect the cables from the board



Figure 5 Disconnect the cables from the board

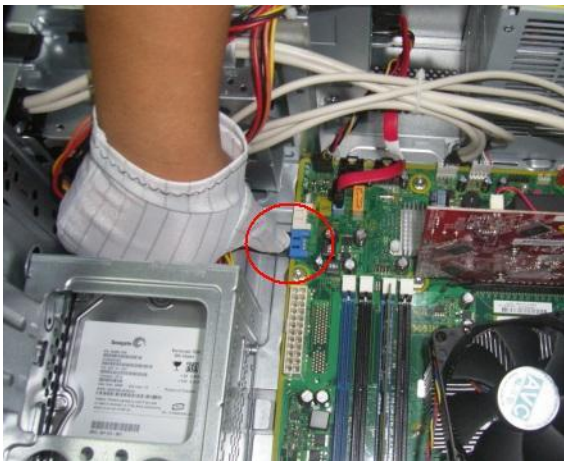


Figure 6 Disconnect the cables from the board

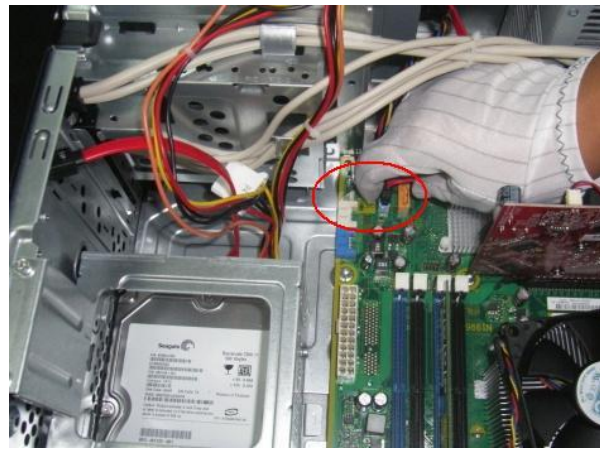


Figure 7 Disconnect the cables from the board

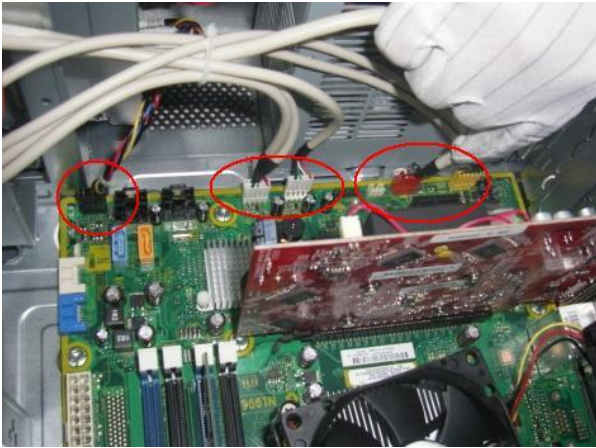


Figure 8 Loose the screw of PCI shielding



Figure 9 Remove the PCI shield



Figure 10 Push the switch of PCI_E slot

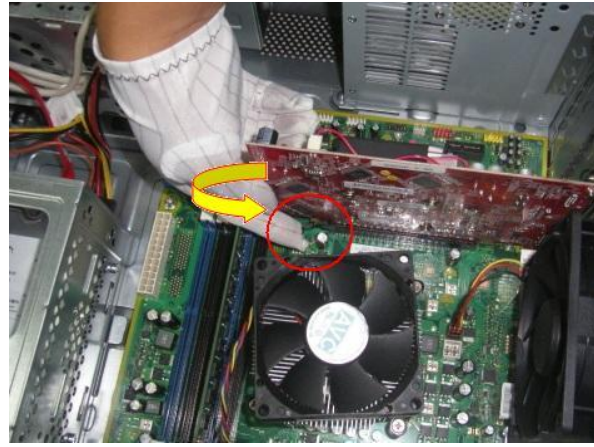


Figure 11 Remove the Graphic card from the board

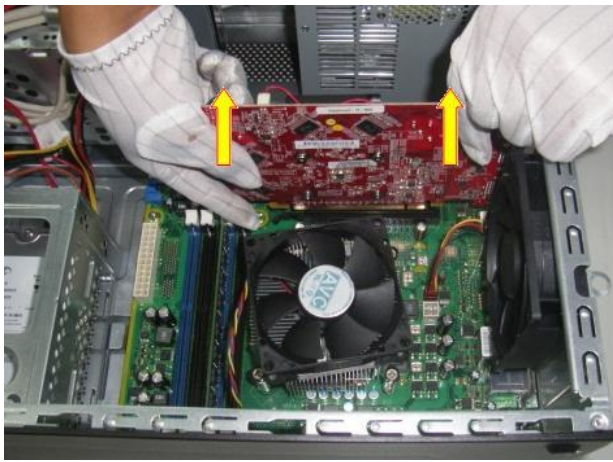


Figure 12 Disconnect the system fan from the board



Figure 13 Loose the four screws and remove the fan

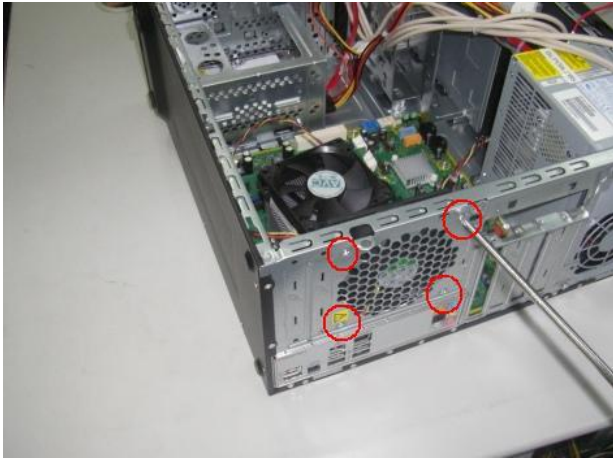


Figure 14 Remove the CPU fan cable from the board



Figure 15 Loose the four screws of the fan

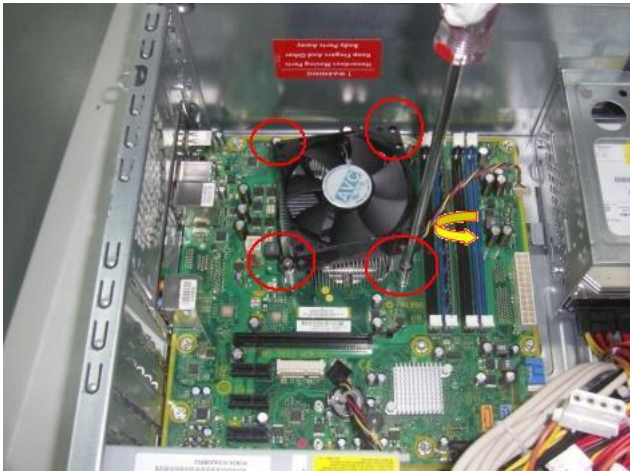


Figure 16 Remove the CPU fan



Figure 17 Rotate the handle and open it up



Figure 18 Remove the processor from the socket.



Figure 19 Push the two handles of the DIMM slot

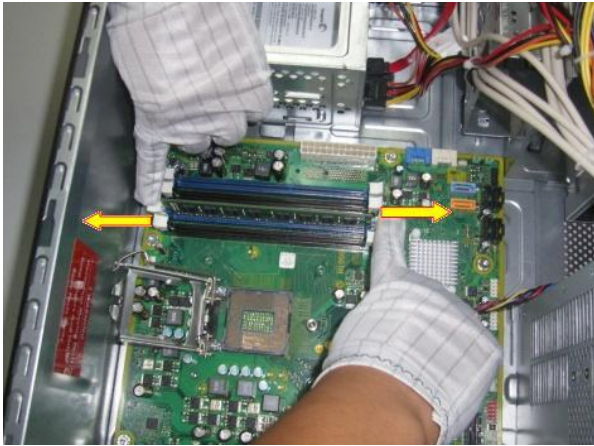


Figure 20 Lift the memory from the DIMM slot



Figure 21 Loose the four screws on the PCA

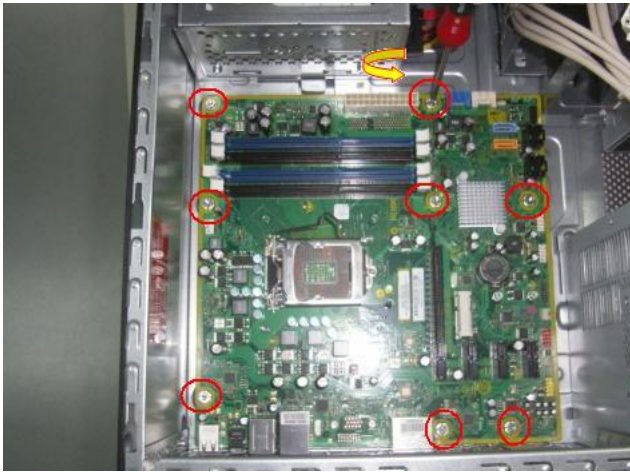


Figure 22 Lift the mainboard from the chassis



Figure Remove the battery from the system board



Figure 24 Remove the cables connect to the HDD.



Figure 25 Loose the screws on the HDD cage

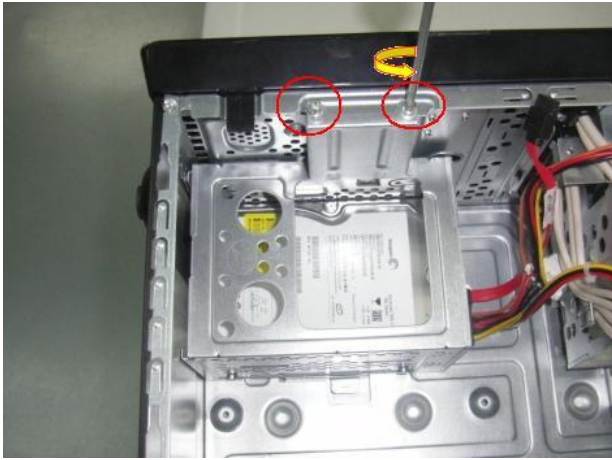


Figure 26 Push the handle of the HDD cage



Figure 27 Pull the HDD cage off the chassis

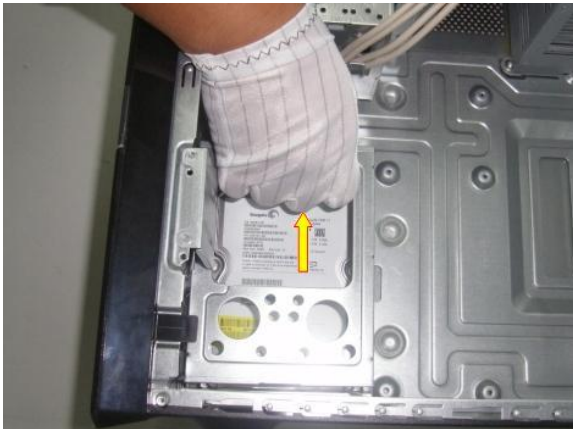


Figure 28 Loose the screws on the side of HDD cage

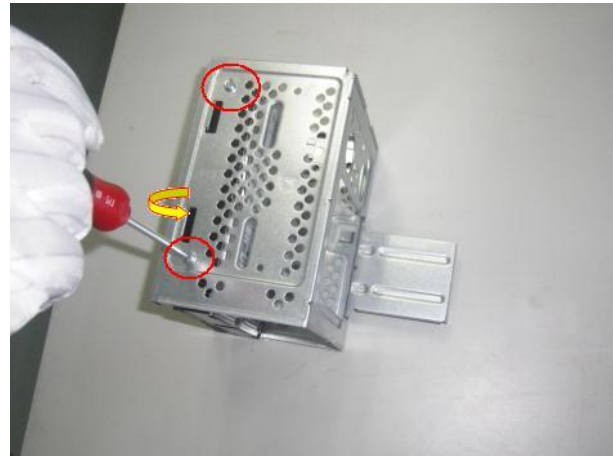


Figure 29 Loose the screws on other side of HDD cage

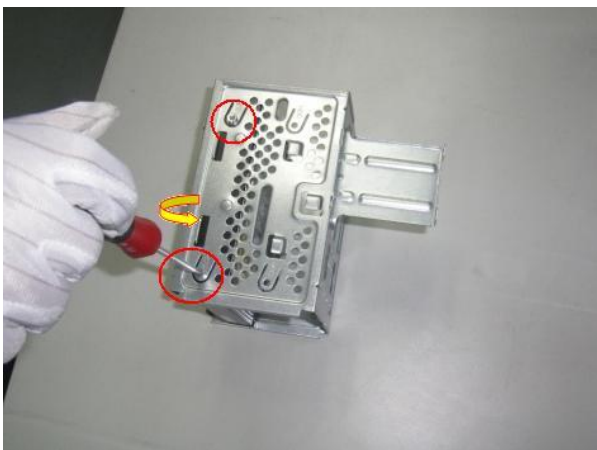


Figure 30 Pull the HDD from the HDD cage



Figure 31 Remove the cables connect to the ODD



Figure 32 Pull the switch tabs on the front bezel

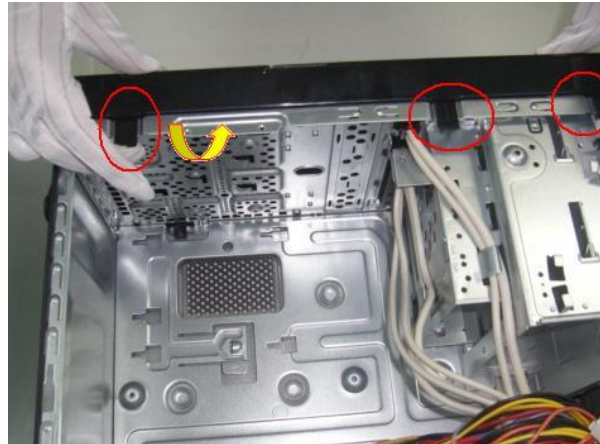


Figure 33 Loose the screws on the ODD cage

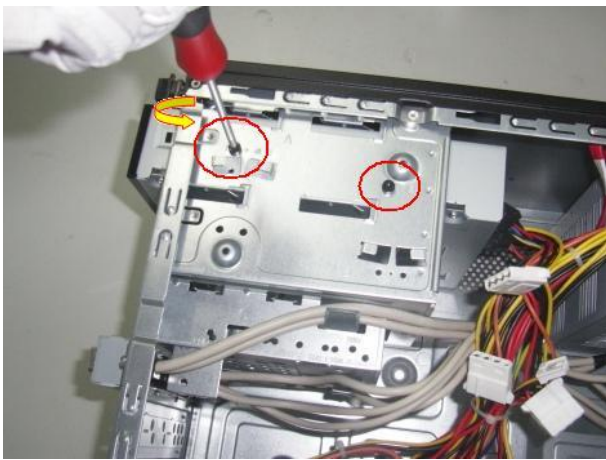


Figure 34 pull the ODD out of the ODD cage



Figure 35 Loose the screw of the front I/O to chassis.



Figure 36 Cut the plastic cable clamp

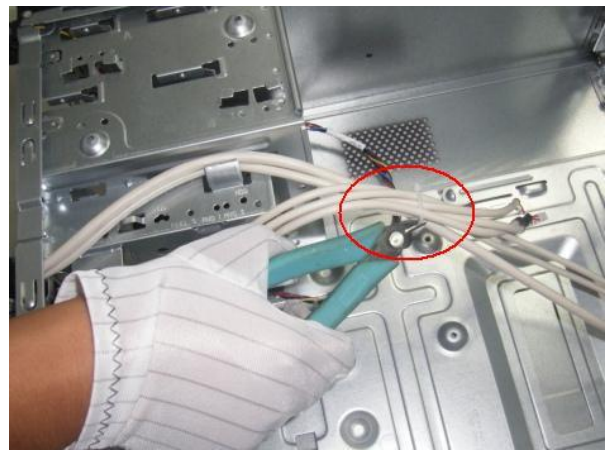


Figure 37 Lift the Front I/O and pull it out

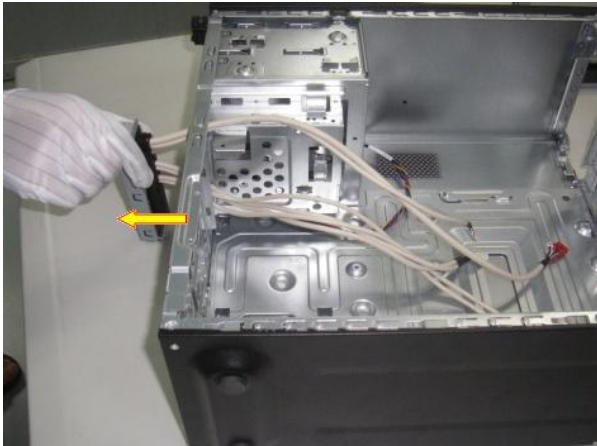


Figure 38 Remove the switch cable out of the slot

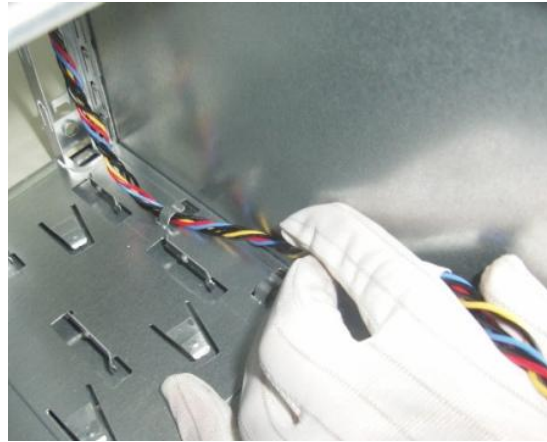


Figure 39 Extrusion the bottom of the power on/off switch and Pull it out of the chassis



Figure 40 Remove four screws on the power supply



Figure 41 Press the baffle and slide the PSU



Figure 42 Lift the power supply out of the chassis.



Figure 43 Remove six screws on the power supply

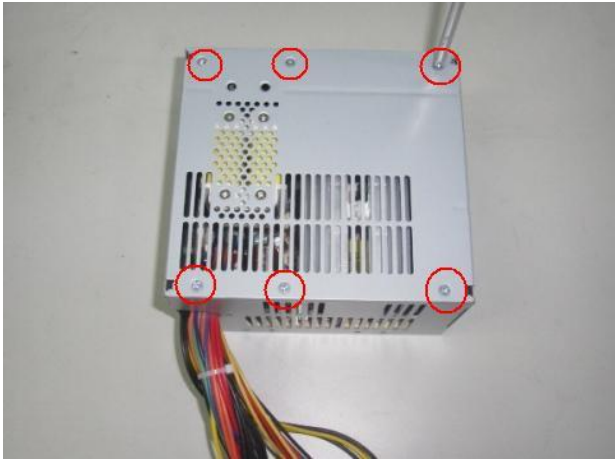


Figure 44 Cut the outside plastic cable clamp

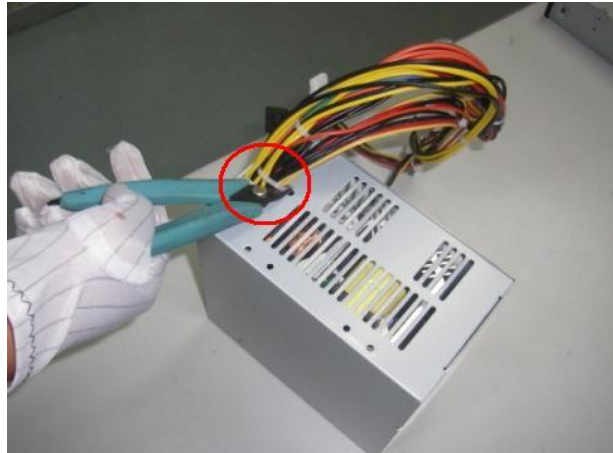


Figure 45 Lift the cover off the power supply.

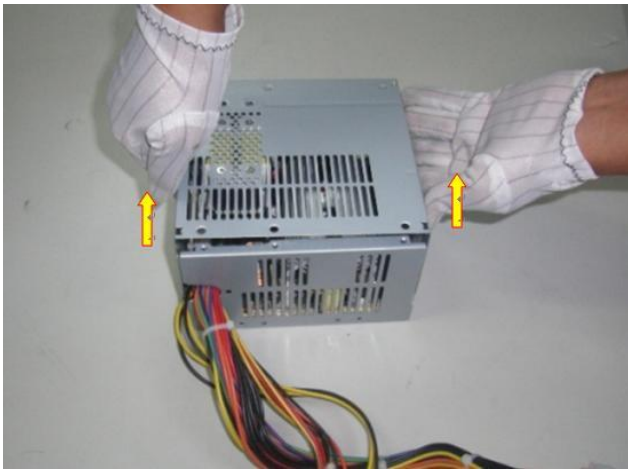


Figure 46 Cut the inside plastic cable clamp



Figure 47 Remove four screws of the PFC module.



Figure 48 Lift the PFC out of the power supply cage

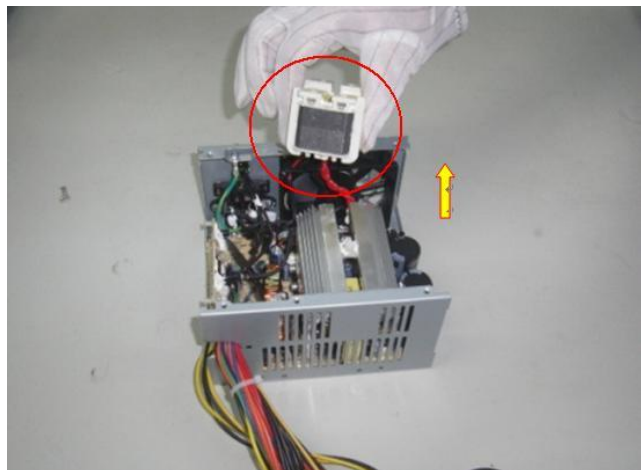


Figure 49 Remove the four screws on the PSU

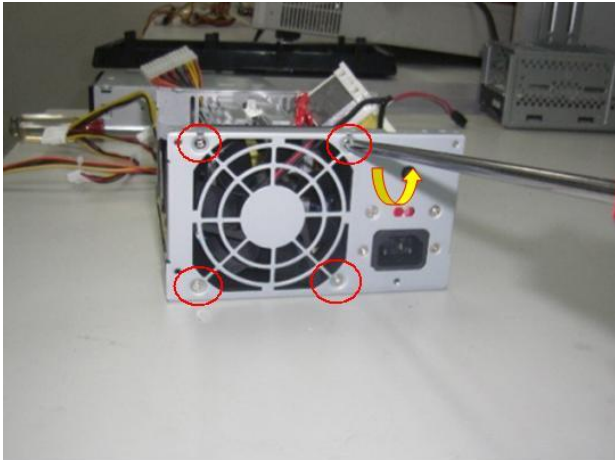


Figure 50 Lift the power supply fan from the cage.

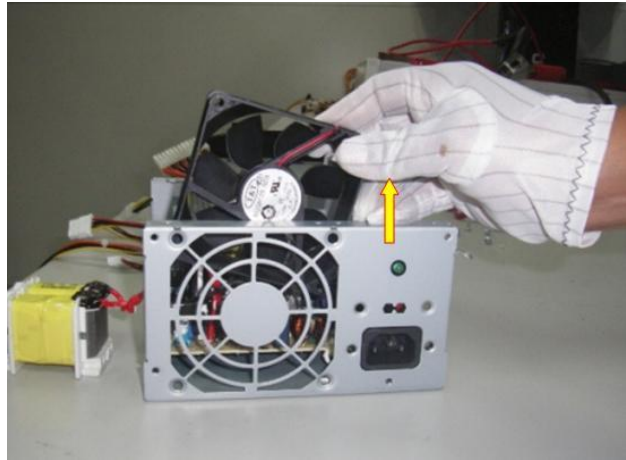


Figure 51 Remove the screw on the ground cable

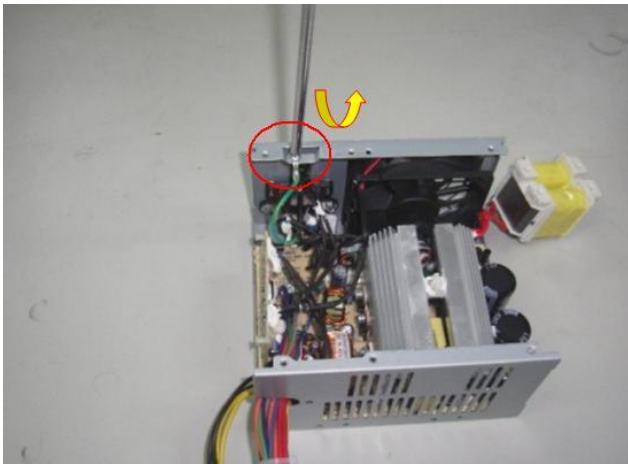


Figure 52 Remove the screw on the connector and switch

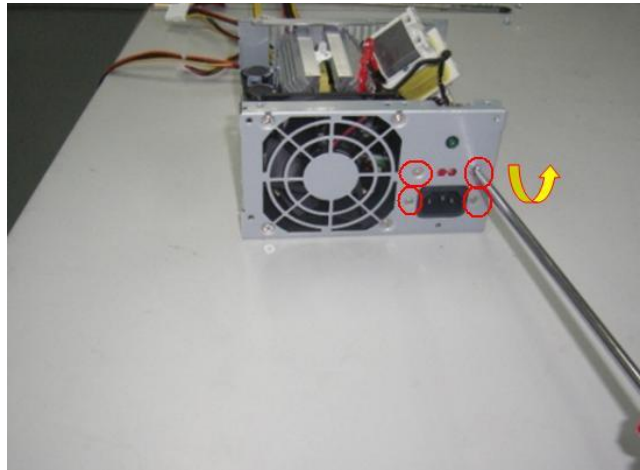


Figure 53 Push the switch and light out of the cage.



Figure 54 Remove the four screws on the PCA board

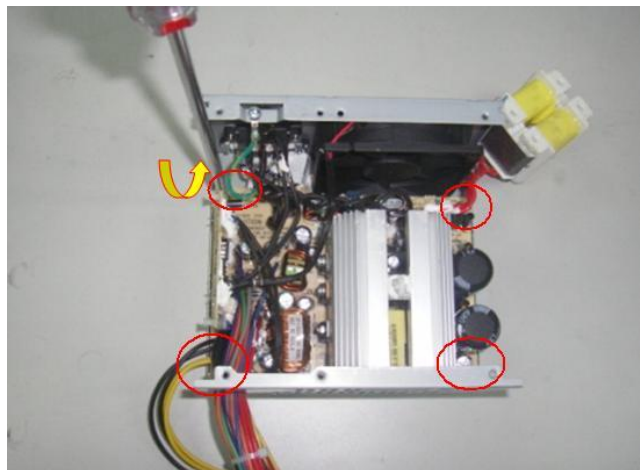


Figure 55 Remove the PCA out of the cage.

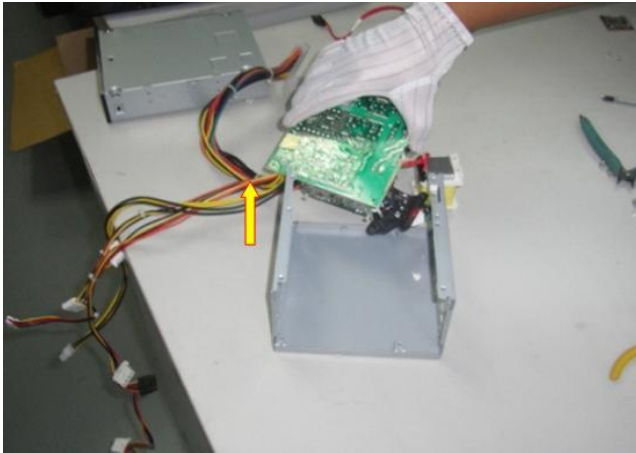


Figure 56 Heat the solder of Electrolytic Capacitors.

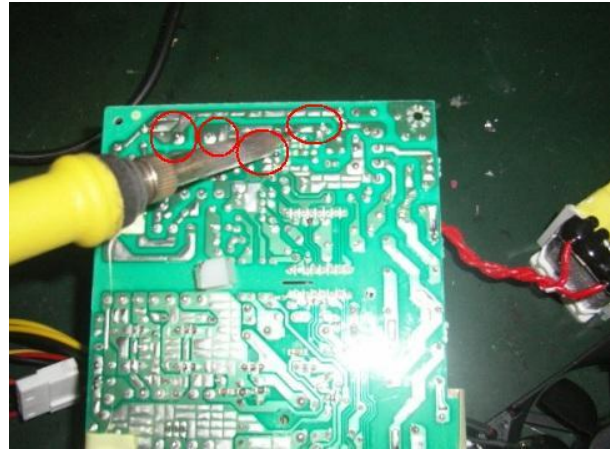


Figure 57 Remove the Electrolytic Capacitors.

