

Perpetual Calender: Puss In Boots



INSTRUCTIONS

MATERIALS:

- Metal-edged ruler
- Butter knife
- Scissors or craft knife
- Cutting mat (optional)
- Multipurpose glue

GETTING STARTED

- 1** Score all pieces: Using a ruler as a guide, run the back side of a butter knife firmly along all dotted and dashed lines.



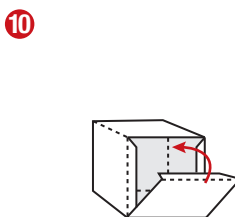
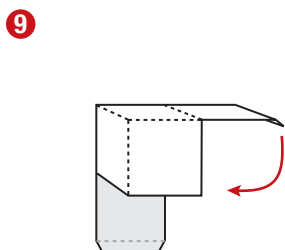
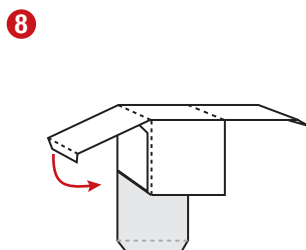
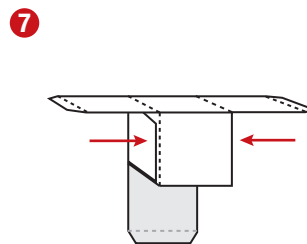
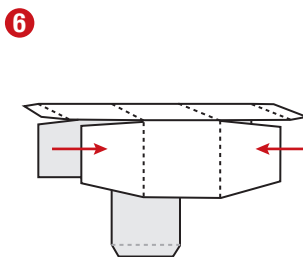
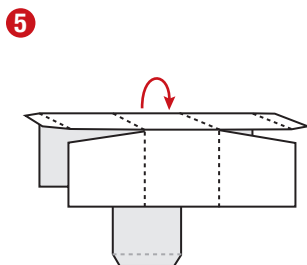
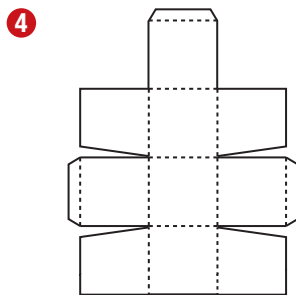
- 2** Using scissors or a craft knife and cutting mat, cut out all pieces along solid lines. Be sure to cut out the small square where indicated on Base piece.



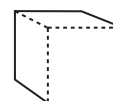
- 3** When folding along score lines, use the key below as a guide.



DAY BLOCKS: Fold blocks using steps 4-10, gluing white tabs inside as you go.

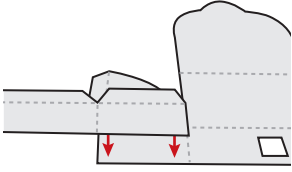


- 11** Repeat steps 4-10 on second block.

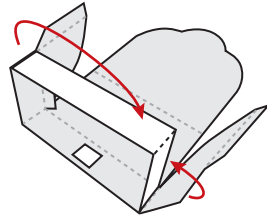


BASE

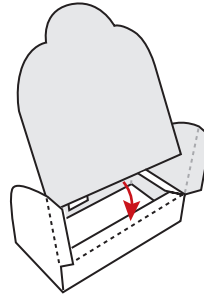
- 12** Glue one side of bracket to back of base piece, as shown.



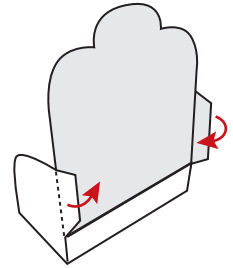
- 13** Glue other end of bracket to the other side of base piece.



- 14** Fold base so it rests on the bracket tabs and glue in place.

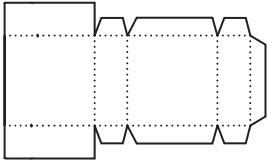


- 15** Fold the rear tabs and glue to back of base.

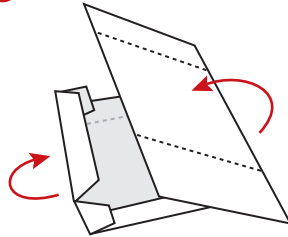


MONTH BLOCK: Fold block using steps 16-18, gluing white tabs inside as you go.

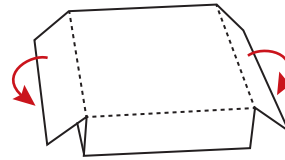
16



17

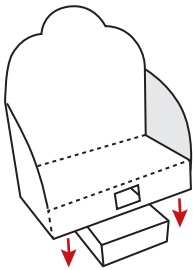


18

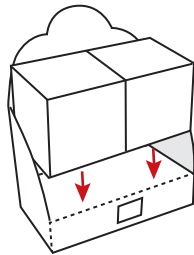


PUT IT ALL TOGETHER

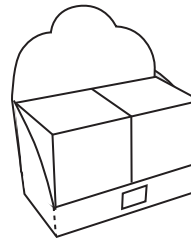
- 19** Place base over month block so that current month is displayed in the window.



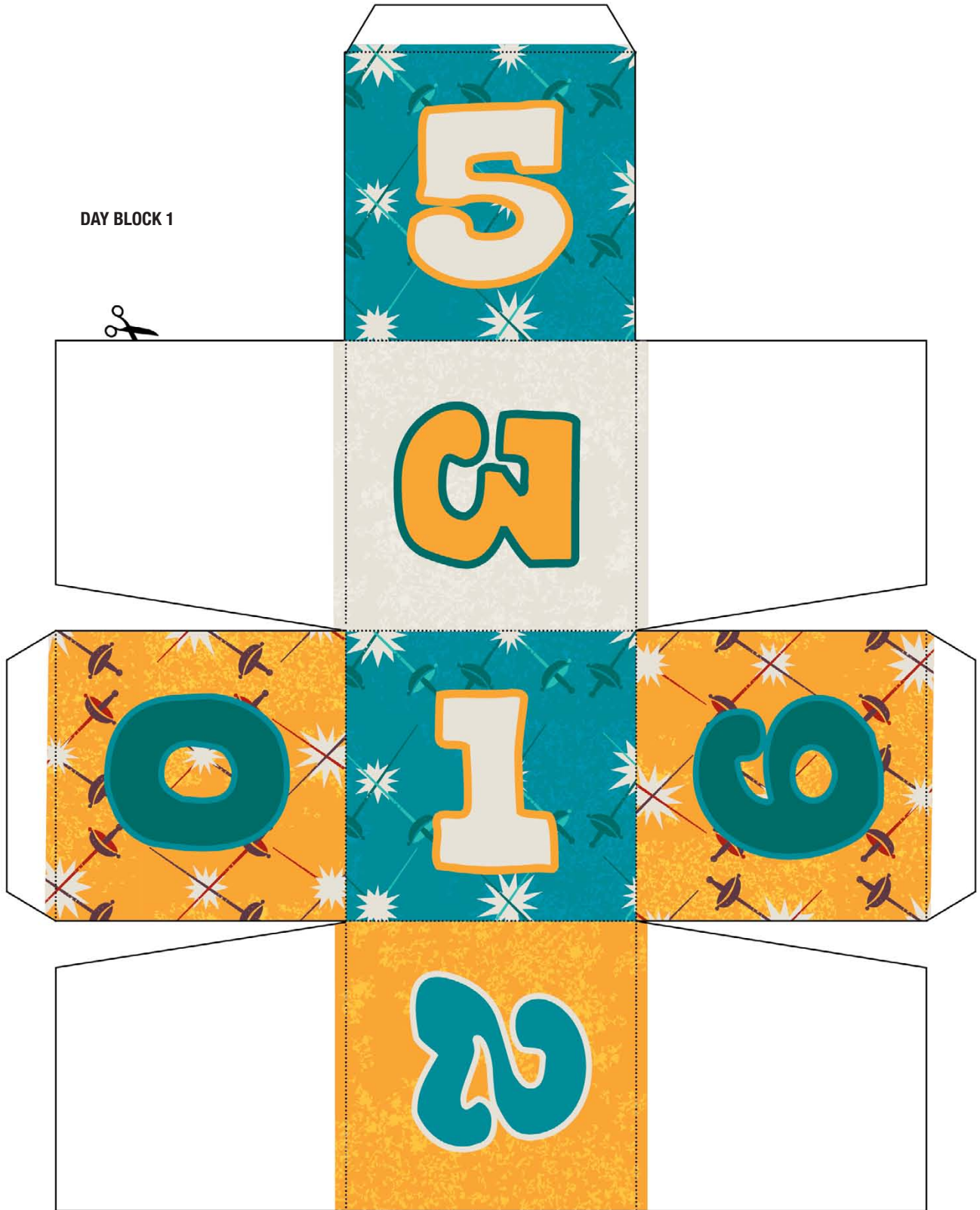
- 20** Place the day blocks on the base so that current date is displayed facing forward.



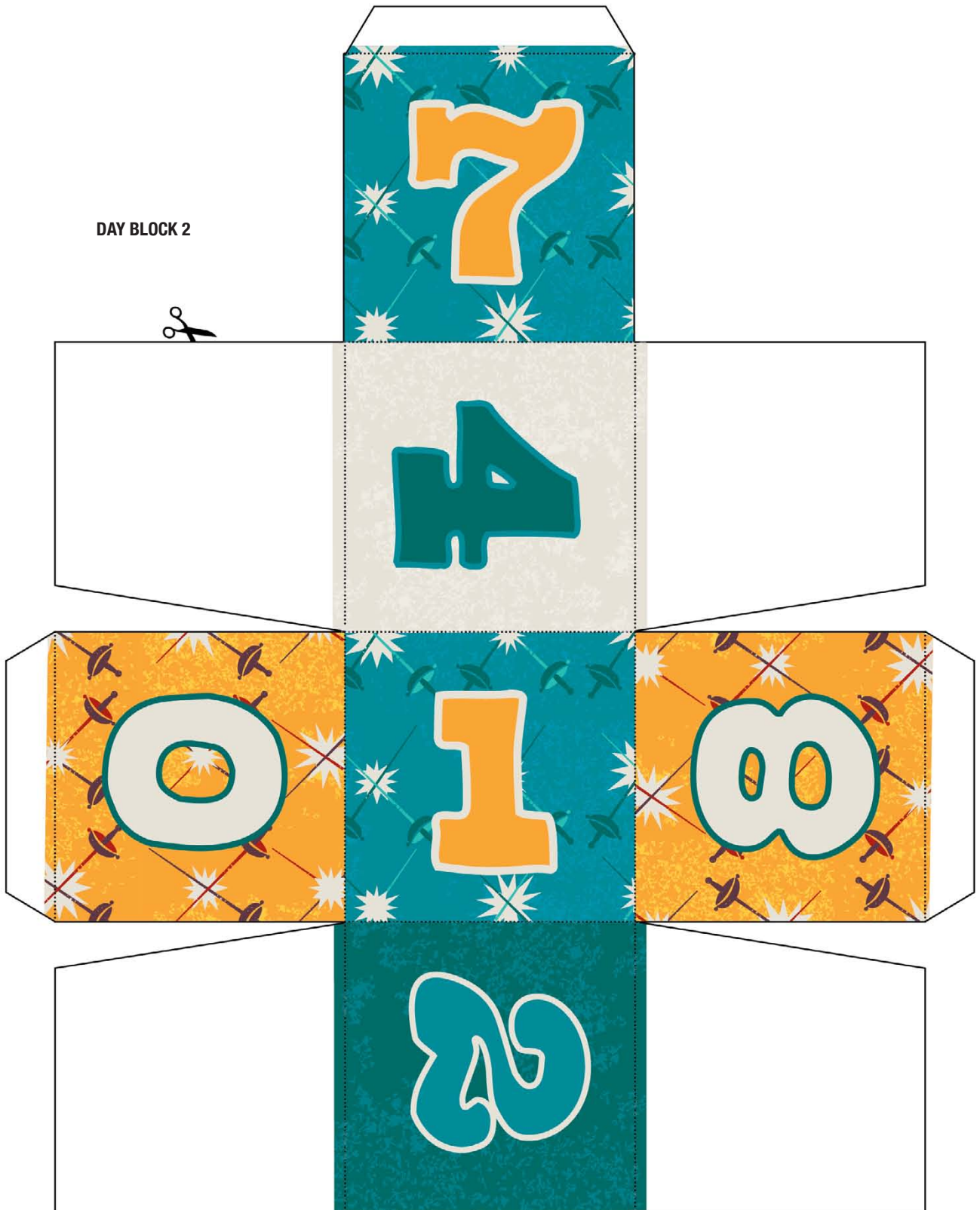
- 21** To use the calendar, rotate the day and month blocks daily so that the correct date is displayed.

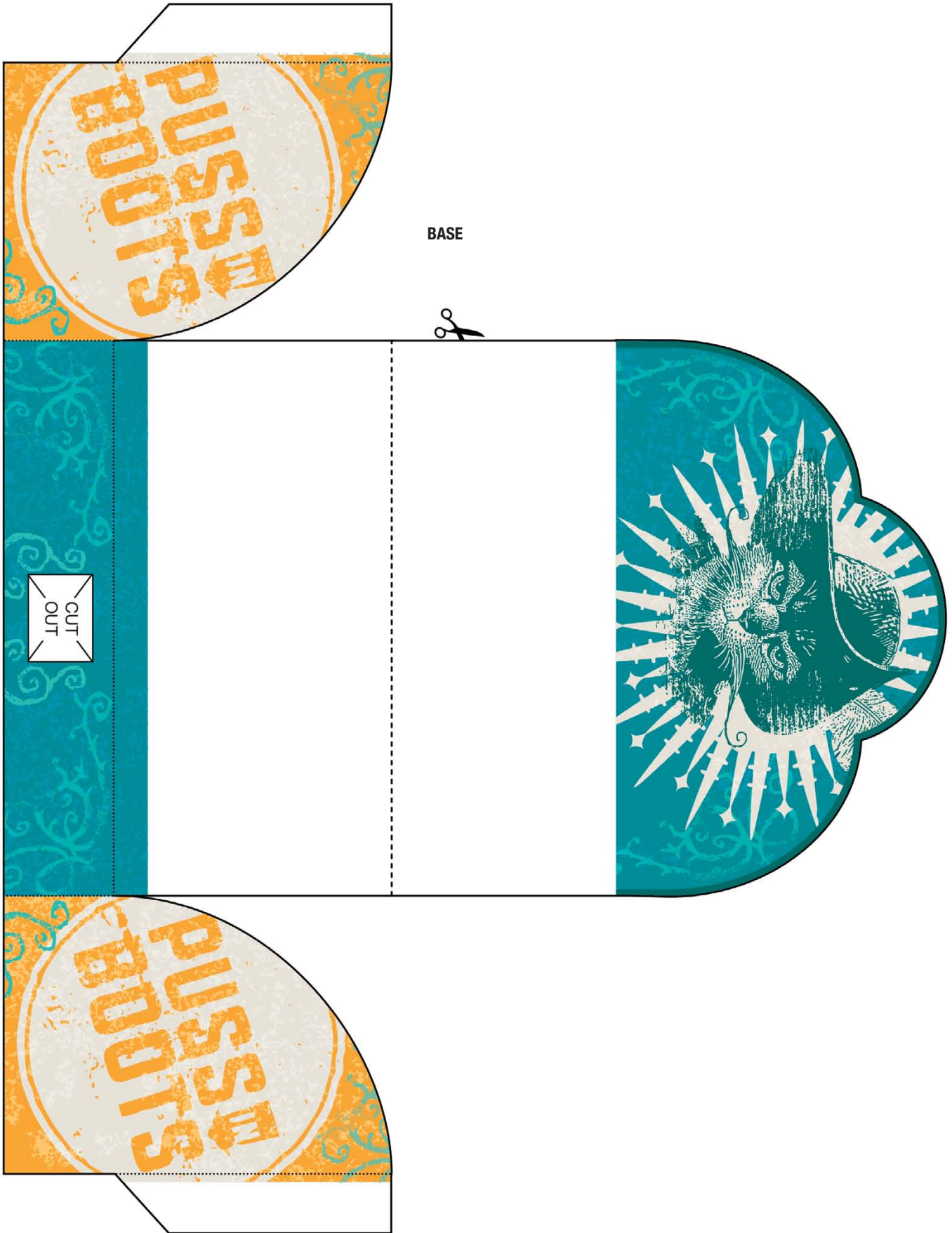


DAY BLOCK 1



DAY BLOCK 2

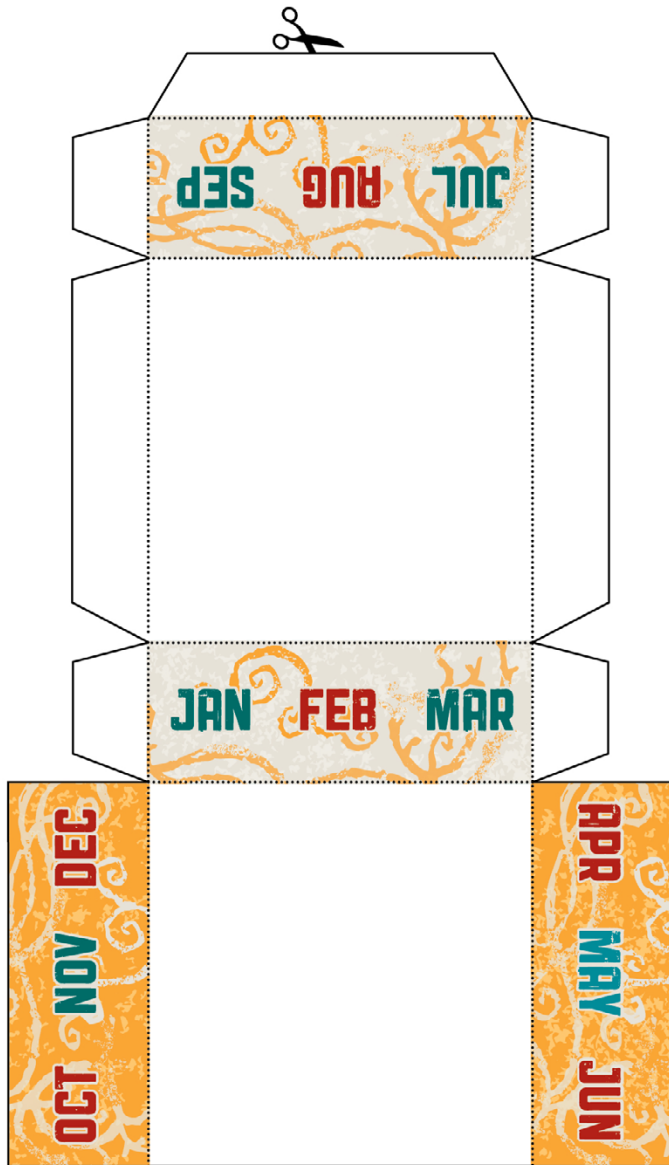




BASE

CUT
OUT

MONTH BLOCK



BRACKET

