

MASH-UP BOX

ASSEMBLY INSTRUCTIONS

Time to complete: Approximately 20 minutes Level: Easy



GETTING STARTED

Materials

- Metal-edged ruler
- Butter knife
- Scissors or craft knife
- Cutting mat (optional)
- Multipurpose glue



1 Score all the pieces: Using a ruler as a guide, run the back side of a butter knife firmly along all dotted lines.



2 Using scissors or a craft knife and cutting mat, cut out all pieces along solid lines. Don't forget to cut slits on Xs in each section of the box.



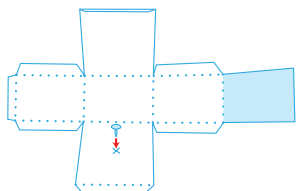
3 Fold all pieces along score lines to create a mountain fold.

Mountain Fold

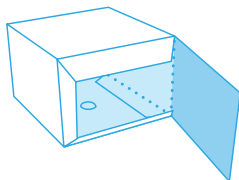


ASSEMBLE YOUR MASH-UP BOX

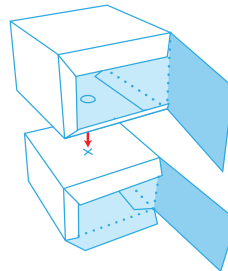
6 Insert brad through X on bottom of "head" box (non-printed side).



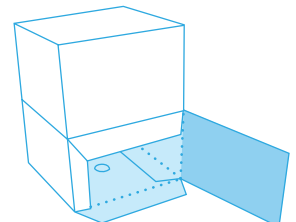
7 Glue tabs in place to form "head" box. Leave flap with no tabs open for now.



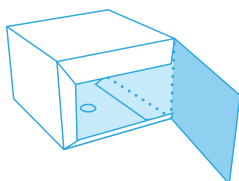
8 Repeat steps 1 and 2 for "torso" box. Place "head" box on top of "torso" box and insert ends of brad through top of "torso" box. Bend each brad end upward to secure in place.



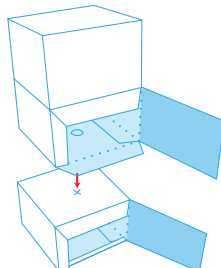
9 Glue open flap on "head" box in place.



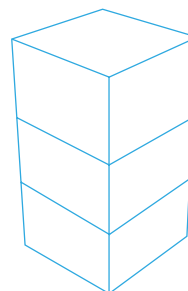
10 Glue tabs in place to form "legs" box. Leave flap with no tabs open for now.



11 Place connected "head" and "torso" boxes on top of "legs" box and insert ends of brad into top of "legs" box. Bend each end of brad upward to secure in place.



12 Glue open flap on "torso" box and "legs" box in place.



13 You're done! Twist sections around to create mash-up characters from Shrek!

