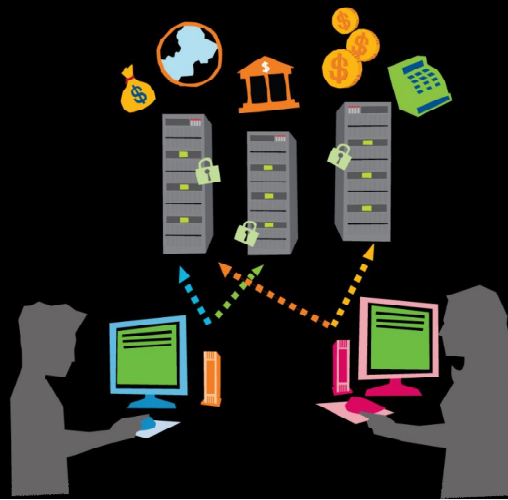


SIMPLE
SECURE
PRODUCTIVITY



HP TeemTalk Terminal Emulator

Access virtually
any host
environment from
Microsoft®
Windows®-based
desktops and
servers running
Citrix MetaFrame
Access Suite

HP TeemTalk Terminal Emulator is a terminal emulation software suite that enables connection and communication with applications on mainframes and midrange systems, including servers running proprietary operating systems, UNIX, and Linux. The software suite is embedded in the operating system of most HP thin clients and can also be installed on Microsoft® Windows® PCs for standalone use or use with Microsoft Windows Server in server-based computing environments.

Expansive compatibility

Access a variety of host environments, including UNIX-based servers, from Microsoft Windows-based desktops and servers running Citrix MetaFrame Access Suite, including Citrix MetaFrame Password Manager and Citrix MetaFrame Presentation Server, and Microsoft Terminal Services.

Emulate more than 30 different green screen terminals compatible with the terminal emulation software built into a majority of thin clients shipped worldwide.

Consistent user experience

HP TeemTalk fits well into legacy environments, so you can access the widest variety of host systems through your preferred platform, including handhelds, thin clients, and workstations—all with the same consistent look and feel so everyone gets the same user experience.

Enhanced security

Enjoy SSL (Secure Sockets Layer) and SSH (Secure Shell) encryption that ensures data confidentiality, integrity, and authentication across direct Internet connections.

Work smarter

HP TeemTalk eliminates redundant keystrokes and automates complex tasks with advanced features like programmable soft buttons, keyboard re-mapping, and programmable toolbars that simplify application interaction and boost productivity. You can quickly realize the support, scalability, management, and economic benefits of working with one vendor.

To download HP TeemTalk, please visit the HP Software Depot at www.hp.com/go/softwaredepot.

HP TeemTalk Terminal Emulator

Supported thin clients For Microsoft® Windows® XPe: HP Compaq t5730, t5630 Thin Clients; HP 6720t and HP t2533 Mobile Thin Clients
For Linux: HP gt7725, t5545, and HP Compaq t5735 Thin Clients
For Microsoft Windows CE: HP t5540 and HP Compaq t5530 Thin Clients

Supported PC and server operating systems Microsoft Windows 98, 2000, and XP and Windows Vista®
Microsoft Windows NT, 2000 and 2003 Server

Supported emulations	Windows	DEC VT52, 100, 220, 320, 420, 510, 520, SCO Console, ANSI 386, AT-386, AixTerm, PC-Term, IBM TN3270E, TN-3287 (LU Printing), IBM TN 5250E, TN3812-1 (Printing), IBM 3151 Model 11 and 3, Wyse 50, 50+60, Hazeltine 1500, ADDS A2, Televideo 910, 920, 925, 955, HP 2392A, 2622A, Tandem 6526, 6530, Data General 410, Stratus V102, Siemens 97801, Bull BQ 7107, MDIS P8, P9, P12, Unisys T27, Viewdata 40/80/Split Screen, A&T 4410, Prime PT250 Digital VT340 ReGIS, Tek 4010/4014, Westward 2119, Tektronix 4207, 4211
	Windows CE	DEC VT52, 100, 220, 320, 420, 510, 520, SCO Console, ANSI 386, AT-386, AixTerm, PC-Term, IBM TN3270E, TN-3287 (LU Printing), IBM TN 5250E, TN3812-1 (Printing), Wyse 50, 50+, 60, Televideo 910, 925, 955
	Linux	DEC VT52, 100, 220, 320, 420, 510, 520, SCO Console, ANSI 386, AT-386, AixTerm, PC-Term, IBM TN3270E, TN-3287 (LU Printing), IBM TN 5250E, TN3812-1 (Printing), IBM 3151 Model 11 and 31, Wyse 50, 50+, 60, Hazeltine 1500, ADDS A2, Televideo 910, 925, HP 2392A, 2622A, Tandem 6526, 6530, Data General 410, D200, Stratus V102, Siemens 97801, Bull BQ 7107, ICL Doc-18, MDIS P8, P9, P12, A&T 4410, Viewdata 40/80/Split Screen
	Devices	The agent software component is installed on client devices so that HP Device Manager can interact with them. These agents are embedded into each HP thin client operating system to enable Device Manager to manage them out-of-the-box, receiving task commands, executing them, and reporting on their status.
	FTP Server	Repository of components, images, etc. that can be uploaded from or downloaded to the agents at the request of the server.

Licensing HP TeemTalk is embedded at no extra charge within most HP thin client operating systems. It can also be purchased per seat for PCs or servers.

Software maintenance When purchased per seat for PCs and servers, HP TeemTalk has a renewal annual maintenance (Software Assurance) charge that allows for continued updates and support which starts on the anniversary day of software purchase.

Software expiration and support Once installed and fully licensed, the Software does not expire and can be used indefinitely. If an error in the currently available version of the Software is discovered HP will make every reasonable effort to repair or remedy the error. If such error is discovered in non-currently available version of the Software, HP may elect to make repairs or remedies only for the currently available version of the Software. In order to gain access to these repairs, customers may be required to purchase upgrades if their Software Assurance Period has expired.

Service and support Each purchase includes one year of free software updates and technical support for HP TeemTalk Terminal Emulator.

