



HP LASERJET M3035 SERIES vs. LEXMARK X466DE

HP LaserJet M3035
35 ppm b/w



Lexmark X466de
40 ppm b/w



Significant advantages of HP compared to Lexmark

Award-winning design — The LaserJet M3035 received a BLI “Pick” award for its user-friendly design, impressive performance and functionality.

Simple routine maintenance — The M3035 has only one consumable (an easy-to-install all-in-one print cartridge) that users replace at regular intervals. HP’s simple design lets even novice users feel comfortable changing toner.

Seamless integration — HP’s Universal Print Driver simplifies driver deployment by providing a single driver to be used for multiple HP products on a network.

Industry-leading software utilities — HP Web Jetadmin provides IT administrators with all the tools they need to monitor and manage their network.

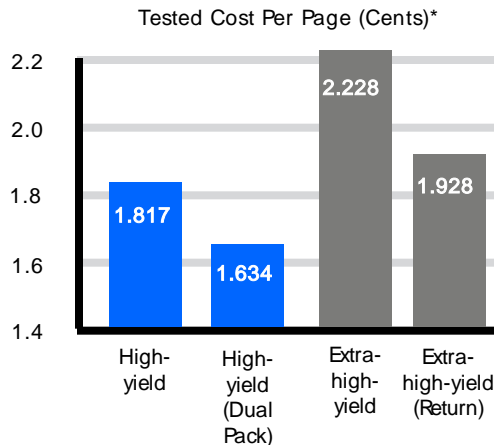


HP LaserJet M3035 won a BLI “Pick” award for “Outstanding Small Workgroup Monochrome Multifunction Printer.” BLI Senior Printer Analyst noted, “With HP’s Easy Select Control Panel, the LaserJet M3035xs offers outstanding ease of use. And with Web Jetadmin, automated installation software and HP’s Universal Print Driver the LaserJet M3035 is a welcome addition to any network.”

Tony Maceri, senior lab technician for BLI, said, “The LaserJet M3035xs is a great choice for small workgroups - in one space-saving device, users get the full functionality of printing, copying and faxing, as well as network scan-to-file and scan-to-e-mail, which are two features not offered on many devices in this speed range.”

Lower Toner Costs = Higher Value

The HP LaserJet M3035 costs less to print than the X466de, because of its lower cost per page. BLI’s independent testing of the highest capacity cartridges from each vendor showed that HP gives you a lower cost per page.



* BLI calculations based on the manufacturers’ Web pricing (as of May 2010) and BLI’s tested yields for an average of two high-yield cartridges using the ISO/IEC 19752 toner yield test original (and the rated drum yield in the case of the Lexmark X466de). Data from BLI Lab Test Reports. HP toner yield data from BLI’s Lab Test Report on the HP LaserJet M3027, which uses the same high-yield cartridge (Q7551X) as the M3035. HP’s high-yield cartridge yielded an average of 13,154 pages. Lexmark’s extra-high-yield cartridge yielded an average of 13,707 pages.

HP Lexmark



HP LASERJET M3035 SERIES vs. LEXMARK X466DE

Simple, Intuitive Design

HP's Easy Select Control Panel means superb ease of use — HP's intuitive control panel has a user-friendly touch screen with selections for copy, scan, fax and workflow on the main screen to let users immediately find the function they need. Menus are well laid out and functions are clearly labeled not only with text, but easy-to-recognize icons as well.

One simple cartridge to change means less downtime — The LaserJet M3035 uses a simple-to-change print cartridge that slides easily into place behind the front cover, taking only seconds to replace. Step-by-step instructions on the display and a label on the inside of the door make changing toner simple for even the novice user.

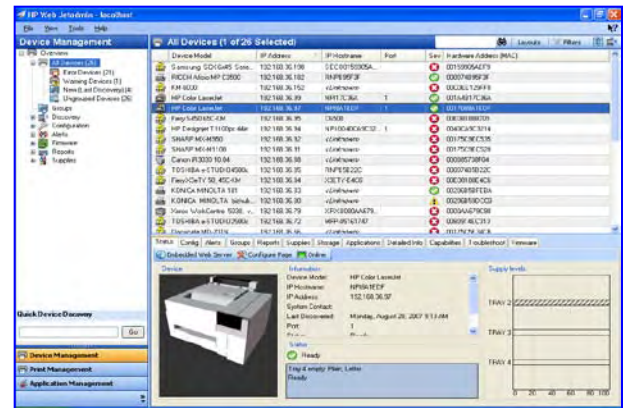


The LaserJet M3035's intuitive control panel has a clean layout and functions are labeled with easy-to-recognize names and icons, which allow even novice users to navigate the menus with ease.

Simple integration, for one MFP or a whole fleet.

HP offers the Universal Print Driver, which lets users find and print to HP printers and MFPs no matter what model they are. This means you only need one print driver, so administrators don't have to keep track of numerous drivers for different machines.

Plus, with HP Web Jetadmin, administrators can configure and/or diagnose printers, configure multiple devices simultaneously, set up alert notifications, check device status and monitor supply levels. According to BLI, "Web Jetadmin is one of the most powerful network device management utilities for workgroup printers and MFPs tested to date, providing network administrators with a comprehensive set of tools for managing output devices on the network."



Web Jetadmin's device list indicates status via an icon, while the preview pane provides detailed device and supplies status for a selected printer or MFP, allowing administrators to quickly assess and address critical issues.

Radically simplify MFP (and printer) management with HP Web Jetadmin.

HP Web Jetadmin outperforms Lexmark's MarkVision Professional in the key areas that radically simplify managing the MFPs (and printers) on your network.*

* Based on BLI's Solutions Test Reports on HP Web Jetadmin 10 and Lexmark MarkVision Professional 11.1.

Does your software...	Web Jetadmin	MarkVision Professional
Support networked scanners and projectors?	Yes	No
Feature a customizable user interface with drag-and-drop controls?	Yes	No
Include built-in report templates?	Yes	No
Allow network administrators to...	Web Jetadmin	MarkVision Professional
Restrict color printing, copying and scanning?	Yes	No
Discover and manage locally connected printers?	Yes	No
Configure fleets of unlike devices at the same time?	Yes	No
Batch configure security features?	Yes	No