

Device Storage Manager

Plug-in for HP Web Jetadmin



Table of Contents:

Overview	1
Installation.....	2
Supported Printers.....	2
Accessing Device Storage Manager.....	2
Single Printer Management	2
Uploading Files into Web Jetadmin	4
Multiple Printer File Management.....	4
Disk Jobs.....	6
Resident Fonts.....	7
Summary	8

Overview

HP Device Storage Manager is a plug-in application to HP Web Jetadmin that provides the ability to manage files such as fonts, macros, and disk jobs on printers with storage. Files that reside on a printer can be listed, added, deleted, or printed through Device Storage Manager. For printers with a disk, Device Storage manager can initialize or write-protect the disk. Device Storage Manager is recommended as a direct replacement for the discontinued HP Resource Manager.

Installation

HP Web Jetadmin offers a *Product Update* feature that can be used to automatically download and install the Device Storage Manager plug-in directly from the web. HP Web Jetadmin must have access to the Internet in order to perform the automated function. If a secure proxy is in place, HP Web Jetadmin can be instructed to attempt to use proper credentials to penetrate the secure proxy. If HP Web Jetadmin does not have access to the Internet, the Device Storage Manager plug-in can be manually downloaded and installed through *Product Update* by browsing to the subdirectory where the plug-in has been downloaded. The plug-in can be found on the web at the following location:

www.hp.com/go/wja_components

To install the Device Storage Manager into HP Web Jetadmin, select *Product Update*, then click the *Install* folder (see Figure 1). The first box will display a list of available plug-ins on the web if HP Web Jetadmin has been configured to access the internet for downloads. Otherwise, the box below can be used to browse for plug-ins that have been previously downloaded to the hard drive and upload to appear in the box above. Once the Device Storage Manager plug-in appears in the box above, highlight it and click *Next* to begin the installation.

Supported Printers

The HP Device Storage Manager supports HP printers with Hewlett-Packard Flash, Hard Disk or RAM Disk. Examples of the earliest HP printer models that may contain this functionality include:

- HP Color LaserJet 4550
- HP Color LaserJet 4600
- HP Color LaserJet 8550
- HP LaserJet 5Si
- HP LaserJet 5/5M
- HP LaserJet 4000
- HP LaserJet 4050
- HP LaserJet 4100
- HP LaserJet 4200
- HP LaserJet 4300
- HP LaserJet 5000
- HP LaserJet 8000
- HP LaserJet 8100
- HP LaserJet 8150
- HP LaserJet 9000

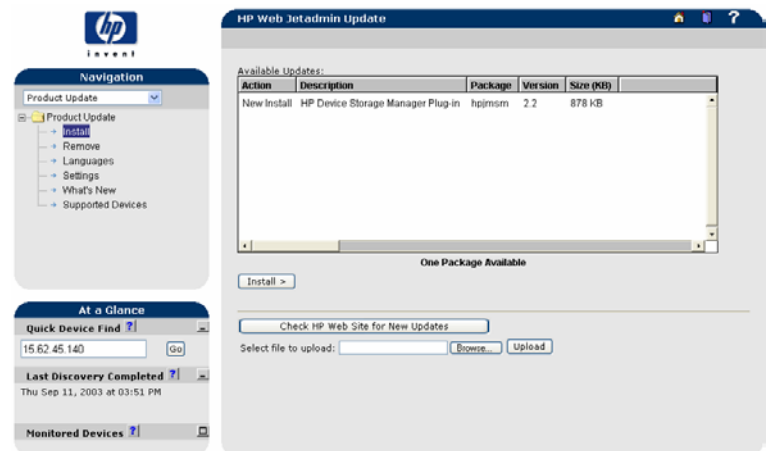


Figure 1 - Installation of Device Storage Manager

Accessing Device Storage Manager

Device Storage Manager can be accessed via several avenues in HP Web Jetadmin, depending upon whether the intent is to manage files on just an individual printer or on multiple printers simultaneously. Also, the functionality of Device Storage Manager will differ when managing files on an individual printer vs. multiple printers.

Single Printer Management

To manage files on just an individual printer, select *Device Storage Manager* from the drop-down menu while viewing the *Status* page of an individual device in HP Web Jetadmin (see Figure 2).

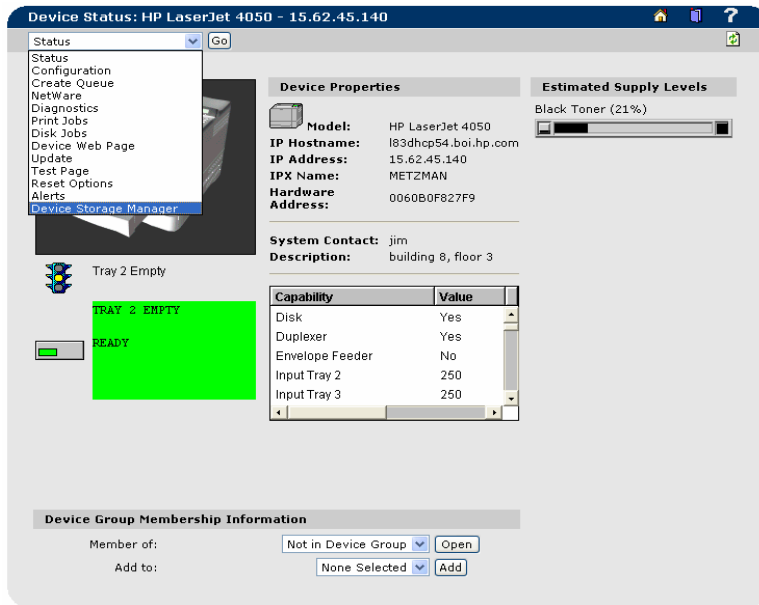


Figure 2 – Individual Printer Access

The box on the upper half of the Device Storage Manager page for a single device displays all files that reside on the printer (see Figure 3). This includes fonts, forms, macros, and print jobs stored on the disk. The columns in will display details about the various files stored on the disk such as name, type, ID, size, etc.

The box on the lower half of the screen displays all files that have been uploaded to HP Web Jetadmin in order to be copied to the storage devices in printers. New files can be uploaded to HP

Web Jetadmin from this section, and files can be downloaded to the printer.

The area on the top right of the screen displays information pertaining to the printer storage disk. It provides the ability to initialize or write-protect the disk. A disk must be initialized before files can be managed on the disk. The *Initialize* tab in the box on the right will initialize the disk on the printer. The *Write Protect* checkbox will configure the disk to be read only and will not allow for any files to be copied to or deleted from the disk. Additional information pertaining to the printer disk includes location (slot), amount of free space, and amount of total space.

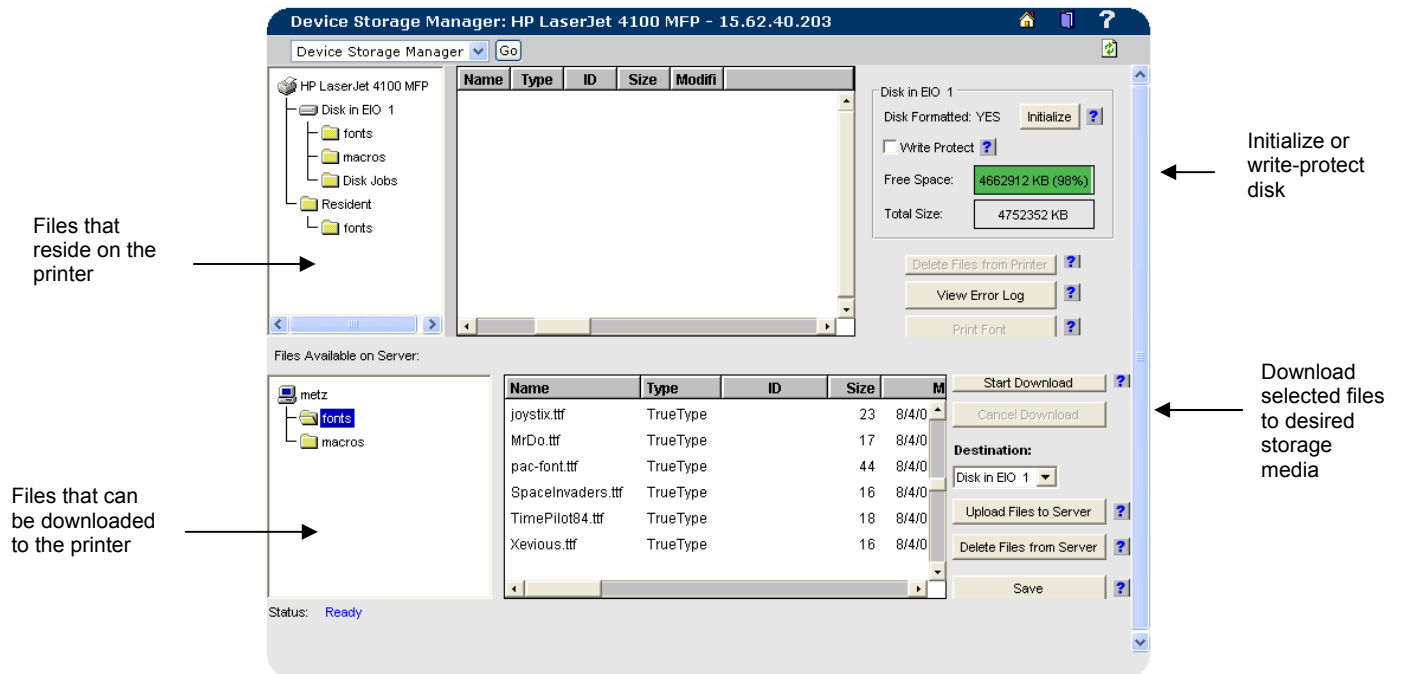


Figure 3 - Individual Printer View

Uploading Files into Web Jetadmin

The box on the bottom of the screen allows for uploading fonts and macros to Web Jetadmin and selecting those files for downloading to the printer. Fonts can be uploaded to HP Web Jetadmin from any source by selecting the *Upload Files to Server* tab.

Files can be deleted from the printer disk by selecting the *Delete Files from Printer* tab. The *View Error Log* tab will display a screen that indicates all recent errors that have occurred while managing files on the disk.

Once the files are uploaded, any or all files can be selected and downloaded to the printer by selecting the *Start Download* tab.

An ID can be assigned to each file prior to downloading. Once all desired ID's are entered, select the Save button to preserve these ID's when used in other areas of Device Storage Manager. For example, any saved ID's will also appear next to the corresponding file when selecting from the list to add to a group of printers.

When downloading files to an individual printer, the destination storage can be selected from the following choices:

- Largest free space – the default selection, used if no other media is selected or if a desired media does not exist.
- Flash - memory added to a printer that will save data through a power cycle
- RAM Disk - allocates part of the printer's resident memory for storage use. This allocated memory can then be used like flash memory or disk, but its contents are not preserved through power cycles.

Multiple Printer File Management

To manage files on multiple printers simultaneously, select Device Storage Manager from the Device Tools drop-down menu while viewing a group of printers in HP Web Jetadmin or while selecting multiple printers from the All Devices list. (see Figure 4). The screen is divided into two sections (see Figure 5).

The *Project Settings* box above represents the *project*. All files in the project will be copied to all printers listed under the printers folder when *Start Download* is selected.

The *Files Available on Server* box below represents all files that have been copied to HP Web Jetadmin and can be added to the project above if desired.

Select *Upload Files to Server* to upload fonts and macros to the HP Web Jetadmin machine. Select *Add Files to Project* to add all selected files to the project box above.

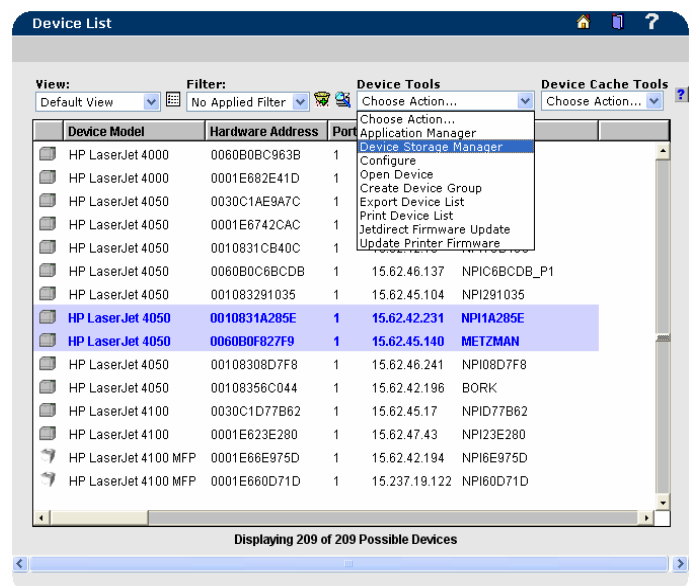


Figure 4 – Multiple Printer Access

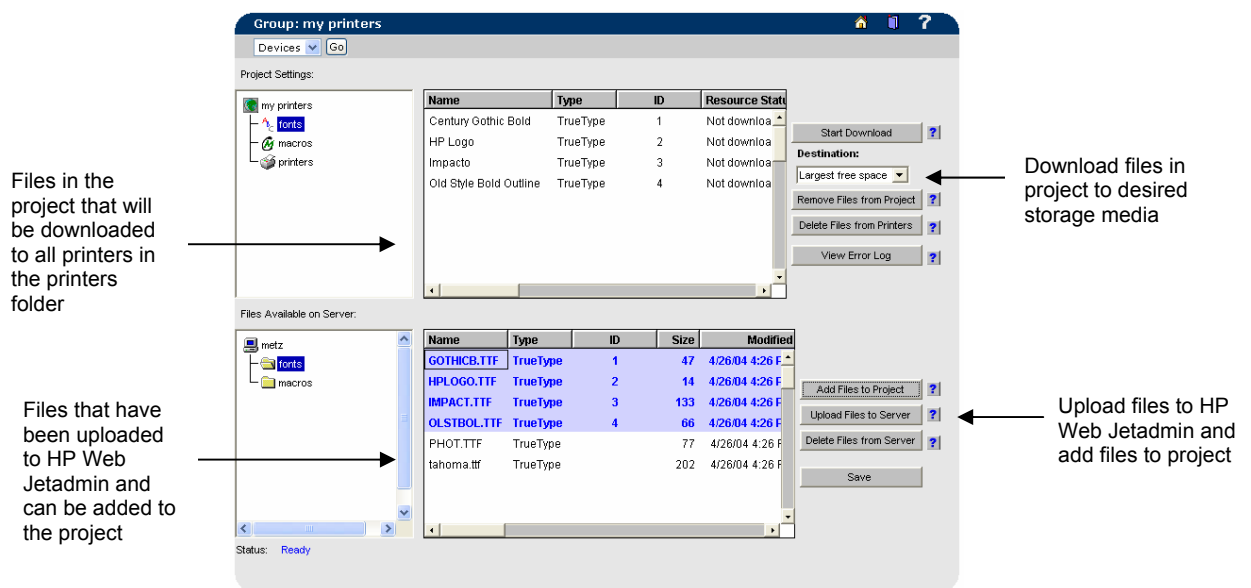


Figure 5 Multiple Printer View

An ID can be assigned to any file either before or after adding the file to the project. In order to assign ID's to files prior to adding it to the project, save the ID's by clicking the Save button after all desired ID's are entered. Now, when the files are added to the project, the ID's will be preserved. Additionally, the ID's could still be changed in the upper box (project) if so desired.

Select *Delete Files from Server* to remove font and macro files from the HP Web Jetadmin machine.

Note: If a font or macro file is deleted from the server and other projects contain links to that file, a message will be written to the error log when a download is attempted on that file

The *Project Settings* box above can for download files in the project to all printers in the printers folder, remove files in the project from all printers in the printers folder, and remove files from the project.

The *Start Download* tab begins the process of downloading all files in the project to all printers in the printers folder. The *Status* bar below indicates the progress. The *Resource Status* column will indicate successes and failures. Once again, the destination storage media type can be selected, just as it can when viewing an individual printer in Device Storage Manager.

In addition to downloading to the printer, the project view provides the ability to save files to a PJI file on the hard drive that can later be copied to a printer via a DOS *copy* command. Essentially, this capability allows for downloading files to parallel connected printers. Once the files are copied to a direct-connected printer, the files are appended to any existing files on the printer.

The *Delete Files from Printers* tab will remove all files in the project from all printers in the printers folder if the files exist on the printers.

The *Remove Files from Project* tab is used to remove files from the project. Removing files from the project does not delete the files from the HP Web Jetadmin machine, nor does it remove files from printers in the group. It merely removes files from the project.

The *View Error Log* tab displays the results of the most recent download process. This log clears itself after each download.

File Formats

Typical file formats that a printer will accept include:

- TrueType fonts
- Type 1 PostScript fonts
- TrueType collections
- PCL bitmap Fonts
- Windows bitmaps
- Black and white images
- PCL Macros

The following file formats are not supported:

- Intellifonts
- Compressed PCL Bitmap Fonts

Forms can be designed within a standard editor e.g. Microsoft Word or Lotus AmiPro. After designing a form, selecting Print to File from the printer driver will convert the print job so that it can be downloaded to the printer as a macro.

Disk Jobs

HP Device Storage Manager also provides the ability to manage print jobs that have been stored on the printer through the printer driver while printing (disk jobs). These stored print jobs can be managed by selecting the *Disk Jobs* folder under Device Storage Manager (see Figure 6).

Stored jobs are added to the printer by selecting *Job Retention* when printing a job (see Figure 7). Job Retention mode stores a print job on the printer to make it available to print by pressing keys on the printer front control panel. Some types of stored jobs will require that a personal identification number (PIN) be entered before printing.

Job retention options for storing jobs on the printer include:

- **Proof and Hold.** Prints only the first copy of a print job and holds additional copies until they are requested from the control panel.
- **Private Job.** Stores a print job on the printer to make available to users who have the printer job's personal identification number (PIN). The print job is deleted from memory after prints.
- **Quick Copy.** Allows for making additional copies of

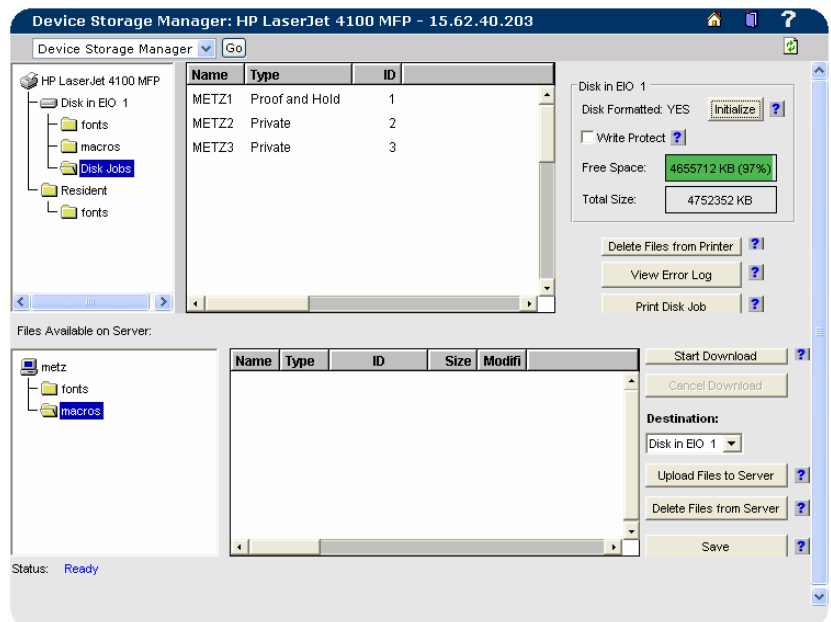


Figure 6 - Disk Jobs

print jobs from the printer control panel without resending the jobs from the computer.

- **Stored Job.** Stores a print job on the printer to make it available to others to print. The print job is stored on the printer's hard drive (or RAM if available) until it is deleted using the printer's control panel.
- **Stored Job with PIN.** Stores a print job on the printer to make available to users who have the printer job's personal identification number (PIN). The print job is stored on the printer's hard drive until it is deleted using the printer's control panel.

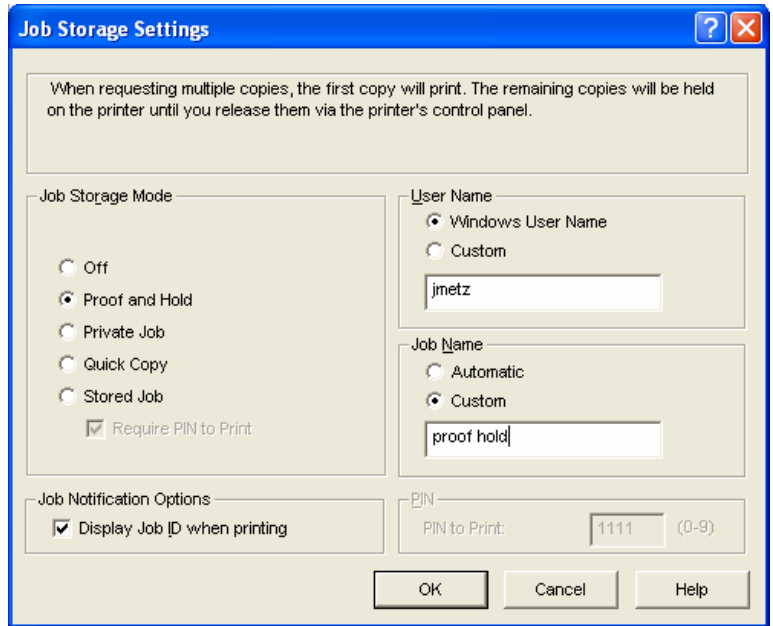


Figure 7 – Printing with Job Retention

Typically, the stored print job is requested to print from the printer front control panel. However, HP Device Storage Manager allows for remotely triggering the job to print by selecting the *Print Disk Job* tab. If a PIN has been stored for the job, Device Storage Manager will request that the PIN be entered before allowing it to print.

HP Device Storage Manager also allows for deleting stored jobs by selecting the *Delete Files from Printer* tab. HP Device Storage Manager will prompt for a PIN if one has been assigned to any job that has been requested to be deleted.

Resident Fonts

In addition to fonts stored on media such as disk, RAM disk, or compact flash, resident fonts that are included on the printer by default can also be viewed in Device Storage Manager. To view the printer resident fonts, select the Resident Fonts folder in the upper box while viewing Device Storage Manager for a single printer (see Figure 8). Fonts that have been added to the printer by DIMM or SIM can also be viewed in this same area of Device Storage by selecting the respective folder.

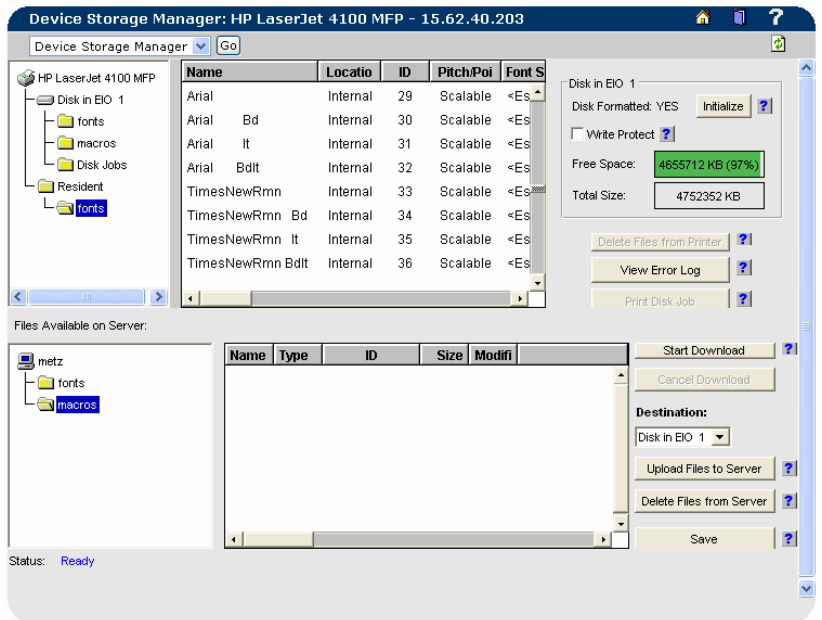


Figure 8 – Printer Resident Fonts

Summary

The HP Device Storage Manager plug-in to HP Web Jetadmin provides the ability to manage fonts, forms, macros, and disk jobs on HP printers. The Device Storage Manager is a direct replacement for the HP Resource Manager. Incorporating the ability to manage stored fonts and macros into HP Web Jetadmin is yet another step in combining many printer administrative needs into a single management tool.